

# Flygt SR 4230.010



---

# Table of Contents

<b>1 Introduction.....</b>	<b>2</b>
1.1 Specially approved products.....	2
<b>2 Product Description.....</b>	<b>3</b>
2.1 The data plate.....	3
2.2 Product denomination.....	3
<b>3 Exploded View.....</b>	<b>5</b>
3.1 Drive unit.....	5
3.2 Hydraulic unit.....	6
3.3 Installation components.....	7
<b>4 List of Parts.....</b>	<b>8</b>
4.1 4230.010.....	8

# 1 Introduction

## Purpose of this manual

The purpose of this manual is to provide necessary information on spare parts and accessories order.

## Disclaimer

Always use genuine Flygt parts. The use of other spare parts or accessories can invalidate any claims for warranty or compensation. Xylem does not take any responsibility for damages that are caused by the use of non-original parts. For more information, contact your local sales and service representative.

## Data for ordering spare parts

The following information is needed for spare part orders:

- Serial number of the product
- Part number
- Quantity of bulk material, see \* in tables

## 1.1 Specially approved products

### Qualification of personnel

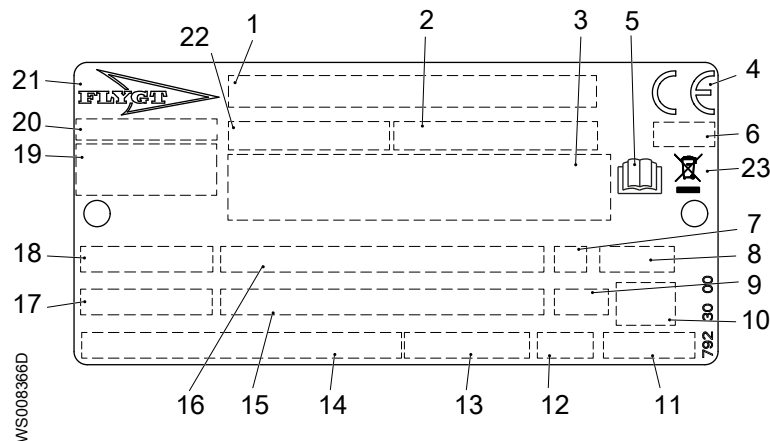
Only Xylem or Xylem-authorized service personnel may undertake repair work on specially approved products.

### Dimensional accuracy inspection

Spare parts marked with (Ex) after the part number are subject to dimensional accuracy inspection when used in specially approved products.

# 2 Product Description

## 2.1 The data plate



1. Serial number, see [Product denomination](#) on page 3
2. Product number
3. Additional information
4. CE-marking
5. Read installation manual
6. Notified body (only for EN-approved Ex products)
7. Duty class
8. Degree of protection
9. Thermal class
10. Maximum submergence
11. Product weight
12. Direction of rotation: L=left, R=right
13. Nominal motor speed
14. Minimum rated voltage/rated current - maximum rated voltage/rated current
15. Maximum ambient temperature (2), rated shaft power (2)
16. Maximum ambient temperature (1), rated shaft power (1)
17. Power factor
18. Phase, type of current, frequency
19. Manufacturer
20. Country of origin
21. Brand
22. Sales denomination
23. WEEE-Directive symbol

## 2.2 Product denomination

### Reading instruction

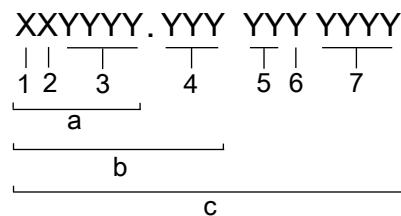
In this section, code characters are illustrated accordingly:

X = letter

Y = digit

The different types of codes are marked up with a, b and c. Code parameters are marked up with numbers.

### Codes and parameters

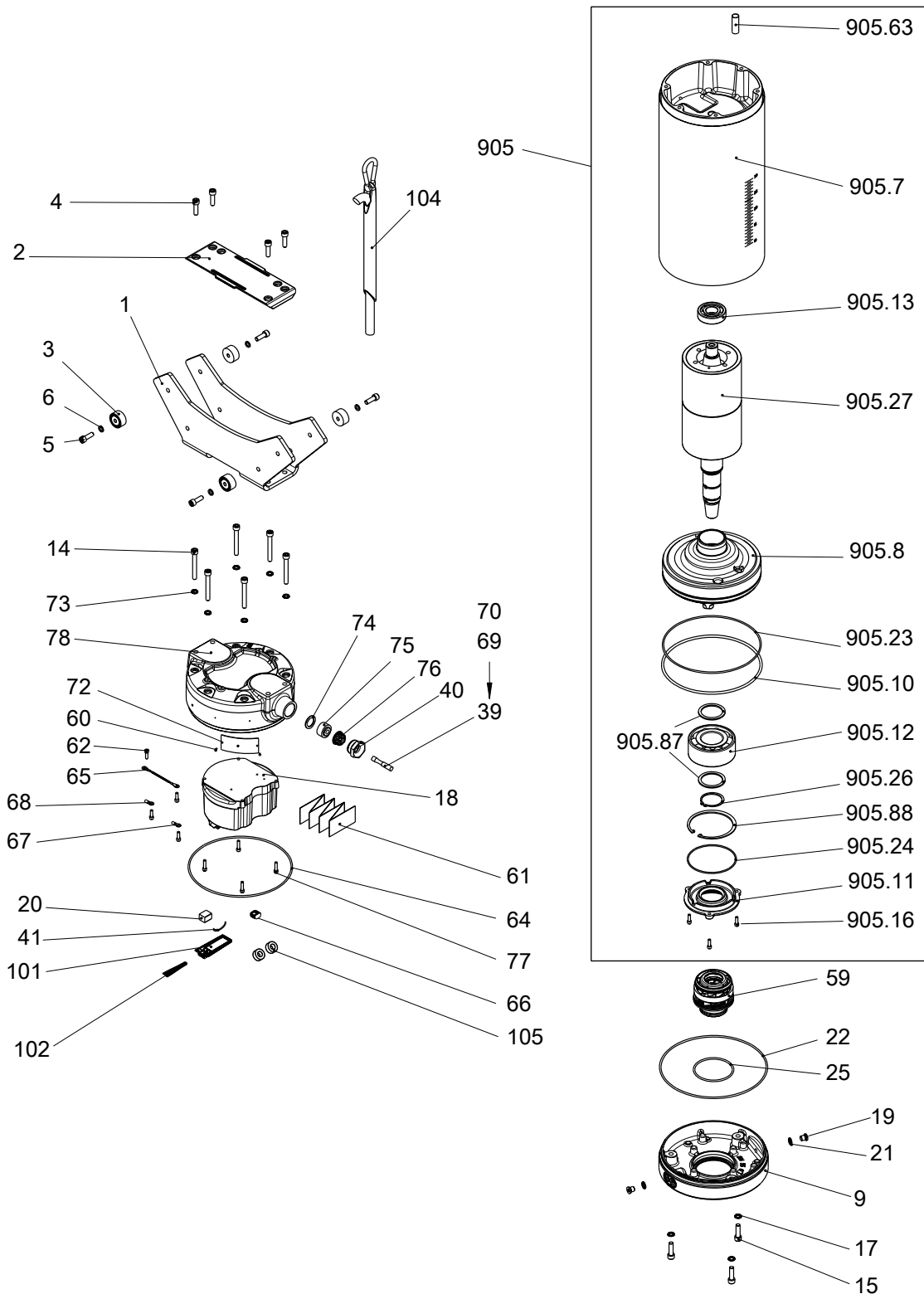


WS006265B

Type of Callout	Number	Indication
Type of code	a	Sales denomination
	b	Product code
	c	Serial number
Parameter	1	Hydraulic end
	2	Type of installation
	3	Sales code
	4	Version
	5	Production year
	6	Production cycle
	7	Running number

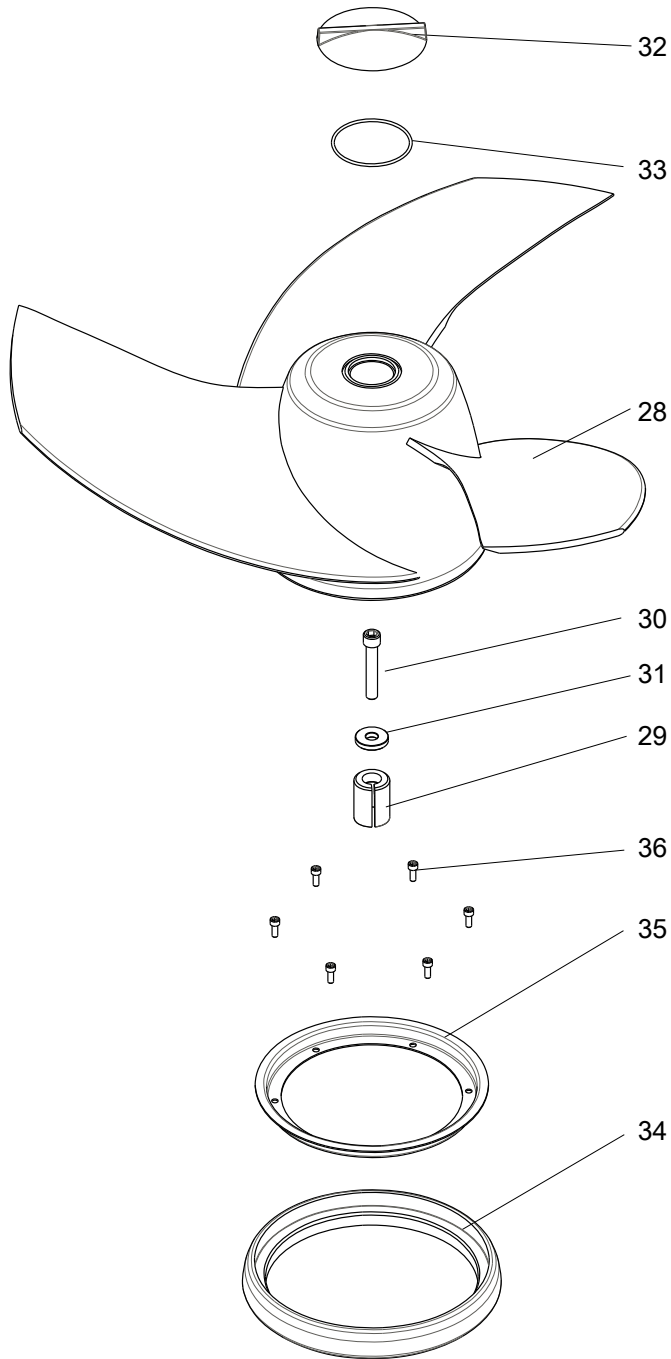
# 3 Exploded View

## 3.1 Drive unit



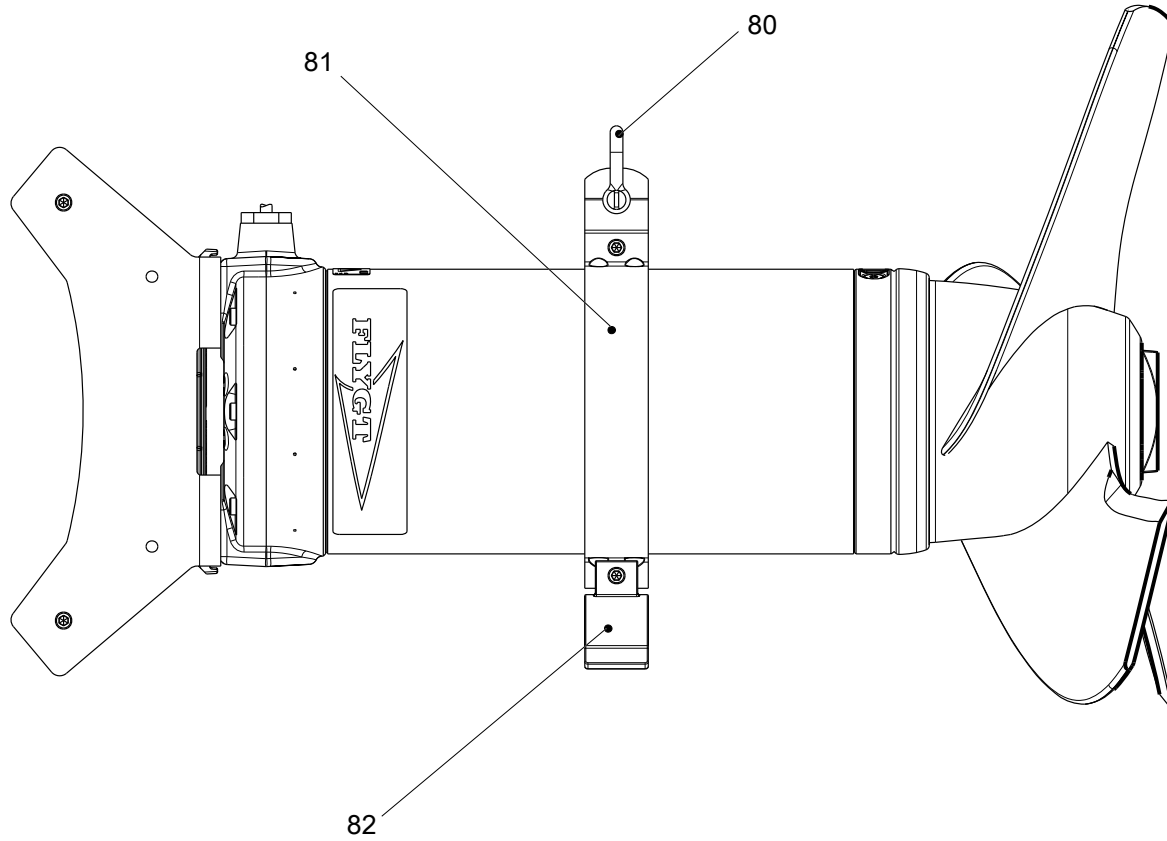
40967A

### 3.2 Hydraulic unit



40971A

### 3.3 Installation components



40973A

Figure 1: Lifting device

# 4 List of Parts

## 4.1 4230.010

Pos. No	Part. No	Type	Denomination	Qty/Version	
				010	
1	814 57 00		Sliding bracket	Guide bar: 100 x 100 mm	1
1	814 58 00		Sliding bracket	Guide bar: 100 x 150 mm	1
2	814 51 00		Plate		1
3	630 83 00		Sleeve SS		4
4	83 04 56		Hex.socket hd screw M10X35-A4-80		4
5	83 04 56		Hex.socket hd screw M10X35-A4-80		4
6	82 50 16		Lock washer		4
9	814 55 00		Seal housing cover u		1
14	83 02 78		Hex.socket hd screw ISO 4762 M 10 X80-A4-70		6
15	83 04 56		Hex.socket hd screw M10X35-A4-80		3
17	583 32 02		Seal ring FPM		3
18	835 62 02		Base plate unit	Maximum power: 2,20 kW / 1,50 HP Maximum current: 3,50 A	1
18	835 62 04		Base plate unit	Maximum power: 3 kW / 1,50 HP Maximum current: 4,90 A	1
18	835 62 16		Base plate unit	Maximum power: 4 kW / 1,50 HP Maximum current: 5,20 A	1
18	835 62 18		Base plate unit	Maximum power: 5,50 kW / 1,50 HP Maximum current: 8,80 A	1
18	835 62 20		Base plate unit	Maximum power: 7,30 kW / 1,50 HP Maximum current: 13,30 A	1
19	85 05 78		Plug		2
20	518 89 03	(Ex)	Leakage sensor		1
21	85 05 49		Seal washer		2
22	82 81 96		O-ring 246.0X4.0 FPM		1
25	82 95 70		O-ring 92X4 FPM		1
28	811 51 00		Propeller compl.		1
29	651 03 01		Sleeve		1
30	338 13 10		Plain washer 13X35X6		1
31	83 04 69		Hex.socket hd screw		1
32	570 39 00		Plug VINYLESTER DMC+GF		1
33	82 81 76		O-ring 79.5X3 FPM		1
34	811 56 00		Protective ring		1
35	811 57 00		Holder		1
36	83 02 75		Hex.socket hd screw M6X16-A4-70		6
39	94 19 90		Motor cable subcab S3X2.5+3X2.5/3+S(4X0.5)		*
40	462 45 00	(Ex)	Gland screw Pr 37		1
40	791 15 00		Gland screw ISO G1 1/4"		1
41	573 58 70		Single-core cable		1

Pos. No	Part. No	Type	Denomination	Qty/Version	
				010	
59	619 64 30		Mechanical seal dbl. WCCR/WCCR, WCCR/WCCR FPM	Material inner seal: Cemented carbide (WCCR) - Cemented carbide (WCCR) Material outer seal: Cemented carbide (WCCR) - Cemented carbide (WCCR)	1
59	619 64 31		Mechanical seal dbl. WCCR/WCCR, RSIC/RSIC FPM	Material inner seal: Cemented carbide (WCCR) - Cemented carbide (WCCR) Material outer seal: Silicone carbide (RSiC) - Silicone carbide (RSiC)	1
60	82 20 88		Drive screw 4X5-A2/A4		2
61	791 48 06		Connection plate		1
62	83 02 75		Hex.socket hd screw M6X16-A4-70		4
64	82 81 96		O-ring 246.0X4.0 FPM		1
65	573 58 27		Single-core cable		1
66	83 42 67		Terminal block 600V/20A UL		1
67	83 43 62		Cable lug UL/CSA 0.50-1.65 MM2 M6		1
68	83 43 58		Cable lug UL/CSA 1.04-2.62 MM2 M6		1
69	93 00 77		Shrink hose ID=6.4 MM		*
70	94 03 33		Shrink hose ID=3.2 MM		*
72	792 30 00		Data plate		1
73	583 32 02		Seal ring FPM		6
74	82 40 61		Plain washer 24.5X35X2-A2-70		1
75	84 17 94		Seal sleeve (18)-20 MM NBR		1
76	678 58 20	(Ex)	Cable clip 18-(20) MM		1
77	83 02 79		Hex.socket hd screw M6X25-A4-70		4
78	814 56 00		Connection housing		1
79	592 04 00		Caution plate		1
80	82 26 49		Shackle		1
81	596 74 01		Lifting handle unit SS		1
82	833 24 02		Support		1
101	820 83 00		I/o unit		1
102	824 95 00		Cable unit		1
104	482 01 01		Cable supp.grip unit		1
105	83 95 06		Electrical filter		2
400	667 40 01		Sticker		2
401	726 37 00		Caution label		2
402	820 22 00		Sticker		2
800	85 07 72		O-ring kit		1
900	836 54 00		Basic repair kit		1
900	836 54 01		Basic repair kit		1
905	825 96 00		Motor unit	Maximum power: 3 kW / 1,50 HP Maximum current: 4,90 A Maximum power: 2,20 kW / 1,50 HP Maximum current: 3,50 A	1

Pos. No	Part. No	Type	Denomination	Qty/Version
				010
905,7	818 82 00		Stator housing unit	1
905,8	818 79 00		Bearing housing	1
905,10	607 48 08		Spring	1
905,11	818 80 00		Bearing cover	1
905,12	83 30 21		Ball bearing 3311A-2Z/C3VT113	1
905,13	83 33 15		Ball bearing 6306-2Z C3-CLEARANCE	1
905,16	82 00 15		Hex.socket hd screw M6X20-A2-70	3
905,23	82 78 51		O-ring 228.19X3.53 NBR	1
905,24	82 81 59		O-ring 119.5X3 FPM	1
905,26	82 59 12		Retaining ring SGA 55	1
905,27	814 59 13		Shaft unit	1
905,63	94 13 59		Insulating hose	*
905,87	82 44 19		Supporting washer 55X68X3	2
905,88	83 07 63		Retaining ring 120/2,85	1
905	825 96 04		Motor unit Maximum power: 5,50 kW / 1,50 HP Maximum current: 8,80 A Maximum power: 7,30 kW / 1,50 HP Maximum current: 13,30 A Maximum power: 4 kW / 1,50 HP Maximum current: 5,20 A	1
905,7	818 82 02		Stator housing unit	1
905,8	818 79 00		Bearing housing	1
905,10	607 48 08		Spring	1
905,11	818 80 00		Bearing cover	1
905,12	83 30 21		Ball bearing 3311A-2Z/C3VT113	1
905,13	83 33 15		Ball bearing 6306-2Z C3-CLEARANCE	1
905,16	82 00 15		Hex.socket hd screw M6X20-A2-70	3
905,23	82 78 51		O-ring 228.19X3.53 NBR	1
905,24	82 81 59		O-ring 119.5X3 FPM	1
905,26	82 59 12		Retaining ring SGA 55	1
905,27	814 59 26		Shaft unit	1
905,63	94 13 59		Insulating hose	*
905,87	82 44 19		Supporting washer 55X68X3	2
905,88	83 07 63		Retaining ring 120/2,85	1







# Xylem |'zīləm|

- 1) The tissue in plants that brings water upward from the roots;
- 2) a leading global water technology company.

We're a global team unified in a common purpose: creating advanced technology solutions to the world's water challenges. Developing new technologies that will improve the way water is used, conserved, and re-used in the future is central to our work. Our products and services move, treat, analyze, monitor and return water to the environment, in public utility, industrial, residential and commercial building services settings. Xylem also provides a leading portfolio of smart metering, network technologies and advanced analytics solutions for water, electric and gas utilities. In more than 150 countries, we have strong, long-standing relationships with customers who know us for our powerful combination of leading product brands and applications expertise with a strong focus on developing comprehensive, sustainable solutions.

For more information on how Xylem can help you, go to [www.xylem.com](http://www.xylem.com)



Xylem Water Solutions Global  
Services AB  
361 80 Emmaboda  
Sweden  
Tel: +46-471-24 70 00  
Fax: +46-471-24 74 01  
<http://tpi.xylem.com>  
[www.xylemwatersolutions.com/  
contacts/](http://www.xylemwatersolutions.com/contacts/)

Visit our Web site for the latest version of this document  
and more information

The original instruction is in English. All non-English  
instructions are translations of the original instruction.

© 2019 Xylem Inc