



Parts List

90000201_4.0



Flygt 4320.011/.091

Table of Contents

1	Introduction.....	2
1.1	Specially approved products.....	2
2	Product Description.....	3
2.1	The data plate.....	3
2.2	Approvals.....	3
2.3	Product denomination.....	4
3	Exploded View.....	6
3.1	Drive unit.....	6
3.2	Hydraulic unit.....	7
4	List of Parts.....	8
4.1	List of parts.....	8

1 Introduction

Purpose of this manual

The purpose of this manual is to provide necessary information on spare parts and accessories order.

Disclaimer

Always use genuine Flygt parts. The use of other spare parts or accessories can invalidate any claims for warranty or compensation. Xylem does not take any responsibility for damages that are caused by the use of non-original parts. For more information, contact your local sales and service representative.

Data for ordering spare parts

The following information is needed for spare part orders:

- Serial number of the product
- Part number
- Quantity of bulk material, see * in tables

1.1 Specially approved products

Qualification of personnel

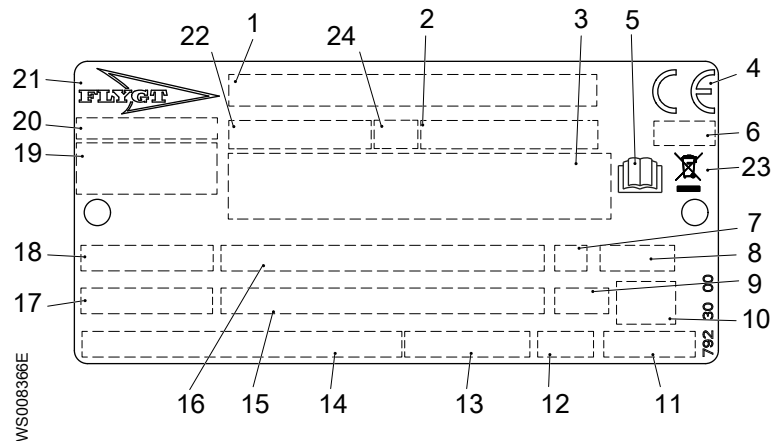
Only Xylem or Xylem-authorized service personnel may undertake repair work on specially approved products.

Dimensional accuracy inspection

Spare parts marked with (Ex) after the part number are subject to dimensional accuracy inspection when used in specially approved products.

2 Product Description

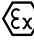
2.1 The data plate



1. Serial number, see [Product denomination](#) on page 4
2. Product number
3. Additional information
4. CE-marking
5. Read installation manual
6. Notified body (only for EN-approved Ex products)
7. Duty class
8. Degree of protection
9. Thermal class
10. Maximum submergence
11. Product weight
12. Direction of rotation: L=left, R=right
13. Speed
14. Minimum rated voltage/rated current – maximum rated voltage/rated current
15. Maximum ambient temperature (2), rated shaft power (2)
16. Maximum ambient temperature (1), rated shaft power (1)
17. Power factor
18. Phase, type of current, frequency
19. Manufacturer
20. Country of origin
21. Brand
22. Sales denomination
23. WEEE-Directive symbol
24. Hydraulic end, type of installation

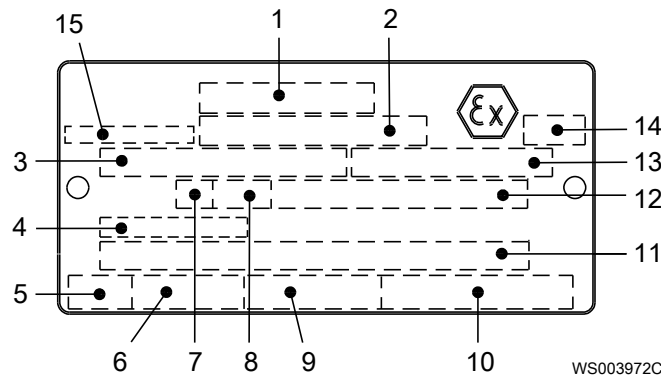
2.2 Approvals

Product approvals for hazardous locations

Product	Approval
4320.091	European Norm (EN) <ul style="list-style-type: none"> • ATEX Directive • EN IEC 60079-0:2018, EN 60079-1:2014, EN ISO 80079-36:2016, EN ISO 80079-37:2016 •  II 2 G Ex db h IIB T4 Gb
	IEC <ul style="list-style-type: none"> • IECEx scheme • IEC 60079-0:2017, IEC 60079-1:2014-06, ISO 80079-36:2016, ISO 80079-37:2016 • Ex db h IIB T4 Gb
	FM (FM Approvals) <ul style="list-style-type: none"> • Explosion proof for use in Class I, Div. 1, Group C and D

EN approval plate

This illustration describes the EN approval plate and the information that is contained in its fields.

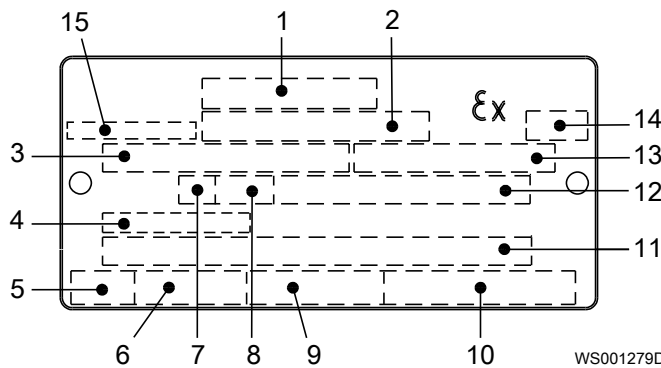


1. Approval
2. Approval authority and Approval number
3. Approved drive unit
4. Cable entry temperature
5. Stall time
6. Starting current or Rated current
7. Duty class
8. Duty factor
9. Input power
10. Rated speed
11. Additional information
12. Maximum ambient temperature
13. Serial number
14. ATEX marking
15. Country of origin

IEC approval plate

This illustration describes the IEC approval plate and the information that is contained in its fields.

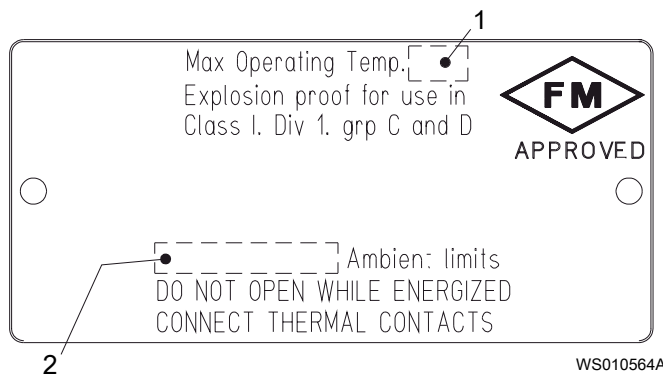
International Norm; not for EU member countries.



1. Approval
2. Approval authority and Approval number
3. Approved drive unit
4. Cable entry temperature
5. Stall time
6. Starting current or Rated current
7. Duty class
8. Duty factor
9. Input power
10. Rated speed
11. Additional information
12. Maximum ambient temperature
13. Serial number
14. ATEX marking
15. Country of origin

FM approval plate

This illustration describes the FM approval plate and the information that is contained in its fields.



1. Temperature class
2. Maximum ambient temperature

2.3 Product denomination

Reading instruction

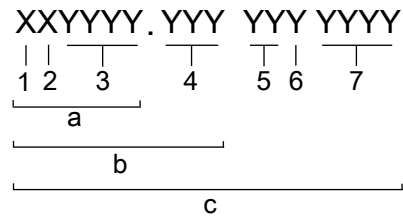
In this section, code characters are illustrated accordingly:

X = letter

Y = digit

The different types of codes are marked up with a, b and c. Code parameters are marked up with numbers.

Codes and parameters

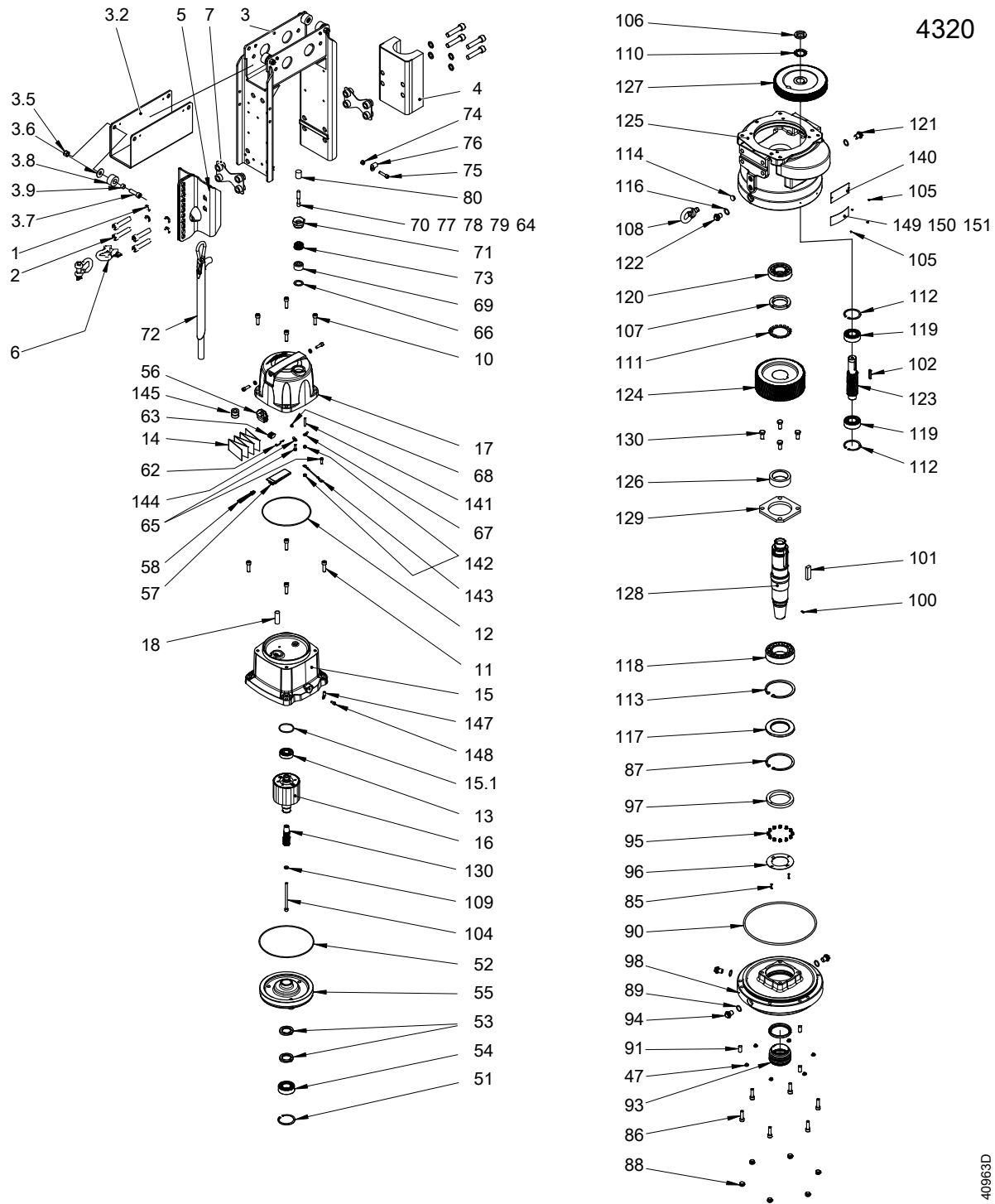


WS006265B

Type of Callout	Number	Indication
Type of code	a	Sales denomination
	b	Product code
	c	Serial number
Parameter	1	Hydraulic end
	2	Type of installation
	3	Sales code
	4	Version
	5	Production year
	6	Production cycle
	7	Running number

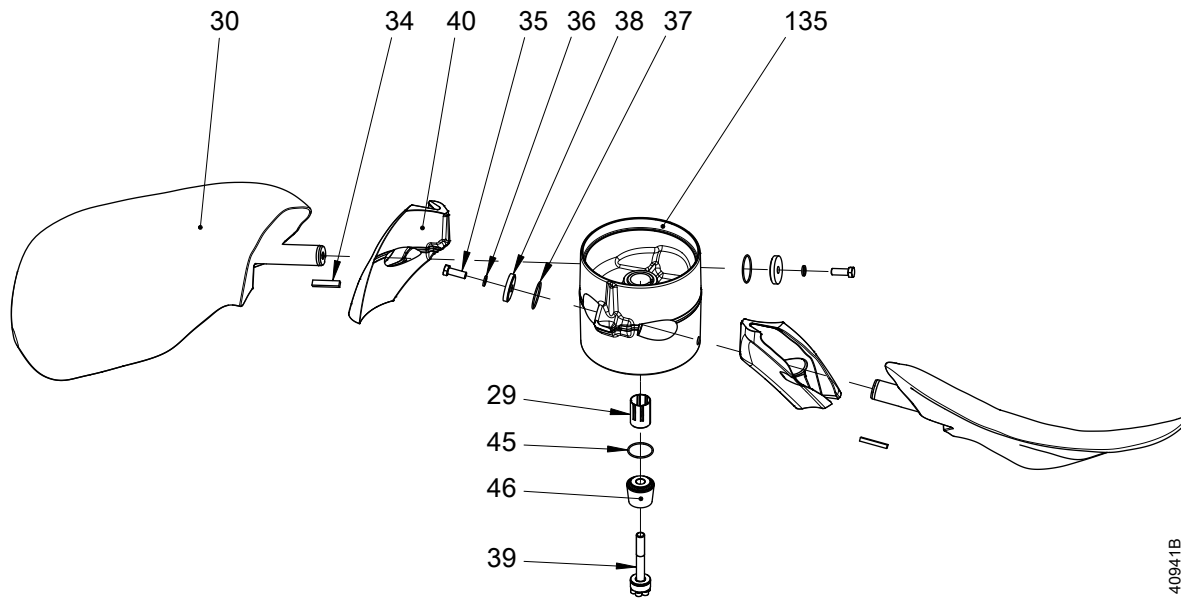
3 Exploded View

3.1 Drive unit



40963D

3.2 Hydraulic unit



40941B

4 List of Parts

4.1 List of parts

Pos. No	Part. No	Type	Denomination	Qty/Version		
				011	091	
1	82 50 19		Lock washer M16	8	8	
2	83 03 76		Hex.socket hd screw M16X70-A4-70	8	8	
3	481 95 10		Stand unit	Hydraulic stationary parts Stand Installation: Guided Guide bar: 100 x 100 mm	1	1
3	481 95 12		Stand unit	Hydraulic stationary parts Stand Installation: Guided Guide bar: 100 x 150 mm	1	1
3	481 95 11		Stand unit	Hydraulic stationary parts Extended stand for threaded cable entry Installation: Guided Guide bar: 100 x 150 mm	1	
4	482 04 02		Support		1	1
5	842 76 00		Lifting handle		1	1
6	82 26 49		Shackle		2	2
7	851 77 00	(Ex)	Distance block		2	2
10	82 00 53		Hex.socket hd screw M10X35-A2-70			4
11	82 00 53		Hex.socket hd screw M10X35-A2-70			4
12	82 78 35		O-ring 175X3 NBR		1	1
13	83 33 13		Ball bearing 20X52X15 MM		1	1
14	791 48 05		Connection plate		1	1
15	793 91 02		Stator housing unit		1	
15	793 91 01	(Ex)	Stator housing unit			1
16	852 31 00	(Ex)	Shaft unit		1	1
17	813 58 24		Conn. housing kit	Dirigo (TM): Combined motor and control system with temperature monitoring Leakage sensor in stator housing: Maximum power: 1,10 kW Maximum current: 2,10 A Voltage interval: 380- 480 V	1	

Pos. No	Part. No	Type	Denomination	Qty/Version	
				011	091
17	813 58 28		Conn. housing kit Dirigo (TM): Combined motor and control system with temperature monitoring Leakage sensor in stator housing: Maximum power: 2,20 kW Maximum current: 4,10 A Voltage interval: 380- 480 V Dirigo (TM): Combined motor and control system with temperature monitoring Leakage sensor in stator housing: Maximum power: 2 kW Maximum current: 4,10 A Voltage interval: 380- 480 V	1	
17	813 58 32		Conn. housing kit Dirigo (TM): Combined motor and control system with temperature monitoring Leakage sensor in stator housing: Maximum power: 4 kW Maximum current: 7,40 A Voltage interval: 380- 480 V	1	
17	813 58 34		Conn. housing kit Dirigo (TM): Combined motor and control system with temperature monitoring Leakage sensor in stator housing: Maximum power: 5,50 kW Maximum current: 9,90 A Voltage interval: 380- 480 V	1	
17	813 58 25		Conn. housing kit Dirigo (TM): Combined motor and control system with temperature monitoring Leakage sensor in stator housing: Maximum power: 1,10 kW Maximum current: 2,10 A Voltage interval: 380- 480 V		1
17	813 58 29		Conn. housing kit Dirigo (TM): Combined motor and control system with temperature monitoring Leakage sensor in stator housing: Maximum power: 2,20 kW Maximum current: 4,10 A Voltage interval: 380- 480 V Dirigo (TM): Combined motor and control system with temperature monitoring Leakage sensor in stator housing: Maximum power: 2 kW Maximum current: 4,10 A Voltage interval: 380- 480 V		1
17	813 58 33		Conn. housing kit Dirigo (TM): Combined motor and control system with temperature monitoring Leakage sensor in stator housing: Maximum power: 4 kW Maximum current: 7,40 A Voltage interval: 380- 480 V		1

Pos. No	Part. No	Type	Denomination	Qty/Version		
				011	091	
17	813 58 35		Conn. housing kit	Dirigo (TM): Combined motor and control system with temperature monitoring Leakage sensor in stator housing: Maximum power: 5,50 kW Maximum current: 9,90 A Voltage interval: 380- 480 V		1
18	836 39 00		Insulating hose		1	1
29	720 16 01		Sleeve unit		1	1
30	549 09 11		Propeller blade	OD: 1400 mm	2	2
30	549 09 05		Propeller blade	OD: 1600 mm	2	2
30	549 09 03		Propeller blade	OD: 1800 mm	2	2
30	549 09 02		Propeller blade	OD: 2000 mm	2	2
30	549 09 01		Propeller blade	OD: 2200 mm	2	2
30	549 09 00		Propeller blade	OD: 2500 mm	2	2
30	549 09 11		Propeller blade	OD: 1400 mm	3	3
30	549 09 05		Propeller blade	OD: 1600 mm	3	3
30	549 09 03		Propeller blade	OD: 1800 mm	3	3
30	549 09 02		Propeller blade	OD: 2000 mm	3	3
30	549 09 01		Propeller blade	OD: 2200 mm	3	3
30	549 09 00		Propeller blade	OD: 2500 mm	3	3
34	80 46 27		Parallel key 14H9X9H11X70	Propeller Material: Polyurethane plastic (Glass fiber reinforced) Number of blades: 2 OD: 2000 mm Propeller Material: Polyurethane plastic (Glass fiber reinforced) Number of blades: 2 OD: 2500 mm Propeller Material: Polyurethane plastic (Glass fiber reinforced) Number of blades: 2 OD: 1400 mm Propeller Material: Polyurethane plastic (Glass fiber reinforced) Number of blades: 3 OD: 2500 mm Propeller Material: Polyurethane plastic (Glass fiber reinforced) Number of blades: 3 OD: 2000 mm Propeller Material: Polyurethane plastic (Glass fiber reinforced) Number of blades: 3 OD: 1400 mm	2	2

Pos. No	Part. No	Type	Denomination	Qty/Version		
				011	091	
34	80 46 27		Parallel key 14H9X9H11X70	<p>Propeller Material: Polyurethane plastic (Glass fiber reinforced) Number of blades: 2 OD: 2000 mm</p> <p>Propeller Material: Polyurethane plastic (Glass fiber reinforced) Number of blades: 2 OD: 2500 mm</p> <p>Propeller Material: Polyurethane plastic (Glass fiber reinforced) Number of blades: 2 OD: 1400 mm</p> <p>Propeller Material: Polyurethane plastic (Glass fiber reinforced) Number of blades: 3 OD: 2500 mm</p> <p>Propeller Material: Polyurethane plastic (Glass fiber reinforced) Number of blades: 3 OD: 2000 mm</p> <p>Propeller Material: Polyurethane plastic (Glass fiber reinforced) Number of blades: 3 OD: 1400 mm</p>	3	3
35	81 49 32		Hexagon head screw M16X45-A4-70	<p>Propeller Material: Polyurethane plastic (Glass fiber reinforced) Number of blades: 2 OD: 2000 mm</p> <p>Propeller Material: Polyurethane plastic (Glass fiber reinforced) Number of blades: 2 OD: 2500 mm</p> <p>Propeller Material: Polyurethane plastic (Glass fiber reinforced) Number of blades: 2 OD: 1400 mm</p> <p>Propeller Material: Polyurethane plastic (Glass fiber reinforced) Number of blades: 3 OD: 2500 mm</p> <p>Propeller Material: Polyurethane plastic (Glass fiber reinforced) Number of blades: 3 OD: 2000 mm</p> <p>Propeller Material: Polyurethane plastic (Glass fiber reinforced) Number of blades: 3 OD: 1400 mm</p>	2	2

4 List of Parts

Pos. No	Part. No	Type	Denomination	Qty/Version		
				011	091	
35	81 49 32		Hexagon head screw M16X45-A4-70	<p>Propeller Material: Polyurethane plastic (Glass fiber reinforced) Number of blades: 2 OD: 2000 mm</p> <p>Propeller Material: Polyurethane plastic (Glass fiber reinforced) Number of blades: 2 OD: 2500 mm</p> <p>Propeller Material: Polyurethane plastic (Glass fiber reinforced) Number of blades: 2 OD: 1400 mm</p> <p>Propeller Material: Polyurethane plastic (Glass fiber reinforced) Number of blades: 3 OD: 2500 mm</p> <p>Propeller Material: Polyurethane plastic (Glass fiber reinforced) Number of blades: 3 OD: 2000 mm</p> <p>Propeller Material: Polyurethane plastic (Glass fiber reinforced) Number of blades: 3 OD: 1400 mm</p>	3	3
36	82 50 19		Lock washer M16	<p>Propeller Material: Polyurethane plastic (Glass fiber reinforced) Number of blades: 2 OD: 2000 mm</p> <p>Propeller Material: Polyurethane plastic (Glass fiber reinforced) Number of blades: 2 OD: 2500 mm</p> <p>Propeller Material: Polyurethane plastic (Glass fiber reinforced) Number of blades: 2 OD: 1400 mm</p> <p>Propeller Material: Polyurethane plastic (Glass fiber reinforced) Number of blades: 3 OD: 2500 mm</p> <p>Propeller Material: Polyurethane plastic (Glass fiber reinforced) Number of blades: 3 OD: 2000 mm</p> <p>Propeller Material: Polyurethane plastic (Glass fiber reinforced) Number of blades: 3 OD: 1400 mm</p>	2	2

Pos. No	Part. No	Type	Denomination	Qty/Version		
				011	091	
36	82 50 19		Lock washer M16	Propeller Material: Polyurethane plastic (Glass fiber reinforced) Number of blades: 2 OD: 2000 mm Propeller Material: Polyurethane plastic (Glass fiber reinforced) Number of blades: 2 OD: 2500 mm Propeller Material: Polyurethane plastic (Glass fiber reinforced) Number of blades: 2 OD: 1400 mm Propeller Material: Polyurethane plastic (Glass fiber reinforced) Number of blades: 3 OD: 2500 mm Propeller Material: Polyurethane plastic (Glass fiber reinforced) Number of blades: 3 OD: 2000 mm Propeller Material: Polyurethane plastic (Glass fiber reinforced) Number of blades: 3 OD: 1400 mm	3	3
37	82 74 66		O-ring 64.5X3 NBR	Propeller Material: Polyurethane plastic (Glass fiber reinforced) Number of blades: 2 OD: 2000 mm Propeller Material: Polyurethane plastic (Glass fiber reinforced) Number of blades: 2 OD: 2500 mm Propeller Material: Polyurethane plastic (Glass fiber reinforced) Number of blades: 2 OD: 1400 mm Propeller Material: Polyurethane plastic (Glass fiber reinforced) Number of blades: 3 OD: 2500 mm Propeller Material: Polyurethane plastic (Glass fiber reinforced) Number of blades: 3 OD: 2000 mm Propeller Material: Polyurethane plastic (Glass fiber reinforced) Number of blades: 3 OD: 1400 mm	2	2

Pos. No	Part. No	Type	Denomination	Qty/Version		
				011	091	
37	82 74 66		O-ring 64.5X3 NBR	<p>Propeller Material: Polyurethane plastic (Glass fiber reinforced) Number of blades: 2 OD: 2000 mm</p> <p>Propeller Material: Polyurethane plastic (Glass fiber reinforced) Number of blades: 2 OD: 2500 mm</p> <p>Propeller Material: Polyurethane plastic (Glass fiber reinforced) Number of blades: 2 OD: 1400 mm</p> <p>Propeller Material: Polyurethane plastic (Glass fiber reinforced) Number of blades: 3 OD: 2500 mm</p> <p>Propeller Material: Polyurethane plastic (Glass fiber reinforced) Number of blades: 3 OD: 2000 mm</p> <p>Propeller Material: Polyurethane plastic (Glass fiber reinforced) Number of blades: 3 OD: 1400 mm</p>	3	3
38	494 78 01		Supporting washer	<p>Propeller Material: Polyurethane plastic (Glass fiber reinforced) Number of blades: 2 OD: 2000 mm</p> <p>Propeller Material: Polyurethane plastic (Glass fiber reinforced) Number of blades: 2 OD: 2500 mm</p> <p>Propeller Material: Polyurethane plastic (Glass fiber reinforced) Number of blades: 2 OD: 1400 mm</p> <p>Propeller Material: Polyurethane plastic (Glass fiber reinforced) Number of blades: 3 OD: 2500 mm</p> <p>Propeller Material: Polyurethane plastic (Glass fiber reinforced) Number of blades: 3 OD: 2000 mm</p> <p>Propeller Material: Polyurethane plastic (Glass fiber reinforced) Number of blades: 3 OD: 1400 mm</p>	2	2

Pos. No	Part. No	Type	Denomination	Qty/Version	
				011	091
38	494 78 01		Supporting washer	3	3
			Propeller Material: Polyurethane plastic (Glass fiber reinforced) Number of blades: 2 OD: 2000 mm		
			Propeller Material: Polyurethane plastic (Glass fiber reinforced) Number of blades: 2 OD: 2500 mm		
			Propeller Material: Polyurethane plastic (Glass fiber reinforced) Number of blades: 2 OD: 1400 mm		
			Propeller Material: Polyurethane plastic (Glass fiber reinforced) Number of blades: 3 OD: 2500 mm		
			Propeller Material: Polyurethane plastic (Glass fiber reinforced) Number of blades: 3 OD: 2000 mm		
			Propeller Material: Polyurethane plastic (Glass fiber reinforced) Number of blades: 3 OD: 1400 mm		
39	716 70 01		Screw unit	1	1
40	791 13 00		Damper	2	2
			Propeller Material: Polyurethane plastic (Glass fiber reinforced) Number of blades: 2 OD: 2000 mm		
			Propeller Material: Polyurethane plastic (Glass fiber reinforced) Number of blades: 2 OD: 2500 mm		
			Propeller Material: Polyurethane plastic (Glass fiber reinforced) Number of blades: 2 OD: 1400 mm		
			Propeller Material: Polyurethane plastic (Glass fiber reinforced) Number of blades: 3 OD: 2500 mm		
			Propeller Material: Polyurethane plastic (Glass fiber reinforced) Number of blades: 3 OD: 2000 mm		
			Propeller Material: Polyurethane plastic (Glass fiber reinforced) Number of blades: 3 OD: 1400 mm		

Pos. No	Part. No	Type	Denomination	Qty/Version	
				011	091
40	791 13 00		Damper Propeller Material: Polyurethane plastic (Glass fiber reinforced) Number of blades: 2 OD: 2000 mm Propeller Material: Polyurethane plastic (Glass fiber reinforced) Number of blades: 2 OD: 2500 mm Propeller Material: Polyurethane plastic (Glass fiber reinforced) Number of blades: 2 OD: 1400 mm Propeller Material: Polyurethane plastic (Glass fiber reinforced) Number of blades: 3 OD: 2500 mm Propeller Material: Polyurethane plastic (Glass fiber reinforced) Number of blades: 3 OD: 2000 mm Propeller Material: Polyurethane plastic (Glass fiber reinforced) Number of blades: 3 OD: 1400 mm	3	3
45	82 77 96		O-ring 57.5X3 NBR	1	1
46	791 71 01		Supporting washer	1	1
47	82 69 42		Protective plug	6	6
51	82 62 12		Retaining ring SGH 62		1
52	82 78 37		O-ring 200X3-1 NBR	1	1
53	82 85 69		Seal ring	2	2
54	83 35 72		Roller bearing 22206 CC 30X62X20		1
55	814 30 00		Bearing housing	1	
55	814 30 01	(Ex)	Bearing housing		1
56	518 89 03	(Ex)	Leakage sensor	1	1
56	823 18 00		Holder	1	1
57	820 83 00		I/o unit	1	1
58	824 95 00		Cable unit	1	1
61	94 05 88		Insulating hose D=16 MM	*	*
62	573 58 70		Single-core cable	4	4
63	83 42 67		Terminal block 600V/20A UL	1	1
63	83 42 65		Terminal block 600V/20A UL		1
65	81 48 28		Hexagon head screw M6X20-A4-70	2	2
66	82 42 42		Plain washer 24.5X35X2-A4-70	1	1
67	85 10 24		Cable lug	1	1
68	83 45 59		Cable tie 200X2.4 PA 6/6 -55+105	1	1
69	84 17 94		Seal sleeve (18)-20 MM NBR	1	1

Pos. No	Part. No	Type	Denomination	Qty/Version	
				011	091
70	94 19 90		Motor cable subcab S3X2.5+3X2.5/3+S(4X0.5)	*	*
71	397 81 00	(Ex)	Gland screw Pr 37	1	1
			Cable and cable entry 10 m SUBCAB S3x2.5+3x2.5/3+S(4x0.5) With cable handling kit		
			Cable and cable entry 20 m SUBCAB S3x2.5+3x2.5/3+S(4x0.5) With cable handling kit		
71	791 15 00		Gland screw ISO G1 1/4"	1	
			Cable and cable entry 20 m SUBCAB S3x2.5+3x2.5/3+S(4x0.5) Thread: ISO G1 1/4 With cable handling kit		
			Cable and cable entry 10 m SUBCAB S3x2.5+3x2.5/3+S(4x0.5) Thread: ISO G1 1/4 With cable handling kit		
72	85 08 94		End sleeve	4	4
73	678 58 20	(Ex)	Cable clip 18-(20) MM	1	1
74	82 27 26		Lock nut M6-A4-70	1	1
75	82 27 27		Lock nut M8-A4-70	2	2
76	85 09 83		Cable holder	1	1
77	93 00 77		Shrink hose ID=6.4 MM	*	*
78	94 03 33		Shrink hose ID=3.2 MM	*	*
79	94 03 34		Shrink hose ID=6.4 MM	*	*
80	82 97 67		Cap 17X25 MM PVC	1	1
81	838 12 01		Bending protection	1	1
82	846 46 00		Bracket	1	1
83	846 65 00		Bracket	1	1
84	83 04 45		Hex.socket hd screw M8X35- A4-80	2	2
85	80 57 71		Tension pin	2	
85	80 57 71		Tension pin		2
86	82 00 53		Hex.socket hd screw M10X35- A2-70		6
87	82 62 30		Retaining ring SGH 105	1	
87	82 62 30		Retaining ring SGH 105		1
88	82 69 50		Protective plug M20	6	
88	82 69 50		Protective plug M20		6
89	82 73 90		O-ring 19.2X3 NBR		3
90	82 75 00		O-ring 269.3X5.7 NBR	1	
90	82 75 00		O-ring 269.3X5.7 NBR		1
91	84 69 54		Set screw	3	
91	84 69 54		Set screw		3
92	382 83 00		Wear protection NBR-A2	1	
92	382 83 00		Wear protection NBR-A2		1

Pos. No	Part. No	Type	Denomination	Qty/Version	
				011	091
93	384 03 10		Mechanical seal WCCR/WCCR FPM	1	
93	384 03 10		Mechanical seal WCCR/WCCR FPM		1
94	428 22 17		Inspection screw BRASS		3
95	456 71 00		Compression spring	12	
95	456 71 00		Compression spring		12
96	464 59 00		Washer 63X104X1.5	1	
96	464 59 00		Washer 63X104X1.5		1
97	493 97 00		Ring	1	
97	493 97 00		Ring		1
98	756 99 00		Seal housing	1	
98	756 99 00		Seal housing		1
100	80 23 05		Parallel pin CP-H8-4X10-1650	1	1
101	80 46 31		Parallel key 18H9X11H11X56	1	1
102	80 70 62		Parallel key 8H9X7H11X40	1	1
103	81 41 54		Hexagon head screw M12X25- A2-70	4	4
104	81 78 60		Hex.socket hd screw M8X120- A2-70	1	1
105	82 20 88		Drive screw 4X5-A2/A4	4	8
106	82 22 31		Round nut M30X1.5	1	1
107	82 22 37		Round nut M60X2	1	1
108	82 31 15		Lifting eye bolt	1	1
109	82 37 03		Plain washer 8.4X16X3- A2-170HV	1	1
110	82 51 31		Lock washer	1	1
111	82 51 37		Lock washer	1	1
112	82 62 12		Retaining ring SGH 62		2
113	82 62 32		Retaining ring SGH 110	1	1
114	82 69 41		Protective plug F11	1	1
116	82 73 90		O-ring 19.2X3 NBR		2
117	82 85 52		Seal ring 70X110X8 NITRIL	1	1
118	83 35 23		Roller bearing 60X110X28	1	1
119	83 35 72		Roller bearing 22206 CC 30X62X20		2
120	84 53 76		Roller bearing ECP(40X90X23)	1	1
121	416 94 00		Inspection screw	1	1
122	428 22 17		Inspection screw BRASS		1
123	464 48 05		Shaft	1	1
124	464 49 05		Gear	1	1
125	464 51 06	(Ex)	Gear housing	1	1
126	464 61 02		Ring	1	1
127	690 86 01		Gear	1	1
128	757 01 01		Shaft	1	1
129	775 80 01		Supporting washer	1	1

Pos. No	Part. No	Type	Denomination	Qty/Version	
				011	091
130	790 27 16		Gear	1	1
135	771 83 06		Propeller hub Coating and hub Coating: according to Flygt standard M0700.00.0004 Coating thickness: Minimum 120 micrometer 3-blade propeller hub Propeller blade material: Polyurethane	1	1
135	771 83 07		Propeller hub Coating and hub Coating: according to Flygt standard M0700.00.0008 Coating thickness: Minimum 360 micrometer 3-blade propeller hub Propeller blade material: Polyurethane	1	1
135	771 83 08		Propeller hub Coating and hub Coating: according to Flygt standard M0700.00.0011 Coating thickness: 450-550 micrometer 3-blade propeller hub Propeller blade material: Polyurethane	1	1
135	771 83 05		Propeller hub Coating and hub Coating: Primer according to Flygt standard M0700.00.0002 Coating thickness: Minimum 15 micrometer 3-blade propeller hub Propeller blade material: Polyurethane	1	1
135	777 90 11		Propeller hub Coating and hub Coating: according to Flygt standard M0700.00.0004 Coating thickness: Minimum 120 micrometer 2-blade propeller hub Propeller blade material: Polyurethane	1	1
135	777 90 12		Propeller hub Coating and hub Coating: according to Flygt standard M0700.00.0008 Coating thickness: Minimum 360 micrometer 2-blade propeller hub Propeller blade material: Polyurethane	1	1
135	777 90 13		Propeller hub Coating and hub Coating: according to Flygt standard M0700.00.0011 Coating thickness: 450-550 micrometer 2-blade propeller hub Propeller blade material: Polyurethane	1	1
135	777 90 10		Propeller hub Coating and hub Coating: Primer according to Flygt standard M0700.00.0002 Coating thickness: Minimum 15 micrometer 2-blade propeller hub Propeller blade material: Polyurethane	1	1
140	792 30 00		Data plate	2	2

Pos. No	Part. No	Type	Denomination	Qty/Version	
				011	091
141	84 45 45		Stud	1	1
142	82 23 31		Hexagon nut M6-A4-70	2	2
143	573 58 20		Single-core cable	1	1
144	83 43 62		Cable lug UL/CSA 0.50-1.65 MM2 M6	1	1
145	83 95 06		Electrical filter	2	2
147	85 10 24		Cable lug		1
148	82 00 11		Hex.socket hd screw M6X12- A2-70		1
149	796 04 00	(Ex)	Certificate plate		1
150	796 04 01	(Ex)	Certificate plate		1
151	796 03 10	(Ex)	Certificate plate		1
400	667 40 00		Sticker	2	2
401	726 37 00		Caution label	3	3
402	820 22 00		Sticker	2	2
800	85 03 03		O-ring kits	1	1
813	823 26 04		Handling kit	1	1
			Cable and cable entry 10 m SUBCAB S3x2.5+3x2.5/3+S(4x0.5) With cable handling kit		
			Cable and cable entry 10 m SUBCAB S3x2.5+3x2.5/3+S(4x0.5) Thread: ISO G1 1/4 With cable handling kit		
813	823 26 05		Handling kit	1	1
			Cable and cable entry 20 m SUBCAB S3x2.5+3x2.5/3+S(4x0.5) With cable handling kit		
813	823 26 06		Handling kit	1	
			Cable and cable entry 20 m SUBCAB S3x2.5+3x2.5/3+S(4x0.5) Thread: ISO G1 1/4 With cable handling kit		
900	812 48 00		Basic repair kit	1	1
901	90 17 52		Oil ISO VG 32	*	
901	90 17 58		Oil GEAR UNITS	5	5
			Gearbox Reduction ratio: 39.35:1 Maximum temperature: 40 deg C		
912	82 73 90		O-ring 19.2X3 NBR		5
915	659 35 00		Mounting kit MBBR	1	1

Xylem |'zīləm|

- 1) The tissue in plants that brings water upward from the roots;
- 2) a leading global water technology company.

We're a global team unified in a common purpose: creating advanced technology solutions to the world's water challenges. Developing new technologies that will improve the way water is used, conserved, and re-used in the future is central to our work. Our products and services move, treat, analyze, monitor and return water to the environment, in public utility, industrial, residential and commercial building services settings. Xylem also provides a leading portfolio of smart metering, network technologies and advanced analytics solutions for water, electric and gas utilities. In more than 150 countries, we have strong, long-standing relationships with customers who know us for our powerful combination of leading product brands and applications expertise with a strong focus on developing comprehensive, sustainable solutions.

For more information on how Xylem can help you, go to www.xylem.com



Xylem Water Solutions Global
Services AB 556782-9253
361 80 Emmaboda
Sweden
Tel: +46-471-24 70 00
Fax: +46-471-24 74 01
<http://tpi.xylem.com>
[www.xylemwatersolutions.com/
contacts/](http://www.xylemwatersolutions.com/contacts/)

Visit our Web site for the latest version of this document and more information

The original instruction is in English. All non-English instructions are translations of the original instruction.

© 2019 Xylem Inc