

Flygt 4430

Table of Contents

1	Introduction.....	2
1.1	Specially approved products.....	2
2	Product Description.....	3
2.1	The data plate.....	3
2.2	Approvals.....	3
2.3	Product denomination.....	5
3	Exploded View.....	6
3.1	Drive unit.....	6
3.2	Hydraulic unit.....	7
3.3	Installation components.....	8
4	List of Parts.....	11
4.1	4430.010/090.....	11

1 Introduction

Purpose of this manual

The purpose of this manual is to provide necessary information on spare parts and accessories order.

Disclaimer

Always use genuine Flygt parts. The use of other spare parts or accessories can invalidate any claims for warranty or compensation. Xylem does not take any responsibility for damages that are caused by the use of non-original parts. For more information, contact your local sales and service representative.

Data for ordering spare parts

The following information is needed for spare part orders:

- Serial number of the product
- Part number
- Quantity of bulk material, see * in tables

1.1 Specially approved products

Qualification of personnel

Only Xylem or Xylem-authorized service personnel may undertake repair work on specially approved products.

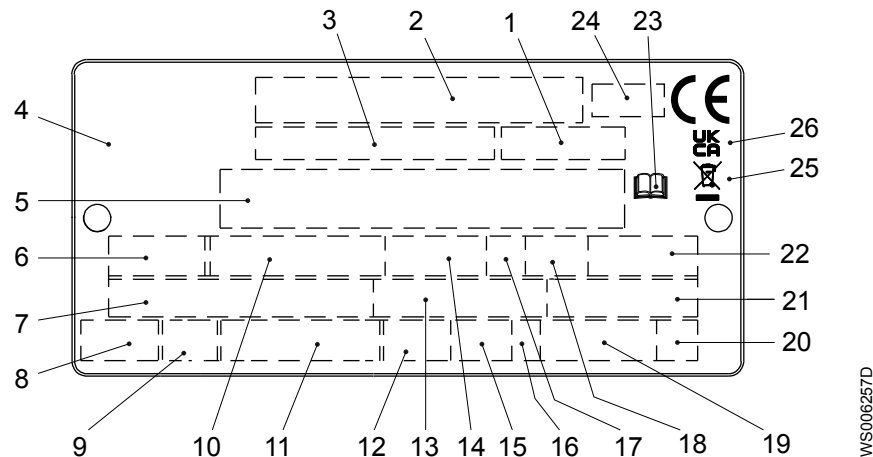
Dimensional accuracy inspection

Spare parts marked with (Ex) after the part number are subject to dimensional accuracy inspection when used in specially approved products.

2 Product Description

2.1 The data plate

The data plate is a metal label that is located on the main body of the products. The data plate lists key product specifications. Specially approved products also have an approval plate.



1. Curve code or Propeller code
2. Serial number
3. Product number
4. Country of origin
5. Additional information
6. Phase; type of current; frequency
7. Rated voltage
8. Thermal protection
9. Thermal class
10. Rated shaft power
11. International standard
12. Degree of protection
13. Rated current
14. Rated speed
15. Maximum submergence
16. Direction of rotation: L=left, R=right
17. Duty class
18. Duty factor
19. Product weight
20. Locked rotor code letter
21. Power factor
22. Maximum ambient temperature
23. Read installation manual
24. Notified body, only for EN-approved Ex products
25. WEEE-Directive symbol
26. UKCA marking

Figure 1: The data plate

2.2 Approvals

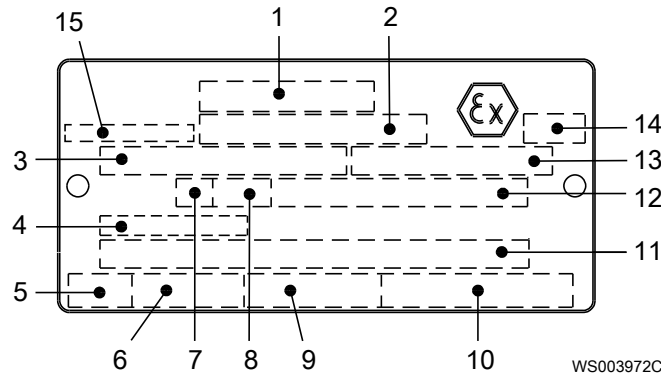
Product approvals for hazardous locations

Product	Approval
4430.090	European Norm (EN) <ul style="list-style-type: none"> • ATEX Directive • EN IEC 60079-0:2018, EN 60079-1:2014, EN ISO 80079-36:2016, EN ISO 80079-37:2016 • Ex II 2 G Ex db h IIB T4 Gb

Product	Approval
	IEC <ul style="list-style-type: none"> • IECEx scheme • IEC 60079-0:2017, IEC 60079-1:2014-06, ISO 80079-36:2016, ISO 80079-37:2016 • Ex db h IIB T4 Gb

EN approval plate

This illustration describes the EN approval plate and the information that is contained in its fields.

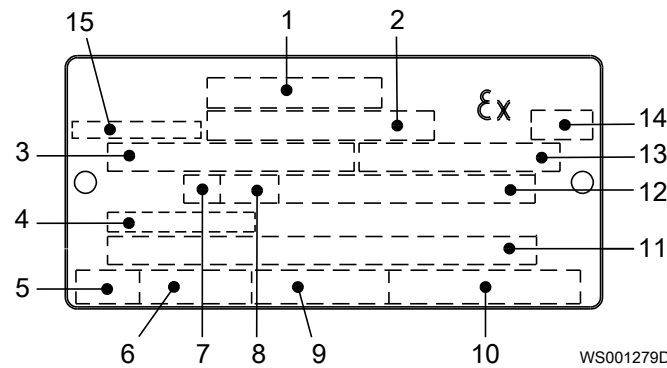


1. Approval
2. Approval authority and Approval number
3. Approved drive unit
4. Cable entry temperature
5. Stall time
6. Starting current or Rated current
7. Duty class
8. Duty factor
9. Input power
10. Rated speed
11. Additional information
12. Maximum ambient temperature
13. Serial number
14. ATEX marking
15. Country of origin

IEC approval plate

This illustration describes the IEC approval plate and the information that is contained in its fields.

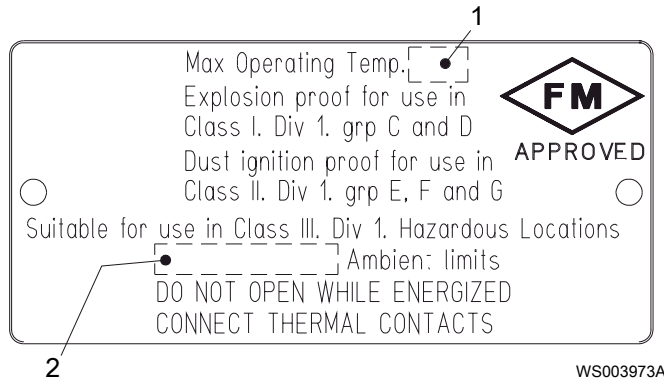
International Norm; not for EU member countries.



1. Approval
2. Approval authority and Approval number
3. Approved drive unit
4. Cable entry temperature
5. Stall time
6. Starting current or Rated current
7. Duty class
8. Duty factor
9. Input power
10. Rated speed
11. Additional information
12. Maximum ambient temperature
13. Serial number
14. ATEX marking
15. Country of origin

FM approval plate

This illustration describes the FM approval plate and the information that is contained in its fields.



- 1. Temperature class
- 2. Maximum ambient temperature

2.3 Product denomination

Reading instruction

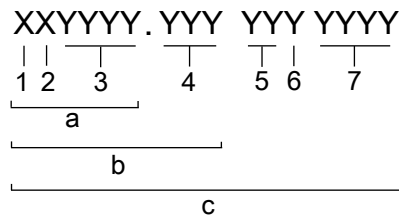
In this section, code characters are illustrated accordingly:

X = letter

Y = digit

The different types of codes are marked up with a, b and c. Code parameters are marked up with numbers.

Codes and parameters

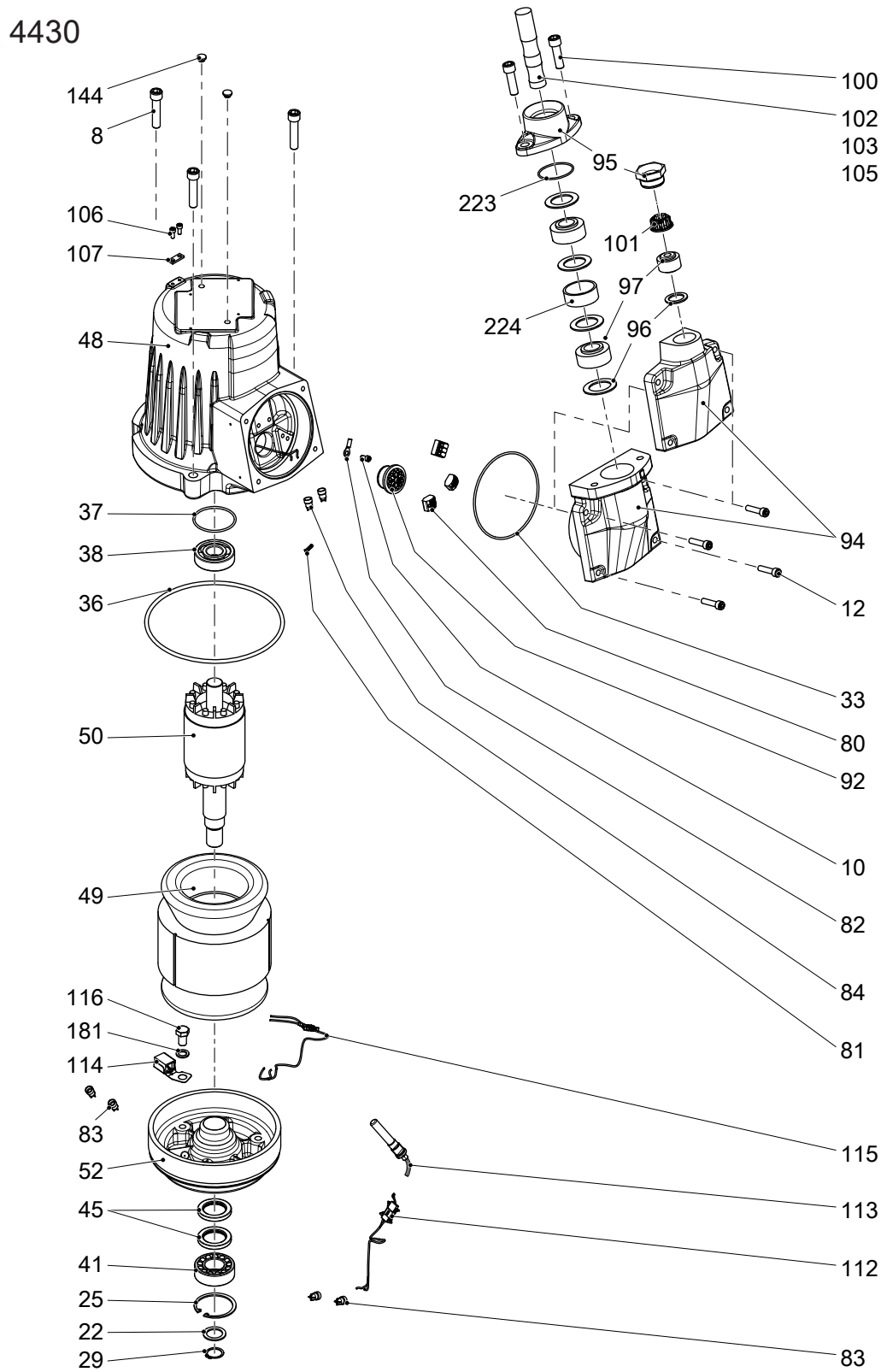


WS006265B

Type of Callout	Number	Indication
Type of code	a	Sales denomination
	b	Product code
	c	Serial number
Parameter	1	Hydraulic end
	2	Type of installation
	3	Sales code
	4	Version
	5	Production year
	6	Production cycle
	7	Running number

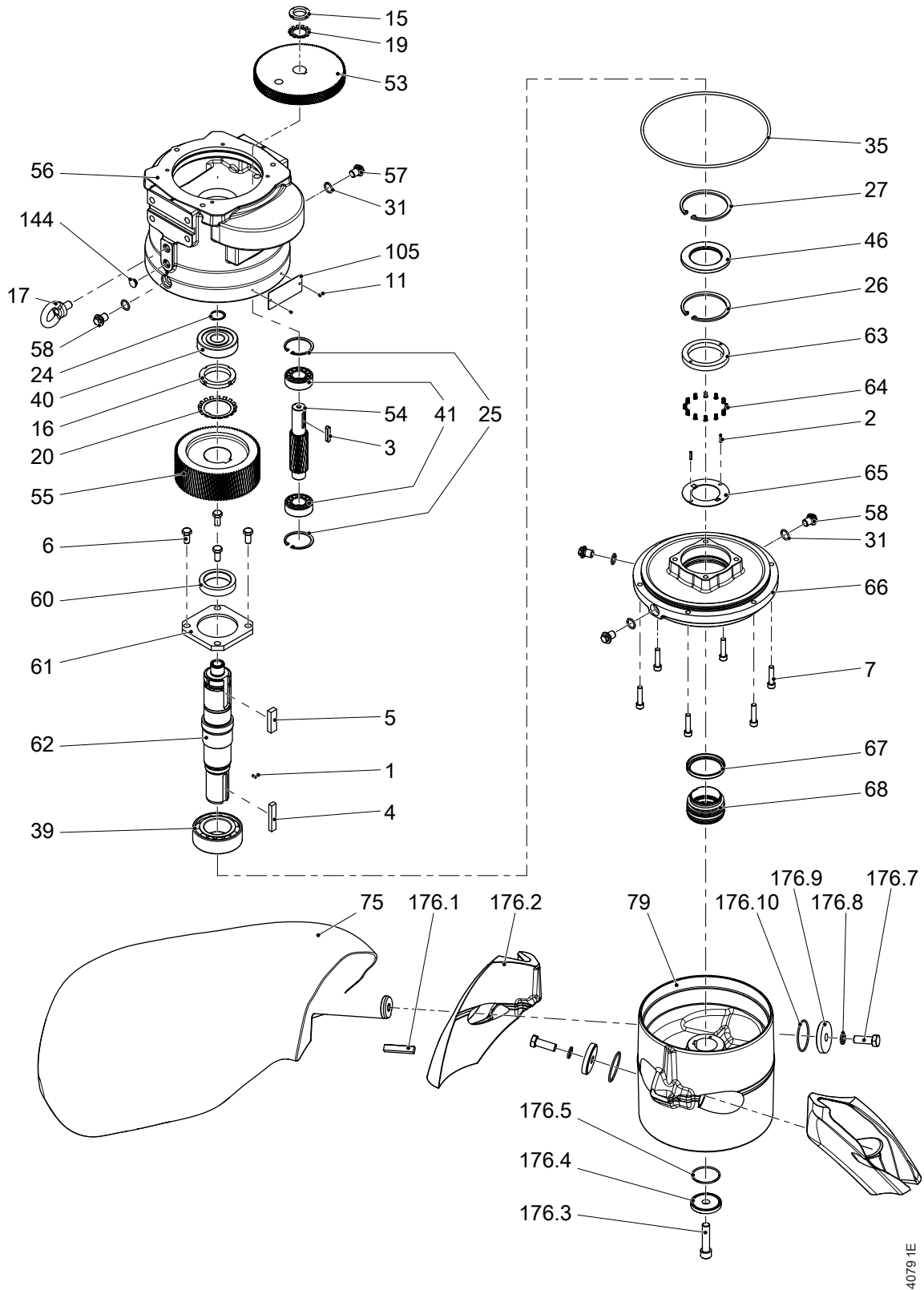
3 Exploded View

3.1 Drive unit



40919D

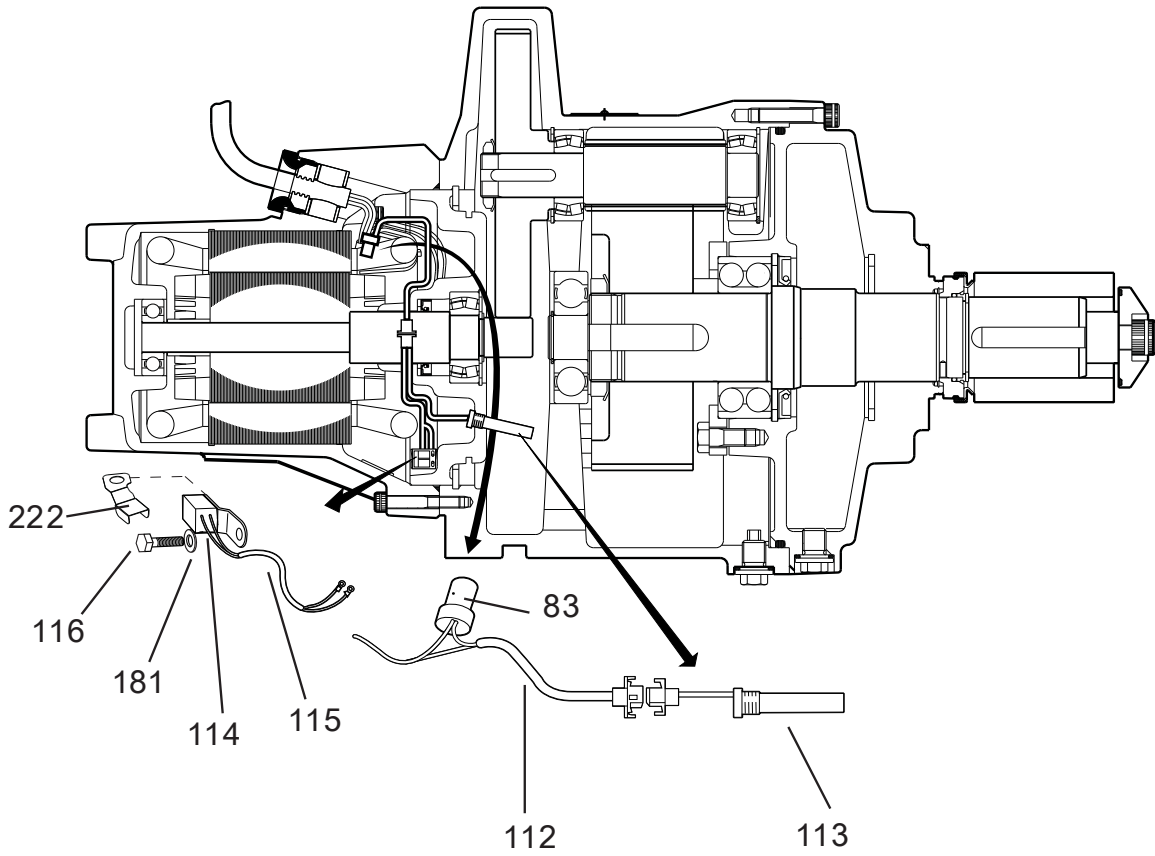
3.2 Hydraulic unit



4079 1E

3.3 Installation components

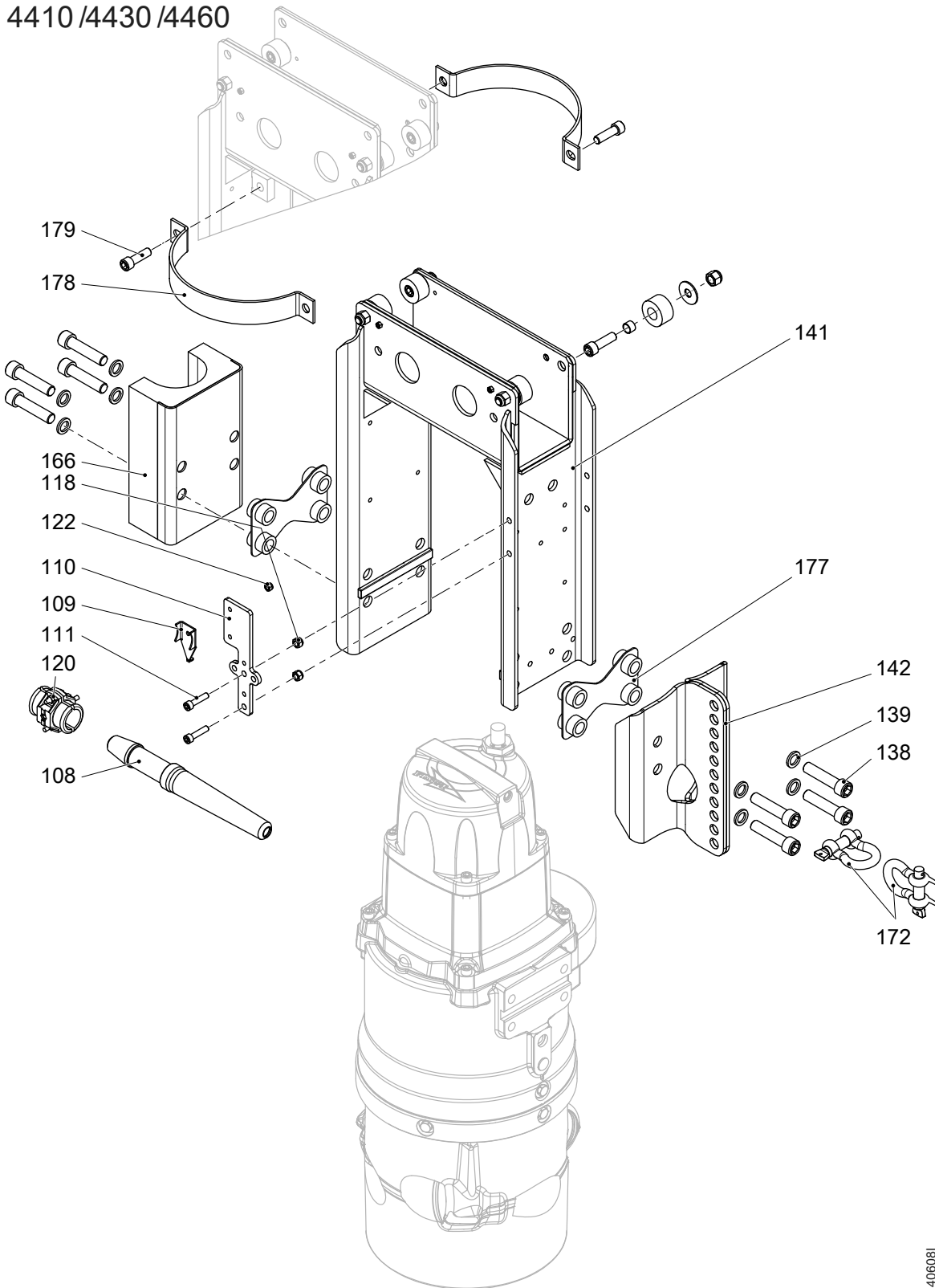
4410 /4430 /4460/4530



40822E

Figure 2: Leakage sensors

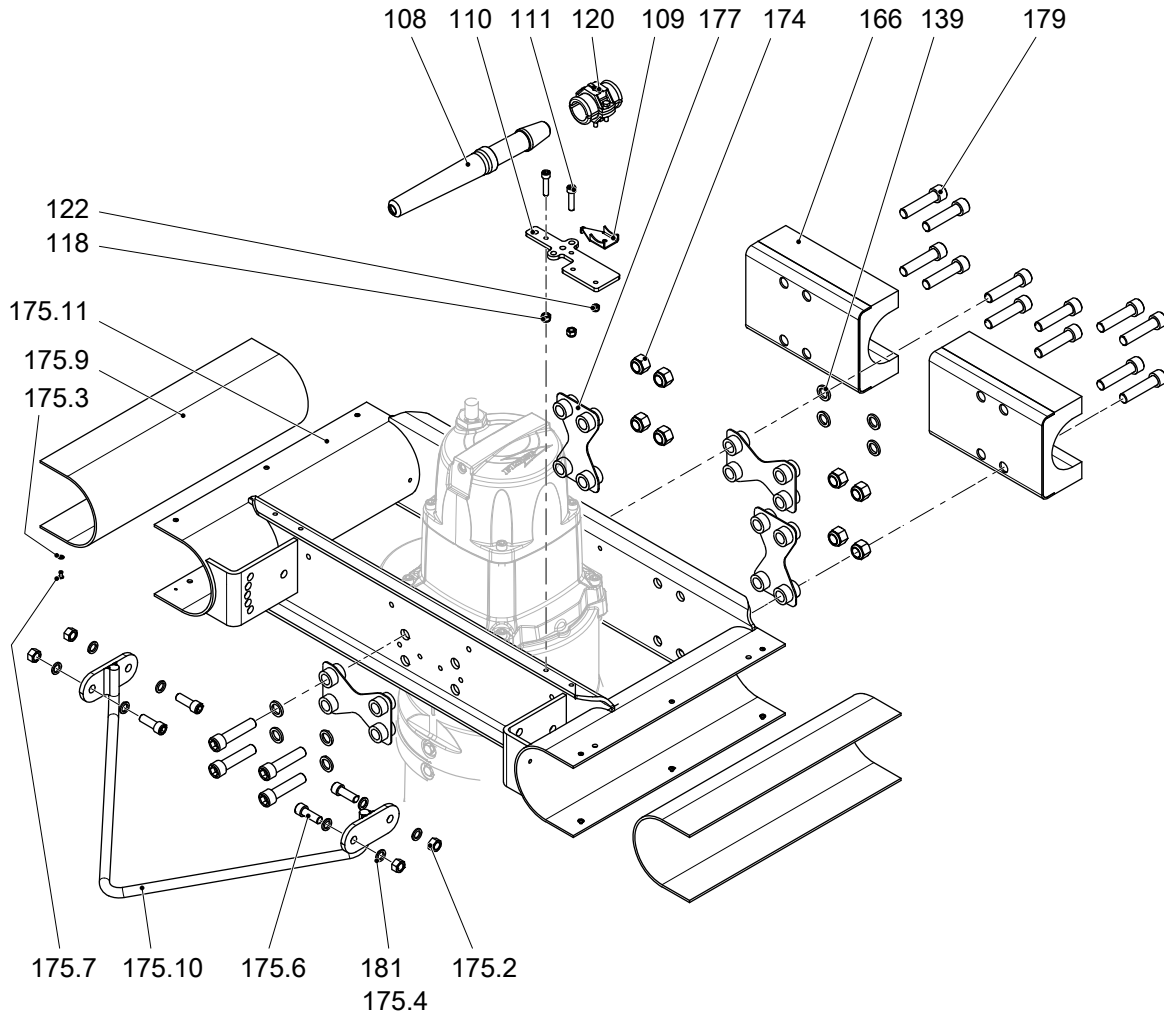
4410 /4430 /4460



406081

Figure 3: Tripod guide bar

4410 /4430 /4460



40614G

Figure 4: Double guide bar

4 List of Parts

4.1 4430.010/090

Pos. No	Part. No	Type	Denomination	Qty/Version	
				010	090
1	80 23 05		Parallel pin CP-H8-4X10-1650	1	1
2	80 57 71		Tension pin	2	2
3	80 70 62		Parallel key 8H9X7H11X40	1	1
4	80 46 27		Parallel key 14H9X9H11X70	1	1
5	80 46 31		Parallel key 18H9X11H11X56	1	1
6	81 41 54		Hexagon head screw M12X25-A2-70	4	4
7	83 03 27		Hex.socket hd screw M10X45-A4-70	6	6
8	83 03 51		Hex.socket hd screw M12X55-A4-70	3	3
10	82 17 61		Cutting screw TAPTITE-M6X12	2	2
11	82 20 88		Drive screw 4X5-A2/A4	6	10
12	83 04 45		Hex.socket hd screw M8X35-A4-80	4	4
15	82 22 31		Round nut M30X1.5	1	1
16	82 22 37		Round nut M60X2	1	1
17	82 31 15		Lifting eye bolt	1	1
19	82 51 31		Lock washer	1	1
20	82 51 37		Lock washer	1	1

Pos. No	Part. No	Type	Denomination	Qty/Version	
				010	090
22	82 44 09		Supporting washer 25X35X2 Reduction ratio: 56,64:1 Frequency: 50 Hz Number of Poles: 2 Propeller Speed: 52 rpm Reduction ratio: 40,81:1 Frequency: 50 Hz Number of Poles: 4 Propeller Speed: 36 rpm Reduction ratio: 40,81:1 Frequency: 60 Hz Number of Poles: 4 Propeller Speed: 43 rpm Reduction ratio: 56,64:1 Frequency: 50 Hz Number of Poles: 4 Propeller Speed: 26 rpm Reduction ratio: 56,64:1 Frequency: 60 Hz Number of Poles: 4 Propeller Speed: 32 rpm Reduction ratio: 52,71:1 Frequency: 50 Hz Number of Poles: 2 Propeller Speed: 55 rpm Reduction ratio: 52,71:1 Frequency: 50 Hz Number of Poles: 4 Propeller Speed: 28 rpm Reduction ratio: 52,71:1 Frequency: 60 Hz Number of Poles: 4 Propeller Speed: 34 rpm Reduction ratio: 36,39:1 Frequency: 50 Hz Number of Poles: 4 Propeller Speed: 40 rpm Reduction ratio: 36,39:1 Frequency: 60 Hz Number of Poles: 4 Propeller Speed: 48 rpm	1	1
22	82 44 11		Supporting washer 28X40X2 Reduction ratio: 44,96:1 Frequency: 50 Hz Number of Poles: 4 Propeller Speed: 33 rpm Reduction ratio: 44,96:1 Frequency: 60 Hz Number of Poles: 4 Propeller Speed: 39 rpm Reduction ratio: 34,80:1 Frequency: 50 Hz Number of Poles: 4 Propeller Speed: 42 rpm Reduction ratio: 34,80:1 Frequency: 60 Hz Number of Poles: 4 Propeller Speed: 50 rpm Reduction ratio: 31,04:1 Frequency: 50 Hz Number of Poles: 4 Propeller Speed: 47 rpm Reduction ratio: 31,04:1 Frequency: 60 Hz Number of Poles: 4 Propeller Speed: 56 rpm Reduction ratio: 48,30:1 Frequency: 50 Hz Number of Poles: 4 Propeller Speed: 31 rpm Reduction ratio: 48,30:1 Frequency: 60 Hz Number of Poles: 4 Propeller Speed: 37 rpm	1	1
24	82 59 00		Retaining ring SGA 30	1	1

Pos. No	Part. No	Type	Denomination	Qty/Version	
				010	090
25	82 62 12		Retaining ring SGH 62	3	3
26	82 62 30		Retaining ring SGH 105	1	1
27	82 62 32		Retaining ring SGH 110	1	1
29	82 58 95		Retaining ring SGA 24	1	1
			Reduction ratio: 56,64:1 Frequency: 50 Hz Number of Poles: 2 Propeller Speed: 52 rpm		
			Reduction ratio: 40,81:1 Frequency: 50 Hz Number of Poles: 4 Propeller Speed: 36 rpm		
			Reduction ratio: 40,81:1 Frequency: 60 Hz Number of Poles: 4 Propeller Speed: 43 rpm		
			Reduction ratio: 56,64:1 Frequency: 50 Hz Number of Poles: 4 Propeller Speed: 26 rpm		
			Reduction ratio: 56,64:1 Frequency: 60 Hz Number of Poles: 4 Propeller Speed: 32 rpm		
			Reduction ratio: 52,71:1 Frequency: 50 Hz Number of Poles: 2 Propeller Speed: 55 rpm		
			Reduction ratio: 52,71:1 Frequency: 50 Hz Number of Poles: 4 Propeller Speed: 28 rpm		
			Reduction ratio: 52,71:1 Frequency: 60 Hz Number of Poles: 4 Propeller Speed: 34 rpm		
			Reduction ratio: 36,39:1 Frequency: 50 Hz Number of Poles: 4 Propeller Speed: 40 rpm		
			Reduction ratio: 36,39:1 Frequency: 60 Hz Number of Poles: 4 Propeller Speed: 48 rpm		

Pos. No	Part. No	Type	Denomination	Qty/Version	
				010	090
29	82 58 97		Retaining ring SGA 26 Reduction ratio: 44,96:1 Frequency: 50 Hz Number of Poles: 4 Propeller Speed: 33 rpm Reduction ratio: 44,96:1 Frequency: 60 Hz Number of Poles: 4 Propeller Speed: 39 rpm Reduction ratio: 34,80:1 Frequency: 50 Hz Number of Poles: 4 Propeller Speed: 42 rpm Reduction ratio: 34,80:1 Frequency: 60 Hz Number of Poles: 4 Propeller Speed: 50 rpm Reduction ratio: 31,04:1 Frequency: 50 Hz Number of Poles: 4 Propeller Speed: 47 rpm Reduction ratio: 31,04:1 Frequency: 60 Hz Number of Poles: 4 Propeller Speed: 56 rpm Reduction ratio: 48,30:1 Frequency: 50 Hz Number of Poles: 4 Propeller Speed: 31 rpm Reduction ratio: 48,30:1 Frequency: 60 Hz Number of Poles: 4 Propeller Speed: 37 rpm	1	1
31	82 73 90		O-ring 19.2X3 NBR	5	5
33	82 74 79		O-ring 129.5X3 NBR	1	1
35	82 75 00		O-ring 269.3X5.7 NBR	1	1
36	82 74 93		O-ring 199.3X5.7 NBR	1	1
37	82 71 71		O-ring 62X3.0 FPM	1	1
38	83 33 14		Ball bearing 25X62X17	1	1
39	83 36 42		Ball bearing 3212 60X110X36.5	1	1
40	83 34 78		Ball bearing 6406 30X90X23	1	1
41	83 35 72		Roller bearing 22206 CC 30X62X20	3	3
45	82 85 69		Seal ring	2	2
46	82 85 52		Seal ring 70X110X8 NITRIL	1	1
48	439 31 04		Stator housing	1	
48	439 31 07	(Ex)	Stator housing		1
49	310 11 01	(Ex)	Stator 18-11-4a 60 Hz 4-poles 440V-460V YSER 220V-230V Y// P2=4,60kW/ 6,20hp	1	1
49	310 11 69	(Ex)	Stator 18-11-4a 60 Hz 4-poles 380V D P2=4,60kW/6,20hp	1	1
49	310 11 62	(Ex)	Stator 18-11-4a 50 Hz 4-poles 380V-400V Y 220V-230V D P2=4,30kW 60 Hz 4-poles 440V-460V Y 260V D P2=4,60kW/6,20hp	1	1

Pos. No	Part. No	Type	Denomination	Qty/Version		
				010	090	
49	310 11 61	(Ex)	Stator 18-11-4a	50 Hz 4-poles 380V-400V D 660V Y P2=4,30kW 60 Hz 4-poles 400V-460V D P2=4,60kW/6,20hp 50 Hz 4-poles 690V Y 400V D P2=4,30kW	1	1
49	310 11 67	(Ex)	Stator 18-11-4a	50 Hz 4-poles 400V-440V D P2=4,30kW	1	1
49	310 11 63	(Ex)	Stator 18-11-4a	50 Hz 4-poles 500V D P2=4,30kW 60 Hz 4-poles 575V-600V D P2=4,60kW/6,20hp	1	1
49	344 86 62	(Ex)	Stator 18-10-2a	50 Hz 2-poles 380V-400V Y 220V-230V D P2=4,40kW	1	1
49	344 86 61	(Ex)	Stator 18-10-2a	50 Hz 2-poles 400V D P2=4,40kW 50 Hz 2-poles 660V-690V Y 380V-400V D P2=4,40kW	1	1
49	344 86 63	(Ex)	Stator 18-10-2a	50 Hz 2-poles 500V D P2=4,40kW	1	1
50	464 62 06	(Ex)	Shaft unit	Reduction ratio: 56,64:1 Frequency: 50 Hz Number of Poles: 2 Propeller Speed: 52 rpm Reduction ratio: 52,71:1 Frequency: 50 Hz Number of Poles: 2 Propeller Speed: 55 rpm	1	1
50	464 62 08	(Ex)	Shaft unit	Reduction ratio: 40,81:1 Frequency: 50 Hz Number of Poles: 4 Propeller Speed: 36 rpm Reduction ratio: 40,81:1 Frequency: 60 Hz Number of Poles: 4 Propeller Speed: 43 rpm Reduction ratio: 56,64:1 Frequency: 50 Hz Number of Poles: 4 Propeller Speed: 26 rpm Reduction ratio: 56,64:1 Frequency: 60 Hz Number of Poles: 4 Propeller Speed: 32 rpm Reduction ratio: 52,71:1 Frequency: 50 Hz Number of Poles: 4 Propeller Speed: 28 rpm Reduction ratio: 52,71:1 Frequency: 60 Hz Number of Poles: 4 Propeller Speed: 34 rpm Reduction ratio: 36,39:1 Frequency: 50 Hz Number of Poles: 4 Propeller Speed: 40 rpm Reduction ratio: 36,39:1 Frequency: 60 Hz Number of Poles: 4 Propeller Speed: 48 rpm	1	1

4 List of Parts

Pos. No	Part. No	Type	Denomination	Qty/Version		
				010	090	
50	464 62 09	(Ex)	Shaft unit	Reduction ratio: 44,96:1 Frequency: 50 Hz Number of Poles: 4 Propeller Speed: 33 rpm Reduction ratio: 44,96:1 Frequency: 60 Hz Number of Poles: 4 Propeller Speed: 39 rpm Reduction ratio: 34,80:1 Frequency: 50 Hz Number of Poles: 4 Propeller Speed: 42 rpm Reduction ratio: 34,80:1 Frequency: 60 Hz Number of Poles: 4 Propeller Speed: 50 rpm Reduction ratio: 31,04:1 Frequency: 50 Hz Number of Poles: 4 Propeller Speed: 47 rpm Reduction ratio: 31,04:1 Frequency: 60 Hz Number of Poles: 4 Propeller Speed: 56 rpm Reduction ratio: 48,30:1 Frequency: 50 Hz Number of Poles: 4 Propeller Speed: 31 rpm Reduction ratio: 48,30:1 Frequency: 60 Hz Number of Poles: 4 Propeller Speed: 37 rpm	1	1
52	464 54 04		Bearing holder	Bearing holder *** For FD use only *** Water in oil supervision: KOD Sealed stator housing Bearing holder Leakage detector in the stator house: FLS Sealed stator housing Bearing holder Bearing holder Sealed stator housing	1	
52	464 54 05		Bearing holder	Bearing holder Water in oil supervision: CLS Sealed stator housing Bearing holder Leakage detector in the stator house: FLS Water in oil supervision: CLS Sealed stator housing	1	
52	464 54 07	(Ex)	Bearing holder	Bearing holder Bearing holder Sealed stator housing Bearing holder Leakage detector in the stator house :FLS Sealed stator housing		1

Pos. No	Part. No	Type	Denomination	Qty/Version	
				010	090
53	464 46 00		Gear Reduction ratio: 56,64:1 Frequency: 50 Hz Number of Poles: 2 Propeller Speed: 52 rpm Reduction ratio: 40,81:1 Frequency: 50 Hz Number of Poles: 4 Propeller Speed: 36 rpm Reduction ratio: 40,81:1 Frequency: 60 Hz Number of Poles: 4 Propeller Speed: 43 rpm Reduction ratio: 56,64:1 Frequency: 50 Hz Number of Poles: 4 Propeller Speed: 26 rpm Reduction ratio: 56,64:1 Frequency: 60 Hz Number of Poles: 4 Propeller Speed: 32 rpm Reduction ratio: 52,71:1 Frequency: 50 Hz Number of Poles: 2 Propeller Speed: 55 rpm Reduction ratio: 52,71:1 Frequency: 50 Hz Number of Poles: 4 Propeller Speed: 28 rpm Reduction ratio: 52,71:1 Frequency: 60 Hz Number of Poles: 4 Propeller Speed: 34 rpm Reduction ratio: 36,39:1 Frequency: 50 Hz Number of Poles: 4 Propeller Speed: 40 rpm Reduction ratio: 36,39:1 Frequency: 60 Hz Number of Poles: 4 Propeller Speed: 48 rpm	1	1
53	464 46 01		Gear Reduction ratio: 44,96:1 Frequency: 50 Hz Number of Poles: 4 Propeller Speed: 33 rpm Reduction ratio: 44,96:1 Frequency: 60 Hz Number of Poles: 4 Propeller Speed: 39 rpm Reduction ratio: 34,80:1 Frequency: 50 Hz Number of Poles: 4 Propeller Speed: 42 rpm Reduction ratio: 34,80:1 Frequency: 60 Hz Number of Poles: 4 Propeller Speed: 50 rpm Reduction ratio: 31,04:1 Frequency: 50 Hz Number of Poles: 4 Propeller Speed: 47 rpm Reduction ratio: 31,04:1 Frequency: 60 Hz Number of Poles: 4 Propeller Speed: 56 rpm Reduction ratio: 48,30:1 Frequency: 50 Hz Number of Poles: 4 Propeller Speed: 31 rpm Reduction ratio: 48,30:1 Frequency: 60 Hz Number of Poles: 4 Propeller Speed: 37 rpm	1	1

Pos. No	Part. No	Type	Denomination	Qty/Version	
				010	090
54	464 48 00		Shaft Reduction ratio: 44,96:1 Frequency: 50 Hz Number of Poles: 4 Propeller Speed: 33 rpm Reduction ratio: 44,96:1 Frequency: 60 Hz Number of Poles: 4 Propeller Speed: 39 rpm Reduction ratio: 52,71:1 Frequency: 50 Hz Number of Poles: 2 Propeller Speed: 55 rpm Reduction ratio: 52,71:1 Frequency: 50 Hz Number of Poles: 4 Propeller Speed: 28 rpm Reduction ratio: 52,71:1 Frequency: 60 Hz Number of Poles: 4 Propeller Speed: 34 rpm	1	1
54	464 48 03		Shaft Reduction ratio: 56,64:1 Frequency: 50 Hz Number of Poles: 2 Propeller Speed: 52 rpm Reduction ratio: 56,64:1 Frequency: 50 Hz Number of Poles: 4 Propeller Speed: 26 rpm Reduction ratio: 56,64:1 Frequency: 60 Hz Number of Poles: 4 Propeller Speed: 32 rpm Reduction ratio: 48,30:1 Frequency: 50 Hz Number of Poles: 4 Propeller Speed: 31 rpm Reduction ratio: 48,30:1 Frequency: 60 Hz Number of Poles: 4 Propeller Speed: 37 rpm	1	1
54	464 48 01		Shaft Reduction ratio: 31,04:1 Frequency: 50 Hz Number of Poles: 4 Propeller Speed: 47 rpm Reduction ratio: 31,04:1 Frequency: 60 Hz Number of Poles: 4 Propeller Speed: 56 rpm Reduction ratio: 36,39:1 Frequency: 50 Hz Number of Poles: 4 Propeller Speed: 40 rpm Reduction ratio: 36,39:1 Frequency: 60 Hz Number of Poles: 4 Propeller Speed: 48 rpm	1	1
54	464 48 02		Shaft Reduction ratio: 34,80:1 Frequency: 50 Hz Number of Poles: 4 Propeller Speed: 42 rpm Reduction ratio: 34,80:1 Frequency: 60 Hz Number of Poles: 4 Propeller Speed: 50 rpm Reduction ratio: 40,81:1 Frequency: 50 Hz Number of Poles: 4 Propeller Speed: 36 rpm Reduction ratio: 40,81:1 Frequency: 60 Hz Number of Poles: 4 Propeller Speed: 43 rpm	1	1

Pos. No	Part. No	Type	Denomination	Qty/Version	
				010	090
55	464 49 00		Gear Reduction ratio: 44,96:1 Frequency: 50 Hz Number of Poles: 4 Propeller Speed: 33 rpm Reduction ratio: 44,96:1 Frequency: 60 Hz Number of Poles: 4 Propeller Speed: 39 rpm Reduction ratio: 52,71:1 Frequency: 50 Hz Number of Poles: 2 Propeller Speed: 55 rpm Reduction ratio: 52,71:1 Frequency: 50 Hz Number of Poles: 4 Propeller Speed: 28 rpm Reduction ratio: 52,71:1 Frequency: 60 Hz Number of Poles: 4 Propeller Speed: 34 rpm	1	1
55	464 49 03		Gear Reduction ratio: 56,64:1 Frequency: 50 Hz Number of Poles: 2 Propeller Speed: 52 rpm Reduction ratio: 56,64:1 Frequency: 50 Hz Number of Poles: 4 Propeller Speed: 26 rpm Reduction ratio: 56,64:1 Frequency: 60 Hz Number of Poles: 4 Propeller Speed: 32 rpm Reduction ratio: 48,30:1 Frequency: 50 Hz Number of Poles: 4 Propeller Speed: 31 rpm Reduction ratio: 48,30:1 Frequency: 60 Hz Number of Poles: 4 Propeller Speed: 37 rpm	1	1
55	464 49 01		Gear Reduction ratio: 31,04:1 Frequency: 50 Hz Number of Poles: 4 Propeller Speed: 47 rpm Reduction ratio: 31,04:1 Frequency: 60 Hz Number of Poles: 4 Propeller Speed: 56 rpm Reduction ratio: 36,39:1 Frequency: 50 Hz Number of Poles: 4 Propeller Speed: 40 rpm Reduction ratio: 36,39:1 Frequency: 60 Hz Number of Poles: 4 Propeller Speed: 48 rpm	1	1
55	464 49 02		Gear Reduction ratio: 34,80:1 Frequency: 50 Hz Number of Poles: 4 Propeller Speed: 42 rpm Reduction ratio: 34,80:1 Frequency: 60 Hz Number of Poles: 4 Propeller Speed: 50 rpm Reduction ratio: 40,81:1 Frequency: 50 Hz Number of Poles: 4 Propeller Speed: 36 rpm Reduction ratio: 40,81:1 Frequency: 60 Hz Number of Poles: 4 Propeller Speed: 43 rpm	1	1
56	464 51 05	(Ex)	Gear housing	1	1

4 List of Parts

Pos. No	Part. No	Type	Denomination	Qty/Version	
				010	090
57	416 94 00		Inspection screw	1	1
58	428 22 17		Inspection screw BRASS	3	4
58	428 22 17		Inspection screw BRASS	1	
60	464 61 00		Ring	1	1
61	775 80 00		Supporting washer	1	1
62	464 50 00		Shaft	1	1
63	493 97 00		Ring	1	1
64	456 71 00		Compression spring	12	12
65	464 59 00		Washer 63X104X1.5	1	1
66	496 04 00		Oil housing	1	1
67	382 83 00		Wear protection NBR-A2	1	1
68	384 03 10		Mechanical seal WCCR/WCCR FPM	1	1
75	549 09 00		Propeller blade OD: 2500mm	2	2
75	549 09 01		Propeller blade OD: 2200mm	2	2
75	549 09 02		Propeller blade OD: 2000mm	2	2
75	549 09 03		Propeller blade OD: 1800mm	2	2
75	549 09 04		Propeller blade OD: 1700mm	2	2
75	549 09 05		Propeller blade OD: 1600mm	2	2
75	549 09 06		Propeller blade OD: 1500mm	2	2
75	549 09 11		Propeller blade OD: 1400mm	2	2
79	777 90 11		Propeller hub Coating: Thickness = min 120 micrometer Std M0700.00.0004	1	1
79	777 90 12		Propeller hub Coating: Spec Thickness = 360 - 450 micrometer M0700.00.0008	1	1
79	777 90 13		Propeller hub Coating: MBBR Thickness = 450 - 550 micrometer M0700.00.0011	1	1
79	777 90 10		Propeller hub Coating: Primer M0700.00.0002	1	1
80	83 42 65		Terminal block 600V/20A UL Power cable x 1 SUBCAB 4G2,5+2x1,5 17 - 18mm L= 10m Max 750V With cable handling kit Power cable x 1 SUBCAB 4G2,5+2x1,5 17 - 18mm L= 20m Max 750V With cable handling kit Power cable x 1 SUBCAB 7G2,5+2x1,5 20 - 22mm L= 10m Max 750V With cable handling kit Power cable x 1 SUBCAB 7G2,5+2x1,5 20 - 22mm L= 20m Max 750V With cable handling kit Power cable x 1 SUBCAB 4G4+2x1,5 20 - 22mm L= 16m Max 750V With cable handling kit	2	2
80	83 42 67		Terminal block 600V/20A UL Power cable x 1 SUBCAB 4G2,5+2x1,5 17 - 18mm L= 10m Max 750V With cable handling kit Power cable x 1 SUBCAB 4G2,5+2x1,5 17 - 18mm L= 20m Max 750V With cable handling kit	3	3

Pos. No	Part. No	Type	Denomination	Qty/Version		
				010	090	
80	83 42 65		Terminal block 600V/20A UL	Power cable x 1 SUBCAB 4G2,5+2x1,5 17 - 18mm L= 10m Max 750V With cable handling kit Power cable x 1 SUBCAB 4G2,5+2x1,5 17 - 18mm L= 20m Max 750V With cable handling kit Power cable x 1 SUBCAB 7G2,5+2x1,5 20 - 22mm L= 10m Max 750V With cable handling kit Power cable x 1 SUBCAB 7G2,5+2x1,5 20 - 22mm L= 20m Max 750V With cable handling kit Power cable x 1 SUBCAB 4G4+2x1,5 20 - 22mm L= 16m Max 750V With cable handling kit	8	8
80	85 08 73		Terminal block	Power cable x 1 SUBCAB 4G4+2x1,5 20 - 22mm L= 16m Max 750V With cable handling kit	3	3
81	83 45 59		Cable tie 200X2.4 PA 6/6 -55+105		2	2
82	83 43 58		Cable lug UL/CSA 1.04-2.62 MM2 M6	Power cable x 1 SUBCAB 4G2,5+2x1,5 17 - 18mm L= 10m Max 750V With cable handling kit Power cable x 1 SUBCAB 4G2,5+2x1,5 17 - 18mm L= 20m Max 750V With cable handling kit Power cable x 1 SUBCAB 7G2,5+2x1,5 20 - 22mm L= 10m Max 750V With cable handling kit Power cable x 1 SUBCAB 7G2,5+2x1,5 20 - 22mm L= 20m Max 750V With cable handling kit	1	1
82	85 10 24		Cable lug	Power cable x 1 SUBCAB 4G4+2x1,5 20 - 22mm L= 16m Max 750V With cable handling kit	1	1
83	83 44 24		Closed-end splice 3-6 (AWG 12-10)		3	3
83	83 44 24		Closed-end splice 3-6 (AWG 12-10)		1	
84	83 44 23		Closed-end splice 4.0-9.0 (AWG 8)	Stator 3-phase 60 Hz 4-poles 440V-460V YSER 220V-230V Y// P2=4,60kW/6,20hp Max ambient temperature 40 DC Thermal contact 125 DC	1	1
84	83 44 24		Closed-end splice 3-6 (AWG 12-10)	Power cable x 1 SUBCAB 4G4+2x1,5 20 - 22mm L= 16m Max 750V With cable handling kit	2	2
92	734 59 00		El.lead through unit 12X + 6X		1	1
94	443 50 00		Entrance cover	Cable entry: (20) - 22mm	1	
94	443 51 00		Entrance cover	Cable entry: (17) - 18mm	1	
94	443 50 03	(Ex)	Entrance cover	Cable entry: (20) - 22mm Cable entry: (17) - 20mm		1
95	642 17 00		Entrance flange (20)-32 MM	Cable entry: (20) - 22mm	1	

Pos. No	Part. No	Type	Denomination	Qty/Version		
				010	090	
95	397 81 00	(Ex)	Gland screw Pr 37	Cable entry: (17) - 18mm	1	
95	642 17 01	(Ex)	Entrance flange (14)-32 MM	Cable entry: (20) - 22mm Cable entry: (17) - 20mm		1
96	82 40 82		Plain washer 34.5X52X2-A2-70	Cable entry: (20) - 22mm	4	4
96	82 42 42		Plain washer 24.5X35X2-A4-70	Cable entry: (17) - 18mm	1	
96	82 40 81		Plain washer 32.5X52X2-A2-70	Cable entry: (20) - 22mm Cable entry: (17) - 20mm		4
97	84 18 02		Seal sleeve (20)-23 MM NBR	Cable entry: (20) - 22mm	2	2
97	84 17 93		Seal sleeve (16)-18 MM NBR	Cable entry: (17) - 18mm	1	
97	84 18 01		Seal sleeve (17)-20 MM NBR	Cable entry: (17) - 20mm	2	2
100	83 03 48		Hex.socket hd screw M12X40-A4-70	Cable entry: (20) - 22mm	2	
100	82 00 69		Hex.socket hd screw M12X30-A2-70	Cable entry: (20) - 22mm		2
101	678 58 18	(Ex)	Cable clip 16-(18) MM		1	
102	94 20 59		Motor cable subcab 4G2.5+2X1.5	Power cable x 1 SUBCAB 4G2,5+2x1,5 17 - 18mm L= 10m Max 750V With cable handling kit Power cable x 1 SUBCAB 4G2,5+2x1,5 17 - 18mm L= 20m Max 750V With cable handling kit	*	*
102	94 20 82		Motor cable subcab 7G2.5+2X1.5	Power cable x 1 SUBCAB 7G2,5+2x1,5 20 - 22mm L= 10m Max 750V With cable handling kit Power cable x 1 SUBCAB 7G2,5+2x1,5 20 - 22mm L= 20m Max 750V With cable handling kit	*	*
102	94 20 60		Motor cable subcab 4G4+2X1.5	Power cable x 1 SUBCAB 4G4+2x1,5 20 - 22mm L= 16m Max 750V With cable handling kit	*	*
103	83 45 59		Cable tie 200X2.4 PA 6/6 -55+105		1	1
105	630 68 00	(Ex)	Data plate USE 6306801 AS SPARE PART		2	3
105	775 03 00		Connection plate		1	1
105	630 69 00	(Ex)	Certificate plate EN			2
106	83 02 58		Hex.socket hd screw M5X12-A4-70			2
107	279 29 00	(Ex)	Earthing plate			1
108	838 12 00		Bending protection	Power cable x 1 SUBCAB 4G2,5+2x1,5 17 - 18mm L= 10m Max 750V With cable handling kit Power cable x 1 SUBCAB 4G2,5+2x1,5 17 - 18mm L= 20m Max 750V With cable handling kit	1	1

Pos. No	Part. No	Type	Denomination	Qty/Version		
				010	090	
108	838 12 02		Bending protection	Power cable x 1 SUBCAB 7G2,5+2x1,5 20 - 22mm L= 10m Max 750V With cable handling kit Power cable x 1 SUBCAB 7G2,5+2x1,5 20 - 22mm L= 20m Max 750V With cable handling kit Power cable x 1 SUBCAB 4G4+2x1,5 20 - 22mm L= 16m Max 750V With cable handling kit	1	1
109	846 46 00		Bracket	1	1	
110	846 65 00		Bracket	1	1	
111	83 04 45		Hex.socket hd screw M8X35- A4-80	2	2	
112	504 78 05		Cable unit	1		
112,1	83 42 42		Contact pin	2		
112,2	83 53 40		Terminal device	1		
112,3	94 14 20		Single conductor	*		
112,4	94 14 31		Single conductor	*		
113	505 12 00		Leakage sensor (CLS30)	1		
114	671 31 00		Leakage sensor	1	1	
114,1	679 03 00		Holder	1	1	
114,2	518 89 02		Leakage sensor (FLS)	1	1	
115	504 78 09		Cable unit (FLS)	1	1	
116	81 41 52		Hexagon head screw M12X20- A2-70	1	1	
116	81 41 52		Hexagon head screw M12X20- A2-70	2		
117	83 97 48		Leakage sensor unit	1		
118	82 27 27		Lock nut M8-A4-70	2	2	
120	84 66 55		Cable clamp RUBBER SEALING STRIP 15MM	1		
120	85 09 83		Cable holder	1	1	
120	84 60 64		Cable clamp RUBBER SEALING STRIP 17MM	1	1	

Pos. No	Part. No	Type	Denomination	Qty/Version		
				010	090	
120	84 60 65		Cable clamp RUBBER SEALING STRIP 19MM	Parts for Registration module Order on part numbers	1	
120	84 64 36		Cable clamp RUBBER SEALING STRIP 21MM	Parts for Registration module Order on part numbers	1	1
120	84 64 38		Cable clamp	Parts for Registration module Order on part numbers	1	
120	84 64 51		Cable clamp	Parts for Registration module Order on part numbers	1	
120	84 64 58		Cable clamp	Parts for Registration module Order on part numbers	1	
120	84 64 59		Cable clamp	Parts for Registration module Order on part numbers	1	
122	82 27 26		Lock nut M6-A4-70		1	1
138	83 03 76		Hex.socket hd screw M16X70-A4-70		8	8
139	82 50 19		Lock washer M16		8	8
141	481 95 09		Stand unit		1	
141	481 95 10		Stand unit	Stand Installation Guided Guide bar dimension: 100 x 100mm Material: stainless steel (ASTM 316L) Four fixed sleeves		1
142	842 76 00		Lifting handle		1	1
144	82 69 41		Protective plug F11		1	1
144	82 70 92		Protective plug		2	2
144	84 35 20		Protective plug		2	2
166	482 04 02		Support	Stand Installation Double guide bars Guide bar dimension: OD 114,3mm Material: stainless steel (ASTM 304) Stand Installation Guided Guide bar dimension: 100 x 100mm Material: stainless steel (ASTM 316L) Four fixed sleeves Stand Installation Double guide bars Guide bar dimension: OD 114,3mm Material: stainless steel (ASTM 316L)	1	1
166	482 04 02		Support	Stand Installation Double guide bars Guide bar dimension: OD 114,3mm Material: stainless steel (ASTM 304) Stand Installation Guided Guide bar dimension: 100 x 100mm Material: stainless steel (ASTM 316L) Four fixed sleeves Stand Installation Double guide bars Guide bar dimension: OD 114,3mm Material: stainless steel (ASTM 316L)	2	2
172	82 26 49		Shackle		2	2
174	82 27 30		Lock nut M16-A4-70		8	8
175	509 53 05		Stand unit		1	1

Pos. No	Part. No	Type	Denomination	Qty/Version	
				010	090
175,2	82 23 35		Hexagon nut M12-A4-70	4	4
175,3	82 35 71		Plain washer 4.3X9X0.8-A4-170HV	12	12
175,4	82 50 17		Lock washer M12	8	8
175,6	83 03 47		Hex.socket hd screw M12X35-A4-70	4	4
175,7	84 24 58		Blind rivet	12	12
175,9	509 45 00		Claw	2	2
175,10	547 84 01		Lifting handle	1	1
175,11	504 56 03		Stand	1	1
175	509 53 06		Stand unit	1	1
175,2	82 23 35		Hexagon nut M12-A4-70	4	4
175,3	82 35 71		Plain washer 4.3X9X0.8-A4-170HV	12	12
175,4	82 50 17		Lock washer M12	8	8
175,6	83 03 47		Hex.socket hd screw M12X35-A4-70	4	4
175,7	84 24 58		Blind rivet	12	12
175,9	509 45 00		Claw	2	2
175,10	547 84 02		Lifting handle	1	1
176	753 29 00		Mounting kit PROPELLER	1	1
176,1	80 46 27		Parallel key 14H9X9H11X70	2	2
176,2	791 13 00		Damper	2	2
176,3	83 03 76		Hex.socket hd screw M16X70-A4-70	1	1
176,4	384 61 00		Supporting washer	1	1
176,5	82 77 96		O-ring 57.5X3 NBR	1	1
176,7	81 49 32		Hexagon head screw M16X45-A4-70	2	2
176,8	82 50 19		Lock washer M16	2	2
176,9	494 78 01		Supporting washer	2	2
176,10	82 74 66		O-ring 64.5X3 NBR	2	2
177	851 77 00	(Ex)	Distance block	2	2
177	851 77 00	(Ex)	Distance block	4	4
179	83 03 76		Hex.socket hd screw M16X70-A4-70	8	8
181	82 50 17		Lock washer M12	1	2
181	82 50 17		Lock washer M12	2	
222	679 03 00		Holder	2	
223	82 74 63		O-ring 49.5X3 NBR	1	1
224	597 98 02	(Ex)	Sleeve	1	1
250	726 11 00		Fastening kit	1	1
400	667 40 00		Sticker	2	2
800	82 97 17		O-ring kits	1	1
801	466 26 14		Zinc anode kit	1	1
			Parts for Registration module Order on part numbers		

Pos. No	Part. No	Type	Denomination	Qty/Version		
				010	090	
801	466 26 15		Zinc anode kit	Parts for Registration module Order on part numbers	1	1
810	584 92 00		Rebuilding kit DIAM.2.5	Parts for Aftermarket	1	1
810	584 92 01		Rebuilding kit DIAM.2.2	Parts for Aftermarket	1	1
810	584 92 02		Rebuilding kit DIAM.2	Parts for Aftermarket	1	1
810	584 92 03		Rebuilding kit DIAM.1.8	Parts for Aftermarket	1	1
810	584 92 04		Rebuilding kit DIAM.1.7	Parts for Aftermarket	1	1
810	584 92 05		Rebuilding kit DIAM.1.6	Parts for Aftermarket	1	1
810	584 92 06		Rebuilding kit DIAM.1.5	Parts for Aftermarket	1	1
810	584 92 07		Rebuilding kit DIAM.1.4	Parts for Aftermarket	1	1
810	584 92 10		Rebuilding kit DIAM.2.5	Parts for Aftermarket	1	1
810	584 92 11		Rebuilding kit DIAM.2.2	Parts for Aftermarket	1	1
810	584 92 12		Rebuilding kit DIAM.2	Parts for Aftermarket	1	1
810	584 92 13		Rebuilding kit DIAM.1.8	Parts for Aftermarket	1	1
810	584 92 14		Rebuilding kit DIAM.1.7	Parts for Aftermarket	1	1
810	584 92 15		Rebuilding kit DIAM.1.6	Parts for Aftermarket	1	1
810	584 92 16		Rebuilding kit DIAM.1.5	Parts for Aftermarket	1	1
810	584 92 17		Rebuilding kit DIAM.1.4	Parts for Aftermarket	1	1
810	584 92 20		Rebuilding kit DIAM.2.5	Parts for Aftermarket	1	1
810	584 92 21		Rebuilding kit DIAM.2.2	Parts for Aftermarket	1	1
810	584 92 22		Rebuilding kit DIAM.2	Parts for Aftermarket	1	1
810	584 92 23		Rebuilding kit DIAM.1.8	Parts for Aftermarket	1	1
810	584 92 24		Rebuilding kit DIAM.1.7	Parts for Aftermarket	1	1
810	584 92 25		Rebuilding kit DIAM.1.6	Parts for Aftermarket	1	1
810	584 92 26		Rebuilding kit DIAM.1.5	Parts for Aftermarket	1	1
810	584 92 27		Rebuilding kit DIAM.1.4	Parts for Aftermarket	1	1
813	823 26 04		Handling kit	Power cable x 1 SUBCAB 4G2,5+2x1,5 17 - 18mm L= 10m Max 750V With cable handling kit Power cable x 1 SUBCAB 7G2,5+2x1,5 20 - 22mm L= 10m Max 750V With cable handling kit	1	1
813	823 26 05		Handling kit	Power cable x 1 SUBCAB 4G2,5+2x1,5 17 - 18mm L= 20m Max 750V With cable handling kit Power cable x 1 SUBCAB 7G2,5+2x1,5 20 - 22mm L= 20m Max 750V With cable handling kit	1	1
813	823 26 06		Handling kit	Power cable x 1 SUBCAB 4G4+2x1,5 20 - 22mm L= 16m Max 750V With cable handling kit	1	1
900	726 39 00		Basic repair kit		1	1
901	90 17 52		Oil ISO VG 32		*	*
901	90 17 58		Oil GEAR UNITS		5	5
912	82 73 90		O-ring 19.2X3 NBR		5	5
915	659 35 00		Mounting kit MBBR		1	1

Pos. No	Part. No	Type	Denomination	Qty/Version		
				010	090	
959	82 97 67		Cap 17X25 MM PVC	Power cable x 1 SUBCAB 4G2,5+2x1,5 17 - 18mm L= 10m Max 750V With cable handling kit	1	1
959	82 97 70		Cap 20X36 MM PVC	Power cable x 1 SUBCAB 4G2,5+2x1,5 17 - 18mm L= 20m Max 750V With cable handling kit	1	1
				Power cable x 1 SUBCAB 7G2,5+2x1,5 20 - 22mm L= 10m Max 750V With cable handling kit		
				Power cable x 1 SUBCAB 7G2,5+2x1,5 20 - 22mm L= 20m Max 750V With cable handling kit		
				Power cable x 1 SUBCAB 4G4+2x1,5 20 - 22mm L= 16m Max 750V With cable handling kit		

Xylem |'zīləm|

- 1) The tissue in plants that brings water upward from the roots;
- 2) a leading global water technology company.

We're a global team unified in a common purpose: creating advanced technology solutions to the world's water challenges. Developing new technologies that will improve the way water is used, conserved, and re-used in the future is central to our work. Our products and services move, treat, analyze, monitor and return water to the environment, in public utility, industrial, residential and commercial building services settings. Xylem also provides a leading portfolio of smart metering, network technologies and advanced analytics solutions for water, electric and gas utilities. In more than 150 countries, we have strong, long-standing relationships with customers who know us for our powerful combination of leading product brands and applications expertise with a strong focus on developing comprehensive, sustainable solutions.

For more information on how Xylem can help you, go to www.xylem.com



Xylem Water Solutions Global
Services AB 556782-9253
361 80 Emmaboda
Sweden
Tel: +46-471-24 70 00
Fax: +46-471-24 74 01
<http://tpi.xylem.com>
[www.xylemwatersolutions.com/
contacts/](http://www.xylemwatersolutions.com/contacts/)

Visit our Web site for the latest version of this document and more information

The original instruction is in English. All non-English instructions are translations of the original instruction.

© 2012 Xylem Inc