



Flygt 4410.011/.090

Table of Contents

1	Introduction.....	2
1.1	Specially approved products.....	2
2	Product Description.....	3
2.1	The data plate.....	3
2.2	Approvals.....	3
2.3	Product denomination.....	5
3	Exploded View.....	6
3.1	Drive unit.....	6
3.2	Hydraulic unit.....	7
3.3	Installation components.....	8
4	List of Parts.....	11
4.1	4410.011/090.....	11

1 Introduction

Purpose of this manual

The purpose of this manual is to provide necessary information on spare parts and accessories order.

Disclaimer

Always use genuine Flygt parts. The use of other spare parts or accessories can invalidate any claims for warranty or compensation. Xylem does not take any responsibility for damages that are caused by the use of non-original parts. For more information, contact your local sales and service representative.

Data for ordering spare parts

The following information is needed for spare part orders:

- Serial number of the product
- Part number
- Quantity of bulk material, see * in tables

1.1 Specially approved products

Qualification of personnel

Only Xylem or Xylem-authorized service personnel may undertake repair work on specially approved products.

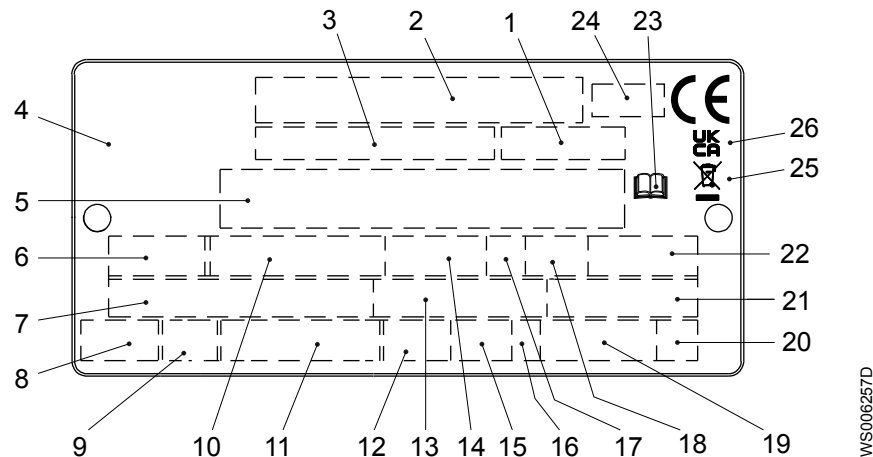
Dimensional accuracy inspection

Spare parts marked with (Ex) after the part number are subject to dimensional accuracy inspection when used in specially approved products.

2 Product Description

2.1 The data plate

The data plate is a metal label that is located on the main body of the products. The data plate lists key product specifications. Specially approved products also have an approval plate.



1. Curve code or Propeller code
2. Serial number
3. Product number
4. Country of origin
5. Additional information
6. Phase; type of current; frequency
7. Rated voltage
8. Thermal protection
9. Thermal class
10. Rated shaft power
11. International standard
12. Degree of protection
13. Rated current
14. Rated speed
15. Maximum submergence
16. Direction of rotation: L=left, R=right
17. Duty class
18. Duty factor
19. Product weight
20. Locked rotor code letter
21. Power factor
22. Maximum ambient temperature
23. Read installation manual
24. Notified body, only for EN-approved Ex products
25. WEEE-Directive symbol
26. UKCA marking

Figure 1: The data plate

2.2 Approvals

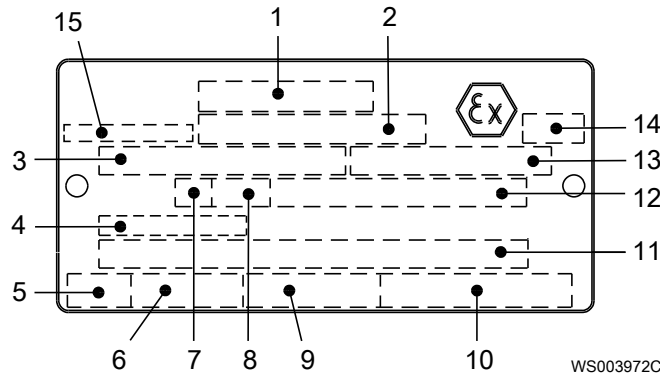
Product approvals for hazardous locations

Product	Approval
4410.090	European Norm (EN) <ul style="list-style-type: none"> • ATEX Directive • EN IEC 60079-0:2018, EN 60079-1:2014, EN ISO 80079-36:2016, EN ISO 80079-37:2016 • Ex II 2 G Ex db h IIB T4 Gb

Product	Approval
	IEC <ul style="list-style-type: none"> • IECEx scheme • IEC 60079-0:2017, IEC 60079-1:2014-06, ISO 80079-36:2016, ISO 80079-37:2016 • Ex db h IIB T4 Gb

EN approval plate

This illustration describes the EN approval plate and the information that is contained in its fields.



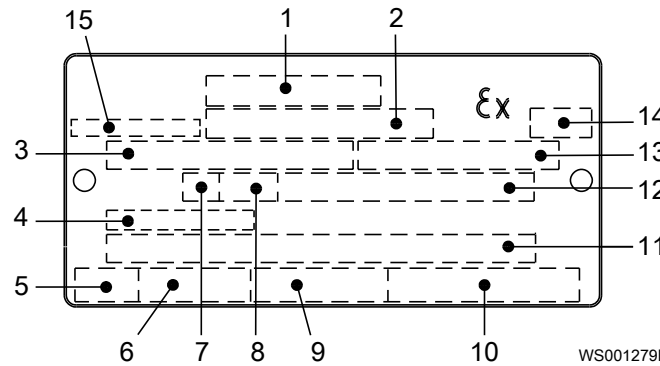
1. Approval
2. Approval authority and Approval number
3. Approved drive unit
4. Cable entry temperature
5. Stall time
6. Starting current or Rated current
7. Duty class
8. Duty factor
9. Input power
10. Rated speed
11. Additional information
12. Maximum ambient temperature
13. Serial number
14. ATEX marking
15. Country of origin

WS003972C

IEC approval plate

This illustration describes the IEC approval plate and the information that is contained in its fields.

International Norm; not for EU member countries.

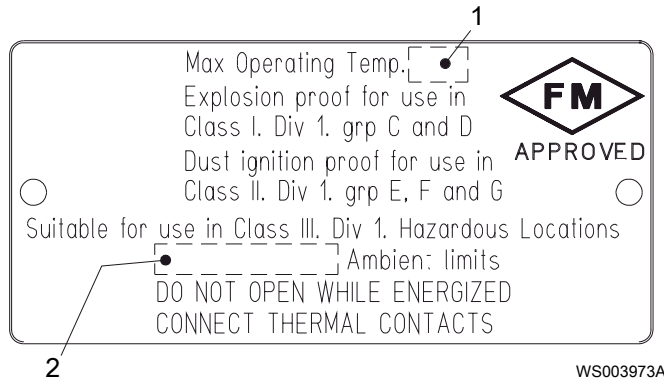


1. Approval
2. Approval authority and Approval number
3. Approved drive unit
4. Cable entry temperature
5. Stall time
6. Starting current or Rated current
7. Duty class
8. Duty factor
9. Input power
10. Rated speed
11. Additional information
12. Maximum ambient temperature
13. Serial number
14. ATEX marking
15. Country of origin

WS001279D

FM approval plate

This illustration describes the FM approval plate and the information that is contained in its fields.



- 1. Temperature class
- 2. Maximum ambient temperature

2.3 Product denomination

Reading instruction

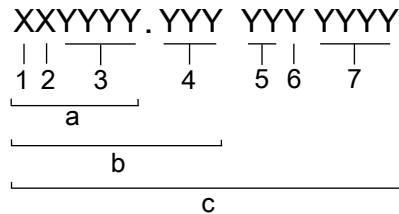
In this section, code characters are illustrated accordingly:

X = letter

Y = digit

The different types of codes are marked up with a, b and c. Code parameters are marked up with numbers.

Codes and parameters

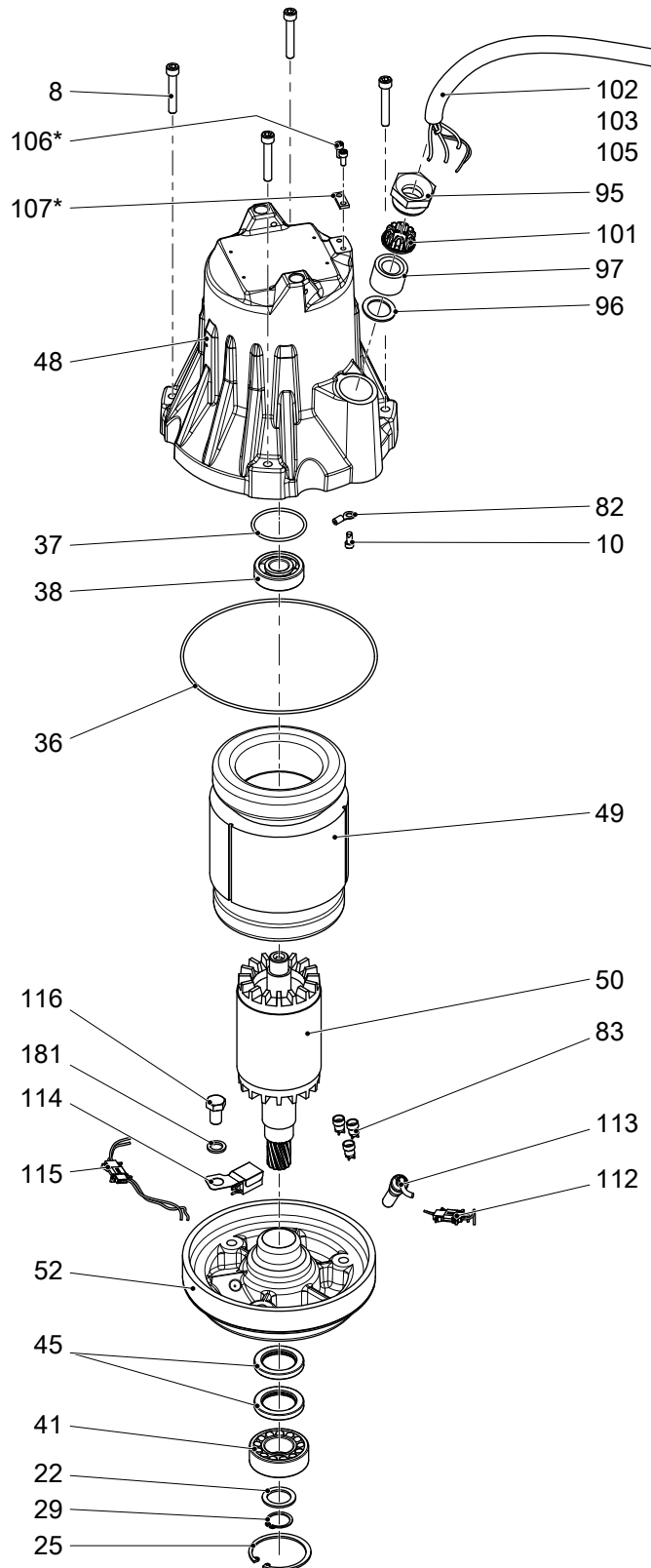


Type of Callout	Number	Indication
Type of code	a	Sales denomination
	b	Product code
	c	Serial number
Parameter	1	Hydraulic end
	2	Type of installation
	3	Sales code
	4	Version
	5	Production year
	6	Production cycle
	7	Running number

3 Exploded View

3.1 Drive unit

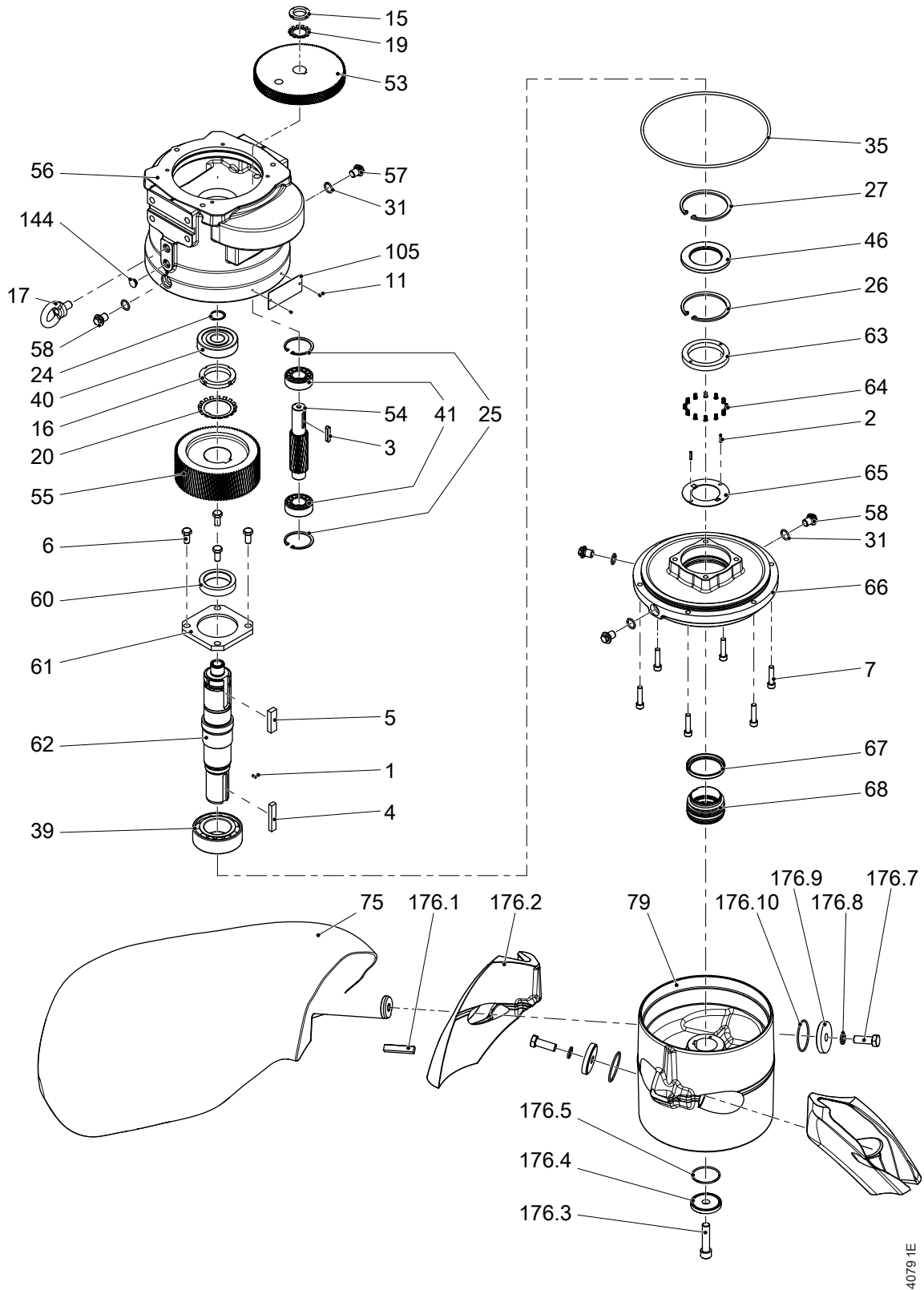
4410



*Ex

40918C

3.2 Hydraulic unit



4079 1E

3.3 Installation components

4410 /4430 /4460/4530

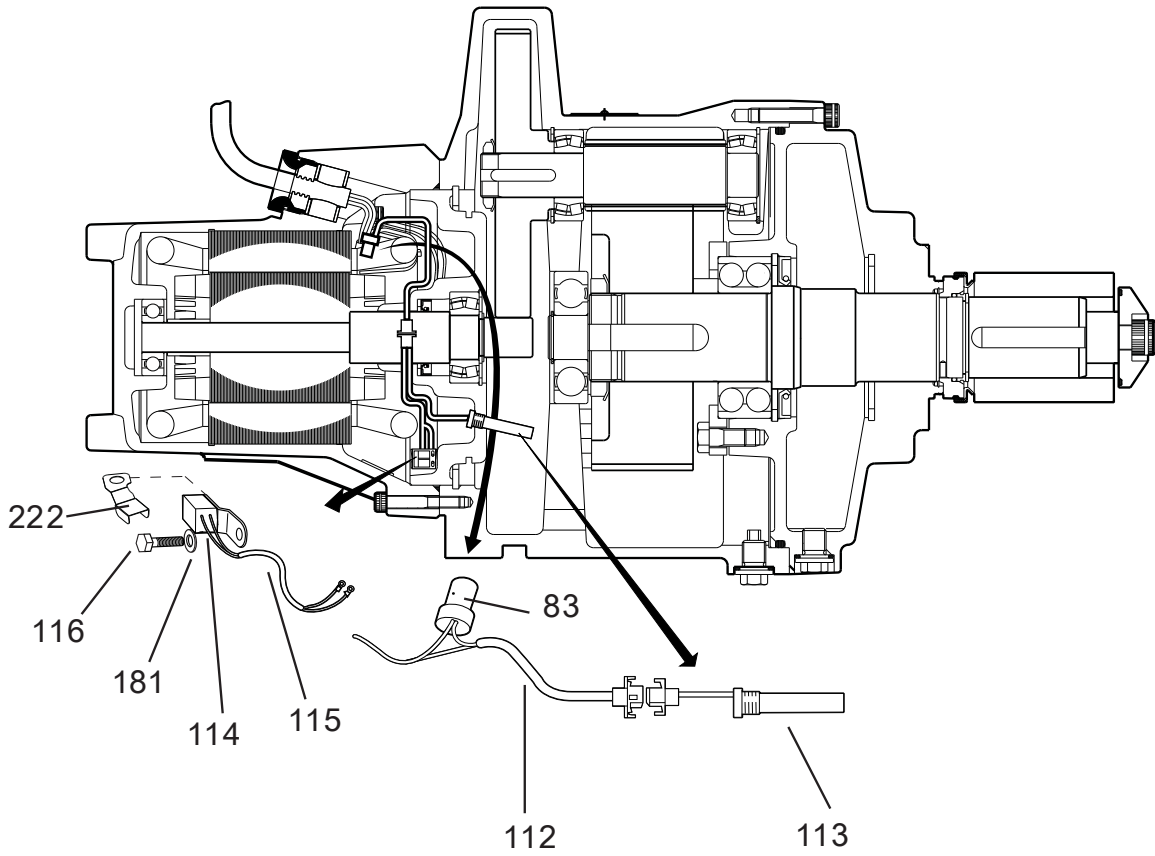


Figure 2: Leakage sensors

40822E

4410 /4430 /4460

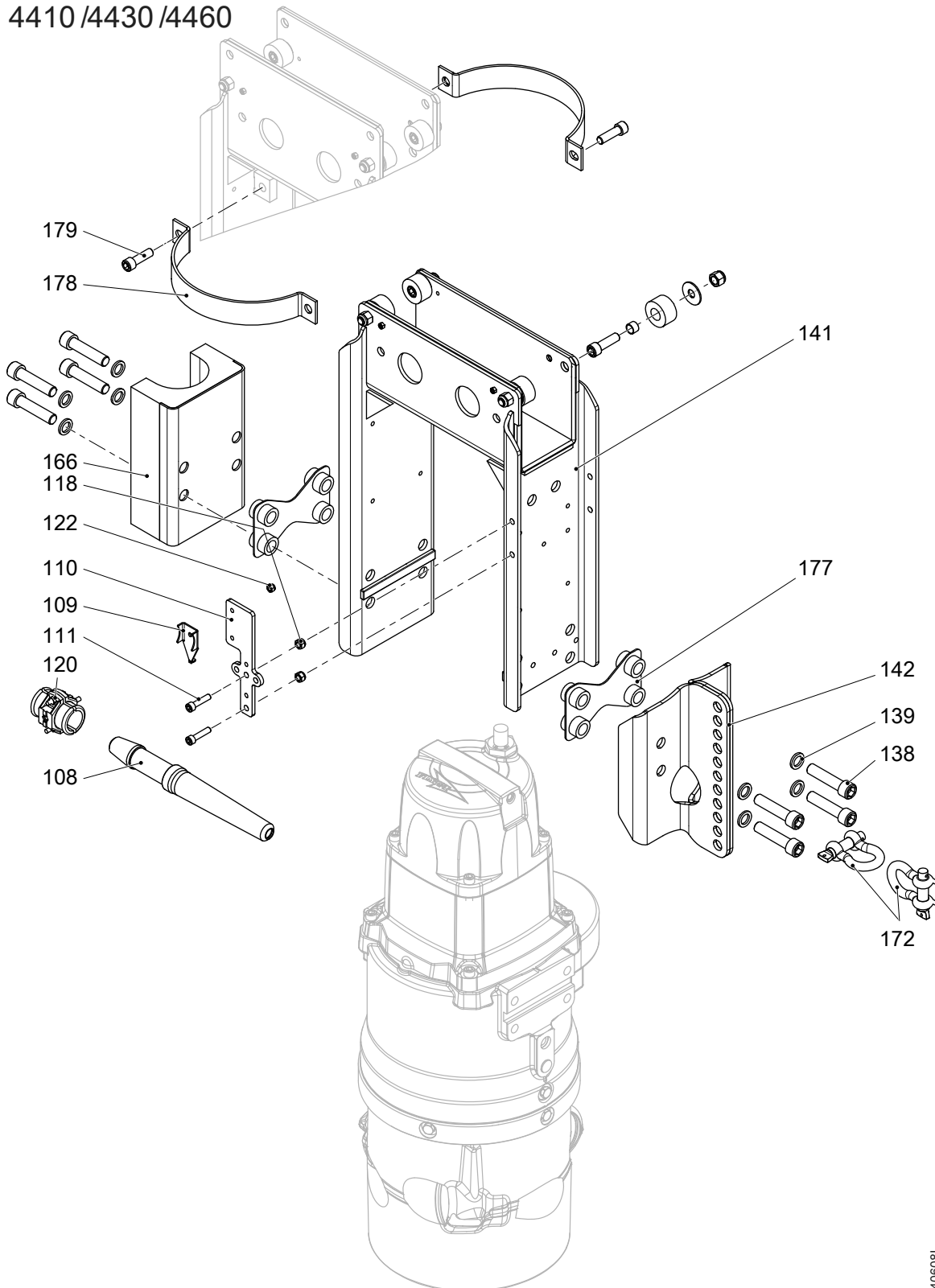


Figure 3: Tripod guide bar

4 List of Parts

4.1 4410.011/090

Pos. No	Part. No	Type	Denomination	Qty/Version	
				011	090
1	80 23 05		Parallel pin CP-H8-4X10-1650	1	1
2	80 57 71		Tension pin	2	2
3	80 70 62		Parallel key 8H9X7H11X40	1	1
4	80 46 27		Parallel key 14H9X9H11X70	1	1
5	80 46 31		Parallel key 18H9X11H11X56	1	1
6	81 41 54		Hexagon head screw M12X25-A2-70	4	4
7	83 03 27		Hex.socket hd screw M10X45-A4-70	6	6
8	83 03 06		Hex.socket hd screw M8X50-A4-70	4	4
10	82 17 61		Cutting screw TAPTITE-M6X12	2	2
11	82 20 88		Drive screw 4X5-A2/A4	6	
15	82 22 31		Round nut M30X1.5	1	1
16	82 22 37		Round nut M60X2	1	1
17	82 31 15		Lifting eye bolt	1	1
19	82 51 31		Lock washer	1	1
20	82 51 37		Lock washer	1	1

Pos. No	Part. No	Type	Denomination	Qty/Version	
				011	090
22	82 44 09		Supporting washer 25X35X2 Reduction ratio: 36,39:1 Frequency: 50 Hz Number of Poles: 4 Propeller Speed: 39 rpm Number of Poles: 6 Propeller Speed: 26 rpm Reduction: 36,39:1 Frequency: 60 Hz Number of Poles: 4 Propeller Speed: 47 rpm Reduction ratio: 56,64:1 Frequency: 50 Hz Number of Poles: 4 Propeller Speed: 26 rpm Number of Poles: 6 Propeller Speed: 17 rpm Reduction ratio: 56,64:1 Frequency: 60 Hz Number of Poles: 4 Propeller Speed: 31 rpm Number of Poles: 6 Propeller Speed: 21 rpm Reduction ratio: 40,81:1 Frequency: 50 Hz Number of Poles: 4 Propeller Speed: 35 rpm Number of Poles: 6 Propeller Speed: 24 rpm Reduction ratio: 40,81:1 Frequency: 60 Hz Number of Poles: 4 Propeller Speed: 42 rpm Reduction ratio: 52,71:1 Frequency: 50 Hz Number of Poles: 4 Propeller Speed: 28 rpm Number of Poles: 6 Propeller Speed: 19 rpm Reduction ratio: 52,71:1 Frequency: 60 Hz Number of Poles: 4 Propeller Speed: 33 rpm Number of Poles: 6 Propeller Speed: 22 rpm	1	1

Pos. No	Part. No	Type	Denomination	Qty/Version	
				011	090
22	82 44 11		Supporting washer 28X40X2 Reduction ratio: 44,96:1 Frequency: 50 Hz Number of Poles: 4 Propeller Speed: 32 rpm Number of Poles: 6 Propeller Speed: 22 rpm Reduction ratio: 44,96:1 Frequency: 60 Hz Number of Poles: 4 Propeller Speed: 39 rpm Number of Poles: 6 Propeller Speed: 26 rpm Reduction ratio: 48,30:1 Frequency: 50 Hz Number of Poles: 4 Propeller Speed: 30 rpm Number of Poles: 6 Propeller Speed: 20 rpm Reduction ratio: 48,30:1 Frequency: 60 Hz Number of Poles: 4 Propeller Speed: 36 rpm Number of Poles: 6 Propeller Speed: 24 rpm Reduction ratio: 31,04:1 Frequency: 50 Hz Number of Poles: 4 Propeller Speed: 46 rpm Reduction ratio: 34,80:1 Frequency: 50 Hz Number of Poles: 4 Propeller Speed: 41 rpm	1	1
24	82 59 00		Retaining ring SGA 30	1	1
25	82 62 12		Retaining ring SGH 62	3	3
26	82 62 30		Retaining ring SGH 105	1	1
27	82 62 32		Retaining ring SGH 110	1	1
28	82 62 51		Retaining ring SGH 200	1	1

4 List of Parts

Pos. No	Part. No	Type	Denomination	Qty/Version	
				011	090
29	82 58 95		Retaining ring SGA 24 Reduction ratio: 36,39:1 Frequency: 50 Hz Number of Poles: 4 Propeller Speed: 39 rpm Number of Poles: 6 Propeller Speed: 26 rpm Reduction: 36,39:1 Frequency: 60 Hz Number of Poles: 4 Propeller Speed: 47 rpm Reduction ratio: 56,64:1 Frequency: 50 Hz Number of Poles: 4 Propeller Speed: 26 rpm Number of Poles: 6 Propeller Speed: 17 rpm Reduction ratio: 56,64:1 Frequency: 60 Hz Number of Poles: 4 Propeller Speed: 31 rpm Number of Poles: 6 Propeller Speed: 21 rpm Reduction ratio: 40,81:1 Frequency: 50 Hz Number of Poles: 4 Propeller Speed: 35 rpm Number of Poles: 6 Propeller Speed: 24 rpm Reduction ratio: 40,81:1 Frequency: 60 Hz Number of Poles: 4 Propeller Speed: 42 rpm Reduction ratio: 52,71:1 Frequency: 50 Hz Number of Poles: 4 Propeller Speed: 28 rpm Number of Poles: 6 Propeller Speed: 19 rpm Reduction ratio: 52,71:1 Frequency: 60 Hz Number of Poles: 4 Propeller Speed: 33 rpm Number of Poles: 6 Propeller Speed: 22 rpm	1	1

Pos. No	Part. No	Type	Denomination	Qty/Version	
				011	090
29	82 58 97		Retaining ring SGA 26 Reduction ratio: 44,96:1 Frequency: 50 Hz Number of Poles: 4 Propeller Speed: 32 rpm Number of Poles: 6 Propeller Speed: 22 rpm Reduction ratio: 44,96:1 Frequency: 60 Hz Number of Poles: 4 Propeller Speed: 39 rpm Number of Poles: 6 Propeller Speed: 26 rpm Reduction ratio: 48,30:1 Frequency: 50 Hz Number of Poles: 4 Propeller Speed: 30 rpm Number of Poles: 6 Propeller Speed: 20 rpm Reduction ratio: 48,30:1 Frequency: 60 Hz Number of Poles: 4 Propeller Speed: 36 rpm Number of Poles: 6 Propeller Speed: 24 rpm Reduction ratio: 31,04:1 Frequency: 50 Hz Number of Poles: 4 Propeller Speed: 46 rpm Reduction ratio: 34,80:1 Frequency: 50 Hz Number of Poles: 4 Propeller Speed: 41 rpm	1	1
31	82 73 90		O-ring 19.2X3 NBR	5	5
35	82 75 00		O-ring 269.3X5.7 NBR	1	1
36	82 78 37		O-ring 200X3-1 NBR	1	1
37	82 79 28		O-ring 52.5X3.0 FPM	1	1
38	83 33 13		Ball bearing 20X52X15 MM	1	1
39	83 36 42		Ball bearing 3212 60X110X36.5	1	1
40	83 34 78		Ball bearing 6406 30X90X23	1	1
41	83 35 72		Roller bearing 22206 CC 30X62X20	3	3
45	82 85 69		Seal ring	2	2
46	82 85 52		Seal ring 70X110X8 NITRIL	1	1
48	556 15 04		Stator housing	1	
48	556 15 07	(Ex)	Stator housing		1
49	408 40 12	(Ex)	Stator 15-10-4a 60 Hz 4-poles 440V-460V YSER 220V-230V Y// P2=2,60kW/ 3,50hp	1	1
49	408 40 68	(Ex)	Stator 15-10-4a 50 Hz 4-poles 190V-200V Y P2=2,30kW 60 Hz 4-poles 200V-220V Y P2=2,60kW/3,50hp	1	1
49	408 40 62	(Ex)	Stator 15-10-4a 50 Hz 4-poles 400V Y 230V D 50 Hz 4-poles 380V Y 220V D P2=2,30kW 60 Hz 4-poles 440V-460V Y 260V D P2=2,60kW/3,50hp	1	1

4 List of Parts

Pos. No	Part. No	Type	Denomination	Qty/Version		
				011	090	
49	408 40 66	(Ex)	Stator 15-10-4a	50 Hz 4-poles 346V-350V Y 200V-208V D P2=2,30kW 60 Hz 4-poles 230V-240V D 400V Y P2=2,60kW/3,50hp	1	1
49	408 40 61	(Ex)	Stator 15-10-4a	50 Hz 4-poles 660V Y 380V D P2=2,30kW 60 Hz 4-poles 440V-460V D P2=2,60kW/3,50hp 50 Hz 4-poles 690V Y 400V D P2=2,30kW	1	1
49	408 40 67	(Ex)	Stator 15-10-4a	50 Hz 4-poles 400V-440V Y P2=2,30kW 60 Hz 4-poles 480V Y P2=2,60kW/3,50hp	1	1
49	408 40 63	(Ex)	Stator 15-10-4a	50 Hz 4-poles 500V-550V Y P2=2,30kW 60 Hz 4-poles 575V-600V Y P2=2,60kW/3,50hp 60 Hz 4-poles 380V D P2=2,60kW/3,50hp	1	1
49	539 95 25		Stator 15-10-6g	60 Hz 6-poles 200V-220V Y P2=1,10kW/1,50hp	1	1
49	539 95 03	(Ex)	Stator 15-10-6g	50 Hz 6-poles 380V Y 220V D P2=0,90kW 60 Hz 6-poles 440V-460V Y 260V D P2=1,10kW/1,50hp	1	1
49	539 95 01	(Ex)	Stator 15-10-6g	50 Hz 6-poles 660V-690V Y 380V-400V D P2=0,90kW 60 Hz 6-poles 440V-460V D P2=1,10kW/1,50hp	1	1
49	539 95 39	(Ex)	Stator 15-10-6g	50 Hz 6-poles 400V Y 230V D P2=0,90kW	1	1
49	539 95 05	(Ex)	Stator 15-10-6g	50 Hz 6-poles 415V-440V Y P2=0,90kW 60 Hz 6-poles 480V Y P2=1,10kW/1,50hp	1	1
49	539 95 06		Stator 15-10-6g	50 Hz 6-poles 500V-550V Y P2=0,90kW 60 Hz 6-poles 575V-600V Y P2=1,10kW/1,50hp	1	1

Pos. No	Part. No	Type	Denomination	Qty/Version	
				011	090
50	464 62 02	(Ex)	Shaft unit	1	1

Pos. No	Part. No	Type	Denomination	Qty/Version		
				011	090	
50	464 62 03	(Ex)	Shaft unit	Reduction ratio: 44,96:1 Frequency: 50 Hz Number of Poles: 4 Propeller Speed: 32 rpm Number of Poles: 6 Propeller Speed: 22 rpm Reduction ratio: 44,96:1 Frequency: 60 Hz Number of Poles: 4 Propeller Speed: 39 rpm Number of Poles: 6 Propeller Speed: 26 rpm Reduction ratio: 48,30:1 Frequency: 50 Hz Number of Poles: 4 Propeller Speed: 30 rpm Number of Poles: 6 Propeller Speed: 20 rpm Reduction ratio: 48,30:1 Frequency: 60 Hz Number of Poles: 4 Propeller Speed: 36 rpm Number of Poles: 6 Propeller Speed: 24 rpm Reduction ratio: 31,04:1 Frequency: 50 Hz Number of Poles: 4 Propeller Speed: 46 rpm Reduction ratio: 34,80:1 Frequency: 50 Hz Number of Poles: 4 Propeller Speed: 41 rpm	1	1
51	398 97 06		Sleeve		1	
52	464 54 02		Bearing holder	Bearing holder Bearing holder Bearing holder *** For FD use only *** Water in oil supervision : KOD Bearing holder Leakage detector in the stator house :FLS	1	
52	464 54 03		Bearing holder	Bearing holder Leakage detector in the stator house :FLS Water in oil supervision : CLS Bearing holder Water in oil supervision : CLS	1	
52	464 54 06	(Ex)	Bearing holder	Bearing holder Bearing holder Bearing holder Leakage detector in the stator house :FLS		1

Pos. No	Part. No	Type	Denomination	Qty/Version	
				011	090
53	464 46 00		Gear Reduction ratio: 36,39:1 Frequency: 50 Hz Number of Poles: 4 Propeller Speed: 39 rpm Number of Poles: 6 Propeller Speed: 26 rpm Reduction: 36,39:1 Frequency: 60 Hz Number of Poles: 4 Propeller Speed: 47 rpm Reduction ratio: 56,64:1 Frequency: 50 Hz Number of Poles: 4 Propeller Speed: 26 rpm Number of Poles: 6 Propeller Speed: 17 rpm Reduction ratio: 56,64:1 Frequency: 60 Hz Number of Poles: 4 Propeller Speed: 31 rpm Number of Poles: 6 Propeller Speed: 21 rpm Reduction ratio: 40,81:1 Frequency: 50 Hz Number of Poles: 4 Propeller Speed: 35 rpm Number of Poles: 6 Propeller Speed: 24 rpm Reduction ratio: 40,81:1 Frequency: 60 Hz Number of Poles: 4 Propeller Speed: 42 rpm Reduction ratio: 52,71:1 Frequency: 50 Hz Number of Poles: 4 Propeller Speed: 28 rpm Number of Poles: 6 Propeller Speed: 19 rpm Reduction ratio: 52,71:1 Frequency: 60 Hz Number of Poles: 4 Propeller Speed: 33 rpm Number of Poles: 6 Propeller Speed: 22 rpm	1	1

4 List of Parts

Pos. No	Part. No	Type	Denomination	Qty/Version	
				011	090
53	464 46 01		Gear Reduction ratio: 44,96:1 Frequency: 50 Hz Number of Poles: 4 Propeller Speed: 32 rpm Number of Poles: 6 Propeller Speed: 22 rpm Reduction ratio: 44,96:1 Frequency: 60 Hz Number of Poles: 4 Propeller Speed: 39 rpm Number of Poles: 6 Propeller Speed: 26 rpm Reduction ratio: 48,30:1 Frequency: 50 Hz Number of Poles: 4 Propeller Speed: 30 rpm Number of Poles: 6 Propeller Speed: 20 rpm Reduction ratio: 48,30:1 Frequency: 60 Hz Number of Poles: 4 Propeller Speed: 36 rpm Number of Poles: 6 Propeller Speed: 24 rpm Reduction ratio: 31,04:1 Frequency: 50 Hz Number of Poles: 4 Propeller Speed: 46 rpm Reduction ratio: 34,80:1 Frequency: 50 Hz Number of Poles: 4 Propeller Speed: 41 rpm	1	1
54	464 48 00		Shaft Reduction ratio: 44,96:1 Frequency: 50 Hz Number of Poles: 4 Propeller Speed: 32 rpm Number of Poles: 6 Propeller Speed: 22 rpm Reduction ratio: 44,96:1 Frequency: 60 Hz Number of Poles: 4 Propeller Speed: 39 rpm Number of Poles: 6 Propeller Speed: 26 rpm Reduction ratio: 52,71:1 Frequency: 50 Hz Number of Poles: 4 Propeller Speed: 28 rpm Number of Poles: 6 Propeller Speed: 19 rpm Reduction ratio: 52,71:1 Frequency: 60 Hz Number of Poles: 4 Propeller Speed: 33 rpm Number of Poles: 6 Propeller Speed: 22 rpm	1	1

Pos. No	Part. No	Type	Denomination	Qty/Version	
				011	090
54	464 48 01		Shaft Reduction ratio: 36,39:1 Frequency: 50 Hz Number of Poles: 4 Propeller Speed: 39 rpm Number of Poles: 6 Propeller Speed: 26 rpm Reduction: 36,39:1 Frequency: 60 Hz Number of Poles: 4 Propeller Speed: 47 rpm Reduction ratio: 31,04:1 Frequency: 50 Hz Number of Poles: 4 Propeller Speed: 46 rpm	1	1
54	464 48 03		Shaft Reduction ratio: 48,30:1 Frequency: 50 Hz Number of Poles: 4 Propeller Speed: 30 rpm Number of Poles: 6 Propeller Speed: 20 rpm Reduction ratio: 48,30:1 Frequency: 60 Hz Number of Poles: 4 Propeller Speed: 36 rpm Number of Poles: 6 Propeller Speed: 24 rpm Reduction ratio: 56,64:1 Frequency: 50 Hz Number of Poles: 4 Propeller Speed: 26 rpm Number of Poles: 6 Propeller Speed: 17 rpm Reduction ratio: 56,64:1 Frequency: 60 Hz Number of Poles: 4 Propeller Speed: 31 rpm Number of Poles: 6 Propeller Speed: 21 rpm	1	1
54	464 48 02		Shaft Reduction ratio: 40,81:1 Frequency: 50 Hz Number of Poles: 4 Propeller Speed: 35 rpm Number of Poles: 6 Propeller Speed: 24 rpm Reduction ratio: 40,81:1 Frequency: 60 Hz Number of Poles: 4 Propeller Speed: 42 rpm Reduction ratio: 34,80:1 Frequency: 50 Hz Number of Poles: 4 Propeller Speed: 41 rpm	1	1

Pos. No	Part. No	Type	Denomination	Qty/Version	
				011	090
55	464 49 00		Gear Reduction ratio: 44,96:1 Frequency: 50 Hz Number of Poles: 4 Propeller Speed: 32 rpm Number of Poles: 6 Propeller Speed: 22 rpm Reduction ratio: 44,96:1 Frequency: 60 Hz Number of Poles: 4 Propeller Speed: 39 rpm Number of Poles: 6 Propeller Speed: 26 rpm Reduction ratio: 52,71:1 Frequency: 50 Hz Number of Poles: 4 Propeller Speed: 28 rpm Number of Poles: 6 Propeller Speed: 19 rpm Reduction ratio: 52,71:1 Frequency: 60 Hz Number of Poles: 4 Propeller Speed: 33 rpm Number of Poles: 6 Propeller Speed: 22 rpm	1	1
55	464 49 01		Gear Reduction ratio: 36,39:1 Frequency: 50 Hz Number of Poles: 4 Propeller Speed: 39 rpm Number of Poles: 6 Propeller Speed: 26 rpm Reduction: 36,39:1 Frequency: 60 Hz Number of Poles: 4 Propeller Speed: 47 rpm Reduction ratio: 31,04:1 Frequency: 50 Hz Number of Poles: 4 Propeller Speed: 46 rpm	1	1
55	464 49 03		Gear Reduction ratio: 48,30:1 Frequency: 50 Hz Number of Poles: 4 Propeller Speed: 30 rpm Number of Poles: 6 Propeller Speed: 20 rpm Reduction ratio: 48,30:1 Frequency: 60 Hz Number of Poles: 4 Propeller Speed: 36 rpm Number of Poles: 6 Propeller Speed: 24 rpm Reduction ratio: 56,64:1 Frequency: 50 Hz Number of Poles: 4 Propeller Speed: 26 rpm Number of Poles: 6 Propeller Speed: 17 rpm Reduction ratio: 56,64:1 Frequency: 60 Hz Number of Poles: 4 Propeller Speed: 31 rpm Number of Poles: 6 Propeller Speed: 21 rpm	1	1

Pos. No	Part. No	Type	Denomination	Qty/Version	
				011	090
55	464 49 02		Gear Reduction ratio: 40,81:1 Frequency: 50 Hz Number of Poles: 4 Propeller Speed: 35 rpm Number of Poles: 6 Propeller Speed: 24 rpm Reduction ratio: 40,81:1 Frequency: 60 Hz Number of Poles: 4 Propeller Speed: 42 rpm Reduction ratio: 34,80:1 Frequency: 50 Hz Number of Poles: 4 Propeller Speed: 41 rpm	1	1
56	464 51 05	(Ex)	Gear housing	1	1
57	416 94 00		Inspection screw	1	1
58	428 22 17		Inspection screw BRASS	3	4
58	428 22 17		Inspection screw BRASS	1	
60	464 61 00		Ring	1	1
61	775 80 00		Supporting washer	1	1
62	464 50 00		Shaft	1	1
63	493 97 00		Ring	1	1
64	456 71 00		Compression spring	12	12
65	464 59 00		Washer 63X104X1.5	1	1
66	496 04 00		Oil housing	1	1
67	382 83 00		Wear protection NBR-A2	1	1
68	384 03 10		Mechanical seal WCCR/WCCR FPM	1	1
75	549 09 00		Propeller blade OD=2500mm	2	2
75	549 09 01		Propeller blade OD=2200mm	2	2
75	549 09 02		Propeller blade OD=2000mm	2	2
75	549 09 03		Propeller blade OD=1800mm	2	2
75	549 09 04		Propeller blade OD=1700mm	2	2
75	549 09 05		Propeller blade OD=1600mm	2	2
75	549 09 06		Propeller blade OD=1500mm	2	2
75	549 09 11		Propeller blade OD=1400mm	2	2
79	777 90 11		Propeller hub Coating: Std Thickness = min 120 micrometer M0700.00.0004	1	1
79	777 90 12		Propeller hub Coating: Spec Thickness = 360 - 450 micrometer M0700.00.0008	1	1
79	777 90 13		Propeller hub Coating: Thickness = 450 - 550 micrometer MBBR M0700.00.0011	1	1
79	777 90 10		Propeller hub Coating: Primer M0700.00.0002	1	1
82	83 43 58		Cable lug UL/CSA 1.04-2.62 MM2 M6	1	1

Pos. No	Part. No	Type	Denomination	Qty/Version	
				011	090
83	83 44 24		Closed-end splice 3-6 (AWG 12-10) 50 Hz 4-poles 380V Y 220V D P2=2,30kW 60 Hz 4-poles 440V-460V Y 260V D P2=2,60kW/3,50hp 50 Hz 4-poles 690V Y 400V D P2=2,30kW 60 Hz 6-poles 200V-208V Y P2=1,10kW/1,50hp 50 Hz 4-poles 500V-550V Y P2=2,30kW 60 Hz 4-poles 575V Y P2=2,60kW/3,50hp 50 Hz 4-poles 660V Y 380V D P2=2,30kW 60 Hz 4-poles 440V-460V D P2=2,60kW/3,50hp 50 Hz 6-poles 380V Y 220V D P2=0,90kW 60 Hz 6-poles 440V-460V Y 260V D P2=1,10kW/1,50hp Bearing holder Leakage detector in the stator house :FLS 50 Hz 4-poles 190V-200V Y P2=2,30kW 60 Hz 4-poles 200V-220V Y P2=2,60kW/3,50hp 50 Hz 6-poles 415V Y P2=0,90kW 60 Hz 6-poles 480V Y P2=1,10kW/1,50hp 50 Hz 4-poles 400V Y 230V D P2=2,30kW 50 Hz 4-poles 400V-440V Y P2=2,30kW 60 Hz 4-poles 480V Y P2=2,60kW/3,50hp 50 Hz 6-poles 400V Y 230V D P2=0,90kW 60 Hz 4-poles 440V-460V YSER 220V-230V Y// P2=2,60kW/ 3,50hp 50 Hz 6-poles 660V-690V Y 380V-400V D P2=0,90kW 60 Hz 6-poles 440V-460V D P2=1,10kW/1,50hp 50 Hz 4-poles 346V-350V Y 200V-208V D P2=2,30kW 60 Hz 4-poles 400V Y 230V-240V D P2=2,60kW/ 3,50hp 50 Hz 6-poles 500V-550V Y P2=0,90kW	9	9

Pos. No	Part. No	Type	Denomination	Qty/Version	
				011	090
			60 Hz 6-poles 575V-600V Y P2=1,10kW/1,50hp		

Pos. No	Part. No	Type	Denomination	Qty/Version	
				011	090
83	83 44 24		Closed-end splice 3-6 (AWG 12-10) 50 Hz 4-poles 380V Y 220V D P2=2,30kW 60 Hz 4-poles 440V-460V Y 260V D P2=2,60kW/3,50hp 50 Hz 4-poles 690V Y 400V D P2=2,30kW 60 Hz 6-poles 200V-208V Y P2=1,10kW/1,50hp 50 Hz 4-poles 500V-550V Y P2=2,30kW 60 Hz 4-poles 575V Y P2=2,60kW/3,50hp 50 Hz 4-poles 660V Y 380V D P2=2,30kW 60 Hz 4-poles 440V-460V D P2=2,60kW/3,50hp 50 Hz 6-poles 380V Y 220V D P2=0,90kW 60 Hz 6-poles 440V-460V Y 260V D P2=1,10kW/1,50hp Bearing holder Leakage detector in the stator house :FLS 50 Hz 4-poles 190V-200V Y P2=2,30kW 60 Hz 4-poles 200V-220V Y P2=2,60kW/3,50hp 50 Hz 6-poles 415V Y P2=0,90kW 60 Hz 6-poles 480V Y P2=1,10kW/1,50hp 50 Hz 4-poles 400V Y 230V D P2=2,30kW 50 Hz 4-poles 400V-440V Y P2=2,30kW 60 Hz 4-poles 480V Y P2=2,60kW/3,50hp 50 Hz 6-poles 400V Y 230V D P2=0,90kW 60 Hz 4-poles 440V-460V YSER 220V-230V Y// P2=2,60kW/ 3,50hp 50 Hz 6-poles 660V-690V Y 380V-400V D P2=0,90kW 60 Hz 6-poles 440V-460V D P2=1,10kW/1,50hp 50 Hz 4-poles 346V-350V Y 200V-208V D P2=2,30kW 60 Hz 4-poles 400V Y 230V-240V D P2=2,60kW/ 3,50hp 50 Hz 6-poles 500V-550V Y P2=0,90kW	6	6

Pos. No	Part. No	Type	Denomination	Qty/Version	
				011	090
			60 Hz 6-poles 575V-600V Y P2=1,10kW/1,50hp		

Pos. No	Part. No	Type	Denomination	Qty/Version	
				011	090
83	83 44 24		Closed-end splice 3-6 (AWG 12-10) 50 Hz 4-poles 380V Y 220V D P2=2,30kW 60 Hz 4-poles 440V-460V Y 260V D P2=2,60kW/3,50hp 50 Hz 4-poles 690V Y 400V D P2=2,30kW 60 Hz 6-poles 200V-208V Y P2=1,10kW/1,50hp 50 Hz 4-poles 500V-550V Y P2=2,30kW 60 Hz 4-poles 575V Y P2=2,60kW/3,50hp 50 Hz 4-poles 660V Y 380V D P2=2,30kW 60 Hz 4-poles 440V-460V D P2=2,60kW/3,50hp 50 Hz 6-poles 380V Y 220V D P2=0,90kW 60 Hz 6-poles 440V-460V Y 260V D P2=1,10kW/1,50hp Bearing holder Leakage detector in the stator house :FLS 50 Hz 4-poles 190V-200V Y P2=2,30kW 60 Hz 4-poles 200V-220V Y P2=2,60kW/3,50hp 50 Hz 6-poles 415V Y P2=0,90kW 60 Hz 6-poles 480V Y P2=1,10kW/1,50hp 50 Hz 4-poles 400V Y 230V D P2=2,30kW 50 Hz 4-poles 400V-440V Y P2=2,30kW 60 Hz 4-poles 480V Y P2=2,60kW/3,50hp 50 Hz 6-poles 400V Y 230V D P2=0,90kW 60 Hz 4-poles 440V-460V YSER 220V-230V Y// P2=2,60kW/ 3,50hp 50 Hz 6-poles 660V-690V Y 380V-400V D P2=0,90kW 60 Hz 6-poles 440V-460V D P2=1,10kW/1,50hp 50 Hz 4-poles 346V-350V Y 200V-208V D P2=2,30kW 60 Hz 4-poles 400V Y 230V-240V D P2=2,60kW/ 3,50hp 50 Hz 6-poles 500V-550V Y P2=0,90kW	3	3

Pos. No	Part. No	Type	Denomination	Qty/Version	
				011	090
			60 Hz 6-poles 575V-600V Y P2=1,10kW/1,50hp		
84	83 44 24		Closed-end splice 3-6 (AWG 12-10)	2	2
95	397 81 00	(Ex)	Gland screw Pr 37	1	1
96	82 42 42		Plain washer 24.5X35X2-A4-70	1	1
97	84 17 93		Seal sleeve (16)-18 MM NBR	1	1
101	678 58 18	(Ex)	Cable clip 16-(18) MM	1	1
102	94 20 59		Motor cable subcab 4G2.5+2X1.5	*	*
103	83 45 59		Cable tie 200X2.4 PA 6/6 -55+105	5	5
105	630 68 00	(Ex)	Data plate USE 6306801 AS SPARE PART	2	3
105	775 03 00		Connection plate	1	1
105	630 69 00	(Ex)	Certificate plate EN		3
106	83 02 58		Hex.socket hd screw M5X12- A4-70		2
107	279 29 00	(Ex)	Earthing plate		1
108	838 12 00		Bending protection	1	1
109	846 46 00		Bracket	1	1
110	846 65 00		Bracket	1	1
111	83 04 45		Hex.socket hd screw M8X35- A4-80	2	2
112	504 78 06		Cable unit	1	
113	505 12 00		Leakage sensor (CLS30)	1	
114	671 31 00		Leakage sensor	1	1
114,1	679 03 00		Holder	1	1
114,2	518 89 02		Leakage sensor (FLS)	1	1
115	504 78 07		Cable unit	1	1
116	81 41 52		Hexagon head screw M12X20- A2-70	1	1
116	81 41 52		Hexagon head screw M12X20- A2-70	2	
117	83 97 48		Leakage sensor unit	1	
118	82 27 27		Lock nut M8-A4-70	2	2
120	85 09 83		Cable holder	1	1
			Power cable x 1 SUBCAB 4G2,5+2x1,5 17 - 18mm L= 10m Max 750V With cable handling kit		
			Power cable x 1 SUBCAB 4G2,5+2x1,5 17 - 18mm L= 16m Max 750V With cable handling kit		
			Power cable x 1 SUBCAB 4G2,5+2x1,5 17 - 18mm L= 20m Max 750V With cable handling kit		

Pos. No	Part. No	Type	Denomination	Qty/Version		
				011	090	
120	84 66 55		Cable clamp RUBBER SEALING STRIP 15MM	Parts for Registration module Order on part numbers Bearing holder *** For FD use only *** Water in oil supervision : KOD	1	1
120	84 60 64		Cable clamp RUBBER SEALING STRIP 17MM	Parts for Registration module Order on part numbers	1	1
120	84 60 65		Cable clamp RUBBER SEALING STRIP 19MM	Parts for Registration module Order on part numbers	1	
120	84 64 36		Cable clamp RUBBER SEALING STRIP 21MM	Parts for Registration module Order on part numbers		1
122	82 27 26		Lock nut M6-A4-70		1	1
138	83 03 76		Hex.socket hd screw M16X70-A4-70		8	8
139	82 50 19		Lock washer M16		8	8
141	481 95 09		Stand unit		1	1
142	842 76 00		Lifting handle		1	1
144	82 66 73		Plug		3	3
144	82 69 41		Protective plug F11			1
166	482 04 02		Support		1	1
166	482 04 02		Support		2	2
172	82 26 49		Shackle		2	2
174	82 27 30		Lock nut M16-A4-70		8	8
175	509 53 05		Stand unit	Double guide bars Guide bar dimension: OD 114,3mm Material: Stainless steel (ASTM 304)	1	1
175,2	82 23 35		Hexagon nut M12-A4-70		4	4
175,3	82 35 71		Plain washer 4.3X9X0.8-A4-170HV		12	12
175,4	82 50 17		Lock washer M12		8	8
175,6	83 03 47		Hex.socket hd screw M12X35-A4-70		4	4
175,7	84 24 58		Blind rivet		12	12
175,9	509 45 00		Claw		2	2
175,10	547 84 01		Lifting handle		1	1
175,11	504 56 03		Stand		1	1
175	509 53 06		Stand unit	Double guide bars Guide bar dimension: OD 114,3mm Material: stainless steel (ASTM 316L)	1	1
175,2	82 23 35		Hexagon nut M12-A4-70		4	4
175,3	82 35 71		Plain washer 4.3X9X0.8-A4-170HV		12	12
175,4	82 50 17		Lock washer M12		8	8
175,6	83 03 47		Hex.socket hd screw M12X35-A4-70		4	4
175,7	84 24 58		Blind rivet		12	12
175,9	509 45 00		Claw		2	2

Pos. No	Part. No	Type	Denomination	Qty/Version	
				011	090
175,10	547 84 02		Lifting handle	1	1
176	753 29 00		Mounting kit PROPELLER	1	1
176,1	80 46 27		Parallel key 14H9X9H11X70	2	2
176,2	791 13 00		Damper	2	2
176,3	83 03 76		Hex.socket hd screw M16X70-A4-70	1	1
176,4	384 61 00		Supporting washer	1	1
176,5	82 77 96		O-ring 57.5X3 NBR	1	1
176,7	81 49 32		Hexagon head screw M16X45-A4-70	2	2
176,8	82 50 19		Lock washer M16	2	2
176,9	494 78 01		Supporting washer	2	2
176,10	82 74 66		O-ring 64.5X3 NBR	2	2
177	851 77 00	(Ex)	Distance block	2	2
177	851 77 00	(Ex)	Distance block	4	4
179	83 03 76		Hex.socket hd screw M16X70-A4-70	8	8
181	82 50 17		Lock washer M12	1	2
181	82 50 17		Lock washer M12	2	
222	679 03 00		Holder	2	
250	726 11 00		Fastening kit	1	1
400	667 40 00		Sticker	2	2
800	82 97 16		O-ring kits	1	1
801	466 26 14		Zinc anode kit	1	1
			Parts for Registration module Order on part numbers		
801	466 26 15		Zinc anode kit	1	1
			Parts for Registration module Order on part numbers		
810	584 92 00		Rebuilding kit DIAM.2.5	1	1
810	584 92 01		Rebuilding kit DIAM.2.2	1	1
810	584 92 02		Rebuilding kit DIAM.2	1	1
810	584 92 03		Rebuilding kit DIAM.1.8	1	1
810	584 92 04		Rebuilding kit DIAM.1.7	1	1
810	584 92 05		Rebuilding kit DIAM.1.6	1	1
810	584 92 06		Rebuilding kit DIAM.1.5	1	1
810	584 92 07		Rebuilding kit DIAM.1.4	1	1
810	584 92 10		Rebuilding kit DIAM.2.5	1	1
810	584 92 11		Rebuilding kit DIAM.2.2	1	1
810	584 92 12		Rebuilding kit DIAM.2	1	1
810	584 92 13		Rebuilding kit DIAM.1.8	1	1
810	584 92 14		Rebuilding kit DIAM.1.7	1	1
810	584 92 15		Rebuilding kit DIAM.1.6	1	1
810	584 92 16		Rebuilding kit DIAM.1.5	1	1
810	584 92 17		Rebuilding kit DIAM.1.4	1	1
810	584 92 20		Rebuilding kit DIAM.2.5	1	1
810	584 92 21		Rebuilding kit DIAM.2.2	1	1

4 List of Parts

Pos. No	Part. No	Type	Denomination	Qty/Version		
				011	090	
810	584 92 22		Rebuilding kit DIAM.2	Parts for Aftermarket	1	1
810	584 92 23		Rebuilding kit DIAM.1.8	Parts for Aftermarket	1	1
810	584 92 24		Rebuilding kit DIAM.1.7	Parts for Aftermarket	1	1
810	584 92 25		Rebuilding kit DIAM.1.6	Parts for Aftermarket	1	1
810	584 92 26		Rebuilding kit DIAM.1.5	Parts for Aftermarket	1	1
810	584 92 27		Rebuilding kit DIAM.1.4	Parts for Aftermarket	1	1
813	823 26 04		Handling kit	Power cable x 1 SUBCAB 4G2,5+2x1,5 17 - 18mm L= 10m Max 750V	1	1
813	823 26 05		Handling kit	Power cable x 1 SUBCAB 4G2,5+2x1,5 17 - 18mm L= 20m Max 750V	1	1
813	823 26 06		Handling kit	Power cable x 1 SUBCAB 4G2,5+2x1,5 17 - 18mm L= 16m Max 750V	1	1
900	726 38 00		Basic repair kit		1	1
901	90 17 52		Oil ISO VG 32		*	*
901	90 17 58		Oil GEAR UNITS		5	5
912	82 73 90		O-ring 19.2X3 NBR		5	5
915	659 35 00		Mounting kit MBBR		1	1

Xylem |'zīləm|

- 1) The tissue in plants that brings water upward from the roots;
- 2) a leading global water technology company.

We're a global team unified in a common purpose: creating advanced technology solutions to the world's water challenges. Developing new technologies that will improve the way water is used, conserved, and re-used in the future is central to our work. Our products and services move, treat, analyze, monitor and return water to the environment, in public utility, industrial, residential and commercial building services settings. Xylem also provides a leading portfolio of smart metering, network technologies and advanced analytics solutions for water, electric and gas utilities. In more than 150 countries, we have strong, long-standing relationships with customers who know us for our powerful combination of leading product brands and applications expertise with a strong focus on developing comprehensive, sustainable solutions.

For more information on how Xylem can help you, go to www.xylem.com



Xylem Water Solutions Global
Services AB 556782-9253
361 80 Emmaboda
Sweden
Tel: +46-471-24 70 00
Fax: +46-471-24 74 01
<http://tpi.xylem.com>
[www.xylemwatersolutions.com/
contacts/](http://www.xylemwatersolutions.com/contacts/)

Visit our Web site for the latest version of this document and more information

The original instruction is in English. All non-English instructions are translations of the original instruction.

© 2012 Xylem Inc