

Flygt 4460

Table of Contents

1	Introduction.....	2
1.1	Specially approved products.....	2
2	Product Description.....	3
2.1	The data plate.....	3
2.2	Approvals.....	3
2.3	Product denomination.....	5
3	Exploded View.....	6
3.1	Drive unit.....	6
3.2	Hydraulic unit.....	7
3.3	Installation components.....	8
4	List of Parts.....	11
4.1	4460.010/020/090.....	11

1 Introduction

Purpose of this manual

The purpose of this manual is to provide necessary information on spare parts and accessories order.

Disclaimer

Always use genuine Flygt parts. The use of other spare parts or accessories can invalidate any claims for warranty or compensation. Xylem does not take any responsibility for damages that are caused by the use of non-original parts. For more information, contact your local sales and service representative.

Data for ordering spare parts

The following information is needed for spare part orders:

- Serial number of the product
- Part number
- Quantity of bulk material, see * in tables

1.1 Specially approved products

Qualification of personnel

Only Xylem or Xylem-authorized service personnel may undertake repair work on specially approved products.

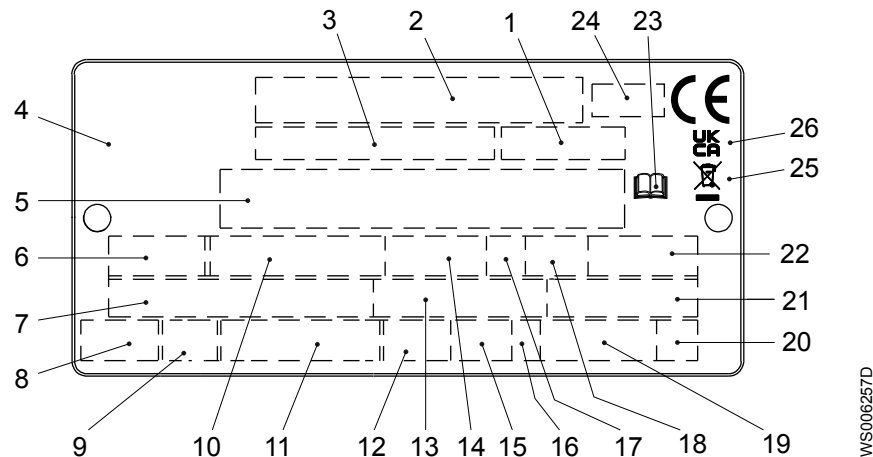
Dimensional accuracy inspection

Spare parts marked with (Ex) after the part number are subject to dimensional accuracy inspection when used in specially approved products.

2 Product Description

2.1 The data plate

The data plate is a metal label that is located on the main body of the products. The data plate lists key product specifications. Specially approved products also have an approval plate.



1. Curve code or Propeller code
2. Serial number
3. Product number
4. Country of origin
5. Additional information
6. Phase; type of current; frequency
7. Rated voltage
8. Thermal protection
9. Thermal class
10. Rated shaft power
11. International standard
12. Degree of protection
13. Rated current
14. Rated speed
15. Maximum submergence
16. Direction of rotation: L=left, R=right
17. Duty class
18. Duty factor
19. Product weight
20. Locked rotor code letter
21. Power factor
22. Maximum ambient temperature
23. Read installation manual
24. Notified body, only for EN-approved Ex products
25. WEEE-Directive symbol
26. UKCA marking

Figure 1: The data plate

2.2 Approvals

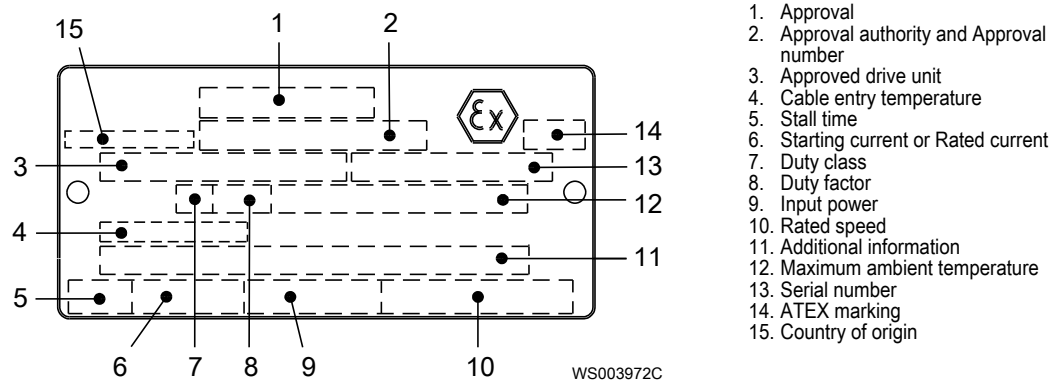
Product approvals for hazardous locations

Product	Approval
4460.090	European Norm (EN) <ul style="list-style-type: none"> • ATEX Directive • EN IEC 60079-0:2018, EN 60079-1:2014, EN ISO 80079-36:2016, EN ISO 80079-37:2016 • Ex II 2 G Ex db h IIB T4 Gb

Product	Approval
	IEC <ul style="list-style-type: none"> • IECEx scheme • IEC 60079-0:2017, IEC 60079-1:2014-06, ISO 80079-36:2016, ISO 80079-37:2016 • Ex db h IIB T4 Gb
	FM (FM Approvals) <ul style="list-style-type: none"> • Explosion proof for use in Class I, Div. 1, Group C and D • Dust ignition proof for use in Class II, Div. 1, Group E, F and G • Suitable for use in Class III, Div. 1, Hazardous Locations

EN approval plate

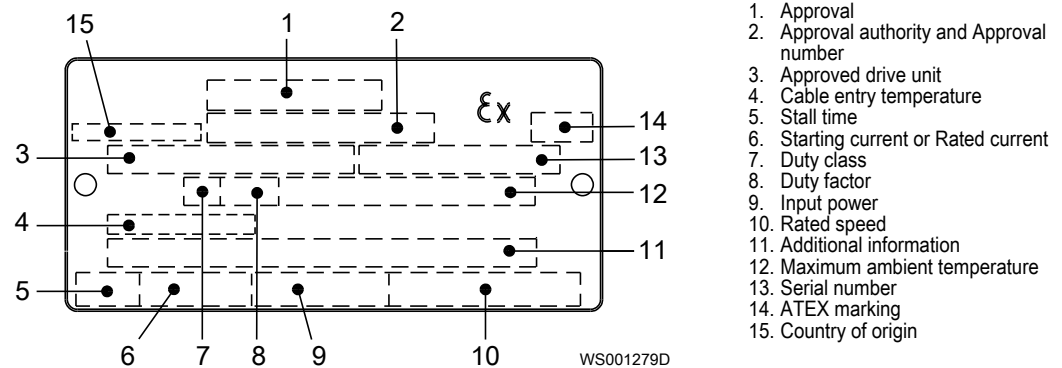
This illustration describes the EN approval plate and the information that is contained in its fields.



IEC approval plate

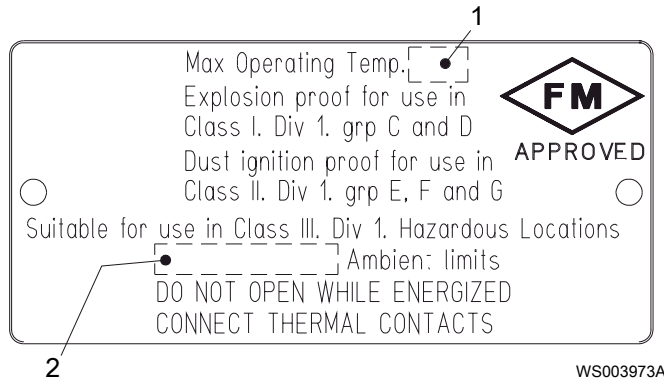
This illustration describes the IEC approval plate and the information that is contained in its fields.

International Norm; not for EU member countries.



FM approval plate

This illustration describes the FM approval plate and the information that is contained in its fields.



- 1. Temperature class
- 2. Maximum ambient temperature

2.3 Product denomination

Reading instruction

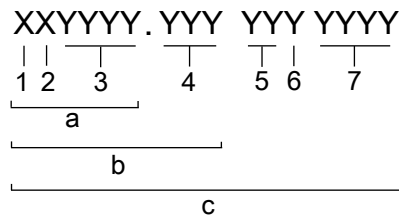
In this section, code characters are illustrated accordingly:

X = letter

Y = digit

The different types of codes are marked up with a, b and c. Code parameters are marked up with numbers.

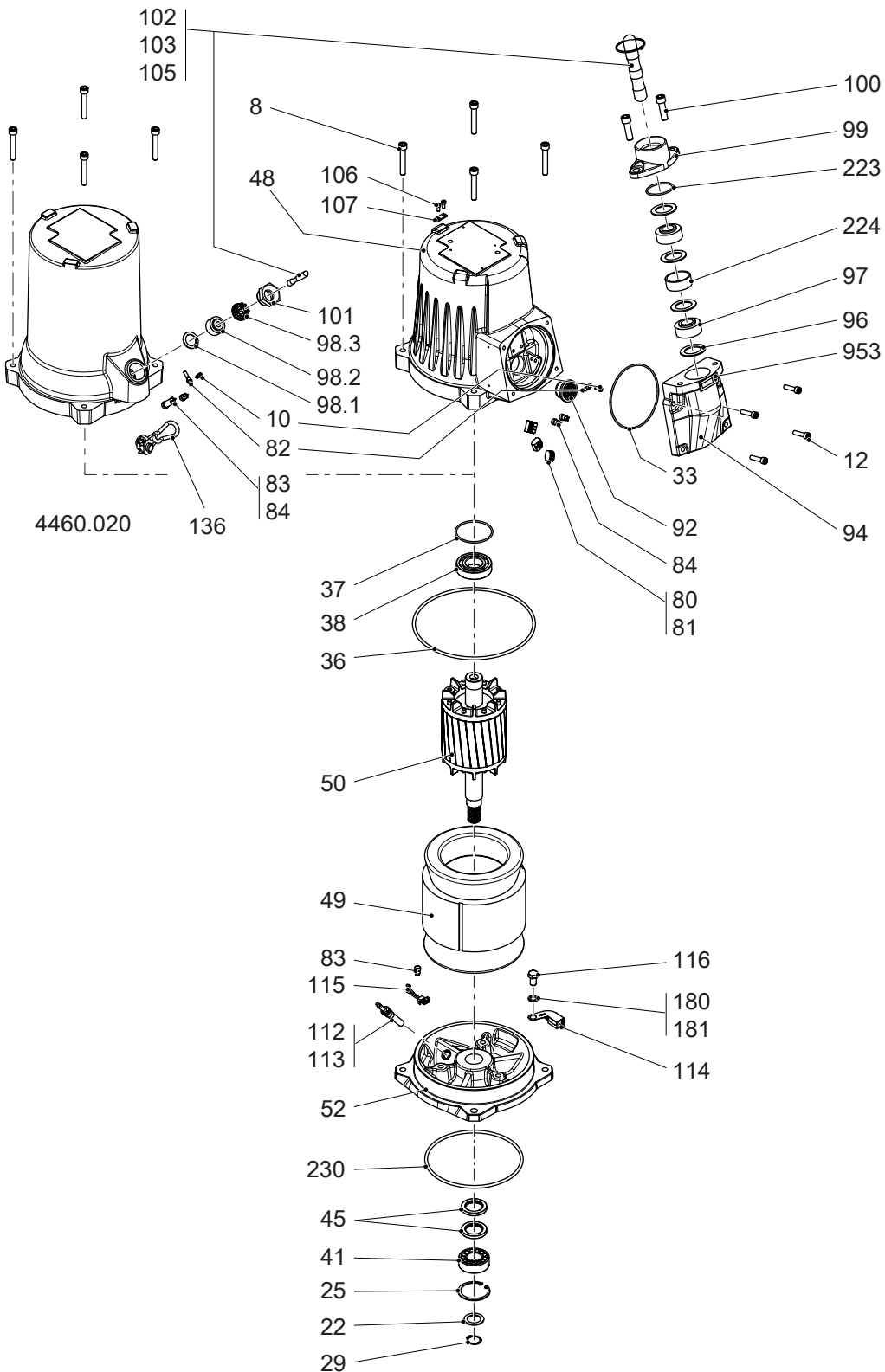
Codes and parameters



Type of Callout	Number	Indication
Type of code	a	Sales denomination
	b	Product code
	c	Serial number
Parameter	1	Hydraulic end
	2	Type of installation
	3	Sales code
	4	Version
	5	Production year
	6	Production cycle
	7	Running number

3 Exploded View

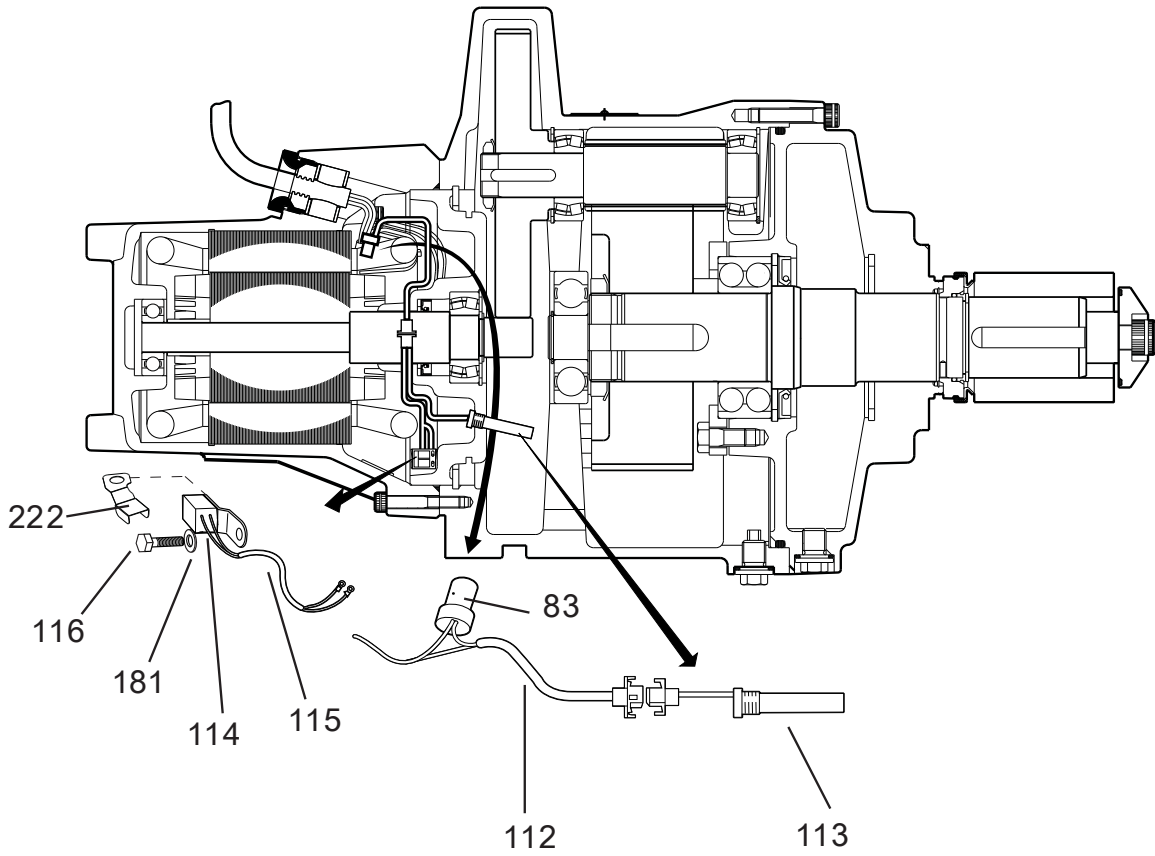
3.1 Drive unit



40900E

3.3 Installation components

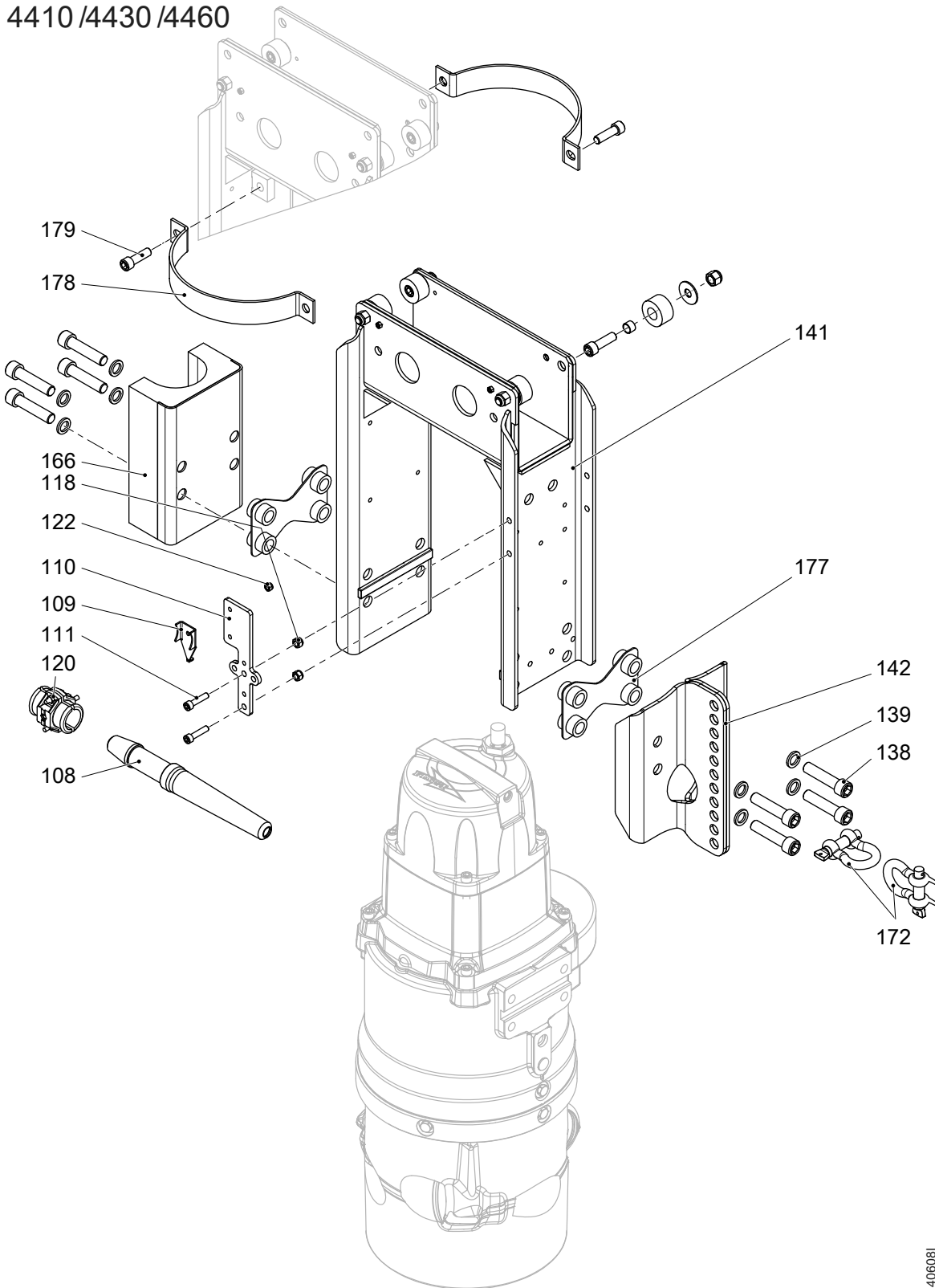
4410 /4430 /4460/4530



40822E

Figure 2: Leakage sensors

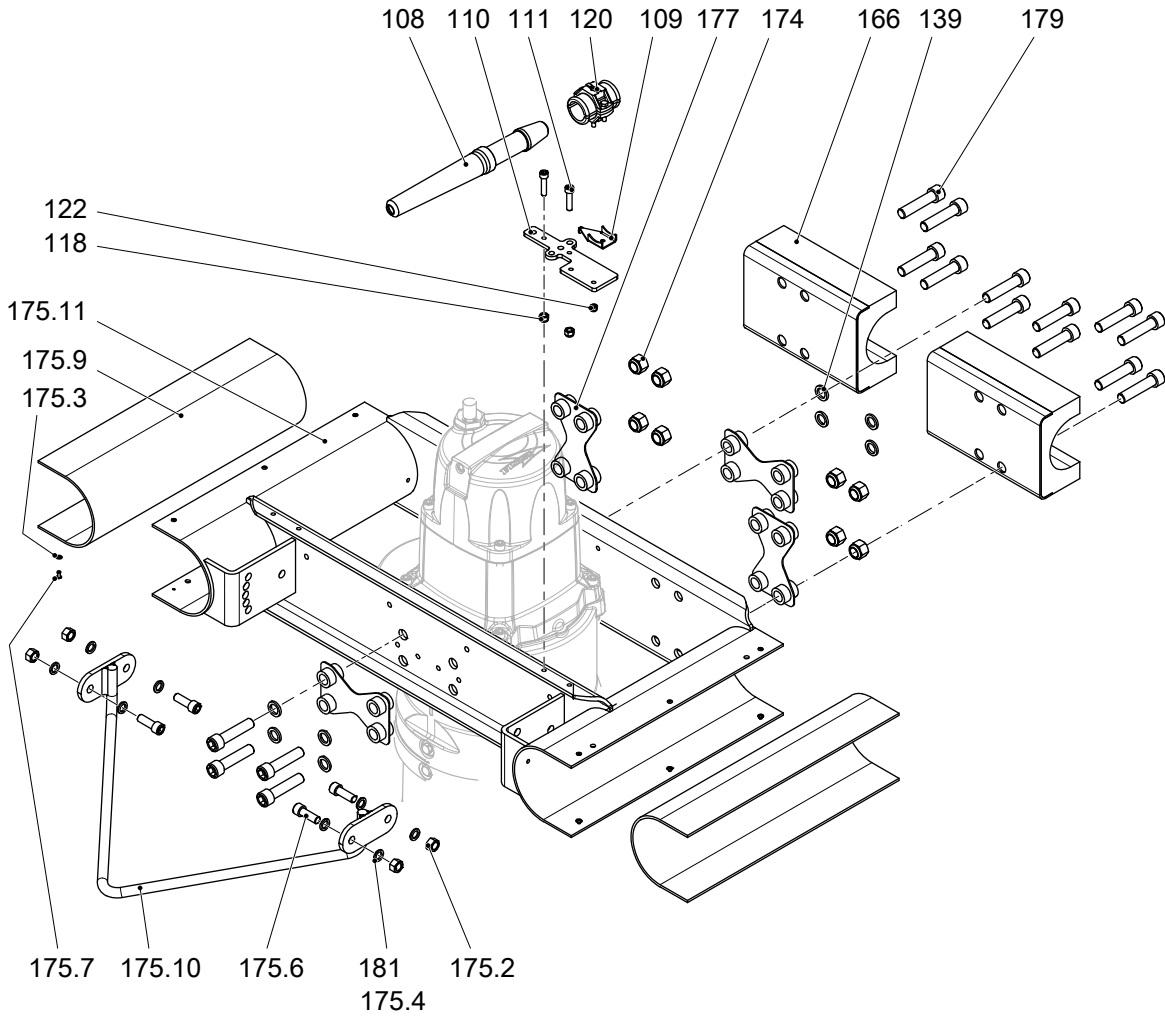
4410 /4430 /4460



406081

Figure 3: Tripod guide bar

4410 /4430 /4460



40614G

Figure 4: Double guide bar

4 List of Parts

4.1 4460.010/020/090

Pos. No	Part. No	Type	Denomination	Qty/Version		
				010	020	090
1	80 23 05		Parallel pin CP-H8-4X10-1650	1	1	1
2	80 57 71		Tension pin	2	2	2
3	80 70 62		Parallel key 8H9X7H11X40	1	1	1
4	80 46 27		Parallel key 14H9X9H11X70	1	1	1
5	80 46 31		Parallel key 18H9X11H11X56	1	1	1
6	81 41 54		Hexagon head screw M12X25-A2-70	4	4	4
7	83 03 27		Hex.socket hd screw M10X45-A4-70	6	6	6
8	83 02 65		Hex.socket hd screw M10X65-A4-70	4	4	4
10	82 17 61		Cutting screw TAPTITE-M6X12 Power cable x 1 SUBCAB S3x2,5+3x2,5/3+S(4x0,5) 18 - 20mm L= 20m Max 1000V Without cable handling kit Power cable x 1 SUBCAB S3x2,5+3x2,5/3+S(4x0,5) 18 - 20mm L= 10m Max 1000V Without cable handling kit Power cable x 1 SUBCAB S3x2,5+3x2,5/3+S(4x0,5) 18 - 20mm L= 10m Max 1000V With cable handling kit Power cable x 1 SUBCAB S3x2,5+3x2,5/3+S(4x0,5) 18 - 20mm L= 20m Max 1000V With cable handling kit Test cable SUBCAB 4G2,5+2x1,5 17 - 20mm L= 1,50m Test cable Max 750V Without cable handling kit	1	1	1

4 List of Parts

Pos. No	Part. No	Type	Denomination	Qty/Version		
				010	020	090
10	82 17 61		Cutting screw TAPTITE-M6X12 Power cable x 1 SUBCAB S3x2,5+3x2,5/3+S(4x0,5) 18 - 20mm L= 20m Max 1000V Without cable handling kit Power cable x 1 SUBCAB S3x2,5+3x2,5/3+S(4x0,5) 18 - 20mm L= 10m Max 1000V Without cable handling kit Power cable x 1 SUBCAB S3x2,5+3x2,5/3+S(4x0,5) 18 - 20mm L= 10m Max 1000V With cable handling kit Power cable x 1 SUBCAB S3x2,5+3x2,5/3+S(4x0,5) 18 - 20mm L= 20m Max 1000V With cable handling kit Test cable SUBCAB 4G2,5+2x1,5 17 - 20mm L= 1,50m Test cable Max 750V Without cable handling kit	1		1
11	82 20 88		Drive screw 4X5-A2/A4	6	6	10
12	83 04 45		Hex.socket hd screw M8X35- A4-80	4		4
15	82 22 31		Round nut M30X1.5	1	1	1
16	82 22 37		Round nut M60X2	1	1	1
17	82 31 15		Lifting eye bolt	1	1	1
17	82 69 41		Protective plug F11	1	1	1
17	84 35 20		Protective plug	2		2
17	84 35 21		Protective plug		3	
17	82 70 92		Protective plug			4
19	82 51 31		Lock washer	1	1	1
20	82 51 37		Lock washer	1	1	1

Pos. No	Part. No	Type	Denomination	Qty/Version		
				010	020	090
22	82 44 09		Supporting washer 25X35X2 Reduction ratio: 36,39:1 Frequency: 50 Hz Number of Poles: 4 Propeller Speed: 41 rpm Max ambient temperature: 40 DC Reduction ratio: 36,39:1 Frequency: 60 Hz Number of Poles: 4 Propeller Speed: 48 rpm Max ambient temperature: 40 DC Reduction ratio: 49,23:1 Frequency: 60 Hz Number of Poles: 2 Propeller Speed: 71 rpm Max ambient temperature: 40 DC Reduction ratio: 49,23:1 Frequency: 60 Hz Number of Poles: 2 Propeller Speed: 71 rpm Max ambient temperature: 60 DC Reduction ratio: 40,81:1 Frequency: 50 Hz Number of Poles: 4 Propeller Speed: 36 rpm Max ambient temperature: 40 DC Reduction ratio: 40,81:1 Frequency: 60 Hz Number of Poles: 4 Propeller Speed: 44 rpm Max ambient temperature: 40 DC	1		1
22	82 44 11		Supporting washer 28X40X2 Reduction ratio: 44,96:1 Frequency: 60 Hz Number of Poles: 2 Propeller Speed: 79 rpm Max ambient temperature: 60 DC Reduction ratio: 44,96:1 Frequency: 60 Hz Number of Poles: 2 Propeller Speed: 79 rpm Max ambient temperature: 40 DC Reduction ratio: 31,04:1 Frequency: 50 Hz Number of Poles: 2 Propeller Speed: 96 rpm Max ambient temperature: 40 DC Reduction ratio: 31,04:1 Frequency: 50 Hz Number of Poles: 2 Propeller Speed: 96 rpm Max ambient temperature: 60 DC Reduction ratio: 36,96:1 Frequency: 50 Hz Number of Poles: 2 Propeller Speed: 80 rpm Max ambient temperature: 60 DC Reduction ratio: 36,96:1 Frequency: 50 Hz Number of Poles: 2 Propeller Speed: 80 rpm Max ambient temperature: 40 DC	1		1

Pos. No	Part. No	Type	Denomination	Qty/Version		
				010	020	090
22	82 44 11		Supporting washer 28X40X2 Reduction ratio: 44,96:1 Frequency: 60 Hz Number of Poles: 2 Propeller Speed: 79 rpm Max ambient temperature: 60 DC Reduction ratio: 44,96:1 Frequency: 60 Hz Number of Poles: 2 Propeller Speed: 79 rpm Max ambient temperature: 40 DC Reduction ratio: 31,04:1 Frequency: 50 Hz Number of Poles: 2 Propeller Speed: 96 rpm Max ambient temperature: 40 DC Reduction ratio: 31,04:1 Frequency: 50 Hz Number of Poles: 2 Propeller Speed: 96 rpm Max ambient temperature: 60 DC Reduction ratio: 36,96:1 Frequency: 50 Hz Number of Poles: 2 Propeller Speed: 80 rpm Max ambient temperature: 60 DC Reduction ratio: 36,96:1 Frequency: 50 Hz Number of Poles: 2 Propeller Speed: 80 rpm Max ambient temperature: 40 DC	1	1	1
22	82 44 11		Supporting washer 28X40X2 Reduction ratio: 44,96:1 Frequency: 60 Hz Number of Poles: 2 Propeller Speed: 79 rpm Max ambient temperature: 60 DC Reduction ratio: 44,96:1 Frequency: 60 Hz Number of Poles: 2 Propeller Speed: 79 rpm Max ambient temperature: 40 DC Reduction ratio: 31,04:1 Frequency: 50 Hz Number of Poles: 2 Propeller Speed: 96 rpm Max ambient temperature: 40 DC Reduction ratio: 31,04:1 Frequency: 50 Hz Number of Poles: 2 Propeller Speed: 96 rpm Max ambient temperature: 60 DC Reduction ratio: 36,96:1 Frequency: 50 Hz Number of Poles: 2 Propeller Speed: 80 rpm Max ambient temperature: 60 DC Reduction ratio: 36,96:1 Frequency: 50 Hz Number of Poles: 2 Propeller Speed: 80 rpm Max ambient temperature: 40 DC		1	
25	82 62 12		Retaining ring SGH 62	3	3	3
26	82 62 30		Retaining ring SGH 105	1	1	1
27	82 62 32		Retaining ring SGH 110	1	1	1

Pos. No	Part. No	Type	Denomination	Qty/Version		
				010	020	090
29	82 58 95		Retaining ring SGA 24 Reduction ratio: 36,39:1 Frequency: 50 Hz Number of Poles: 4 Propeller Speed: 41 rpm Max ambient temperature: 40 DC Reduction ratio: 36,39:1 Frequency: 60 Hz Number of Poles: 4 Propeller Speed: 48 rpm Max ambient temperature: 40 DC Reduction ratio: 49,23:1 Frequency: 60 Hz Number of Poles: 2 Propeller Speed: 71 rpm Max ambient temperature: 40 DC Reduction ratio: 49,23:1 Frequency: 60 Hz Number of Poles: 2 Propeller Speed: 71 rpm Max ambient temperature: 60 DC Reduction ratio: 40,81:1 Frequency: 50 Hz Number of Poles: 4 Propeller Speed: 36 rpm Max ambient temperature: 40 DC Reduction ratio: 40,81:1 Frequency: 60 Hz Number of Poles: 4 Propeller Speed: 44 rpm Max ambient temperature: 40 DC	1		1
29	82 58 97		Retaining ring SGA 26 Reduction ratio: 44,96:1 Frequency: 60 Hz Number of Poles: 2 Propeller Speed: 79 rpm Max ambient temperature: 60 DC Reduction ratio: 44,96:1 Frequency: 60 Hz Number of Poles: 2 Propeller Speed: 79 rpm Max ambient temperature: 40 DC Reduction ratio: 31,04:1 Frequency: 50 Hz Number of Poles: 2 Propeller Speed: 96 rpm Max ambient temperature: 40 DC Reduction ratio: 31,04:1 Frequency: 50 Hz Number of Poles: 2 Propeller Speed: 96 rpm Max ambient temperature: 60 DC Reduction ratio: 36,96:1 Frequency: 50 Hz Number of Poles: 2 Propeller Speed: 80 rpm Max ambient temperature: 60 DC Reduction ratio: 36,96:1 Frequency: 50 Hz Number of Poles: 2 Propeller Speed: 80 rpm Max ambient temperature: 40 DC	1		1

Pos. No	Part. No	Type	Denomination	Qty/Version		
				010	020	090
29	82 58 97		Retaining ring SGA 26 Reduction ratio: 44,96:1 Frequency: 60 Hz Number of Poles: 2 Propeller Speed: 79 rpm Max ambient temperature: 60 DC Reduction ratio: 44,96:1 Frequency: 60 Hz Number of Poles: 2 Propeller Speed: 79 rpm Max ambient temperature: 40 DC Reduction ratio: 31,04:1 Frequency: 50 Hz Number of Poles: 2 Propeller Speed: 96 rpm Max ambient temperature: 40 DC Reduction ratio: 31,04:1 Frequency: 50 Hz Number of Poles: 2 Propeller Speed: 96 rpm Max ambient temperature: 60 DC Reduction ratio: 36,96:1 Frequency: 50 Hz Number of Poles: 2 Propeller Speed: 80 rpm Max ambient temperature: 60 DC Reduction ratio: 36,96:1 Frequency: 50 Hz Number of Poles: 2 Propeller Speed: 80 rpm Max ambient temperature: 40 DC	1	1	1
29	82 58 97		Retaining ring SGA 26 Reduction ratio: 44,96:1 Frequency: 60 Hz Number of Poles: 2 Propeller Speed: 79 rpm Max ambient temperature: 60 DC Reduction ratio: 44,96:1 Frequency: 60 Hz Number of Poles: 2 Propeller Speed: 79 rpm Max ambient temperature: 40 DC Reduction ratio: 31,04:1 Frequency: 50 Hz Number of Poles: 2 Propeller Speed: 96 rpm Max ambient temperature: 40 DC Reduction ratio: 31,04:1 Frequency: 50 Hz Number of Poles: 2 Propeller Speed: 96 rpm Max ambient temperature: 60 DC Reduction ratio: 36,96:1 Frequency: 50 Hz Number of Poles: 2 Propeller Speed: 80 rpm Max ambient temperature: 60 DC Reduction ratio: 36,96:1 Frequency: 50 Hz Number of Poles: 2 Propeller Speed: 80 rpm Max ambient temperature: 40 DC		1	
31	82 73 90		O-ring 19.2X3 NBR	5	5	5
33	82 74 79		O-ring 129.5X3 NBR	1		1
35	82 75 00		O-ring 269.3X5.7 NBR	1	1	1
36	82 74 97		O-ring 239.5X5.7 NBR	1	1	1
37	82 71 72		O-ring 71.2X3 FPM	1	1	1
38	83 32 36		Ball bearing 6207,35X72X17	1	1	1

Pos. No	Part. No	Type	Denomination	Qty/Version		
				010	020	090
39	83 35 23		Roller bearing 60X110X28	1	1	1
40	84 53 76		Roller bearing ECP(40X90X23)	1	1	1
41	83 35 72		Roller bearing 22206 CC 30X62X20	3	3	3
45	82 85 69		Seal ring	2	2	2
46	82 85 52		Seal ring 70X110X8 NITRIL	1	1	1
48	443 53 06		Stator housing	1		
48	722 70 06		Stator housing		1	
48	443 53 07	(Ex)	Stator housing			1
49	309 44 12	(Ex)	Stator 21-12-4a 60 Hz 4-poles 440V-460V YSER 220V-230V Y// P2=6,30kW/ 8,40hp	1		1
49	309 44 30	(Ex)	Stator 21-12-4a 60 Hz 4-poles 380V D P2=6,30kW/8,40hp	1		1
49	309 44 34	(Ex)	Stator 21-12-4a 50 Hz 4-poles 380V-400V Y 220V-230V D P2=5,70kW 60 Hz 4-poles 440V-460V Y 260V D P2=6,30kW/8,40hp	1		1
49	309 44 38	(Ex)	Stator 21-12-4a 50 Hz 4-poles 660V-690V Y 380V-400V D P2=5,70kW 60 Hz 4-poles 440V-460V D P2=6,30kW/8,40hp	1		1
49	309 44 44	(Ex)	Stator 21-12-4a 50 Hz 4-poles 400V-440V D P2=5,70kW	1		1
49	309 44 50	(Ex)	Stator 21-12-4a 50 Hz 4-poles 500V D P2=5,70kW 60 Hz 4-poles 575V D P2=6,30kW/8,40hp	1		1
49	309 49 01	(Ex)	Stator 21-11-2a 50 Hz 2-poles 230V D 400V Y P2=7,50kW 60 Hz 2-poles 480V Y Rated power 8,20kW Input power 9,80KW 50 Hz 2-poles 230V D 400V Y Rated power 7,50kW Input power 8,90KW 60 Hz 2-poles 480V Y P2=8,20kW/11hp	1		1
49	309 49 30	(Ex)	Stator 21-11-2a 60 Hz 2-poles 380V D 660V Y Rated power 8,20kW Input power 9,70KW 60 Hz 2-poles 380V D 660V Y P2=8,20kW/11hp	1		1

Pos. No	Part. No	Type	Denomination	Qty/Version		
				010	020	090
49	309 49 34	(Ex)	Stator 21-11-2a	1		1
			50 Hz 2-poles 220V D 380V Y P2=7,50kW 60 Hz 2-poles 260V D 440V-460V Y Rated power 8,20kW Input power 9,70KW 50 Hz 2-poles 220V D 380V Y Rated power 7,50kW Input power 8,90KW 60 Hz 2-poles 260V D 440V-460V Y P2=8,20kW/11hp			
49	309 49 38	(Ex)	Stator 21-11-2a	1		1
			50 Hz 2-poles 380V D 660V Y P2=7,50kW 60 Hz 2-poles 440V-460V D Rated power 8,20kW Input power 9,70KW 50 Hz 2-poles 380V D 660V Y Rated power 7,50kW Input power 8,90KW 60 Hz 2-poles 440V-460V D P2=8,20kW/11hp			
49	309 49 44	(Ex)	Stator 21-11-2a	1		1
			50 Hz 2-poles 400V-440V D P2=7,50kW 50 Hz 2-poles 400V-440V D Rated power 7,50kW Input power 9KW			
49	309 49 50	(Ex)	Stator 21-11-2a	1		1
			50 Hz 2-poles 500V D P2=7,50kW 60 Hz 2-poles 575V D Rated power 8,20kW Input power 9,70KW 50 Hz 2-poles 500V D Rated power 7,50kW Input power 8,90KW 60 Hz 2-poles 575V D P2=8,20kW/11hp			
49	661 39 01	(Ex)	Stator 21-18-2b		1	
			50 Hz 2-poles 400V-440V D Rated power 12kW 60 Hz 2-poles 460V-480V D Rated power 12kW Input power 13,10KW 50 Hz 2-poles 400V-440V D Rated power 12kW Input power 13,30KW 60 Hz 2-poles 460V-480V D Rated power 12kW/16,10hp			

Pos. No	Part. No	Type	Denomination	Qty/Version		
				010	020	090
50	680 19 00	(Ex)	Shaft unit Reduction ratio: 36,39:1 Frequency: 50 Hz Number of Poles: 4 Propeller Speed: 41 rpm Reduction ratio: 36,39:1 Frequency: 60 Hz Number of Poles: 4 Propeller Speed: 48 rpm Reduction ratio: 40,81:1 Frequency: 50 Hz Number of Poles: 4 Propeller Speed: 36 rpm Reduction ratio: 40,81:1 Frequency: 60 Hz Number of Poles: 4 Propeller Speed: 44 rpm	1		
50	680 19 01	(Ex)	Shaft unit Reduction ratio: 31,04:1 Frequency: 50 Hz Number of Poles: 4 Propeller Speed: 47 rpm Reduction ratio: 31,04:1 Frequency: 60 Hz Number of Poles: 4 Propeller Speed: 57 rpm Reduction ratio: 34,80:1 Frequency: 50 Hz Number of Poles: 4 Propeller Speed: 42 rpm Reduction ratio: 34,80:1 Frequency: 60 Hz Number of Poles: 4 Propeller Speed: 51 rpm	1		
50	680 19 07		Shaft unit Reduction ratio: 42:1 Frequency: 50 Hz Number of Poles: 2 Propeller Speed: 69 rpm Reduction ratio: 42:1 Frequency: 50 Hz Number of Poles: 2 Propeller Speed: 69 rpm	1		
50	680 19 06		Shaft unit Reduction ratio: 49,23:1 Frequency: 60 Hz Number of Poles: 2 Propeller Speed: 71 rpm Reduction ratio: 49,23:1 Frequency: 60 Hz Number of Poles: 2 Propeller Speed: 71 rpm	1		
50	680 19 05		Shaft unit Reduction ratio: 44,96:1 Frequency: 60 Hz Number of Poles: 2 Propeller Speed: 79 rpm Reduction ratio: 44,96:1 Frequency: 60 Hz Number of Poles: 2 Propeller Speed: 79 rpm Reduction ratio: 31,04:1 Frequency: 50 Hz Number of Poles: 2 Propeller Speed: 96 rpm Reduction ratio: 31,04:1 Frequency: 50 Hz Number of Poles: 2 Propeller Speed: 96 rpm Reduction ratio: 36,96:1 Frequency: 50 Hz Number of Poles: 2 Propeller Speed: 80 rpm Reduction ratio: 36,96:1 Frequency: 50 Hz Number of Poles: 2 Propeller Speed: 80 rpm		1	

4 List of Parts

Pos. No	Part. No	Type	Denomination	Qty/Version		
				010	020	090
50	680 19 10	(Ex)	Shaft unit Reduction ratio: 36,39:1 Frequency: 50 Hz Number of Poles: 4 Propeller Speed: 40 rpm Reduction ratio: 36,39:1 Frequency: 60 Hz Number of Poles: 4 Propeller Speed: 48 rpm Reduction ratio: 40,81:1 Frequency: 50 Hz Number of Poles: 4 Propeller Speed: 36 rpm Reduction ratio: 40,81:1 Frequency: 60 Hz Number of Poles: 4 Propeller Speed: 44 rpm			1
50	680 19 11	(Ex)	Shaft unit Reduction ratio: 31,04:1 Frequency: 50 Hz Number of Poles: 4 Propeller Speed: 47 rpm Reduction ratio: 31,04:1 Frequency: 60 Hz Number of Poles: 4 Propeller Speed: 57 rpm Reduction ratio: 34,80:1 Frequency: 50 Hz Number of Poles: 4 Propeller Speed: 42 rpm Reduction ratio: 34,80:1 Frequency: 60 Hz Number of Poles: 4 Propeller Speed: 51 rpm			1
50	680 19 17	(Ex)	Shaft unit Reduction ratio: 42:1 Frequency: 50 Hz Number of Poles: 2 Propeller Speed: 69 rpm Reduction ratio: 42:1 Frequency: 50 Hz Number of Poles: 2 Propeller Speed: 69 rpm			1
50	680 19 16	(Ex)	Shaft unit Reduction ratio: 49,23:1 Frequency: 60 Hz Number of Poles: 2 Propeller Speed: 71 rpm Reduction ratio: 49,23:1 Frequency: 60 Hz Number of Poles: 2 Propeller Speed: 72 rpm			1
52	604 88 00		Bearing holder Bearing holder Leakage detector in the stator house: FLS Sealed stator housing Bearing holder Bearing holder Sealed stator housing Bearing holder *** For FD use only *** Water in oil supervision: KOD Sealed stator housing	1	1	
52	604 88 02		Bearing holder Bearing holder Water in oil supervision: CLS Sealed stator housing Bearing holder Leakage detector in the stator house: FLS Water in oil supervision: CLS Sealed stator housing	1		

Pos. No	Part. No	Type	Denomination	Qty/Version		
				010	020	090
52	604 88 01	(Ex)	Bearing holder			1
			Bearing holder Leakage detector in the stator house :FLS Sealed stator housing			
			Bearing holder Bearing holder Sealed stator housing			
53	690 86 00		Gear	1		1
			Reduction ratio: 36,39:1			
			Frequency: 50 Hz Number of Poles: 4 Propeller Speed: 41 rpm			
			Reduction ratio: 36,39:1			
			Frequency: 60 Hz Number of Poles: 4 Propeller Speed: 48 rpm			
			Reduction ratio: 49,23:1			
			Frequency: 60 Hz Number of Poles: 2 Propeller Speed: 71 rpm			
			Reduction ratio: 49,23:1			
			Frequency: 60 Hz Number of Poles: 2 Propeller Speed: 71 rpm			
			Reduction ratio: 40,81:1			
			Frequency: 50 Hz Number of Poles: 4 Propeller Speed: 36 rpm			
			Reduction ratio: 40,81:1			
			Frequency: 60 Hz Number of Poles: 4 Propeller Speed: 44 rpm			
53	690 86 01		Gear	1		1
			Reduction ratio: 44,96:1			
			Frequency: 60 Hz Number of Poles: 2 Propeller Speed: 79 rpm			
			Reduction ratio: 44,96:1			
			Frequency: 60 Hz Number of Poles: 2 Propeller Speed: 79 rpm			
			Reduction ratio: 31,04:1			
			Frequency: 50 Hz Number of Poles: 2 Propeller Speed: 96 rpm			
			Reduction ratio: 31,04:1			
			Frequency: 50 Hz Number of Poles: 2 Propeller Speed: 96 rpm			
			Reduction ratio: 36,96:1			
			Frequency: 50 Hz Number of Poles: 2 Propeller Speed: 80 rpm			
			Reduction ratio: 36,96:1			
			Frequency: 50 Hz Number of Poles: 2 Propeller Speed: 80 rpm			

4 List of Parts

Pos. No	Part. No	Type	Denomination	Qty/Version		
				010	020	090
53	690 86 01		Gear Reduction ratio: 44,96:1 Frequency: 60 Hz Number of Poles: 2 Propeller Speed: 79 rpm Reduction ratio: 44,96:1 Frequency: 60 Hz Number of Poles: 2 Propeller Speed: 79 rpm Reduction ratio: 31,04:1 Frequency: 50 Hz Number of Poles: 2 Propeller Speed: 96 rpm Reduction ratio: 31,04:1 Frequency: 50 Hz Number of Poles: 2 Propeller Speed: 96 rpm Reduction ratio: 36,96:1 Frequency: 50 Hz Number of Poles: 2 Propeller Speed: 80 rpm Reduction ratio: 36,96:1 Frequency: 50 Hz Number of Poles: 2 Propeller Speed: 80 rpm	1	1	1
53	690 86 01		Gear Reduction ratio: 44,96:1 Frequency: 60 Hz Number of Poles: 2 Propeller Speed: 79 rpm Reduction ratio: 44,96:1 Frequency: 60 Hz Number of Poles: 2 Propeller Speed: 79 rpm Reduction ratio: 31,04:1 Frequency: 50 Hz Number of Poles: 2 Propeller Speed: 96 rpm Reduction ratio: 31,04:1 Frequency: 50 Hz Number of Poles: 2 Propeller Speed: 96 rpm Reduction ratio: 36,96:1 Frequency: 50 Hz Number of Poles: 2 Propeller Speed: 80 rpm Reduction ratio: 36,96:1 Frequency: 50 Hz Number of Poles: 2 Propeller Speed: 80 rpm		1	
54	464 48 01		Shaft Reduction ratio: 36,39:1 Frequency: 50 Hz Number of Poles: 4 Propeller Speed: 41 rpm Reduction ratio: 36,39:1 Frequency: 60 Hz Number of Poles: 4 Propeller Speed: 48 rpm Reduction ratio: 31,04:1 Frequency: 50 Hz Number of Poles: 4 Propeller Speed: 47 rpm Reduction ratio: 31,04:1 Frequency: 60 Hz Number of Poles: 4 Propeller Speed: 57 rpm	1		1

Pos. No	Part. No	Type	Denomination	Qty/Version		
				010	020	090
54	464 48 02		Shaft Reduction ratio: 34,80:1 Frequency: 50 Hz Number of Poles: 4 Propeller Speed: 42 rpm Reduction ratio: 34,80:1 Frequency: 60 Hz Number of Poles: 4 Propeller Speed: 51 rpm Reduction ratio: 40,81:1 Frequency: 50 Hz Number of Poles: 4 Propeller Speed: 36 rpm Reduction ratio: 40,81:1 Frequency: 60 Hz Number of Poles: 4 Propeller Speed: 44 rpm	1		1
54	464 48 04		Shaft Reduction ratio: 42:1 Frequency: 50 Hz Number of Poles: 2 Propeller Speed: 69 rpm Reduction ratio: 42:1 Frequency: 50 Hz Number of Poles: 2 Propeller Speed: 69 rpm Reduction ratio: 49,23:1 Frequency: 60 Hz Number of Poles: 2 Propeller Speed: 71 rpm Reduction ratio: 49,23:1 Frequency: 60 Hz Number of Poles: 2 Propeller Speed: 71 rpm	1		1
54	464 48 06		Shaft Reduction ratio: 36,96:1 Frequency: 50 Hz Number of Poles: 2 Propeller Speed: 80 rpm Reduction ratio: 36,96:1 Frequency: 50 Hz Number of Poles: 2 Propeller Speed: 80 rpm		1	
54	464 48 00		Shaft Reduction ratio: 44,96:1 Frequency: 60 Hz Number of Poles: 2 Propeller Speed: 79 rpm Reduction ratio: 44,96:1 Frequency: 60 Hz Number of Poles: 2 Propeller Speed: 79 rpm		1	
54	464 48 01		Shaft Reduction ratio: 36,39:1 Frequency: 50 Hz Number of Poles: 4 Propeller Speed: 41 rpm Reduction ratio: 36,39:1 Frequency: 60 Hz Number of Poles: 4 Propeller Speed: 48 rpm Reduction ratio: 31,04:1 Frequency: 50 Hz Number of Poles: 4 Propeller Speed: 47 rpm Reduction ratio: 31,04:1 Frequency: 60 Hz Number of Poles: 4 Propeller Speed: 57 rpm		1	

Pos. No	Part. No	Type	Denomination	Qty/Version		
				010	020	090
55	464 49 01		Gear Reduction ratio: 36,39:1 Frequency: 50 Hz Number of Poles: 4 Propeller Speed: 41 rpm Reduction ratio: 36,39:1 Frequency: 60 Hz Number of Poles: 4 Propeller Speed: 48 rpm Reduction ratio: 31,04:1 Frequency: 50 Hz Number of Poles: 4 Propeller Speed: 47 rpm Reduction ratio: 31,04:1 Frequency: 60 Hz Number of Poles: 4 Propeller Speed: 57 rpm	1		1
55	464 49 02		Gear Reduction ratio: 34,80:1 Frequency: 50 Hz Number of Poles: 4 Propeller Speed: 42 rpm Reduction ratio: 34,80:1 Frequency: 60 Hz Number of Poles: 4 Propeller Speed: 51 rpm Reduction ratio: 40,81:1 Frequency: 50 Hz Number of Poles: 4 Propeller Speed: 36 rpm Reduction ratio: 40,81:1 Frequency: 60 Hz Number of Poles: 4 Propeller Speed: 44 rpm	1		1
55	464 49 04		Gear Reduction ratio: 42:1 Frequency: 50 Hz Number of Poles: 2 Propeller Speed: 69 rpm Reduction ratio: 42:1 Frequency: 50 Hz Number of Poles: 2 Propeller Speed: 69 rpm Reduction ratio: 49,23:1 Frequency: 60 Hz Number of Poles: 2 Propeller Speed: 71 rpm Reduction ratio: 49,23:1 Frequency: 60 Hz Number of Poles: 2 Propeller Speed: 71 rpm	1		1
55	464 49 06		Gear Reduction ratio: 36,96:1 Frequency: 50 Hz Number of Poles: 2 Propeller Speed: 80 rpm Reduction ratio: 36,96:1 Frequency: 50 Hz Number of Poles: 2 Propeller Speed: 80 rpm		1	
55	464 49 00		Gear Reduction ratio: 44,96:1 Frequency: 60 Hz Number of Poles: 2 Propeller Speed: 79 rpm Reduction ratio: 44,96:1 Frequency: 60 Hz Number of Poles: 2 Propeller Speed: 79 rpm		1	

Pos. No	Part. No	Type	Denomination	Qty/Version		
				010	020	090
55	464 49 01		Gear Reduction ratio: 36,39:1 Frequency: 50 Hz Number of Poles: 4 Propeller Speed: 41 rpm Reduction ratio: 36,39:1 Frequency: 60 Hz Number of Poles: 4 Propeller Speed: 48 rpm Reduction ratio: 31,04:1 Frequency: 50 Hz Number of Poles: 4 Propeller Speed: 47 rpm Reduction ratio: 31,04:1 Frequency: 60 Hz Number of Poles: 4 Propeller Speed: 57 rpm		1	
56	464 51 06	(Ex)	Gear housing	1	1	1
57	416 94 00		Inspection screw	1	1	1
58	428 22 17		Inspection screw BRASS	4	4	4
60	464 61 01		Ring	1	1	1
61	775 80 01		Supporting washer	1	1	1
62	701 45 00		Shaft	1	1	1
63	493 97 00		Ring	1	1	1
64	456 71 00		Compression spring	12	12	12
65	464 59 00		Washer 63X104X1.5	1	1	1
66	496 04 00		Oil housing	1	1	1
67	382 83 00		Wear protection NBR-A2	1	1	1
68	384 03 10		Mechanical seal WCCR/WCCR FPM Parts for IECEX Mechanical Seals Material outer: Cemented carbide (WCCR) - Cemented carbide (WCCR) IECEX Gearbox seal: Lip seal NBR Stator housing seal: 2x Lip seal FPM Parts for FM Mechanical Seals Material outer: Cemented carbide (WCCR) - Cemented carbide (WCCR) FM Gearbox seal: Lip seal NBR Stator housing seal: 2x Lip seal FPM Parts for EN Mechanical Seals Material outer: Cemented carbide (WCCR) - Cemented carbide (WCCR) EN Gearbox seal: Lip seal NBR Stator housing seal: 2x Lip seal FPM	1	1	

4 List of Parts

Pos. No	Part. No	Type	Denomination	Qty/Version		
				010	020	090
68	384 03 10		Mechanical seal WCCR/WCCR FPM Parts for IECEX Mechanical Seals Material outer: Cemented carbide (WCCR) - Cemented carbide (WCCR) IECEX Gearbox seal: Lip seal NBR Stator housing seal: 2x Lip seal FPM Parts for FM Mechanical Seals Material outer: Cemented carbide (WCCR) - Cemented carbide (WCCR) FM Gearbox seal: Lip seal NBR Stator housing seal: 2x Lip seal FPM Parts for EN Mechanical Seals Material outer: Cemented carbide (WCCR) - Cemented carbide (WCCR) EN Gearbox seal: Lip seal NBR Stator housing seal: 2x Lip seal FPM			1
75	549 09 00		Propeller blade OD: 2500mm	2		2
75	549 09 01		Propeller blade OD: 2200mm	2		2
75	549 09 02		Propeller blade OD: 2000mm	2		2
75	549 09 03		Propeller blade OD: 1800mm	2		2
75	549 09 04		Propeller blade OD: 1700mm	2		2
79	777 90 11		Propeller hub Coating: Std Thickness = min 120 micrometer M0700.00.0004	1		1
79	777 90 12		Propeller hub Coating: Spec Thickness = 360 - 450 micrometer M0700.00.0008	1		1
79	777 90 13		Propeller hub Coating: MBBR Thickness = 450 - 550 micrometer M0700.00.0011	1		1
79	777 90 10		Propeller hub Coating: Primer M0700.00.0002	1		1

Pos. No	Part. No	Type	Denomination	Qty/Version		
				010	020	090
80	83 42 65		Terminal block 600V/20A UL Power cable x 1 SUBCAB 4G4+2x1,5 20 - 22mm L= 10m Max 750V With cable handling kit Power cable x 1 SUBCAB 4G4+2x1,5 20 - 22mm L= 16m Max 750V With cable handling kit Power cable x 1 SUBCAB 4G4+2x1,5 20 - 22mm L= 16m Max 750V Without cable handling kit Test cable SUBCAB 4G2,5+2x1,5 20 - 23mm L= 1,50m Test cable Max 750V Without cable handling kit Power cable x 1 SUBCAB 7G2,5+2x1,5 20 - 22mm L= 10m Max 750V With cable handling kit Power cable x 1 SUBCAB 7G2,5+2x1,5 20 - 22mm L= 20m Max 750V With cable handling kit Power cable x 1 SUBCAB 4G2,5+2x1,5 17 - 18mm L= 20m Max 750V With cable handling kit Power cable x 1 SUBCAB S3x2,5+3x2,5/3+S(4x0,5) 18 - 20mm L= 20m Max 1000V Without cable handling kit Power cable x 1 SUBCAB 4G6+2x1,5 24 - 26mm L= 16m Max 750V Without cable handling kit Power cable x 1 SUBCAB 4G4+2x1,5 20 - 22mm L= 20m Max 750V With cable handling kit Power cable x 1 SUBCAB 4G4+2x1,5 20 - 22mm L= 10m Max 750V Without cable handling kit Power cable x 1 SUBCAB 4G4+2x1,5 20 - 22mm L= 20m Max 750V Without cable handling kit Power cable x 1 SUBCAB S3x2,5+3x2,5/3+S(4x0,5) 18 - 20mm L= 10m Max 1000V Without cable handling kit Power cable x 1 SUBCAB 4G2,5+2x1,5 17 - 18mm L= 10m Max 750V With cable handling kit Power cable x 1 SUBCAB 4G2,5+2x1,5 17 - 18mm L= 20m Max 750V Without cable handling kit Power cable x 1 SUBCAB 7G2,5+2x1,5 20 - 22mm L= 20m	2		2

4 List of Parts

Pos. No	Part. No	Type	Denomination	Qty/Version		
				010	020	090
80	83 42 67		<p>Max 750V Without cable handling kit</p> <p>Power cable x 1 SUBCAB S3x2,5+3x2,5/3+S(4x0,5) 18 - 20mm L= 10m Max 1000V With cable handling kit</p> <p>Power cable x 1 SUBCAB S3x2,5+3x2,5/3+S(4x0,5) 18 - 20mm L= 20m Max 1000V With cable handling kit</p> <p>Power cable x 1 SUBCAB 4G6+2x1,5 24 - 26mm L= 16m Max 750V With cable handling kit</p> <p>Test cable SUBCAB 4G2,5+2x1,5 17 - 20mm L= 1,50m Test cable Max 750V Without cable handling kit</p> <p>Power cable x 1 SUBCAB 4G2,5+2x1,5 17 - 18mm L= 10m Max 750V Without cable handling kit</p> <p>Power cable x 1 SUBCAB 7G2,5+2x1,5 20 - 22mm L= 10m Max 750V Without cable handling kit</p> <p>Terminal block 600V/20A UL</p> <p>Test cable SUBCAB 4G2,5+2x1,5 20 - 23mm L= 1,50m Test cable Max 750V Without cable handling kit</p> <p>Power cable x 1 SUBCAB 4G2,5+2x1,5 17 - 18mm L= 20m Max 750V With cable handling kit</p> <p>Power cable x 1 SUBCAB 4G2,5+2x1,5 17 - 18mm L= 10m Max 750V With cable handling kit</p> <p>Power cable x 1 SUBCAB 4G2,5+2x1,5 17 - 18mm L= 20m Max 750V Without cable handling kit</p> <p>Test cable SUBCAB 4G2,5+2x1,5 17 - 20mm L= 1,50m Test cable Max 750V Without cable handling kit</p> <p>Power cable x 1 SUBCAB 4G2,5+2x1,5 17 - 18mm L= 10m Max 750V Without cable handling kit</p>	3		3

Pos. No	Part. No	Type	Denomination	Qty/Version		
				010	020	090
80	85 08 73		Terminal block Power cable x 1 SUBCAB S3x2,5+3x2,5/3+S(4x0,5) 18 - 20mm L= 20m Max 1000V With cable handling kit Power cable x 1 SUBCAB S3x2,5+3x2,5/3+S(4x0,5) 18 - 20mm L= 10m Max 1000V Without cable handling kit Power cable x 1 SUBCAB 4G4+2x1,5 20 - 22mm L= 20m Max 750V With cable handling kit Power cable x 1 SUBCAB 4G4+2x1,5 20 - 22mm L= 16m Max 750V With cable handling kit Power cable x 1 SUBCAB S3x2,5+3x2,5/3+S(4x0,5) 18 - 20mm L= 10m Max 1000V With cable handling kit Power cable x 1 SUBCAB 4G4+2x1,5 20 - 22mm L= 16m Max 750V Without cable handling kit Power cable x 1 SUBCAB 4G4+2x1,5 20 - 22mm L= 20m Max 750V Without cable handling kit Power cable x 1 SUBCAB 4G6+2x1,5 24 - 26mm L= 16m Max 750V Without cable handling kit Power cable x 1 SUBCAB 4G6+2x1,5 24 - 26mm L= 16m Max 750V With cable handling kit Power cable x 1 SUBCAB 4G4+2x1,5 20 - 22mm L= 10m Max 750V With cable handling kit Power cable x 1 SUBCAB 4G4+2x1,5 20 - 22mm L= 10m Max 750V Without cable handling kit Power cable x 1 SUBCAB S3x2,5+3x2,5/3+S(4x0,5) 18 - 20mm L= 20m Max 1000V Without cable handling kit	3		3

Pos. No	Part. No	Type	Denomination	Qty/Version		
				010	020	090
80	83 42 65		Terminal block 600V/20A UL Power cable x 1 SUBCAB 4G4+2x1,5 20 - 22mm L= 10m Max 750V With cable handling kit Power cable x 1 SUBCAB 4G4+2x1,5 20 - 22mm L= 16m Max 750V With cable handling kit Power cable x 1 SUBCAB 4G4+2x1,5 20 - 22mm L= 16m Max 750V Without cable handling kit Test cable SUBCAB 4G2,5+2x1,5 20 - 23mm L= 1,50m Test cable Max 750V Without cable handling kit Power cable x 1 SUBCAB 7G2,5+2x1,5 20 - 22mm L= 10m Max 750V With cable handling kit Power cable x 1 SUBCAB 7G2,5+2x1,5 20 - 22mm L= 20m Max 750V With cable handling kit Power cable x 1 SUBCAB 4G2,5+2x1,5 17 - 18mm L= 20m Max 750V With cable handling kit Power cable x 1 SUBCAB S3x2,5+3x2,5/3+S(4x0,5) 18 - 20mm L= 20m Max 1000V Without cable handling kit Power cable x 1 SUBCAB 4G6+2x1,5 24 - 26mm L= 16m Max 750V Without cable handling kit Power cable x 1 SUBCAB 4G4+2x1,5 20 - 22mm L= 20m Max 750V With cable handling kit Power cable x 1 SUBCAB 4G4+2x1,5 20 - 22mm L= 10m Max 750V Without cable handling kit Power cable x 1 SUBCAB 4G4+2x1,5 20 - 22mm L= 20m Max 750V Without cable handling kit Power cable x 1 SUBCAB S3x2,5+3x2,5/3+S(4x0,5) 18 - 20mm L= 10m Max 1000V Without cable handling kit Power cable x 1 SUBCAB 4G2,5+2x1,5 17 - 18mm L= 10m Max 750V With cable handling kit Power cable x 1 SUBCAB 4G2,5+2x1,5 17 - 18mm L= 20m Max 750V Without cable handling kit Power cable x 1 SUBCAB 7G2,5+2x1,5 20 - 22mm L= 20m	8		8

Pos. No	Part. No	Type	Denomination	Qty/Version		
				010	020	090
			Max 750V Without cable handling kit Power cable x 1 SUBCAB S3x2,5+3x2,5/3+S(4x0,5) 18 - 20mm L= 10m Max 1000V With cable handling kit Power cable x 1 SUBCAB S3x2,5+3x2,5/3+S(4x0,5) 18 - 20mm L= 20m Max 1000V With cable handling kit Power cable x 1 SUBCAB 4G6+2x1,5 24 - 26mm L= 16m Max 750V With cable handling kit Test cable SUBCAB 4G2,5+2x1,5 17 - 20mm L= 1,50m Test cable Max 750V Without cable handling kit Power cable x 1 SUBCAB 4G2,5+2x1,5 17 - 18mm L= 10m Max 750V Without cable handling kit Power cable x 1 SUBCAB 7G2,5+2x1,5 20 - 22mm L= 10m Max 750V Without cable handling kit			

Pos. No	Part. No	Type	Denomination	Qty/Version		
				010	020	090
80	83 42 65		Terminal block 600V/20A UL Power cable x 1 SUBCAB 4G4+2x1,5 20 - 22mm L= 10m Max 750V With cable handling kit Power cable x 1 SUBCAB 4G4+2x1,5 20 - 22mm L= 16m Max 750V With cable handling kit Power cable x 1 SUBCAB 4G4+2x1,5 20 - 22mm L= 16m Max 750V Without cable handling kit Test cable SUBCAB 4G2,5+2x1,5 20 - 23mm L= 1,50m Test cable Max 750V Without cable handling kit Power cable x 1 SUBCAB 7G2,5+2x1,5 20 - 22mm L= 10m Max 750V With cable handling kit Power cable x 1 SUBCAB 7G2,5+2x1,5 20 - 22mm L= 20m Max 750V With cable handling kit Power cable x 1 SUBCAB 4G2,5+2x1,5 17 - 18mm L= 20m Max 750V With cable handling kit Power cable x 1 SUBCAB S3x2,5+3x2,5/3+S(4x0,5) 18 - 20mm L= 20m Max 1000V Without cable handling kit Power cable x 1 SUBCAB 4G6+2x1,5 24 - 26mm L= 16m Max 750V Without cable handling kit Power cable x 1 SUBCAB 4G4+2x1,5 20 - 22mm L= 20m Max 750V With cable handling kit Power cable x 1 SUBCAB 4G4+2x1,5 20 - 22mm L= 10m Max 750V Without cable handling kit Power cable x 1 SUBCAB 4G4+2x1,5 20 - 22mm L= 20m Max 750V Without cable handling kit Power cable x 1 SUBCAB S3x2,5+3x2,5/3+S(4x0,5) 18 - 20mm L= 10m Max 1000V Without cable handling kit Power cable x 1 SUBCAB 4G2,5+2x1,5 17 - 18mm L= 10m Max 750V With cable handling kit Power cable x 1 SUBCAB 4G2,5+2x1,5 17 - 18mm L= 20m Max 750V Without cable handling kit Power cable x 1 SUBCAB 7G2,5+2x1,5 20 - 22mm L= 20m	4		4

Pos. No	Part. No	Type	Denomination	Qty/Version		
				010	020	090
81	83 45 59		<p>Max 750V Without cable handling kit</p> <p>Power cable x 1 SUBCAB S3x2,5+3x2,5/3+S(4x0,5) 18 - 20mm L= 10m Max 1000V With cable handling kit</p> <p>Power cable x 1 SUBCAB S3x2,5+3x2,5/3+S(4x0,5) 18 - 20mm L= 20m Max 1000V With cable handling kit</p> <p>Power cable x 1 SUBCAB 4G6+2x1,5 24 - 26mm L= 16m Max 750V With cable handling kit</p> <p>Test cable SUBCAB 4G2,5+2x1,5 17 - 20mm L= 1,50m Test cable Max 750V Without cable handling kit</p> <p>Power cable x 1 SUBCAB 4G2,5+2x1,5 17 - 18mm L= 10m Max 750V Without cable handling kit</p> <p>Power cable x 1 SUBCAB 7G2,5+2x1,5 20 - 22mm L= 10m Max 750V Without cable handling kit</p>	2		2

Pos. No	Part. No	Type	Denomination	Qty/Version		
				010	020	090
82	83 43 58		Cable lug UL/CSA 1.04-2.62 MM2 M6 Test cable SUBCAB 4G2,5+2x1,5 20 - 23mm L= 1,50m Test cable Max 750V Without cable handling kit Power cable x 1 SUBCAB 7G2,5+2x1,5 20 - 22mm L= 10m Max 750V With cable handling kit Power cable x 1 SUBCAB 7G2,5+2x1,5 20 - 22mm L= 20m Max 750V With cable handling kit Power cable x 1 SUBCAB 4G2,5+2x1,5 17 - 18mm L= 20m Max 750V With cable handling kit Power cable x 1 SUBCAB 4G2,5+2x1,5 17 - 18mm L= 10m Max 750V With cable handling kit Power cable x 1 SUBCAB 4G2,5+2x1,5 17 - 18mm L= 20m Max 750V Without cable handling kit Power cable x 1 SUBCAB 7G2,5+2x1,5 20 - 22mm L= 20m Max 750V Without cable handling kit Test cable SUBCAB 4G2,5+2x1,5 17 - 20mm L= 1,50m Test cable Max 750V Without cable handling kit Power cable x 1 SUBCAB 4G2,5+2x1,5 17 - 18mm L= 10m Max 750V Without cable handling kit Power cable x 1 SUBCAB 7G2,5+2x1,5 20 - 22mm L= 10m Max 750V Without cable handling kit	1		1

Pos. No	Part. No	Type	Denomination	Qty/Version		
				010	020	090
82	85 10 24		<p>Cable lug</p> <p>Power cable x 1 SUBCAB S3x2,5+3x2,5/3+S(4x0,5) 18 - 20mm L= 20m Max 1000V With cable handling kit</p> <p>Power cable x 1 SUBCAB S3x2,5+3x2,5/3+S(4x0,5) 18 - 20mm L= 10m Max 1000V Without cable handling kit</p> <p>Power cable x 1 SUBCAB 4G4+2x1,5 20 - 22mm L= 20m Max 750V With cable handling kit</p> <p>Power cable x 1 SUBCAB 4G4+2x1,5 20 - 22mm L= 16m Max 750V With cable handling kit</p> <p>Power cable x 1 SUBCAB S3x2,5+3x2,5/3+S(4x0,5) 18 - 20mm L= 10m Max 1000V With cable handling kit</p> <p>Power cable x 1 SUBCAB 4G4+2x1,5 20 - 22mm L= 16m Max 750V Without cable handling kit</p> <p>Power cable x 1 SUBCAB 4G4+2x1,5 20 - 22mm L= 20m Max 750V Without cable handling kit</p> <p>Power cable x 1 SUBCAB 4G6+2x1,5 24 - 26mm L= 16m Max 750V Without cable handling kit</p> <p>Power cable x 1 SUBCAB 4G6+2x1,5 24 - 26mm L= 16m Max 750V With cable handling kit</p> <p>Power cable x 1 SUBCAB 4G4+2x1,5 20 - 22mm L= 10m Max 750V With cable handling kit</p> <p>Power cable x 1 SUBCAB 4G4+2x1,5 20 - 22mm L= 10m Max 750V Without cable handling kit</p> <p>Power cable x 1 SUBCAB S3x2,5+3x2,5/3+S(4x0,5) 18 - 20mm L= 20m Max 1000V Without cable handling kit</p>	1	1	1

Pos. No	Part. No	Type	Denomination	Qty/Version		
				010	020	090
82	85 10 24		<p>Cable lug</p> <p>Power cable x 1 SUBCAB S3x2,5+3x2,5/3+S(4x0,5) 18 - 20mm L= 20m Max 1000V With cable handling kit</p> <p>Power cable x 1 SUBCAB S3x2,5+3x2,5/3+S(4x0,5) 18 - 20mm L= 10m Max 1000V Without cable handling kit</p> <p>Power cable x 1 SUBCAB 4G4+2x1,5 20 - 22mm L= 20m Max 750V With cable handling kit</p> <p>Power cable x 1 SUBCAB 4G4+2x1,5 20 - 22mm L= 16m Max 750V With cable handling kit</p> <p>Power cable x 1 SUBCAB S3x2,5+3x2,5/3+S(4x0,5) 18 - 20mm L= 10m Max 1000V With cable handling kit</p> <p>Power cable x 1 SUBCAB 4G4+2x1,5 20 - 22mm L= 16m Max 750V Without cable handling kit</p> <p>Power cable x 1 SUBCAB 4G4+2x1,5 20 - 22mm L= 20m Max 750V Without cable handling kit</p> <p>Power cable x 1 SUBCAB 4G6+2x1,5 24 - 26mm L= 16m Max 750V Without cable handling kit</p> <p>Power cable x 1 SUBCAB 4G6+2x1,5 24 - 26mm L= 16m Max 750V With cable handling kit</p> <p>Power cable x 1 SUBCAB 4G4+2x1,5 20 - 22mm L= 10m Max 750V With cable handling kit</p> <p>Power cable x 1 SUBCAB 4G4+2x1,5 20 - 22mm L= 10m Max 750V Without cable handling kit</p> <p>Power cable x 1 SUBCAB S3x2,5+3x2,5/3+S(4x0,5) 18 - 20mm L= 20m Max 1000V Without cable handling kit</p>	1		1

Pos. No	Part. No	Type	Denomination	Qty/Version		
				010	020	090
82	83 42 62		Closed-end splice 0.33-0.82 (AWG 22-18) Power cable x 1 SUBCAB S3x2,5+3x2,5/3+S(4x0,5) 18 - 20mm L= 20m Max 1000V With cable handling kit Power cable x 1 SUBCAB S3x2,5+3x2,5/3+S(4x0,5) 18 - 20mm L= 10m Max 1000V Without cable handling kit Power cable x 1 SUBCAB S3x2,5+3x2,5/3+S(4x0,5) 18 - 20mm L= 10m Max 1000V With cable handling kit Power cable x 1 SUBCAB S3x2,5+3x2,5/3+S(4x0,5) 18 - 20mm L= 20m Max 1000V Without cable handling kit	4		4
82	83 43 62		Cable lug UL/CSA 0.50-1.65 MM2 M6 Power cable x 1 SUBCAB S3x2,5+3x2,5/3+S(4x0,5) 18 - 20mm L= 20m Max 1000V With cable handling kit Power cable x 1 SUBCAB S3x2,5+3x2,5/3+S(4x0,5) 18 - 20mm L= 10m Max 1000V Without cable handling kit Power cable x 1 SUBCAB S3x2,5+3x2,5/3+S(4x0,5) 18 - 20mm L= 10m Max 1000V With cable handling kit Power cable x 1 SUBCAB S3x2,5+3x2,5/3+S(4x0,5) 18 - 20mm L= 20m Max 1000V Without cable handling kit	1		1
82	83 43 62		Cable lug UL/CSA 0.50-1.65 MM2 M6 Power cable x 1 SUBCAB S3x2,5+3x2,5/3+S(4x0,5) 18 - 20mm L= 20m Max 1000V With cable handling kit Power cable x 1 SUBCAB S3x2,5+3x2,5/3+S(4x0,5) 18 - 20mm L= 10m Max 1000V Without cable handling kit Power cable x 1 SUBCAB S3x2,5+3x2,5/3+S(4x0,5) 18 - 20mm L= 10m Max 1000V With cable handling kit Power cable x 1 SUBCAB S3x2,5+3x2,5/3+S(4x0,5) 18 - 20mm L= 20m Max 1000V Without cable handling kit	1	1	1

Pos. No	Part. No	Type	Denomination	Qty/Version		
				010	020	090
82	83 43 58		Cable lug UL/CSA 1.04-2.62 MM2 M6 Test cable SUBCAB 4G2,5+2x1,5 20 - 23mm L= 1,50m Test cable Max 750V Without cable handling kit Power cable x 1 SUBCAB 7G2,5+2x1,5 20 - 22mm L= 10m Max 750V With cable handling kit Power cable x 1 SUBCAB 7G2,5+2x1,5 20 - 22mm L= 20m Max 750V With cable handling kit Power cable x 1 SUBCAB 4G2,5+2x1,5 17 - 18mm L= 20m Max 750V With cable handling kit Power cable x 1 SUBCAB 4G2,5+2x1,5 17 - 18mm L= 10m Max 750V With cable handling kit Power cable x 1 SUBCAB 4G2,5+2x1,5 17 - 18mm L= 20m Max 750V Without cable handling kit Power cable x 1 SUBCAB 7G2,5+2x1,5 20 - 22mm L= 20m Max 750V Without cable handling kit Test cable SUBCAB 4G2,5+2x1,5 17 - 20mm L= 1,50m Test cable Max 750V Without cable handling kit Power cable x 1 SUBCAB 4G2,5+2x1,5 17 - 18mm L= 10m Max 750V Without cable handling kit Power cable x 1 SUBCAB 7G2,5+2x1,5 20 - 22mm L= 10m Max 750V Without cable handling kit	1	1	1
83	83 44 24		Closed-end splice 3-6 (AWG 12-10) Bearing holder Water in oil supervision: CLS Sealed stator housing Bearing holder Leakage detector in the stator house: FLS Sealed stator housing Bearing holder Leakage detector in the stator house: FLS Water in oil supervision: CLS Sealed stator housing	3		3
83	83 44 24		Closed-end splice 3-6 (AWG 12-10) Bearing holder Water in oil supervision: CLS Sealed stator housing Bearing holder Leakage detector in the stator house: FLS Sealed stator housing Bearing holder Leakage detector in the stator house: FLS Water in oil supervision: CLS Sealed stator housing	1		

Pos. No	Part. No	Type	Denomination	Qty/Version		
				010	020	090
83	83 44 23		Closed-end splice 4.0-9.0 (AWG 8) Power cable x 1 SUBCAB S3x6+3x6/3+S(4x0,5) 20 - 22mm L= 10m Max 1000V Without cable handling kit Power cable x 1 SUBCAB S3x6+3x6/3+S(4x0,5) 20 - 22mm L= 20m Max 1000V Without cable handling kit Power cable x 1 SUBCAB 4G4+2x1,5 20 - 22mm L= 10m Max 750V Without cable handling kit Power cable x 1 SUBCAB 4G4+2x1,5 20 - 22mm L= 20m Max 750V Without cable handling kit		4	
84	83 44 23		Closed-end splice 4.0-9.0 (AWG 8) Stator 3-phase 60 Hz 4-poles 440V-460V YSER 220V-230V Y// P2=6,30kW/8,40hp Max ambient temperature 40 DC Thermal contact 125 DC	1		1

Pos. No	Part. No	Type	Denomination	Qty/Version		
				010	020	090
84	83 44 24		Closed-end splice 3-6 (AWG 12-10) Power cable x 1 SUBCAB 4G4+2x1,5 20 - 22mm L= 10m Max 750V With cable handling kit Power cable x 1 SUBCAB 4G4+2x1,5 20 - 22mm L= 16m Max 750V With cable handling kit Power cable x 1 SUBCAB 4G4+2x1,5 20 - 22mm L= 16m Max 750V Without cable handling kit Test cable SUBCAB 4G2,5+2x1,5 20 - 23mm L= 1,50m Test cable Max 750V Without cable handling kit Power cable x 1 SUBCAB 7G2,5+2x1,5 20 - 22mm L= 10m Max 750V With cable handling kit Power cable x 1 SUBCAB 7G2,5+2x1,5 20 - 22mm L= 20m Max 750V With cable handling kit Power cable x 1 SUBCAB 4G2,5+2x1,5 17 - 18mm L= 20m Max 750V With cable handling kit Power cable x 1 SUBCAB 4G6+2x1,5 24 - 26mm L= 16m Max 750V Without cable handling kit Power cable x 1 SUBCAB 4G4+2x1,5 20 - 22mm L= 20m Max 750V With cable handling kit Power cable x 1 SUBCAB 4G4+2x1,5 20 - 22mm L= 10m Max 750V Without cable handling kit Power cable x 1 SUBCAB 4G4+2x1,5 20 - 22mm L= 20m Max 750V Without cable handling kit Power cable x 1 SUBCAB 4G2,5+2x1,5 17 - 18mm L= 10m Max 750V With cable handling kit Power cable x 1 SUBCAB 4G2,5+2x1,5 17 - 18mm L= 20m Max 750V Without cable handling kit Power cable x 1 SUBCAB 7G2,5+2x1,5 20 - 22mm L= 20m Max 750V Without cable handling kit Power cable x 1 SUBCAB 4G6+2x1,5 24 - 26mm L= 16m Max 750V With cable handling kit Test cable SUBCAB 4G2,5+2x1,5 17 - 20mm L= 1,50m Test cable Max 750V Without cable handling kit	2		2

Pos. No	Part. No	Type	Denomination	Qty/Version		
				010	020	090
			Power cable x 1 SUBCAB 4G2,5+2x1,5 17 - 18mm L= 10m Max 750V Without cable handling kit			
			Power cable x 1 SUBCAB 7G2,5+2x1,5 20 - 22mm L= 10m Max 750V Without cable handling kit			

Pos. No	Part. No	Type	Denomination	Qty/Version		
				010	020	090
84	83 44 24		Closed-end splice 3-6 (AWG 12-10) Power cable x 1 SUBCAB 4G4+2x1,5 20 - 22mm L= 10m Max 750V With cable handling kit Power cable x 1 SUBCAB 4G4+2x1,5 20 - 22mm L= 16m Max 750V With cable handling kit Power cable x 1 SUBCAB 4G4+2x1,5 20 - 22mm L= 16m Max 750V Without cable handling kit Test cable SUBCAB 4G2,5+2x1,5 20 - 23mm L= 1,50m Test cable Max 750V Without cable handling kit Power cable x 1 SUBCAB 7G2,5+2x1,5 20 - 22mm L= 10m Max 750V With cable handling kit Power cable x 1 SUBCAB 7G2,5+2x1,5 20 - 22mm L= 20m Max 750V With cable handling kit Power cable x 1 SUBCAB 4G2,5+2x1,5 17 - 18mm L= 20m Max 750V With cable handling kit Power cable x 1 SUBCAB 4G6+2x1,5 24 - 26mm L= 16m Max 750V Without cable handling kit Power cable x 1 SUBCAB 4G4+2x1,5 20 - 22mm L= 20m Max 750V With cable handling kit Power cable x 1 SUBCAB 4G4+2x1,5 20 - 22mm L= 10m Max 750V Without cable handling kit Power cable x 1 SUBCAB 4G4+2x1,5 20 - 22mm L= 20m Max 750V Without cable handling kit Power cable x 1 SUBCAB 4G2,5+2x1,5 17 - 18mm L= 10m Max 750V With cable handling kit Power cable x 1 SUBCAB 4G2,5+2x1,5 17 - 18mm L= 20m Max 750V Without cable handling kit Power cable x 1 SUBCAB 7G2,5+2x1,5 20 - 22mm L= 20m Max 750V Without cable handling kit Power cable x 1 SUBCAB 4G6+2x1,5 24 - 26mm L= 16m Max 750V With cable handling kit Test cable SUBCAB 4G2,5+2x1,5 17 - 20mm L= 1,50m Test cable Max 750V Without cable handling kit	2	2	2

Pos. No	Part. No	Type	Denomination	Qty/Version		
				010	020	090
84	83 42 62		Closed-end splice 0.33-0.82 (AWG 22-18)		4	
			Power cable x 1 SUBCAB 4G2,5+2x1,5 17 - 18mm L= 10m Max 750V Without cable handling kit			
			Power cable x 1 SUBCAB 7G2,5+2x1,5 20 - 22mm L= 10m Max 750V Without cable handling kit			
			Power cable x 1 SUBCAB S3x6+3x6/3+S(4x0,5) 20 - 22mm L= 10m Max 1000V Without cable handling kit			
			Power cable x 1 SUBCAB S3x6+3x6/3+S(4x0,5) 20 - 22mm L= 20m Max 1000V Without cable handling kit			
92	734 59 00		El.lead through unit 12X + 6X	1		1
94	443 50 00		Entrance cover	1		
			Cable entry: (20) - 23mm Cable entry: (23) - 26mm Cable entry: (17) - 20mm Seal sleeve material: NBR			
94	443 50 03	(Ex)	Entrance cover			1
			Cable entry: (17) - 20mm Seal sleeve mtrl: NBR Cable entry: (20) - 23mm Cable entry: (23) - 26mm			
96	82 40 81		Plain washer 32.5X52X2-A2-70	4		4
			Cable entry: (17) - 20mm Seal sleeve material: NBR			
96	82 40 82		Plain washer 34.5X52X2-A2-70	4		4
			Test cable SUBCAB 4G2,5+2x1,5 20 - 23mm L= 1,50m Test cable Max 750V Without cable handling kit Cable entry: (20) - 23mm Cable entry: (23) - 26mm			
96	82 42 42		Plain washer 24.5X35X2-A4-70		1	
97	84 18 01		Seal sleeve (17)-20 MM NBR	2		2
			Cable entry: (17) - 20mm Seal sleeve mtrl: NBR Test cable SUBCAB 4G2,5+2x1,5 20 - 23mm L= 1,50m Test cable Max 750V Without cable handling kit Test cable SUBCAB 4G2,5+2x1,5 17 - 20mm L= 1,50m Test cable Max 750V Without cable handling kit			
97	84 18 02		Seal sleeve (20)-23 MM NBR	2		2
			Cable entry: (20) - 23mm			
97	84 18 03		Seal sleeve (23)-26 MM NBR	2		2
			Cable entry: (23) - 26mm			
97	84 17 95		Seal sleeve (20)-22 MM NBR		1	
			Cable entry: (20) - 23mm			
97	84 17 93		Seal sleeve (16)-18 MM NBR		1	
			Cable entry: (16) - 18mm			
99	642 17 00		Entrance flange (20)-32 MM	1		
			Cable entry: (20) - 23mm Cable entry: (23) - 26mm Cable entry: (17) - 20mm Seal sleeve material: NBR			

Pos. No	Part. No	Type	Denomination	Qty/Version		
				010	020	090
99	597 87 00	(Ex)	Entrance flange ISO 228/1-G1, (17)-23 MM	1		1
99	678 58 22	(Ex)	Cable clip 20-(22) MM		1	
99	642 17 01	(Ex)	Entrance flange (14)-32 MM			1
			Cable entry: (20) - 23mm			
			Cable entry: (17) - 20mm Seal sleeve mtrl: NBR			
			Cable entry: (20) - 23mm			
			Cable entry: (23) - 26mm			
100	83 03 48		Hex.socket hd screw M12X40-A4-70	2		2
101	397 81 01	(Ex)	Gland screw Pr 37		1	
102	94 20 60		Motor cable subcab 4G4+2X1.5	*	*	*
			Power cable x 1 SUBCAB 4G4+2x1,5 20 - 22mm L= 20m Max 750V With cable handling kit			
			Power cable x 1 SUBCAB 4G4+2x1,5 20 - 22mm L= 16m Max 750V With cable handling kit			
			Power cable x 1 SUBCAB 4G4+2x1,5 20 - 22mm L= 16m Max 750V Without cable handling kit			
			Power cable x 1 SUBCAB 4G4+2x1,5 20 - 22mm L= 20m Max 750V Without cable handling kit			
			Power cable x 1 SUBCAB 4G4+2x1,5 20 - 22mm L= 10m Max 750V With cable handling kit			
			Power cable x 1 SUBCAB 4G4+2x1,5 20 - 22mm L= 10m Max 750V Without cable handling kit			
102	94 20 82		Motor cable subcab 7G2.5+2X1.5	*		*
			Power cable x 1 SUBCAB 7G2,5+2x1,5 20 - 22mm L= 10m Max 750V With cable handling kit			
			Power cable x 1 SUBCAB 7G2,5+2x1,5 20 - 22mm L= 20m Max 750V With cable handling kit			
			Power cable x 1 SUBCAB 7G2,5+2x1,5 20 - 22mm L= 10m Max 750V Without cable handling kit			
			Power cable x 1 SUBCAB 7G2,5+2x1,5 20 - 22mm L= 20m Max 750V Without cable handling kit			

Pos. No	Part. No	Type	Denomination	Qty/Version			
				010	020	090	
102	94 19 90		Motor cable subcab S3X2.5+3X2.5/3+S(4X0.5)	Power cable x 1 SUBCAB S3x2,5+3x2,5/3+S(4x0,5) 18 - 20mm L= 20m Max 1000V With cable handling kit Power cable x 1 SUBCAB S3x2,5+3x2,5/3+S(4x0,5) 18 - 20mm L= 10m Max 1000V Without cable handling kit Power cable x 1 SUBCAB S3x2,5+3x2,5/3+S(4x0,5) 18 - 20mm L= 10m Max 1000V With cable handling kit Power cable x 1 SUBCAB S3x2,5+3x2,5/3+S(4x0,5) 18 - 20mm L= 20m Max 1000V Without cable handling kit	*		*
102	94 20 56		Motor cable subcab 4G6+2X1.5	Power cable x 1 SUBCAB 4G6+2x1,5 24 - 26mm L= 16m Max 750V Without cable handling kit Power cable x 1 SUBCAB 4G6+2x1,5 24 - 26mm L= 16m Max 750V With cable handling kit	*		*
102	94 20 59		Motor cable subcab 4G2.5+2X1.5	Test cable SUBCAB 4G2,5+2x1,5 20 - 23mm L= 1,50m Test cable Max 750V Without cable handling kit Power cable x 1 SUBCAB 4G2,5+2x1,5 17 - 18mm L= 20m Max 750V With cable handling kit Power cable x 1 SUBCAB 4G2,5+2x1,5 17 - 18mm L= 10m Max 750V With cable handling kit Power cable x 1 SUBCAB 4G2,5+2x1,5 17 - 18mm L= 20m Max 750V Without cable handling kit Test cable SUBCAB 4G2,5+2x1,5 17 - 20mm L= 1,50m Test cable Max 750V Without cable handling kit Power cable x 1 SUBCAB 4G2,5+2x1,5 17 - 18mm L= 10m Max 750V Without cable handling kit	*	*	*
102	94 19 91		Motor cable subcab S3X6+3X6/3+S(4X0.5)	Power cable x 1 SUBCAB S3x6+3x6/3+S(4x0,5) 20 - 22mm L= 10m Max 1000V Without cable handling kit Power cable x 1 SUBCAB S3x6+3x6/3+S(4x0,5) 20 - 22mm L= 20m Max 1000V Without cable handling kit		*	
103	83 45 59		Cable tie 200X2.4 PA 6/6 -55+105		1	1	1

4 List of Parts

Pos. No	Part. No	Type	Denomination	Qty/Version		
				010	020	090
105	630 68 00	(Ex)	Data plate USE 6306801 AS SPARE PART	2	2	2
105	775 03 00		Connection plate	1	1	1
105	630 69 01	(Ex)	Certificate plate IECEX Parts for IECEX Mechanical Seals Material outer: Cemented carbide (WCCR) - Cemented carbide (WCCR) IECEX Gearbox seal: Lip seal NBR Stator housing seal: 2x Lip seal FPM			2
105	630 69 00	(Ex)	Certificate plate EN Parts for EN Mechanical Seals Material outer: Cemented carbide (WCCR) - Cemented carbide (WCCR) EN Gearbox seal: Lip seal NBR Stator housing seal: 2x Lip seal FPM			2
105	630 70 00	(Ex)	Certificate plate FM Parts for FM Mechanical Seals Material outer: Cemented carbide (WCCR) - Cemented carbide (WCCR) FM Gearbox seal: Lip seal NBR Stator housing seal: 2x Lip seal FPM			2
106	83 02 58		Hex.socket hd screw M5X12- A4-70			2
107	279 29 00	(Ex)	Earthing plate			1
108	838 12 00		Bending protection Power cable x 1 SUBCAB 4G2,5+2x1,5 17 - 18mm L= 10m Max 750V Without cable handling kit Power cable x 1 SUBCAB 4G2,5+2x1,5 17 - 18mm L= 20m Max 750V With cable handling kit Power cable x 1 SUBCAB 4G2,5+2x1,5 17 - 18mm L= 10m Max 750V With cable handling kit Power cable x 1 SUBCAB 4G2,5+2x1,5 17 - 18mm L= 20m Max 750V Without cable handling kit	1		1

Pos. No	Part. No	Type	Denomination	Qty/Version		
				010	020	090
108	838 12 01		Bending protection Power cable x 1 SUBCAB S3x2,5+3x2,5/3+S(4x0,5) 18 - 20mm L= 20m Max 1000V Without cable handling kit Power cable x 1 SUBCAB S3x2,5+3x2,5/3+S(4x0,5) 18 - 20mm L= 10m Max 1000V Without cable handling kit Power cable x 1 SUBCAB S3x2,5+3x2,5/3+S(4x0,5) 18 - 20mm L= 10m Max 1000V With cable handling kit Power cable x 1 SUBCAB S3x2,5+3x2,5/3+S(4x0,5) 18 - 20mm L= 20m Max 1000V With cable handling kit Test cable SUBCAB 4G2,5+2x1,5 17 - 20mm L= 1,50m Test cable Max 750V Without cable handling kit	1		1

Pos. No	Part. No	Type	Denomination	Qty/Version		
				010	020	090
108	838 12 02		Bending protection Power cable x 1 SUBCAB 4G4+2x1,5 20 - 22mm L= 10m Max 750V With cable handling kit Power cable x 1 SUBCAB 4G4+2x1,5 20 - 22mm L= 16m Max 750V With cable handling kit Power cable x 1 SUBCAB 4G4+2x1,5 20 - 22mm L= 16m Max 750V Without cable handling kit Test cable SUBCAB 4G2,5+2x1,5 20 - 23mm L= 1,50m Test cable Max 750V Without cable handling kit Power cable x 1 SUBCAB 7G2,5+2x1,5 20 - 22mm L= 10m Max 750V With cable handling kit Power cable x 1 SUBCAB 7G2,5+2x1,5 20 - 22mm L= 20m Max 750V With cable handling kit Power cable x 1 SUBCAB 4G4+2x1,5 20 - 22mm L= 20m Max 750V With cable handling kit Power cable x 1 SUBCAB 4G4+2x1,5 20 - 22mm L= 10m Max 750V Without cable handling kit Power cable x 1 SUBCAB 4G4+2x1,5 20 - 22mm L= 20m Max 750V Without cable handling kit Power cable x 1 SUBCAB 7G2,5+2x1,5 20 - 22mm L= 20m Max 750V Without cable handling kit Power cable x 1 SUBCAB 7G2,5+2x1,5 20 - 22mm L= 10m Max 750V Without cable handling kit		1	

Pos. No	Part. No	Type	Denomination	Qty/Version		
				010	020	090
109	846 46 00		Bracket Power cable x 1 SUBCAB 4G4+2x1,5 20 - 22mm L= 10m Max 750V With cable handling kit Power cable x 1 SUBCAB 4G4+2x1,5 20 - 22mm L= 16m Max 750V With cable handling kit Power cable x 1 SUBCAB 4G4+2x1,5 20 - 22mm L= 16m Max 750V Without cable handling kit Test cable SUBCAB 4G2,5+2x1,5 20 - 23mm L= 1,50m Test cable Max 750V Without cable handling kit Power cable x 1 SUBCAB 7G2,5+2x1,5 20 - 22mm L= 10m Max 750V With cable handling kit Power cable x 1 SUBCAB 7G2,5+2x1,5 20 - 22mm L= 20m Max 750V With cable handling kit Power cable x 1 SUBCAB 4G2,5+2x1,5 17 - 18mm L= 20m Max 750V With cable handling kit Power cable x 1 SUBCAB S3x2,5+3x2,5/3+S(4x0,5) 18 - 20mm L= 20m Max 1000V Without cable handling kit Power cable x 1 SUBCAB 4G6+2x1,5 24 - 26mm L= 16m Max 750V Without cable handling kit Power cable x 1 SUBCAB 4G4+2x1,5 20 - 22mm L= 20m Max 750V With cable handling kit Power cable x 1 SUBCAB 4G4+2x1,5 20 - 22mm L= 10m Max 750V Without cable handling kit Power cable x 1 SUBCAB 4G4+2x1,5 20 - 22mm L= 20m Max 750V Without cable handling kit Power cable x 1 SUBCAB S3x2,5+3x2,5/3+S(4x0,5) 18 - 20mm L= 10m Max 1000V Without cable handling kit Power cable x 1 SUBCAB 4G2,5+2x1,5 17 - 18mm L= 10m Max 750V With cable handling kit Power cable x 1 SUBCAB 4G2,5+2x1,5 17 - 18mm L= 20m Max 750V Without cable handling kit Power cable x 1 SUBCAB 7G2,5+2x1,5 20 - 22mm L= 20m	1		1

4 List of Parts

Pos. No	Part. No	Type	Denomination	Qty/Version		
				010	020	090
			Max 750V Without cable handling kit Power cable x 1 SUBCAB S3x2,5+3x2,5/3+S(4x0,5) 18 - 20mm L= 10m Max 1000V With cable handling kit Power cable x 1 SUBCAB S3x2,5+3x2,5/3+S(4x0,5) 18 - 20mm L= 20m Max 1000V With cable handling kit Power cable x 1 SUBCAB 4G6+2x1,5 24 - 26mm L= 16m Max 750V With cable handling kit Test cable SUBCAB 4G2,5+2x1,5 17 - 20mm L= 1,50m Test cable Max 750V Without cable handling kit Power cable x 1 SUBCAB 4G2,5+2x1,5 17 - 18mm L= 10m Max 750V Without cable handling kit Power cable x 1 SUBCAB 7G2,5+2x1,5 20 - 22mm L= 10m Max 750V Without cable handling kit			

Pos. No	Part. No	Type	Denomination	Qty/Version		
				010	020	090
109	846 46 00		Bracket Power cable x 1 SUBCAB 4G4+2x1,5 20 - 22mm L= 10m Max 750V With cable handling kit Power cable x 1 SUBCAB 4G4+2x1,5 20 - 22mm L= 16m Max 750V With cable handling kit Power cable x 1 SUBCAB 4G4+2x1,5 20 - 22mm L= 16m Max 750V Without cable handling kit Test cable SUBCAB 4G2,5+2x1,5 20 - 23mm L= 1,50m Test cable Max 750V Without cable handling kit Power cable x 1 SUBCAB 7G2,5+2x1,5 20 - 22mm L= 10m Max 750V With cable handling kit Power cable x 1 SUBCAB 7G2,5+2x1,5 20 - 22mm L= 20m Max 750V With cable handling kit Power cable x 1 SUBCAB 4G2,5+2x1,5 17 - 18mm L= 20m Max 750V With cable handling kit Power cable x 1 SUBCAB S3x2,5+3x2,5/3+S(4x0,5) 18 - 20mm L= 20m Max 1000V Without cable handling kit Power cable x 1 SUBCAB 4G6+2x1,5 24 - 26mm L= 16m Max 750V Without cable handling kit Power cable x 1 SUBCAB 4G4+2x1,5 20 - 22mm L= 20m Max 750V With cable handling kit Power cable x 1 SUBCAB 4G4+2x1,5 20 - 22mm L= 10m Max 750V Without cable handling kit Power cable x 1 SUBCAB 4G4+2x1,5 20 - 22mm L= 20m Max 750V Without cable handling kit Power cable x 1 SUBCAB S3x2,5+3x2,5/3+S(4x0,5) 18 - 20mm L= 10m Max 1000V Without cable handling kit Power cable x 1 SUBCAB 4G2,5+2x1,5 17 - 18mm L= 10m Max 750V With cable handling kit Power cable x 1 SUBCAB 4G2,5+2x1,5 17 - 18mm L= 20m Max 750V Without cable handling kit Power cable x 1 SUBCAB 7G2,5+2x1,5 20 - 22mm L= 20m	1	1	1

4 List of Parts

Pos. No	Part. No	Type	Denomination	Qty/Version		
				010	020	090
			Max 750V Without cable handling kit Power cable x 1 SUBCAB S3x2,5+3x2,5/3+S(4x0,5) 18 - 20mm L= 10m Max 1000V With cable handling kit Power cable x 1 SUBCAB S3x2,5+3x2,5/3+S(4x0,5) 18 - 20mm L= 20m Max 1000V With cable handling kit Power cable x 1 SUBCAB 4G6+2x1,5 24 - 26mm L= 16m Max 750V With cable handling kit Test cable SUBCAB 4G2,5+2x1,5 17 - 20mm L= 1,50m Test cable Max 750V Without cable handling kit Power cable x 1 SUBCAB 4G2,5+2x1,5 17 - 18mm L= 10m Max 750V Without cable handling kit Power cable x 1 SUBCAB 7G2,5+2x1,5 20 - 22mm L= 10m Max 750V Without cable handling kit			

Pos. No	Part. No	Type	Denomination	Qty/Version		
				010	020	090
110	846 65 00		Bracket Power cable x 1 SUBCAB 4G4+2x1,5 20 - 22mm L= 10m Max 750V With cable handling kit Power cable x 1 SUBCAB 4G4+2x1,5 20 - 22mm L= 16m Max 750V With cable handling kit Power cable x 1 SUBCAB 4G4+2x1,5 20 - 22mm L= 16m Max 750V Without cable handling kit Test cable SUBCAB 4G2,5+2x1,5 20 - 23mm L= 1,50m Test cable Max 750V Without cable handling kit Power cable x 1 SUBCAB 7G2,5+2x1,5 20 - 22mm L= 10m Max 750V With cable handling kit Power cable x 1 SUBCAB 7G2,5+2x1,5 20 - 22mm L= 20m Max 750V With cable handling kit Power cable x 1 SUBCAB 4G2,5+2x1,5 17 - 18mm L= 20m Max 750V With cable handling kit Power cable x 1 SUBCAB S3x2,5+3x2,5/3+S(4x0,5) 18 - 20mm L= 20m Max 1000V Without cable handling kit Power cable x 1 SUBCAB 4G6+2x1,5 24 - 26mm L= 16m Max 750V Without cable handling kit Power cable x 1 SUBCAB 4G4+2x1,5 20 - 22mm L= 20m Max 750V With cable handling kit Power cable x 1 SUBCAB 4G4+2x1,5 20 - 22mm L= 10m Max 750V Without cable handling kit Power cable x 1 SUBCAB 4G4+2x1,5 20 - 22mm L= 20m Max 750V Without cable handling kit Power cable x 1 SUBCAB S3x2,5+3x2,5/3+S(4x0,5) 18 - 20mm L= 10m Max 1000V Without cable handling kit Power cable x 1 SUBCAB 4G2,5+2x1,5 17 - 18mm L= 10m Max 750V With cable handling kit Power cable x 1 SUBCAB 4G2,5+2x1,5 17 - 18mm L= 20m Max 750V Without cable handling kit Power cable x 1 SUBCAB 7G2,5+2x1,5 20 - 22mm L= 20m	1		1

4 List of Parts

Pos. No	Part. No	Type	Denomination	Qty/Version		
				010	020	090
			Max 750V Without cable handling kit Power cable x 1 SUBCAB S3x2,5+3x2,5/3+S(4x0,5) 18 - 20mm L= 10m Max 1000V With cable handling kit Power cable x 1 SUBCAB S3x2,5+3x2,5/3+S(4x0,5) 18 - 20mm L= 20m Max 1000V With cable handling kit Power cable x 1 SUBCAB 4G6+2x1,5 24 - 26mm L= 16m Max 750V With cable handling kit Test cable SUBCAB 4G2,5+2x1,5 17 - 20mm L= 1,50m Test cable Max 750V Without cable handling kit Power cable x 1 SUBCAB 4G2,5+2x1,5 17 - 18mm L= 10m Max 750V Without cable handling kit Power cable x 1 SUBCAB 7G2,5+2x1,5 20 - 22mm L= 10m Max 750V Without cable handling kit			

Pos. No	Part. No	Type	Denomination	Qty/Version		
				010	020	090
110	846 65 00		Bracket Power cable x 1 SUBCAB 4G4+2x1,5 20 - 22mm L= 10m Max 750V With cable handling kit Power cable x 1 SUBCAB 4G4+2x1,5 20 - 22mm L= 16m Max 750V With cable handling kit Power cable x 1 SUBCAB 4G4+2x1,5 20 - 22mm L= 16m Max 750V Without cable handling kit Test cable SUBCAB 4G2,5+2x1,5 20 - 23mm L= 1,50m Test cable Max 750V Without cable handling kit Power cable x 1 SUBCAB 7G2,5+2x1,5 20 - 22mm L= 10m Max 750V With cable handling kit Power cable x 1 SUBCAB 7G2,5+2x1,5 20 - 22mm L= 20m Max 750V With cable handling kit Power cable x 1 SUBCAB 4G2,5+2x1,5 17 - 18mm L= 20m Max 750V With cable handling kit Power cable x 1 SUBCAB S3x2,5+3x2,5/3+S(4x0,5) 18 - 20mm L= 20m Max 1000V Without cable handling kit Power cable x 1 SUBCAB 4G6+2x1,5 24 - 26mm L= 16m Max 750V Without cable handling kit Power cable x 1 SUBCAB 4G4+2x1,5 20 - 22mm L= 20m Max 750V With cable handling kit Power cable x 1 SUBCAB 4G4+2x1,5 20 - 22mm L= 10m Max 750V Without cable handling kit Power cable x 1 SUBCAB 4G4+2x1,5 20 - 22mm L= 20m Max 750V Without cable handling kit Power cable x 1 SUBCAB S3x2,5+3x2,5/3+S(4x0,5) 18 - 20mm L= 10m Max 1000V Without cable handling kit Power cable x 1 SUBCAB 4G2,5+2x1,5 17 - 18mm L= 10m Max 750V With cable handling kit Power cable x 1 SUBCAB 4G2,5+2x1,5 17 - 18mm L= 20m Max 750V Without cable handling kit Power cable x 1 SUBCAB 7G2,5+2x1,5 20 - 22mm L= 20m	1	1	1

4 List of Parts

Pos. No	Part. No	Type	Denomination	Qty/Version		
				010	020	090
			Max 750V Without cable handling kit Power cable x 1 SUBCAB S3x2,5+3x2,5/3+S(4x0,5) 18 - 20mm L= 10m Max 1000V With cable handling kit Power cable x 1 SUBCAB S3x2,5+3x2,5/3+S(4x0,5) 18 - 20mm L= 20m Max 1000V With cable handling kit Power cable x 1 SUBCAB 4G6+2x1,5 24 - 26mm L= 16m Max 750V With cable handling kit Test cable SUBCAB 4G2,5+2x1,5 17 - 20mm L= 1,50m Test cable Max 750V Without cable handling kit Power cable x 1 SUBCAB 4G2,5+2x1,5 17 - 18mm L= 10m Max 750V Without cable handling kit Power cable x 1 SUBCAB 7G2,5+2x1,5 20 - 22mm L= 10m Max 750V Without cable handling kit			

Pos. No	Part. No	Type	Denomination	Qty/Version		
				010	020	090
111	83 04 45		<p>Hex.socket hd screw M8X35-A4-80</p> <p>Power cable x 1 SUBCAB 4G4+2x1,5 20 - 22mm L= 10m Max 750V With cable handling kit</p> <p>Power cable x 1 SUBCAB 4G4+2x1,5 20 - 22mm L= 16m Max 750V With cable handling kit</p> <p>Power cable x 1 SUBCAB 4G4+2x1,5 20 - 22mm L= 16m Max 750V Without cable handling kit</p> <p>Test cable SUBCAB 4G2,5+2x1,5 20 - 23mm L= 1,50m Test cable Max 750V Without cable handling kit</p> <p>Power cable x 1 SUBCAB 7G2,5+2x1,5 20 - 22mm L= 10m Max 750V With cable handling kit</p> <p>Power cable x 1 SUBCAB 7G2,5+2x1,5 20 - 22mm L= 20m Max 750V With cable handling kit</p> <p>Power cable x 1 SUBCAB 4G2,5+2x1,5 17 - 18mm L= 20m Max 750V With cable handling kit</p> <p>Power cable x 1 SUBCAB S3x2,5+3x2,5/3+S(4x0,5) 18 - 20mm L= 20m Max 1000V Without cable handling kit</p> <p>Power cable x 1 SUBCAB 4G6+2x1,5 24 - 26mm L= 16m Max 750V Without cable handling kit</p> <p>Power cable x 1 SUBCAB 4G4+2x1,5 20 - 22mm L= 20m Max 750V With cable handling kit</p> <p>Power cable x 1 SUBCAB 4G4+2x1,5 20 - 22mm L= 10m Max 750V Without cable handling kit</p> <p>Power cable x 1 SUBCAB 4G4+2x1,5 20 - 22mm L= 20m Max 750V Without cable handling kit</p> <p>Power cable x 1 SUBCAB S3x2,5+3x2,5/3+S(4x0,5) 18 - 20mm L= 10m Max 1000V Without cable handling kit</p> <p>Power cable x 1 SUBCAB 4G2,5+2x1,5 17 - 18mm L= 10m Max 750V With cable handling kit</p> <p>Power cable x 1 SUBCAB 4G2,5+2x1,5 17 - 18mm L= 20m Max 750V Without cable handling kit</p> <p>Power cable x 1 SUBCAB 7G2,5+2x1,5 20 - 22mm L= 20m</p>	2		2

4 List of Parts

Pos. No	Part. No	Type	Denomination	Qty/Version		
				010	020	090
			Max 750V Without cable handling kit Power cable x 1 SUBCAB S3x2,5+3x2,5/3+S(4x0,5) 18 - 20mm L= 10m Max 1000V With cable handling kit Power cable x 1 SUBCAB S3x2,5+3x2,5/3+S(4x0,5) 18 - 20mm L= 20m Max 1000V With cable handling kit Power cable x 1 SUBCAB 4G6+2x1,5 24 - 26mm L= 16m Max 750V With cable handling kit Test cable SUBCAB 4G2,5+2x1,5 17 - 20mm L= 1,50m Test cable Max 750V Without cable handling kit Power cable x 1 SUBCAB 4G2,5+2x1,5 17 - 18mm L= 10m Max 750V Without cable handling kit Power cable x 1 SUBCAB 7G2,5+2x1,5 20 - 22mm L= 10m Max 750V Without cable handling kit			

Pos. No	Part. No	Type	Denomination	Qty/Version		
				010	020	090
111	83 04 45		<p>Hex.socket hd screw M8X35-A4-80</p> <p>Power cable x 1 SUBCAB 4G4+2x1,5 20 - 22mm L= 10m Max 750V With cable handling kit</p> <p>Power cable x 1 SUBCAB 4G4+2x1,5 20 - 22mm L= 16m Max 750V With cable handling kit</p> <p>Power cable x 1 SUBCAB 4G4+2x1,5 20 - 22mm L= 16m Max 750V Without cable handling kit</p> <p>Test cable SUBCAB 4G2,5+2x1,5 20 - 23mm L= 1,50m Test cable Max 750V Without cable handling kit</p> <p>Power cable x 1 SUBCAB 7G2,5+2x1,5 20 - 22mm L= 10m Max 750V With cable handling kit</p> <p>Power cable x 1 SUBCAB 7G2,5+2x1,5 20 - 22mm L= 20m Max 750V With cable handling kit</p> <p>Power cable x 1 SUBCAB 4G2,5+2x1,5 17 - 18mm L= 20m Max 750V With cable handling kit</p> <p>Power cable x 1 SUBCAB S3x2,5+3x2,5/3+S(4x0,5) 18 - 20mm L= 20m Max 1000V Without cable handling kit</p> <p>Power cable x 1 SUBCAB 4G6+2x1,5 24 - 26mm L= 16m Max 750V Without cable handling kit</p> <p>Power cable x 1 SUBCAB 4G4+2x1,5 20 - 22mm L= 20m Max 750V With cable handling kit</p> <p>Power cable x 1 SUBCAB 4G4+2x1,5 20 - 22mm L= 10m Max 750V Without cable handling kit</p> <p>Power cable x 1 SUBCAB 4G4+2x1,5 20 - 22mm L= 20m Max 750V Without cable handling kit</p> <p>Power cable x 1 SUBCAB S3x2,5+3x2,5/3+S(4x0,5) 18 - 20mm L= 10m Max 1000V Without cable handling kit</p> <p>Power cable x 1 SUBCAB 4G2,5+2x1,5 17 - 18mm L= 10m Max 750V With cable handling kit</p> <p>Power cable x 1 SUBCAB 4G2,5+2x1,5 17 - 18mm L= 20m Max 750V Without cable handling kit</p> <p>Power cable x 1 SUBCAB 7G2,5+2x1,5 20 - 22mm L= 20m</p>	2	2	2

Pos. No	Part. No	Type	Denomination	Qty/Version		
				010	020	090
			Max 750V Without cable handling kit			
			Power cable x 1 SUBCAB S3x2,5+3x2,5/3+S(4x0,5) 18 - 20mm L= 10m Max 1000V With cable handling kit			
			Power cable x 1 SUBCAB S3x2,5+3x2,5/3+S(4x0,5) 18 - 20mm L= 20m Max 1000V With cable handling kit			
			Power cable x 1 SUBCAB 4G6+2x1,5 24 - 26mm L= 16m Max 750V With cable handling kit			
			Test cable SUBCAB 4G2,5+2x1,5 17 - 20mm L= 1,50m Test cable Max 750V Without cable handling kit			
			Power cable x 1 SUBCAB 4G2,5+2x1,5 17 - 18mm L= 10m Max 750V Without cable handling kit			
			Power cable x 1 SUBCAB 7G2,5+2x1,5 20 - 22mm L= 10m Max 750V Without cable handling kit			
112	504 78 05		Cable unit	1		
113	505 12 00		Leakage sensor (CLS30)	1		
114	731 64 00		Leakage sensor	1		1
115	504 78 09		Cable unit (FLS)	1		1
116	81 41 52		Hexagon head screw M12X20-A2-70	1		1
116	81 41 52		Hexagon head screw M12X20-A2-70	2		
117	83 97 48		Leakage sensor unit	1		

Pos. No	Part. No	Type	Denomination	Qty/Version		
				010	020	090
118	82 27 27		Lock nut M8-A4-70 Power cable x 1 SUBCAB 4G4+2x1,5 20 - 22mm L= 10m Max 750V With cable handling kit Power cable x 1 SUBCAB 4G4+2x1,5 20 - 22mm L= 16m Max 750V With cable handling kit Power cable x 1 SUBCAB 4G4+2x1,5 20 - 22mm L= 16m Max 750V Without cable handling kit Test cable SUBCAB 4G2,5+2x1,5 20 - 23mm L= 1,50m Test cable Max 750V Without cable handling kit Power cable x 1 SUBCAB 7G2,5+2x1,5 20 - 22mm L= 10m Max 750V With cable handling kit Power cable x 1 SUBCAB 7G2,5+2x1,5 20 - 22mm L= 20m Max 750V With cable handling kit Power cable x 1 SUBCAB 4G2,5+2x1,5 17 - 18mm L= 20m Max 750V With cable handling kit Power cable x 1 SUBCAB S3x2,5+3x2,5/3+S(4x0,5) 18 - 20mm L= 20m Max 1000V Without cable handling kit Power cable x 1 SUBCAB 4G6+2x1,5 24 - 26mm L= 16m Max 750V Without cable handling kit Power cable x 1 SUBCAB 4G4+2x1,5 20 - 22mm L= 20m Max 750V With cable handling kit Power cable x 1 SUBCAB 4G4+2x1,5 20 - 22mm L= 10m Max 750V Without cable handling kit Power cable x 1 SUBCAB 4G4+2x1,5 20 - 22mm L= 20m Max 750V Without cable handling kit Power cable x 1 SUBCAB S3x2,5+3x2,5/3+S(4x0,5) 18 - 20mm L= 10m Max 1000V Without cable handling kit Power cable x 1 SUBCAB 4G2,5+2x1,5 17 - 18mm L= 10m Max 750V With cable handling kit Power cable x 1 SUBCAB 4G2,5+2x1,5 17 - 18mm L= 20m Max 750V Without cable handling kit Power cable x 1 SUBCAB 7G2,5+2x1,5 20 - 22mm L= 20m	2		2

4 List of Parts

Pos. No	Part. No	Type	Denomination	Qty/Version		
				010	020	090
			Max 750V Without cable handling kit Power cable x 1 SUBCAB S3x2,5+3x2,5/3+S(4x0,5) 18 - 20mm L= 10m Max 1000V With cable handling kit Power cable x 1 SUBCAB S3x2,5+3x2,5/3+S(4x0,5) 18 - 20mm L= 20m Max 1000V With cable handling kit Power cable x 1 SUBCAB 4G6+2x1,5 24 - 26mm L= 16m Max 750V With cable handling kit Test cable SUBCAB 4G2,5+2x1,5 17 - 20mm L= 1,50m Test cable Max 750V Without cable handling kit Power cable x 1 SUBCAB 4G2,5+2x1,5 17 - 18mm L= 10m Max 750V Without cable handling kit Power cable x 1 SUBCAB 7G2,5+2x1,5 20 - 22mm L= 10m Max 750V Without cable handling kit			

Pos. No	Part. No	Type	Denomination	Qty/Version		
				010	020	090
118	82 27 27		Lock nut M8-A4-70 Power cable x 1 SUBCAB 4G4+2x1,5 20 - 22mm L= 10m Max 750V With cable handling kit Power cable x 1 SUBCAB 4G4+2x1,5 20 - 22mm L= 16m Max 750V With cable handling kit Power cable x 1 SUBCAB 4G4+2x1,5 20 - 22mm L= 16m Max 750V Without cable handling kit Test cable SUBCAB 4G2,5+2x1,5 20 - 23mm L= 1,50m Test cable Max 750V Without cable handling kit Power cable x 1 SUBCAB 7G2,5+2x1,5 20 - 22mm L= 10m Max 750V With cable handling kit Power cable x 1 SUBCAB 7G2,5+2x1,5 20 - 22mm L= 20m Max 750V With cable handling kit Power cable x 1 SUBCAB 4G2,5+2x1,5 17 - 18mm L= 20m Max 750V With cable handling kit Power cable x 1 SUBCAB S3x2,5+3x2,5/3+S(4x0,5) 18 - 20mm L= 20m Max 1000V Without cable handling kit Power cable x 1 SUBCAB 4G6+2x1,5 24 - 26mm L= 16m Max 750V Without cable handling kit Power cable x 1 SUBCAB 4G4+2x1,5 20 - 22mm L= 20m Max 750V With cable handling kit Power cable x 1 SUBCAB 4G4+2x1,5 20 - 22mm L= 10m Max 750V Without cable handling kit Power cable x 1 SUBCAB 4G4+2x1,5 20 - 22mm L= 20m Max 750V Without cable handling kit Power cable x 1 SUBCAB S3x2,5+3x2,5/3+S(4x0,5) 18 - 20mm L= 10m Max 1000V Without cable handling kit Power cable x 1 SUBCAB 4G2,5+2x1,5 17 - 18mm L= 10m Max 750V With cable handling kit Power cable x 1 SUBCAB 4G2,5+2x1,5 17 - 18mm L= 20m Max 750V Without cable handling kit Power cable x 1 SUBCAB 7G2,5+2x1,5 20 - 22mm L= 20m	2	2	2

4 List of Parts

Pos. No	Part. No	Type	Denomination	Qty/Version		
				010	020	090
			Max 750V Without cable handling kit Power cable x 1 SUBCAB S3x2,5+3x2,5/3+S(4x0,5) 18 - 20mm L= 10m Max 1000V With cable handling kit Power cable x 1 SUBCAB S3x2,5+3x2,5/3+S(4x0,5) 18 - 20mm L= 20m Max 1000V With cable handling kit Power cable x 1 SUBCAB 4G6+2x1,5 24 - 26mm L= 16m Max 750V With cable handling kit Test cable SUBCAB 4G2,5+2x1,5 17 - 20mm L= 1,50m Test cable Max 750V Without cable handling kit Power cable x 1 SUBCAB 4G2,5+2x1,5 17 - 18mm L= 10m Max 750V Without cable handling kit Power cable x 1 SUBCAB 7G2,5+2x1,5 20 - 22mm L= 10m Max 750V Without cable handling kit			

Pos. No	Part. No	Type	Denomination	Qty/Version		
				010	020	090
120	85 09 83		<p>Cable holder</p> <p>Power cable x 1 SUBCAB 4G4+2x1,5 20 - 22mm L= 10m Max 750V With cable handling kit</p> <p>Power cable x 1 SUBCAB 4G4+2x1,5 20 - 22mm L= 16m Max 750V With cable handling kit</p> <p>Power cable x 1 SUBCAB 4G4+2x1,5 20 - 22mm L= 16m Max 750V Without cable handling kit</p> <p>Test cable SUBCAB 4G2,5+2x1,5 20 - 23mm L= 1,50m Test cable Max 750V Without cable handling kit</p> <p>Power cable x 1 SUBCAB 7G2,5+2x1,5 20 - 22mm L= 10m Max 750V With cable handling kit</p> <p>Power cable x 1 SUBCAB 7G2,5+2x1,5 20 - 22mm L= 20m Max 750V With cable handling kit</p> <p>Power cable x 1 SUBCAB 4G2,5+2x1,5 17 - 18mm L= 20m Max 750V With cable handling kit</p> <p>Power cable x 1 SUBCAB S3x2,5+3x2,5/3+S(4x0,5) 18 - 20mm L= 20m Max 1000V Without cable handling kit</p> <p>Power cable x 1 SUBCAB 4G4+2x1,5 20 - 22mm L= 20m Max 750V With cable handling kit</p> <p>Power cable x 1 SUBCAB 4G4+2x1,5 20 - 22mm L= 10m Max 750V Without cable handling kit</p> <p>Power cable x 1 SUBCAB 4G4+2x1,5 20 - 22mm L= 20m Max 750V Without cable handling kit</p> <p>Power cable x 1 SUBCAB S3x2,5+3x2,5/3+S(4x0,5) 18 - 20mm L= 10m Max 1000V Without cable handling kit</p> <p>Power cable x 1 SUBCAB 4G2,5+2x1,5 17 - 18mm L= 10m Max 750V With cable handling kit</p> <p>Power cable x 1 SUBCAB 4G2,5+2x1,5 17 - 18mm L= 20m Max 750V Without cable handling kit</p> <p>Power cable x 1 SUBCAB 7G2,5+2x1,5 20 - 22mm L= 20m Max 750V Without cable handling kit</p> <p>Power cable x 1 SUBCAB S3x2,5+3x2,5/3+S(4x0,5) 18 -</p>		1	

4 List of Parts

Pos. No	Part. No	Type	Denomination	Qty/Version		
				010	020	090
			20mm L= 10m Max 1000V With cable handling kit Power cable x 1 SUBCAB S3x2,5+3x2,5/3+S(4x0,5) 18 - 20mm L= 20m Max 1000V With cable handling kit Test cable SUBCAB 4G2,5+2x1,5 17 - 20mm L= 1,50m Test cable Max 750V Without cable handling kit Power cable x 1 SUBCAB 4G2,5+2x1,5 17 - 18mm L= 10m Max 750V Without cable handling kit Power cable x 1 SUBCAB 7G2,5+2x1,5 20 - 22mm L= 10m Max 750V Without cable handling kit			
120	84 60 65		Cable clamp RUBBER SEALING STRIP 19MM		1	

Pos. No	Part. No	Type	Denomination	Qty/Version		
				010	020	090
122	82 27 26		Lock nut M6-A4-70 Power cable x 1 SUBCAB 4G4+2x1,5 20 - 22mm L= 10m Max 750V With cable handling kit Power cable x 1 SUBCAB 4G4+2x1,5 20 - 22mm L= 16m Max 750V With cable handling kit Power cable x 1 SUBCAB 4G4+2x1,5 20 - 22mm L= 16m Max 750V Without cable handling kit Test cable SUBCAB 4G2,5+2x1,5 20 - 23mm L= 1,50m Test cable Max 750V Without cable handling kit Power cable x 1 SUBCAB 7G2,5+2x1,5 20 - 22mm L= 10m Max 750V With cable handling kit Power cable x 1 SUBCAB 7G2,5+2x1,5 20 - 22mm L= 20m Max 750V With cable handling kit Power cable x 1 SUBCAB 4G2,5+2x1,5 17 - 18mm L= 20m Max 750V With cable handling kit Power cable x 1 SUBCAB S3x2,5+3x2,5/3+S(4x0,5) 18 - 20mm L= 20m Max 1000V Without cable handling kit Power cable x 1 SUBCAB 4G6+2x1,5 24 - 26mm L= 16m Max 750V Without cable handling kit Power cable x 1 SUBCAB 4G4+2x1,5 20 - 22mm L= 20m Max 750V With cable handling kit Power cable x 1 SUBCAB 4G4+2x1,5 20 - 22mm L= 10m Max 750V Without cable handling kit Power cable x 1 SUBCAB 4G4+2x1,5 20 - 22mm L= 20m Max 750V Without cable handling kit Power cable x 1 SUBCAB S3x2,5+3x2,5/3+S(4x0,5) 18 - 20mm L= 10m Max 1000V Without cable handling kit Power cable x 1 SUBCAB 4G2,5+2x1,5 17 - 18mm L= 10m Max 750V With cable handling kit Power cable x 1 SUBCAB 4G2,5+2x1,5 17 - 18mm L= 20m Max 750V Without cable handling kit Power cable x 1 SUBCAB 7G2,5+2x1,5 20 - 22mm L= 20m	1		1

4 List of Parts

Pos. No	Part. No	Type	Denomination	Qty/Version		
				010	020	090
			Max 750V Without cable handling kit Power cable x 1 SUBCAB S3x2,5+3x2,5/3+S(4x0,5) 18 - 20mm L= 10m Max 1000V With cable handling kit Power cable x 1 SUBCAB S3x2,5+3x2,5/3+S(4x0,5) 18 - 20mm L= 20m Max 1000V With cable handling kit Power cable x 1 SUBCAB 4G6+2x1,5 24 - 26mm L= 16m Max 750V With cable handling kit Test cable SUBCAB 4G2,5+2x1,5 17 - 20mm L= 1,50m Test cable Max 750V Without cable handling kit Power cable x 1 SUBCAB 4G2,5+2x1,5 17 - 18mm L= 10m Max 750V Without cable handling kit Power cable x 1 SUBCAB 7G2,5+2x1,5 20 - 22mm L= 10m Max 750V Without cable handling kit			

Pos. No	Part. No	Type	Denomination	Qty/Version		
				010	020	090
122	82 27 26		Lock nut M6-A4-70 Power cable x 1 SUBCAB 4G4+2x1,5 20 - 22mm L= 10m Max 750V With cable handling kit Power cable x 1 SUBCAB 4G4+2x1,5 20 - 22mm L= 16m Max 750V With cable handling kit Power cable x 1 SUBCAB 4G4+2x1,5 20 - 22mm L= 16m Max 750V Without cable handling kit Test cable SUBCAB 4G2,5+2x1,5 20 - 23mm L= 1,50m Test cable Max 750V Without cable handling kit Power cable x 1 SUBCAB 7G2,5+2x1,5 20 - 22mm L= 10m Max 750V With cable handling kit Power cable x 1 SUBCAB 7G2,5+2x1,5 20 - 22mm L= 20m Max 750V With cable handling kit Power cable x 1 SUBCAB 4G2,5+2x1,5 17 - 18mm L= 20m Max 750V With cable handling kit Power cable x 1 SUBCAB S3x2,5+3x2,5/3+S(4x0,5) 18 - 20mm L= 20m Max 1000V Without cable handling kit Power cable x 1 SUBCAB 4G6+2x1,5 24 - 26mm L= 16m Max 750V Without cable handling kit Power cable x 1 SUBCAB 4G4+2x1,5 20 - 22mm L= 20m Max 750V With cable handling kit Power cable x 1 SUBCAB 4G4+2x1,5 20 - 22mm L= 10m Max 750V Without cable handling kit Power cable x 1 SUBCAB 4G4+2x1,5 20 - 22mm L= 20m Max 750V Without cable handling kit Power cable x 1 SUBCAB S3x2,5+3x2,5/3+S(4x0,5) 18 - 20mm L= 10m Max 1000V Without cable handling kit Power cable x 1 SUBCAB 4G2,5+2x1,5 17 - 18mm L= 10m Max 750V With cable handling kit Power cable x 1 SUBCAB 4G2,5+2x1,5 17 - 18mm L= 20m Max 750V Without cable handling kit Power cable x 1 SUBCAB 7G2,5+2x1,5 20 - 22mm L= 20m	1	1	1

Pos. No	Part. No	Type	Denomination	Qty/Version		
				010	020	090
			<p>Max 750V Without cable handling kit</p> <p>Power cable x 1 SUBCAB S3x2,5+3x2,5/3+S(4x0,5) 18 - 20mm L= 10m Max 1000V With cable handling kit</p> <p>Power cable x 1 SUBCAB S3x2,5+3x2,5/3+S(4x0,5) 18 - 20mm L= 20m Max 1000V With cable handling kit</p> <p>Power cable x 1 SUBCAB 4G6+2x1,5 24 - 26mm L= 16m Max 750V With cable handling kit</p> <p>Test cable SUBCAB 4G2,5+2x1,5 17 - 20mm L= 1,50m Test cable Max 750V Without cable handling kit</p> <p>Power cable x 1 SUBCAB 4G2,5+2x1,5 17 - 18mm L= 10m Max 750V Without cable handling kit</p> <p>Power cable x 1 SUBCAB 7G2,5+2x1,5 20 - 22mm L= 10m Max 750V Without cable handling kit</p>			
136	83 45 63		Cable holder		1	
138	83 03 76		Hex.socket hd screw M16X70-A4-70	8	8	8
			<p>Stand Installation Guided Guide bar dimension: 100 x 150mm Installation Guided Material: stainless steel (ASTM 316L) Four fixed sleeves</p> <p>Stand Installation Guided Guide bar dimension: 100 x 100mm Material: stainless steel (ASTM 316L) Four fixed sleeves</p> <p>Stand Installation Double guide bars Guide bar dimension: OD 114,3mm Material: stainless steel (ASTM 316L)</p>			
138	83 03 76		Hex.socket hd screw M16X70-A4-70	8		8
			<p>Stand Installation Guided Guide bar dimension: 100 x 150mm Installation Guided Material: stainless steel (ASTM 316L) Four fixed sleeves</p> <p>Stand Installation Guided Guide bar dimension: 100 x 100mm Material: stainless steel (ASTM 316L) Four fixed sleeves</p> <p>Stand Installation Double guide bars Guide bar dimension: OD 114,3mm Material: stainless steel (ASTM 316L)</p>			

Pos. No	Part. No	Type	Denomination	Qty/Version		
				010	020	090
139	82 50 19		Lock washer M16 Stand Installation Guided Guide bar dimension: 100 x 150mm Installation Guided Material: stainless steel (ASTM 316L) Four fixed sleeves Stand Installation Guided Guide bar dimension: 100 x 100mm Material: stainless steel (ASTM 316L) Four fixed sleeves Stand Installation Double guide bars Guide bar dimension: OD 114,3mm Material: stainless steel (ASTM 316L)	8	8	8
139	82 50 19		Lock washer M16 Stand Installation Guided Guide bar dimension: 100 x 150mm Installation Guided Material: stainless steel (ASTM 316L) Four fixed sleeves Stand Installation Guided Guide bar dimension: 100 x 100mm Material: stainless steel (ASTM 316L) Four fixed sleeves Stand Installation Double guide bars Guide bar dimension: OD 114,3mm Material: stainless steel (ASTM 316L)	8		8
141	481 95 12		Stand unit Stand Installation Guided Guide bar dimension: 100 x 150mm Installation Guided Material: stainless steel (ASTM 316L) Four fixed sleeves	1		1
141	481 95 10		Stand unit Stand Installation Guided Guide bar dimension: 100 x 100mm Material: stainless steel (ASTM 316L) Four fixed sleeves	1		1
141	481 95 13		Stand unit Stand Installation Guided Guide bar dimension: 100 x 100mm Installation Guided Material: stainless steel (ASTM 316L) Four fixed sleeves Stand Installation Guided Guide bar dimension: 100 x 150mm Installation Guided Material: stainless steel (ASTM 316L) Four fixed sleeves		1	
142	842 76 00		Lifting handle Stand Installation Guided Guide bar dimension: 100 x 150mm Installation Guided Material: stainless steel (ASTM 316L) Four fixed sleeves Stand Installation Guided Guide bar dimension: 100 x 100mm Material: stainless steel (ASTM 316L) Four fixed sleeves	1	1	1

Pos. No	Part. No	Type	Denomination	Qty/Version		
				010	020	090
142	842 76 00		Lifting handle Stand Installation Guided Guide bar dimension: 100 x 150mm Installation Guided Material: stainless steel (ASTM 316L) Four fixed sleeves	1		1
166	482 04 02		Support Stand Installation Guided Guide bar dimension: 100 x 100mm Material: stainless steel (ASTM 316L) Four fixed sleeves	1		1
166	482 04 02		Support Stand Installation Guided Guide bar dimension: 100 x 150mm Installation Guided Material: stainless steel (ASTM 316L) Four fixed sleeves Stand Installation Guided Guide bar dimension: 100 x 100mm Material: stainless steel (ASTM 316L) Four fixed sleeves Stand Installation Double guide bars Guide bar dimension: OD 114,3mm Material: stainless steel (ASTM 316L)	2		2
172	82 26 49		Shackle	2	2	2
172	82 26 49		Shackle	2		2
174	82 27 30		Lock nut M16-A4-70	8		8
175	509 53 06		Stand unit	1		1
175,2	82 23 35		Hexagon nut M12-A4-70	4		4
175,3	82 35 71		Plain washer 4.3X9X0.8- A4-170HV	12		12
175,4	82 50 17		Lock washer M12	8		8
175,6	83 03 47		Hex.socket hd screw M12X35- A4-70	4		4
175,7	84 24 58		Blind rivet	12		12
175,9	509 45 00		Claw	2		2
175,10	547 84 02		Lifting handle	1		1
176	753 29 00		Mounting kit PROPELLER	1		1
176,1	80 46 27		Parallel key 14H9X9H11X70	2		2
176,2	791 13 00		Damper	2		2

Pos. No	Part. No	Type	Denomination	Qty/Version		
				010	020	090
176,3	83 03 76		Hex.socket hd screw M16X70-A4-70	1		1
176,4	384 61 00		Supporting washer	1		1
176,5	82 77 96		O-ring 57.5X3 NBR	1		1
176,7	81 49 32		Hexagon head screw M16X45-A4-70	2		2
176,8	82 50 19		Lock washer M16	2		2
176,9	494 78 01		Supporting washer	2		2
176,10	82 74 66		O-ring 64.5X3 NBR	2		2
177	851 77 00	(Ex)	Distance block	2	2	2
177	851 77 00	(Ex)	Distance block	2		2
177	851 77 00	(Ex)	Distance block	4		4
178	807 82 00		Clamp		2	
179	84 66 55		Cable clamp RUBBER SEALING STRIP 15MM	1		
			Bearing holder *** For FD use only *** Water in oil supervision: KOD Sealed stator housing			
179	83 03 76		Hex.socket hd screw M16X70-A4-70	8		8
			Stand Installation Double guide bars Guide bar dimension: OD 114,3mm Material: stainless steel (ASTM 316L)			
179	83 03 48		Hex.socket hd screw M12X40-A4-70		2	
			Stand Installation Guided Guide bar dimension: 100 x 100mm Installation Guided Material: stainless steel (ASTM 316L) Four fixed sleeves			
			Stand Installation Guided Guide bar dimension: 100 x 150mm Installation Guided Material: stainless steel (ASTM 316L) Four fixed sleeves			
180	82 50 17		Lock washer M12		2	
181	82 50 17		Lock washer M12	1		1
181	82 50 17		Lock washer M12	2		

Pos. No	Part. No	Type	Denomination	Qty/Version		
				010	020	090
190	819 32 00		Propeller unit Propeller No of poles=2 Mtrl. Stainless steel (ASTM 316L and DUPLEX) No of blades 3 OD: 1250mm 3-phase 50Hz Maximum ambient temperature 40 DC Propeller No of poles=2 Mtrl. Stainless steel (ASTM 316L and DUPLEX) No of blades 3 OD: 1250mm 3-phase 60Hz Maximum ambient temperature 60 DC Propeller No of poles=2 Mtrl. Stainless steel (ASTM 316L and DUPLEX) No of blades 3 OD: 1250mm 3-phase 50Hz Maximum ambient temperature 60 DC Propeller No of poles=2 Mtrl. Stainless steel (ASTM 316L and DUPLEX) No of blades 3 OD: 1250mm 3-phase 60Hz Maximum ambient temperature 40 DC	1	1	1
190	819 33 00		Propeller unit Propeller No of poles=2 Mtrl. Stainless steel (ASTM 316L and DUPLEX) No of blades 3 OD: 1000mm 3-phase 50Hz Maximum ambient temperature 40 DC Propeller No of poles=2 Mtrl. Stainless steel (ASTM 316L and DUPLEX) No of blades 3 OD: 1000mm 3-phase 50Hz Maximum ambient temperature 60 DC		1	
222	679 03 00		Holder	2		
223	82 74 63		O-ring 49.5X3 NBR	1		1
224	597 98 02	(Ex)	Sleeve	1		1
230	82 74 91		O-ring 189.3X5.7 NBR	1	1	1
250	726 11 00		Fastening kit	1		1
400	667 40 00		Sticker	2	2	2
800	82 97 19		O-ring kits	1	1	1
801	466 26 14		Zinc anode kit	1		1
801	466 26 15		Zinc anode kit	1		1
			Parts for Registration module Order on part numbers			
			Parts for Registration module Order on part numbers			

Pos. No	Part. No	Type	Denomination	Qty/Version		
				010	020	090
813	823 26 04		Handling kit Power cable x 1 SUBCAB S3x2,5+3x2,5/3+S(4x0,5) 18 - 20mm L= 10m Max 1000V With cable handling kit Power cable x 1 SUBCAB 7G2,5+2x1,5 20 - 22mm L= 10m Max 750V With cable handling kit Power cable x 1 SUBCAB 4G2,5+2x1,5 17 - 18mm L= 10m Max 750V With cable handling kit	1		1
813	823 26 05		Handling kit Power cable x 1 SUBCAB S3x2,5+3x2,5/3+S(4x0,5) 18 - 20mm L= 20m Max 1000V With cable handling kit Power cable x 1 SUBCAB 4G4+2x1,5 20 - 22mm L= 20m Max 750V With cable handling kit Power cable x 1 SUBCAB 4G2,5+2x1,5 17 - 18mm L= 20m Max 750V With cable handling kit Power cable x 1 SUBCAB 7G2,5+2x1,5 20 - 22mm L= 20m Max 750V With cable handling kit	1		1
813	823 26 06		Handling kit Power cable x 1 SUBCAB 4G4+2x1,5 20 - 22mm L= 16m Max 750V With cable handling kit Power cable x 1 SUBCAB 4G6+2x1,5 24 - 26mm L= 16m Max 750V With cable handling kit Power cable x 1 SUBCAB 4G4+2x1,5 20 - 22mm L= 10m Max 750V With cable handling kit	1		1
900	775 84 00		Basic repair kit	1	1	1
901	90 17 52		Oil ISO VG 32	*	*	*
901	90 17 58		Oil GEAR UNITS	5		5
901	90 17 58		Oil GEAR UNITS	5	5	5
901	90 17 64		Oil Reduction ratio: 44,96:1 Frequency: 60 Hz Number of Poles: 2 Propeller Speed: 79 rpm Reduction ratio: 31,04:1 Frequency: 50 Hz Number of Poles: 2 Propeller Speed: 96 rpm Reduction ratio: 31,04:1 Frequency: 50 Hz Number of Poles: 2 Propeller Speed: 96 rpm Reduction ratio: 36,96:1 Frequency: 50 Hz Number of Poles: 2 Propeller Speed: 80 rpm	5	5	5

4 List of Parts

Pos. No	Part. No	Type	Denomination	Qty/Version		
				010	020	090
901	90 17 64		Oil Reduction ratio: 44,96:1 Frequency: 60 Hz Number of Poles: 2 Propeller Speed: 79 rpm Reduction ratio: 31,04:1 Frequency: 50 Hz Number of Poles: 2 Propeller Speed: 96 rpm Reduction ratio: 31,04:1 Frequency: 50 Hz Number of Poles: 2 Propeller Speed: 96 rpm Reduction ratio: 36,96:1 Frequency: 50 Hz Number of Poles: 2 Propeller Speed: 80 rpm	5		5
901	90 17 58		Oil GEAR UNITS		5	
901	90 17 64		Oil Reduction ratio: 44,96:1 Frequency: 60 Hz Number of Poles: 2 Propeller Speed: 79 rpm Reduction ratio: 31,04:1 Frequency: 50 Hz Number of Poles: 2 Propeller Speed: 96 rpm Reduction ratio: 31,04:1 Frequency: 50 Hz Number of Poles: 2 Propeller Speed: 96 rpm Reduction ratio: 36,96:1 Frequency: 50 Hz Number of Poles: 2 Propeller Speed: 80 rpm		5	
905	853 13 00		Fastening kit	1	1	
912	82 73 90		O-ring 19.2X3 NBR	5	5	5
915	659 35 00		Mounting kit MBBR Coating: MBBR Thickness = 450 - 550 micrometer M0700.00.0011 Hub for 2-blades included Coating: MBBR Thickness = 450 - 550 micrometer M0700.00.0011	1		1
915	659 35 00		Mounting kit MBBR Coating: MBBR Thickness = 450 - 550 micrometer M0700.00.0011 Hub for 2-blades included Coating: MBBR Thickness = 450 - 550 micrometer M0700.00.0011	1	1	1

Xylem |'zīləm|

- 1) The tissue in plants that brings water upward from the roots;
- 2) a leading global water technology company.

We're a global team unified in a common purpose: creating advanced technology solutions to the world's water challenges. Developing new technologies that will improve the way water is used, conserved, and re-used in the future is central to our work. Our products and services move, treat, analyze, monitor and return water to the environment, in public utility, industrial, residential and commercial building services settings. Xylem also provides a leading portfolio of smart metering, network technologies and advanced analytics solutions for water, electric and gas utilities. In more than 150 countries, we have strong, long-standing relationships with customers who know us for our powerful combination of leading product brands and applications expertise with a strong focus on developing comprehensive, sustainable solutions.

For more information on how Xylem can help you, go to www.xylem.com



Xylem Water Solutions Global
Services AB 556782-9253
361 80 Emmaboda
Sweden
Tel: +46-471-24 70 00
Fax: +46-471-24 74 01
<http://tpi.xylem.com>
[www.xylemwatersolutions.com/
contacts/](http://www.xylemwatersolutions.com/contacts/)

Visit our Web site for the latest version of this document and more information

The original instruction is in English. All non-English instructions are translations of the original instruction.

© 2012 Xylem Inc