

E7620/E7620R

Table of Contents

1 Introduction.....	2
2 Product Description.....	3
2.1 The data plate.....	3
2.2 Product denomination.....	3
3 Parts.....	5
3.1 Turbine E7620: fixed runner.....	5
3.2 Turbine E7620R: adjustable runner.....	9
3.3 Turbine installation: adjustable runner.....	15

1 Introduction

Purpose of this manual

The purpose of this manual is to provide necessary information on spare parts and accessories order.

Disclaimer

Always use genuine Flygt parts. The use of other spare parts or accessories can invalidate any claims for warranty or compensation. Xylem does not take any responsibility for damages that are caused by the use of non-original parts. For more information, contact your local sales and service representative.

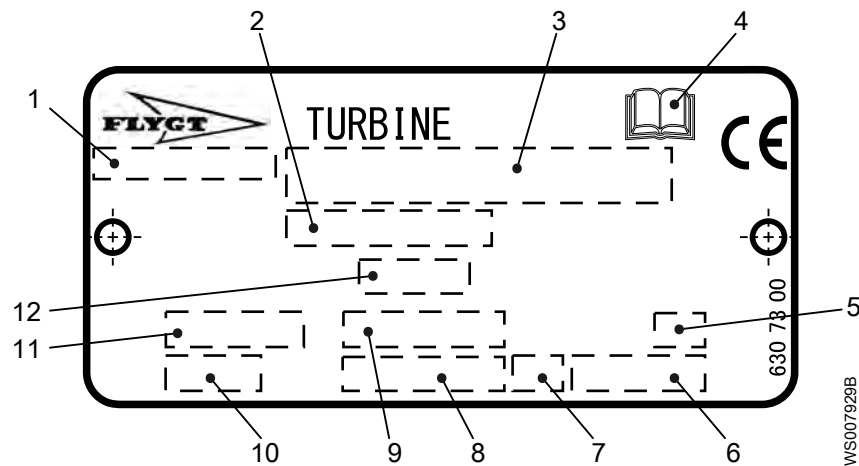
Data for ordering spare parts

The following information is needed for spare part orders:

- Serial number of the product
- Part number
- Quantity of bulk material, see * in tables

2 Product Description

2.1 The data plate



1. Country of origin
2. Product number
3. Serial number
4. Read the care and maintenance instructions
5. Blade angle
6. Product weight: generator + turbine + gear (if applicable)
7. Direction of rotation: runner/generator
8. Rated speed
9. Blade angle interval
10. Turbine housing
11. Turbine column diameter
12. Runner code

2.2 Product denomination

Reading instruction

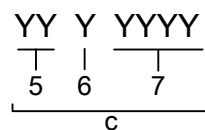
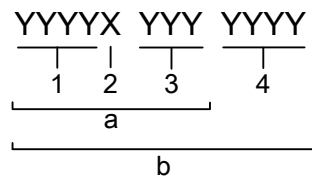
In this section, code characters are illustrated accordingly:

X = letter

Y = digit

The different types of codes are marked up with a, b, and c. Code parameters are marked up with numbers.

Codes and parameters



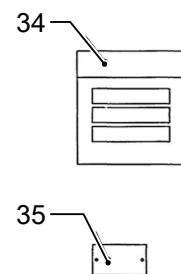
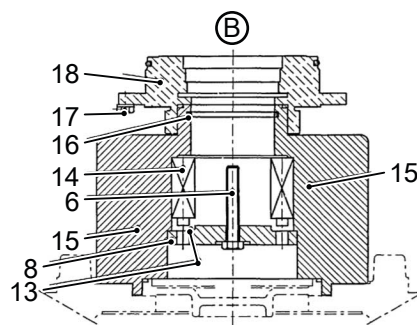
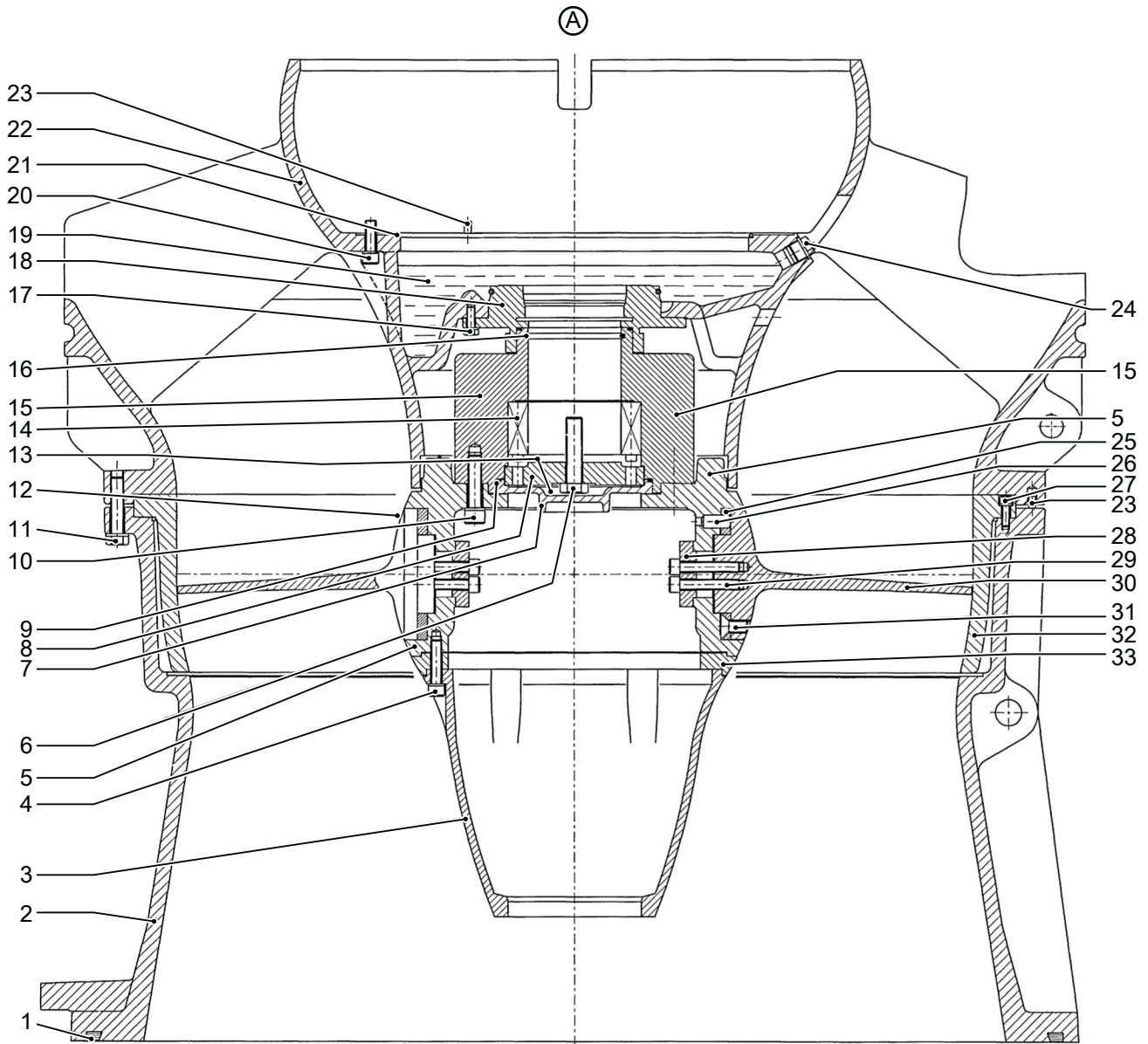
WS007962A

Type of Callout	Number	Indication
Type of code	a	Product code
	b	Product number
	c	Serial number

Type of Callout	Number	Indication
Parameter	1	Turbine unit
	2	"R" (only for adjustable-blade hydroturbines)
	3	Generator unit
	4	Sequence number
	5	Production year
	6	Production cycle
	7	Running number

3 Parts

3.1 Turbine E7620: fixed runner



WS009060A

Item	Denomination
A	Large hub
B	Small hub

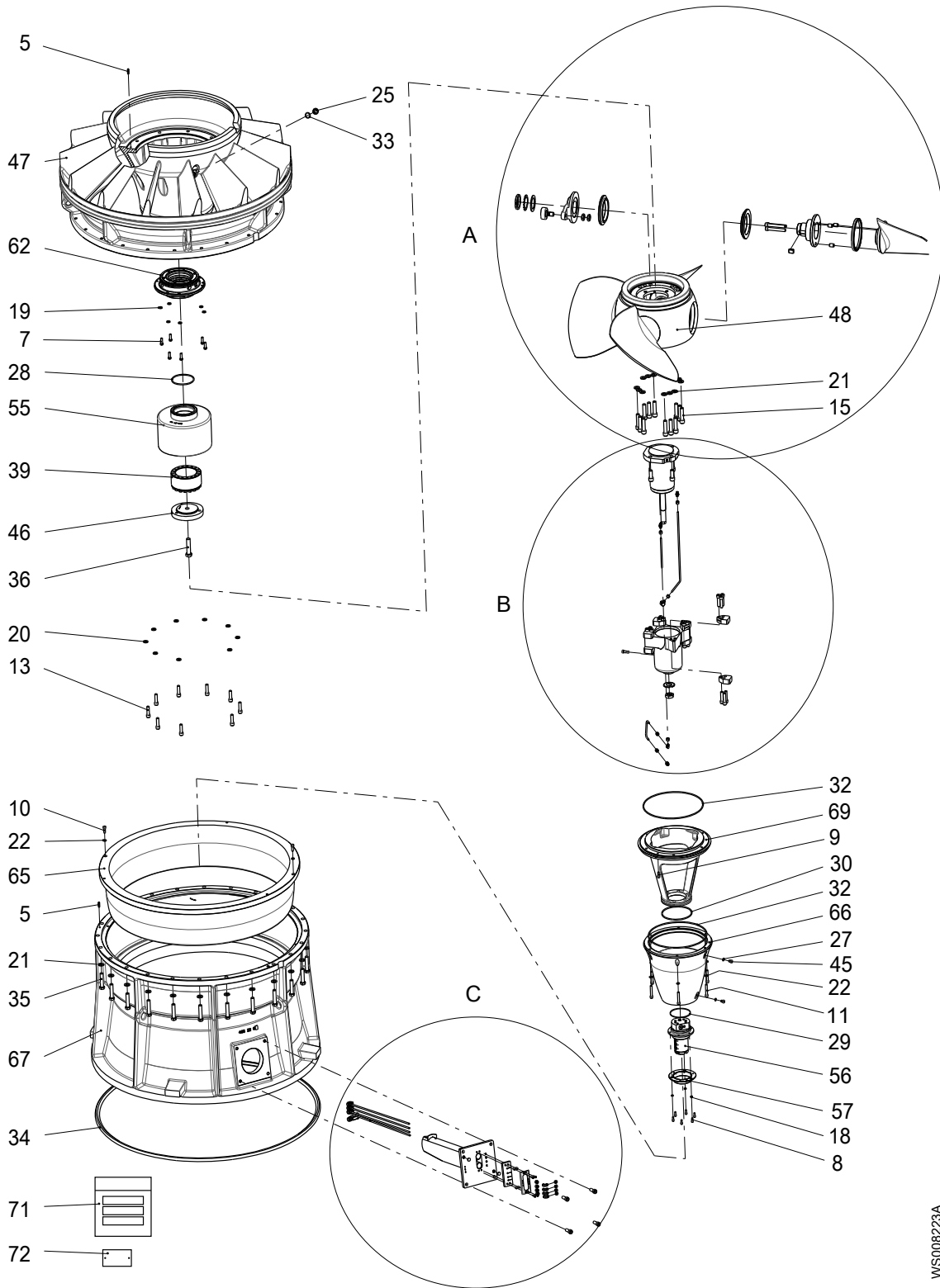
Item	Denomination	Part No.	Qty.	
1	G-ring	82 83 39	1	
2	Outlet cone	485 22 00	1	
3	Casing	485 19 01	1	
4	Screw	82 01 11	6	
	Spring washer	82 48 68	6	
5	Propeller hub	Four runner blades	496 27 00	1
		Five runner blades	526 06 00	
6	Screw	Small hub	84 34 13	1
		Large hub	84 34 57	
7	Cover	427 22 00	1	
8	Supporting washer	Large hub	427 23 00	1
		Small hub	426 07 00	
9	O-ring	82 74 95	1	
10	Screw	82 01 28	<ul style="list-style-type: none"> • 12 for runner with four blades • 15 for runner with five blades 	
	Washer	82 35 26	<ul style="list-style-type: none"> • 12 for runner with four blades • 15 for runner with five blades 	
11	Screw	84 34 35	24	
	Washer	82 35 26	24	
12	Gasket	505 13 00	<ul style="list-style-type: none"> • 4 for runner with four blades • 5 for runner with five blades 	
13	Grease	90 20 54	<ul style="list-style-type: none"> • 50 g (1.8 oz) for small hub • 100 g (3.5 oz) for large hub 	
14	Locking assembly	Torque: 225 Nm (166 ft-lb)	84 60 11 (small hub)	1
			84 60 12 (large hub)	
15	Hub	Large hub, four blades	593 23 00	1
		Large hub, five blades	593 24 00	
		Small hub, four blades	593 25 00	
		Small hub, five blades	593 26 00	
16	O-ring	Small hub	82 74 14	1
		Large hub	82 74 20	
17	Screw	81 41 56	<ul style="list-style-type: none"> • 3 for small hub • 6 for large hub 	
	Washer	82 35 20	<ul style="list-style-type: none"> • 3 for small hub • 6 for large hub 	

Item	Denomination		Part No.	Qty.
18	Seal unit	Large hub	433 74 01	1
	Mechanical seal	Small hub	556 60 00	
19	Oil		90 17 57	18 L
20	Screw		82 01 08	9
	Washer		82 35 23	9
	Locking liquid		90 32 55	*
21	O-ring		82 75 13	1
22	Turbine housing	TH1 (70°), for small hub	464 91 01	1
		TH1 (70°), for large hub	464 91 00	
		TH2 (63°), for small hub	464 91 03	
		TH2 (63°), for large hub	464 91 02	
		TH3 (57°), for small hub	464 91 05	
		TH3 (57°), for large hub	464 91 04	
		TH4 (50°), for small hub	464 91 07	
		TH4 (50°), for large hub	464 91 06	
23	Tension pin		80 58 95	2
24	Plug	Torque: 80 Nm (59 ft-lb)	809 33 00	1
	O-ring		82 77 30	1
25	Supporting washer	For blade angle 8°	428 44 22	<ul style="list-style-type: none"> • 4 for runner with four blades • 5 for runner with five blades
		For blade angle 9°	428 44 21	
		For blade angle 10°	428 44 20	
		For blade angle 11°	428 44 19	
		For blade angle 12°	428 44 18	
		For blade angle 13°	428 44 17	
		For blade angle 14°	428 44 16	
		For blade angle 15°	428 44 15	
		For blade angle 16°	428 44 14	
		For blade angle 17°	428 44 13	
		For blade angle 18°	428 44 12	
		For blade angle 19°	428 44 11	
		For blade angle 20°	428 44 10	
		For blade angle 21°	428 44 09	
		For blade angle 22°	428 44 08	
		For blade angle 23°	428 44 07	
		For blade angle 24°	428 44 06	
		For blade angle 25°	428 44 05	
		For blade angle 26°	428 44 04	
		For blade angle 27°	428 44 03	
For blade angle 28°	428 44 02			
For blade angle 29°	428 44 01			
For blade angle 30°	428 44 00			

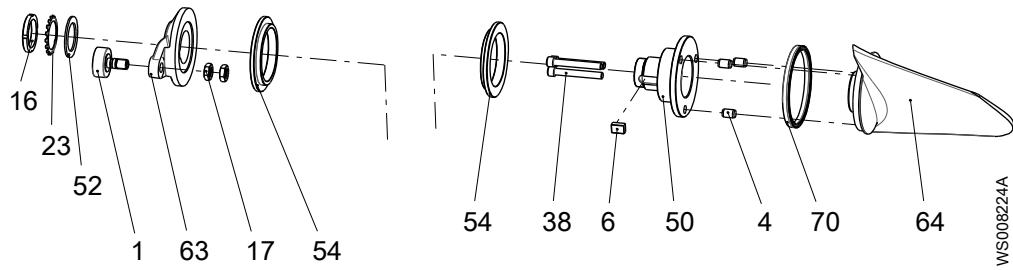
Item	Denomination		Part No.	Qty.
26	Parallel pin		80 31 17	<ul style="list-style-type: none"> • 12 for runner with four blades • 15 for runner with five blades
27	Screw		82 00 69	2
	Lock washer		82 50 17	2
28	Plate		498 21 00	<ul style="list-style-type: none"> • 4 for runner with four blades • 5 for runner with five blades
29	Screw	Torque: 160 Nm (118 ft-lb)	82 01 14	<ul style="list-style-type: none"> • 12 for runner with four blades • 15 for runner with five blades
30	Turbine blade	Opposite blades, difference in weight 260 g (9.17 oz) max	473 49 02 (bronze)	<ul style="list-style-type: none"> • 4 for runner with four blades • 5 for runner with five blades
			473 49 03 (stainless steel)	
31	Screw		82 38 62	<ul style="list-style-type: none"> • 12 for runner with four blades • 15 for runner with five blades
32	Wear ring	Bronze	485 18 00	1
		Stainless steel	485 18 01	
33	Supporting washer		485 21 00	1
34	Packing kit		395 02 01	1
35	Data plate		630 73 00	2
	Drive screw		82 20 88	2

3.2 Turbine E7620R: adjustable runner

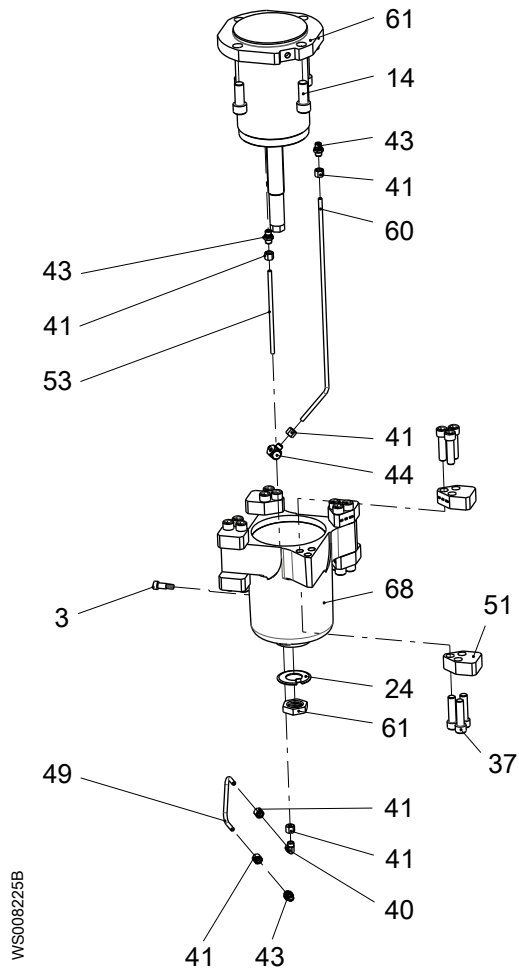
Overview



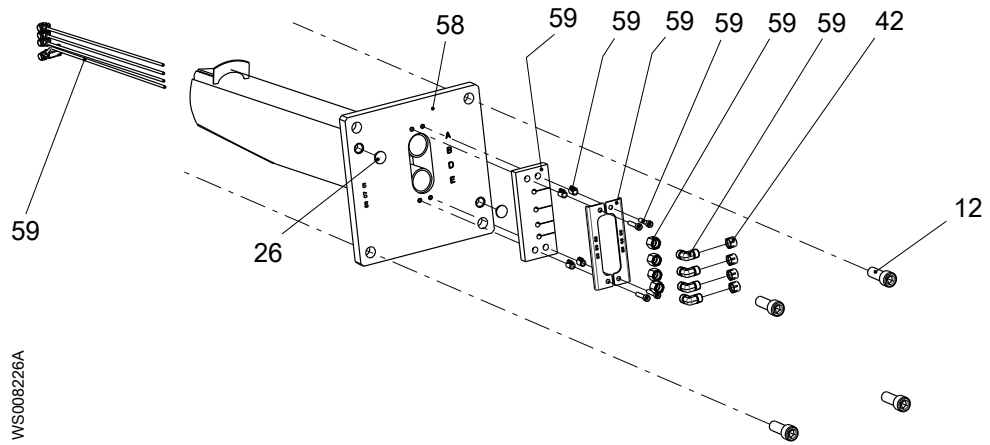
Detail A



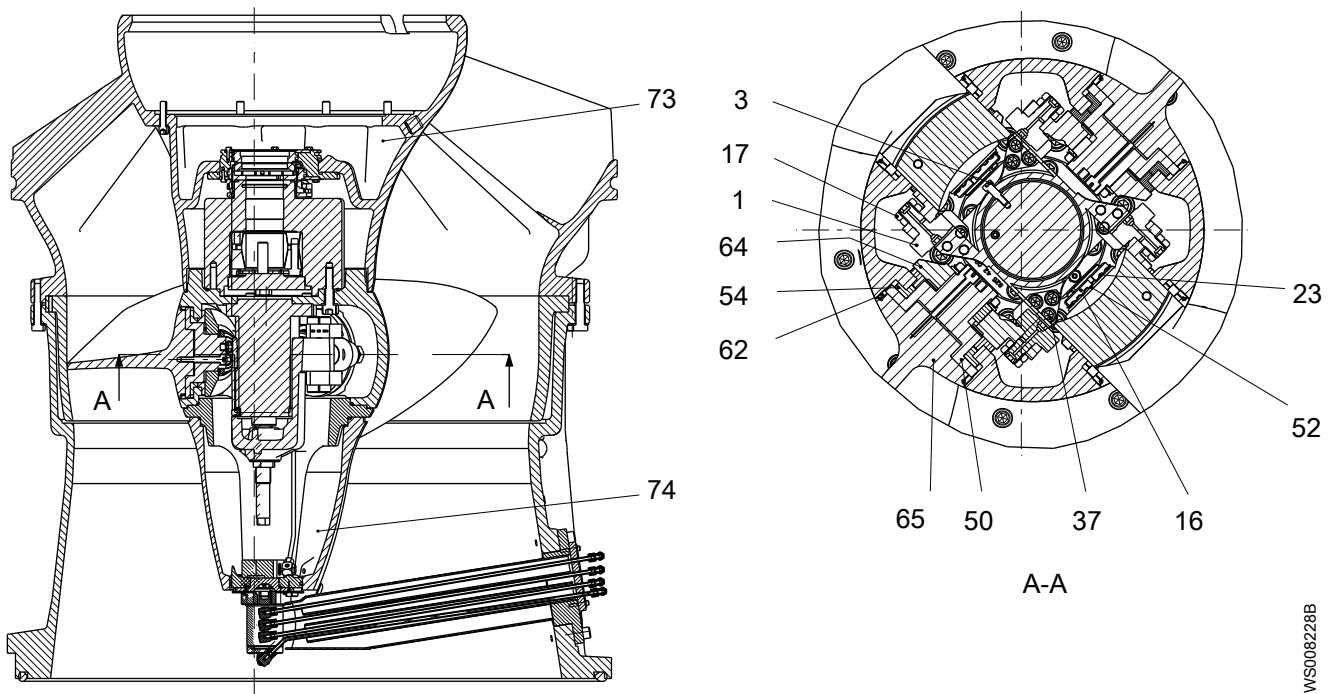
Detail B

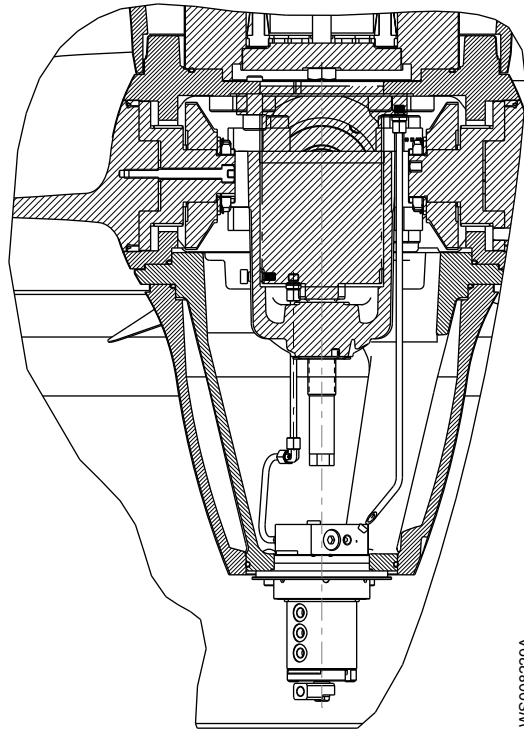


Detail C



Sections





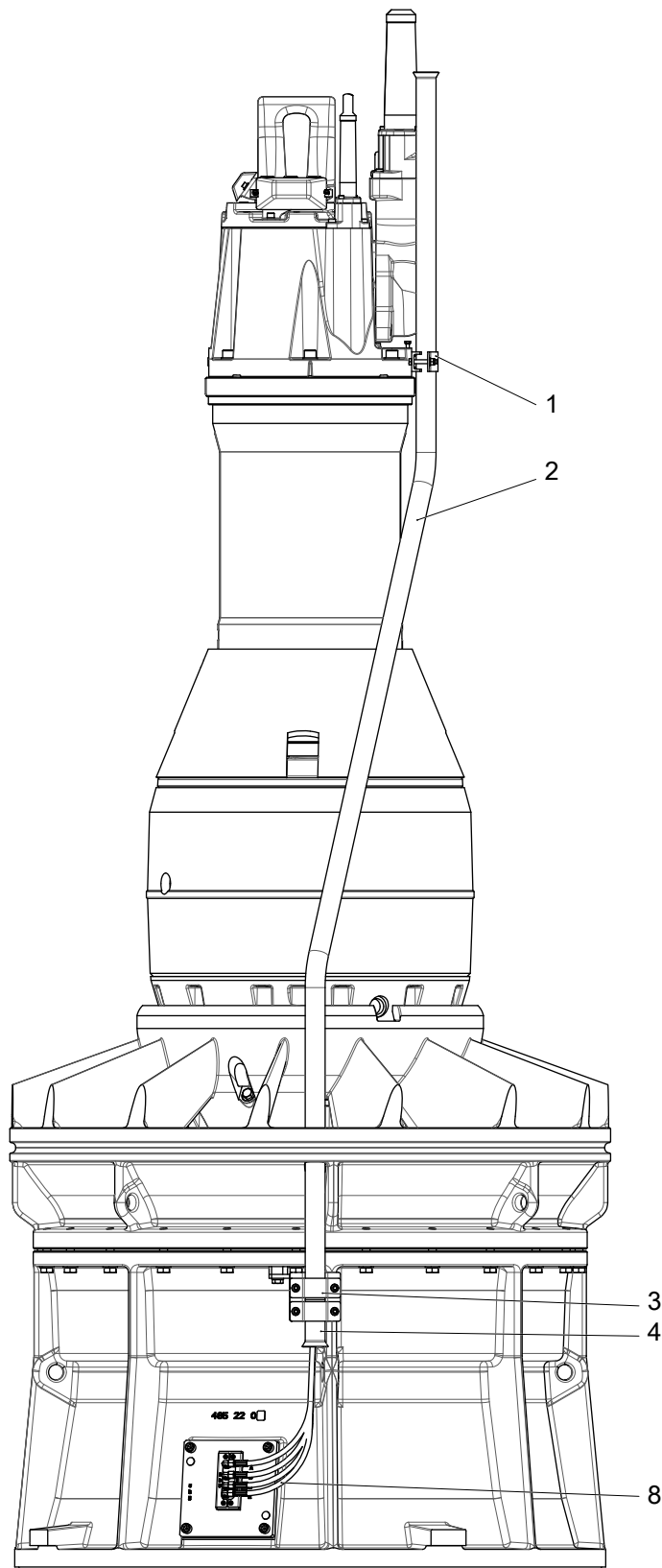
Table

Item	Denomination		Part No.	Qty.
1	Cam roller		80 10 41	4
	Grease		90 20 54	100 g (3.5 oz)
2	Plug		80 12 20	2
3	Hexagon socket head screw	Torque: 50 Nm (37 lbf-ft)	80 12 35	1
	Locking liquid		90 32 55	*
4	Parallel pin	20×30	80 32 00	12
5	Tension pin		80 58 95	2
6	Parallel key		80 79 35	4
7	Hexagon head screw	M12×35	81 41 56	<ul style="list-style-type: none"> • 3 for small hub • 6 for large hub
8	Hexagon socket head cap screw	M8×20	82 00 32	6
9	Hexagon socket head cap screw	M10×25	82 00 51	2
10	Hexagon socket head cap screw	M12×30	82 00 69	2
11	Hexagon socket head cap screw	M12×70	83 02 67	6
12	Hexagon socket head cap screw	M16×50	82 01 07	4
13	Hexagon socket head cap screw	M16×55	82 01 08	9
14	Hexagon socket head cap screw	M20×50	82 01 26	4
15	Hexagon socket head cap screw	M20×80	82 01 28	12
16	Round nut		82 22 39	4

Item	Denomination		Part No.	Qty.
17	Hexagon nut	Torque: 133 Nm (98 lbf-ft)	82 25 48	8
18	Plain washer	8.4×16.0×1.6	82 35 16	3
19	Plain washer	13.0×24.0×2.5	82 35 20	<ul style="list-style-type: none"> • 3 for small hub • 6 for large hub
20	Plain washer	17.0×30.0×3.0	82 35 23	9
21	Plain washer	21.0×37.0×3.0	82 35 26	36
22	Lock washer		82 50 17	8
23	Lock washer		82 51 39	4
24	Washer		82 53 20	1
25	Plug	Torque: 80 Nm (59 lbf-ft)	809 33 00	1
26	Protective plug		82 69 41	2
27	O-ring	13.30×2.40	82 73 85	3
28	O-ring	139.30×5.70	82 74 20	1
29	O-ring	129.50×3.0	82 74 79	1
30	O-ring	184.30×5.70	82 74 90	1
31	O-ring	319.30×5.70	82 75 04	1
32	O-ring	359.30×5.70	82 75 06	2
33	O-ring	28.17×3.53	82 77 30	1
34	G-ring		82 83 39	1
35	Hexagon head screw	M20×90	84 34 35	24
36	Hexagon head screw	M24×100	84 34 57	1
37	Hexagon socket head cap screw	M16×60 Torque: 375 Nm (277 lbf-ft)	84 51 88	24
38	Hexagon socket head cap screw	M16×120 Torque: 375 Nm (277 lbf-ft)	84 51 96	12
39	Locking assembly	Large hub	84 60 12	1
		Small hub	84 60 11	
	Grease		90 20 54	50 g (1.8 oz)
40	Coupling		85 02 75	1
41	Nut		85 02 76	6
42	Protective cap		85 02 78	4
43	Coupling		85 02 87	3
44	Banjo coupling	<ol style="list-style-type: none"> 1. Hand-tighten the coupling. 2. Tighten a further ¼ turn, 90°. 	85 04 30	1
45	Plug		303 44 03	3
46	Supporting washer		427 23 00	1

Item	Denomination	Part No.	Qty.	
47	Turbine housing	TH1 (70°), large hub	464 91 08	1
		TH1 (70°), small hub	464 91 09	
		TH2 (63°), large hub	464 91 10	
		TH2 (63°), small hub	464 91 12	
		TH3 (57°), large hub	464 91 13	
		TH3 (57°), small hub	464 91 14	
		TH4 (50°), large hub	464 91 15	
		TH4 (50°), small hub	464 91 16	
48	Propeller hub		496 27 02	1
49	Pipe		496 71 12	1
50	Shaft		496 81 01	4
51	Plate		496 83 00	8
52	Plain washer		496 84 03	4
53	Pipe		496 85 11	1
54	Bearing bush		569 51 02	8
	Grease		90 20 54	40 g (1.4 oz)
55	Hub		593 23 00	1
56	Swivel unit		605 14 00	1
57	Protective ring		822 52 00	1
58	Protective pipe		823 42 00	1
59	Pipe unit		823 47 00	1
60	Pipe		824 39 00	1
61	Hydraulic cylinder		825 42 00	1
62	Seal unit	Large hub	433 74 01	1
	Mechanical seal	Small hub	556 60 00	
63	Driver		496 31 01	4
64	Turbine blade	Bronze	473 49 04	4
		Stainless steel	473 49 05	
65	Wear ring	Bronze	485 18 00	1
		Stainless steel	485 18 01	
66	Casing		485 19 01	1
67	Outlet cone		485 22 01	1
68	Drive housing		496 18 01	1
69	Stand		496 22 00	1
70	Seal ring		84 91 53	4
71	Packing kit		395 02 01	1
72	Data plate		630 73 00	2
	Drive screw		82 20 88	2
73	Oil		90 17 57	18 L (19 quarts)
74	Oil		90 17 52	3 L (3.2 quarts)

3.3 Turbine installation: adjustable runner



WS01165A

Item	Denomination	Part No.	Qty.
1	Bracket	825 07 00	1
2	Pipe	825 15 00	1

Item	Denomination	Part No.	Qty.	
3	Bracket	825 52 00	1	
4	Pipe	825 59 00	1	
5	Hose unit	8 m	811 20 01	4
		9 m	811 20 02	
		10 m	811 20 03	
		11 m	811 20 04	
		12 m	811 20 05	
		13 m	811 20 06	
		14 m	811 20 07	
		15 m	811 20 08	
		16 m	811 20 09	
		17 m	811 20 10	
		18 m	811 20 11	
		19 m	811 20 12	
		20 m	811 20 13	
		21 m	811 20 14	
		22 m	811 20 15	
		23 m	811 20 16	
		24 m	811 20 17	
		25 m	811 20 18	
		26 m	811 20 19	
		27 m	811 20 20	
28 m	811 20 21			
29 m	811 20 22			
30 m	811 20 23			

Xylem |'zīləm|

- 1) The tissue in plants that brings water upward from the roots;
- 2) a leading global water technology company.

We're a global team unified in a common purpose: creating advanced technology solutions to the world's water challenges. Developing new technologies that will improve the way water is used, conserved, and re-used in the future is central to our work. Our products and services move, treat, analyze, monitor and return water to the environment, in public utility, industrial, residential and commercial building services settings. Xylem also provides a leading portfolio of smart metering, network technologies and advanced analytics solutions for water, electric and gas utilities. In more than 150 countries, we have strong, long-standing relationships with customers who know us for our powerful combination of leading product brands and applications expertise with a strong focus on developing comprehensive, sustainable solutions.

For more information on how Xylem can help you, go to www.xylem.com



Xylem Water Solutions Global
Services AB
361 80 Emmaboda
Sweden
Tel: +46-471-24 70 00
Fax: +46-471-24 74 01
<http://tpi.xylem.com>
[www.xylemwatersolutions.com/
contacts/](http://www.xylemwatersolutions.com/contacts/)

Visit our Web site for the latest version of this document and more information

The original instruction is in English. All non-English instructions are translations of the original instruction.

© 2014 Xylem Inc