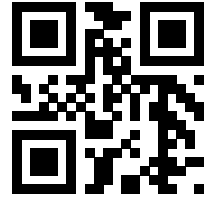
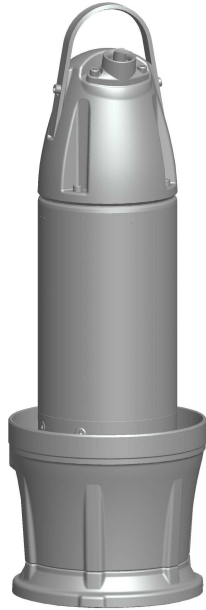
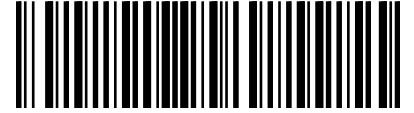


Parts List

884274_8.0



Flygt P7020

7020.090/180

Table of Contents

1	Introduction.....	2
1.1	Specially approved products.....	2
2	Product Description.....	3
2.1	Products included.....	3
2.2	The data plate.....	3
2.3	Approvals.....	4
2.4	Product denomination.....	5
3	Exploded View.....	7
3.1	Drive unit.....	7
3.2	PL.....	8
4	List of Parts.....	10
4.1	7020.090/180.....	10

1 Introduction

Purpose of this manual

The purpose of this manual is to provide necessary information on spare parts and accessories order.

Disclaimer

Always use genuine Flygt parts. The use of other spare parts or accessories can invalidate any claims for warranty or compensation. Xylem does not take any responsibility for damages that are caused by the use of non-original parts. For more information, contact your local sales and service representative.

Data for ordering spare parts

The following information is needed for spare part orders:

- Serial number of the product
- Part number
- Quantity of bulk material, see * in tables

1.1 Specially approved products

Qualification of personnel

Only Xylem or Xylem-authorized service personnel may undertake repair work on specially approved products.

Dimensional accuracy inspection

Spare parts marked with (Ex) after the part number are subject to dimensional accuracy inspection when used in specially approved products.

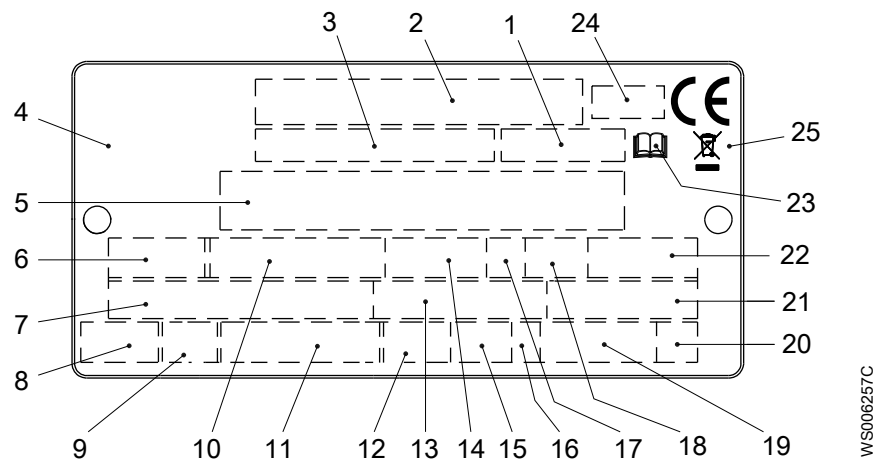
2 Product Description

2.1 Products included

Pump model	Standard	EX
7020.090		X
7020.180	X	

2.2 The data plate

The data plate is a metal label that is located on the main body of the products. The data plate lists key product specifications. Specially approved products also have an approval plate.



1. Curve code or Propeller code
2. Serial number
3. Product number
4. Country of origin
5. Additional information
6. Phase; type of current; frequency
7. Rated voltage
8. Thermal protection
9. Thermal class
10. Rated shaft power
11. International standard
12. Degree of protection
13. Rated current
14. Rated speed
15. Maximum submergence
16. Direction of rotation: L=left, R=right
17. Duty class
18. Duty factor
19. Product weight
20. Locked rotor code letter
21. Power factor
22. Maximum ambient temperature
23. Read installation manual
24. Notified body, only for EN-approved Ex products
25. WEEE-Directive symbol

Figure 1: The data plate

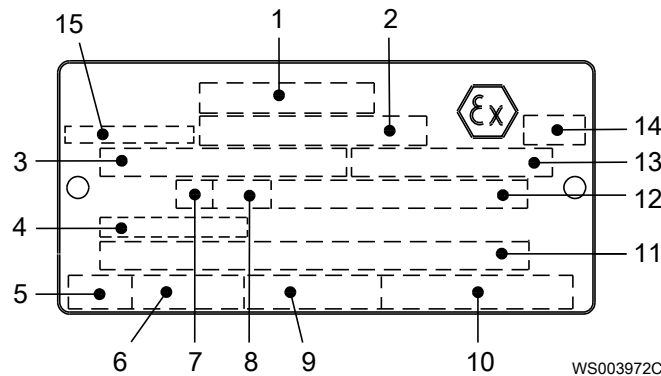
2.3 Approvals

Product approvals for hazardous locations

Pump	Approval
7020.090	European Norm (EN) <ul style="list-style-type: none"> • ATEX Directive • EN IEC 60079-0:2018, EN 60079-1:2014, EN ISO 80079-36:2016, EN ISO 80079-37:2016 • Ex II 2 G Ex db h IIB T3 Gb
	IEC <ul style="list-style-type: none"> • IECEx scheme • IEC 60079-0:2017, IEC 60079-1:2014-06, ISO 80079-36:2016, ISO 80079-37:2016 • Ex db h IIB T3 Gb
	FM (FM Approvals) <ul style="list-style-type: none"> • Explosion proof for use in Class I, Div. 1, Group C and D • Dust ignition proof for use in Class II, Div. 1, Group E, F and G • Suitable for use in Class III, Div. 1, Hazardous Locations
	CSA Ex <ul style="list-style-type: none"> • Explosion proof for use in Class I, Div. 1, Group C and D

EN approval plate

This illustration describes the EN approval plate and the information that is contained in its fields.

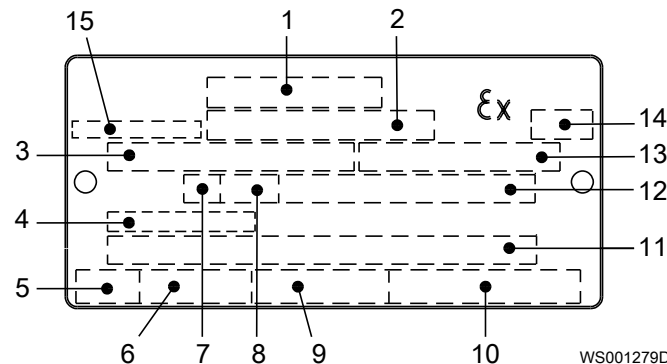


1. Approval
2. Approval authority and Approval number
3. Approved drive unit
4. Cable entry temperature
5. Stall time
6. Starting current or Rated current
7. Duty class
8. Duty factor
9. Input power
10. Rated speed
11. Additional information
12. Maximum ambient temperature
13. Serial number
14. ATEX marking
15. Country of origin

IEC approval plate

This illustration describes the IEC approval plate and the information that is contained in its fields.

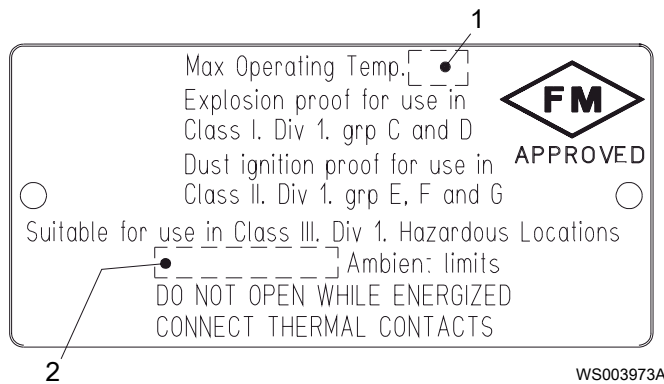
International Norm; not for EU member countries.



1. Approval
2. Approval authority and Approval number
3. Approved drive unit
4. Cable entry temperature
5. Stall time
6. Starting current or Rated current
7. Duty class
8. Duty factor
9. Input power
10. Rated speed
11. Additional information
12. Maximum ambient temperature
13. Serial number
14. ATEX marking
15. Country of origin

FM approval plate

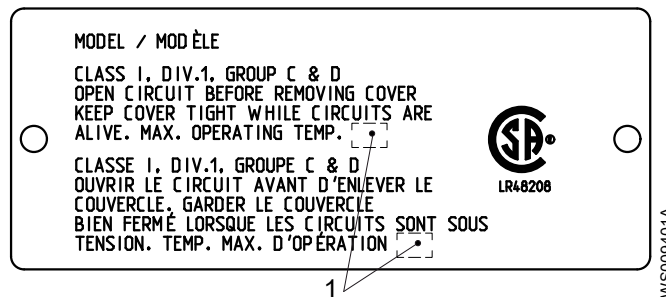
This illustration describes the FM approval plate and the information that is contained in its fields.



- 1. Temperature class
- 2. Maximum ambient temperature

CSA approval plate

This illustration describes the CSA approval plate and the information that is contained in its fields.



- 1. Temperature class

2.4 Product denomination

Reading instruction

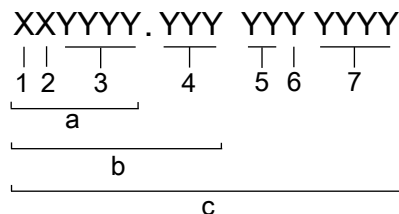
In this section, code characters are illustrated accordingly:

X = letter

Y = digit

The different types of codes are marked up with a, b and c. Code parameters are marked up with numbers.

Codes and parameters

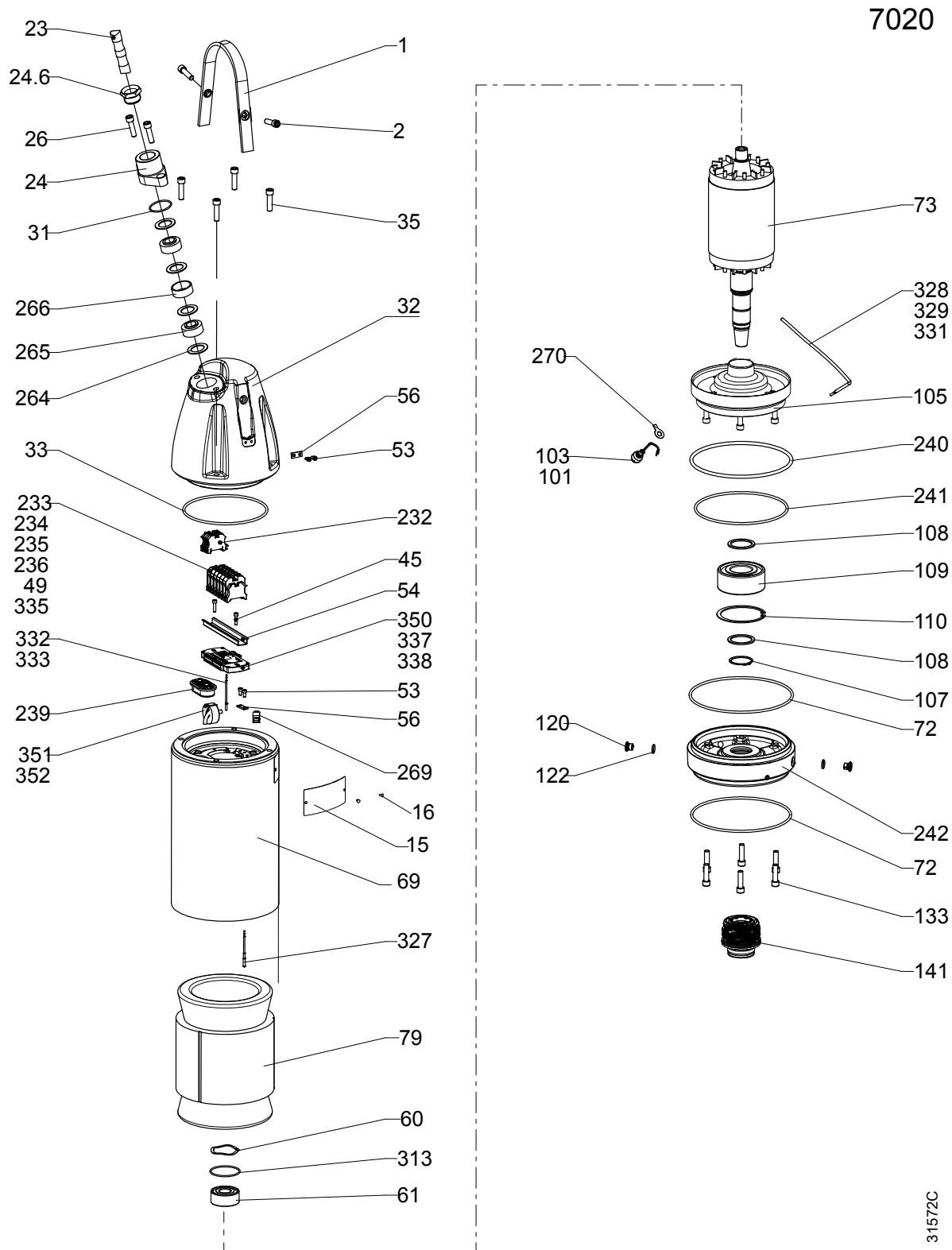


Type of Callout	Number	Indication
Type of code	a	Sales denomination
	b	Product code
	c	Serial number
Parameter	1	Hydraulic end
	2	Type of installation

Type of Callout	Number	Indication
	3	Sales code
	4	Version
	5	Production year
	6	Production cycle
	7	Running number

3 Exploded View

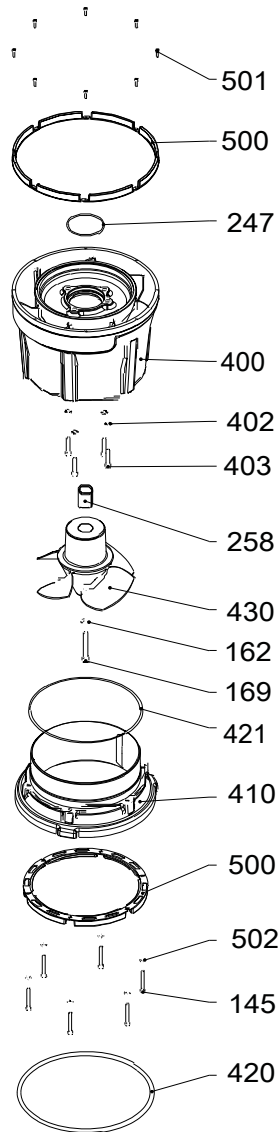
3.1 Drive unit



3.2 PL

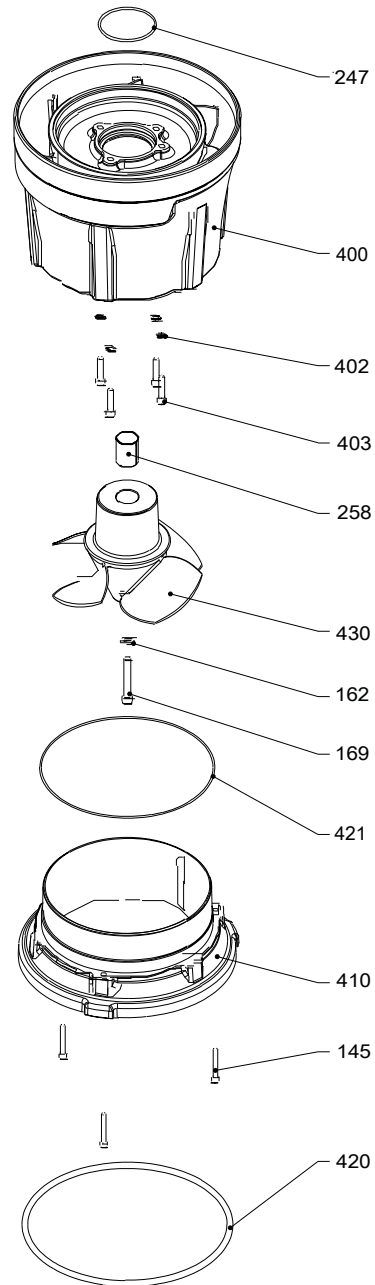
Curve: 410, 412, 420, 422, 430, 432, 440, 442, 450, 452, 610, 612, 620, 622, 630, 632, 640, 642, 650, 652

PL 7020, zinc anodes



31573

PL 7020, without zinc anodes



31574

4 List of Parts

4.1 7020.090/180

Spare parts marked with EX after the part number are subject to dimensional accuracy inspection.

Pos. No	Part. No	Type	Denomination	Qty/Version	
				090	180
1	651 05 00	(Ex)	Lifting handle	1	1
2	83 04 53		Hex.socket hd screw M12X45-A4-80	2	2
7	83 45 52		Cable tie 292X3.5 MM	1	1
7	83 45 59		Cable tie 200X2.4 PA 6/6-55+105	1	1
9	81 65 46		Marking plate 55 GW (FUNCTIONAL GROUND)	1	1
9	83 93 50		Marking strip 5-GW (T1, T2, T15, T16)	1	1
9	794 41 00		Connection plate	1	1
9	85 06 96		Marking plate	1	
9	828 74 00		Connection plate	1	1
9	83 93 51		Marking strip W5,V5,U5,V2,W1,U2,V1,W2,U	1	1
9	794 42 00		Connection plate	1	1
11	83 02 73		Hex.socket hd screw M6X12-A4-70	2	
13	642 16 00	(Ex)	Earthing plate	1	
14	94 19 30		Control cable s-flex 25X1.5 OD=19.4-21.4 MM	1	1
15	630 68 00	(Ex)	Data plate USE 6306801 AS SPARE PART	2	2
15	630 69 00	(Ex)	Certificate plate EN	1	
15	630 70 00	(Ex)	Certificate plate FM	1	
15	630 69 01	(Ex)	Certificate plate IECEX	1	
15	801 03 02	(Ex)	Name plate	1	
16	82 20 88		Drive screw 4X5-A2/A4	4	4
16	82 20 88		Drive screw 4X5-A2/A4	2	
23	94 20 59		Motor cable subcab 4G2.5+2X1.5	*	*
23	94 20 60		Motor cable subcab 4G4+2X1.5	*	*
23	94 20 56		Motor cable subcab 4G6+2X1.5	*	*
23	94 19 81		Motor cable subcab 4G10+S(2X0.5)	*	*
23	94 19 82		Motor cable subcab 4G16+S(2X0.5)	*	*
23	94 20 82		Motor cable subcab 7G2.5+2X1.5	*	*
23	94 20 80		Motor cable subcab 7G4+2X1.5	*	*

Pos. No	Part. No	Type	Denomination	Qty/Version	
				090	180
23	94 19 80		Motor cable subcab 7G6+S(2X0.5)	*	*
23	94 19 83		Motor cable subcab 4G25+S(2X0.5)	*	*
23	94 19 90		Motor cable subcab S3X2.5+3X2.5/3+S(4X0.5)	*	*
23	94 19 91		Motor cable subcab S3X6+3X6/3+S(4X0.5)	*	*
23	94 19 93		Motor cable subcab S3X16+3X16/3+S(4X0.5)	*	*
24	642 17 01	(Ex)	Entrance flange (14)-32 MM	1	
24	597 87 01	(Ex)	Entrance flange ISO G1 1/4, (17)-23 MM	1	1
	24,6 633 11 01		Gland screw ISO G1 1/4"	1	1
24	597 87 04	(Ex)	Entrance flange ISO 228/1-G2, (17)-23 MM	1	1
24	597 87 11	(Ex)	Entrance flange 1 1/2-11.5 NPT, (17)-23 M	1	1
	24,6 633 11 04		Gland screw 1 1/2" NPT	1	1
24	597 87 08	(Ex)	Entrance flange 2-11.5 NPT, (17)-23 MM	1	1
24	642 17 00		Entrance flange (20)-32 MM		1
26	83 04 53		Hex.socket hd screw M12X45- A4-80	2	2
31	82 74 63		O-ring 49.5X3 NBR	1	1
32	763 94 01	(Ex)	Entrance cover	1	
32	763 94 00		Entrance cover		1
33	82 74 92		O-ring 194.3X5.7 NBR	1	1
35	83 04 53		Hex.socket hd screw M12X45- A4-80	4	4
45	82 00 11		Hex.socket hd screw M6X12- A2-70	2	2
45	82 00 17		Hex.socket hd screw M6X25- A2-70	2	2
49	83 42 48		End sleeve H16/24	3	3
49	83 42 49		End sleeve H25/30	3	3
51	83 42 62		Closed-end splice 0.33-0.82 (AWG 22-18)	2	2
53	82 00 11		Hex.socket hd screw M6X12- A2-70	2	2
54	651 04 02		Rail	1	1
56	642 16 00	(Ex)	Earthing plate	1	1
60	82 56 25		Spring washer 71.5X59X0.55 MM	1	1
61	83 30 16		Ball bearing 30X72X30.2 MM	1	1
69	650 90 29	(Ex)	Stator housing	1	
69	650 90 28		Stator housing		1
72	82 74 97		O-ring 239.5X5.7 NBR	2	2

4 List of Parts

Pos. No	Part. No	Type	Denomination	Qty/Version	
				090	180
73	652 46 03	(Ex)	Shaft unit	1	1
			Stator 6-leads 3-phase 60 Hz 4-poles 380V D 660V Y P2=20kW/27hp		
			Stator 9-leads 3-phase 60 Hz 4-poles 230V Y// 460V YSER P2=20kW/27hp		
			Stator 6-leads 3-phase 50 Hz 4-poles 500V D P2=16kW		
			Stator 6-leads 3-phase 60 Hz 4-poles 575V-600V D P2=20kW/27hp		
			Stator 6-leads 3-phase 50 Hz 4-poles 415V-440V D P2=16kW		
			Stator 6-leads 3-phase 50 Hz 4-poles 380V-400V D 660V-690V Y P2=16kW		
			Stator 6-leads 3-phase 60 Hz 4-poles 460V-480V D P2=20kW/27hp		
			Stator 6-leads 3-phase 50 Hz 4-poles 415V-440V D P2=16kW		
			Stator 6-leads 3-phase 50 Hz 4-poles 230V D 400V Y P2=16kW		
73	652 46 04	(Ex)	Shaft unit	1	1
			Stator 6-leads 3-phase 50 Hz 4-poles 415V-440V D P2=20kW		
			Stator 6-leads 3-phase 50 Hz 4-poles 500V D P2=20kW		
			Stator 6-leads 3-phase 60 Hz 4-poles 575V D P2=24kW/32hp		
			Stator 6-leads 3-phase 50 Hz 4-poles 230V D 400V Y P2=20kW		
			Stator 9-leads 3-phase 60 Hz 4-poles 230V Y// 460V YSER P2=24kW/32hp		
			Stator 6-leads 3-phase 60 Hz 4-poles 380V D 660V Y P2=24kW/32hp		
			Stator 6-leads 3-phase 50 Hz 4-poles 415V-440V D P2=20kW		
			Stator 6-leads 3-phase 50 Hz 4-poles 380V-400V D 660V-690V Y P2=20kW		
			Stator 6-leads 3-phase 60 Hz 4-poles 440V-460V D P2=24kW/32hp		

Pos. No	Part. No	Type	Denomination	Qty/Version	
				090	180
73	652 46 05	(Ex)	Shaft unit	1	1
			Stator 6-leads 3-phase 50 Hz 4-poles 415V-440V D P2=25kW		
			Stator 6-leads 3-phase 50 Hz 4-poles 380V-400V D 660V-690V Y P2=25kW		
			Stator 6-leads 3-phase 60 Hz 4-poles 440V-480V D P2=30kW/40hp		
			Stator 9-leads 3-phase 60 Hz 4-poles 230V Y// 460V YSER P2=30kW/40hp		
			Stator 6-leads 3-phase 50 Hz 4-poles 415V-440V D P2=25kW		
			Stator 6-leads 3-phase 50 Hz 4-poles 500V D P2=25kW		
			Stator 6-leads 3-phase 60 Hz 4-poles 575V-600V D P2=30kW/40hp		
			Stator 6-leads 3-phase 60 Hz 4-poles 380V D 660V Y P2=30kW/40hp		
			Stator 6-leads 3-phase 50 Hz 4-poles 230V D 400V Y P2=25kW		

Pos. No	Part. No	Type	Denomination	Qty/Version		
				090	180	
73	649 74 00	(Ex)	Shaft unit	Stator 6-leads 3-phase 50 Hz 6-poles 415V-440V D P2=6kW Stator 6-leads 3-phase 50 Hz 6-poles 415V-440V D P2=16kW Stator 6-leads 3-phase 50 Hz 6-poles 500V D P2=6kW Stator 6-leads 3-phase 50 Hz 6-poles 660V-690V D P2=6kW Stator 6-leads 3-phase 50 Hz 6-poles 380V-400V D P2=6kW Stator 6-leads 3-phase 50 Hz 6-poles 220V-230V D P2=6kW Stator 6-leads 3-phase 50 Hz 6-poles 415V-440V D P2=6kW Stator 9-leads 3-phase 60 Hz 6-poles 230V Y// 460V YSER P2=20kW/27hp Stator 6-leads 3-phase 50 Hz 6-poles 415V-440V D P2=16kW Stator 6-leads 3-phase 50 Hz 6-poles 500V D P2=16kW Stator 6-leads 3-phase 60 Hz 6-poles 575V-600V D P2=20kW/27hp Stator 6-leads 3-phase 50 Hz 6-poles 230V D 400V Y P2=16kW Stator 6-leads 3-phase 60 Hz 6-poles 380V D P2=20kW/27hp Stator 6-leads 3-phase 50 Hz 6-poles 380V-400V D 660V-690V Y P2=16kW Stator 6-leads 3-phase 60 Hz 6-poles 440V-480V D P2=20kW/27hp	1	1
79	647 25 01	(Ex)	Stator 25-14-4a	Stator 6-leads 3-phase 50 Hz 4-poles 380V-400V D 660V-690V Y P2=16kW Stator 6-leads 3-phase 60 Hz 4-poles 460V-480V D P2=20kW/27hp	1	1
79	647 25 02	(Ex)	Stator 25-14-4a	Stator 6-leads 3-phase 50 Hz 4-poles 230V D 400V Y P2=16kW	1	1
79	647 25 05	(Ex)	Stator 25-14-4a	Stator 6-leads 3-phase 50 Hz 4-poles 415V-440V D P2=16kW	1	1
79	647 25 07	(Ex)	Stator 25-14-4a	Stator 9-leads 3-phase 60 Hz 4-poles 230V Y// 460V YSER P2=20kW/27hp	1	1
79	647 25 08	(Ex)	Stator 25-14-4a	Stator 6-leads 3-phase 60 Hz 4-poles 380V D 660V Y P2=20kW/27hp	1	1

Pos. No	Part. No	Type	Denomination	Qty/Version		
				090	180	
79	647 25 06	(Ex)	Stator 25-14-4a	Stator 6-leads 3-phase 50 Hz 4-poles 500V D P2=16kW Stator 6-leads 3-phase 60 Hz 4-poles 575V-600V D P2=20kW/27hp	1	1
79	647 62 01	(Ex)	Stator 25-17-4a	Stator 6-leads 3-phase 50 Hz 4-poles 380V-400V D 660V-690V Y P2=20kW Stator 6-leads 3-phase 60 Hz 4-poles 440V-460V D P2=24kW/32hp	1	1
79	647 62 02	(Ex)	Stator 25-17-4a	Stator 6-leads 3-phase 50 Hz 4-poles 230V D 400V Y P2=20kW	1	1
79	647 62 05	(Ex)	Stator 25-17-4a	Stator 6-leads 3-phase 50 Hz 4-poles 415V-440V D P2=20kW	1	1
79	647 62 07	(Ex)	Stator 25-17-4a	Stator 9-leads 3-phase 60 Hz 4-poles 230V Y// 460V YSER P2=24kW/32hp	1	1
79	647 62 13	(Ex)	Stator 25-17-4a	Stator 6-leads 3-phase 60 Hz 4-poles 380V D 660V Y P2=24kW/32hp	1	1
79	647 62 06	(Ex)	Stator 25-17-4a	Stator 6-leads 3-phase 50 Hz 4-poles 500V D P2=20kW Stator 6-leads 3-phase 60 Hz 4-poles 575V D P2=24kW/32hp	1	1
79	692 99 01	(Ex)	Stator 25-19-4a	Stator 6-leads 3-phase 50 Hz 4-poles 380V-400V D 660V-690V Y P2=25kW Stator 6-leads 3-phase 60 Hz 4-poles 440V-480V D P2=30kW/40hp	1	1
79	692 99 02	(Ex)	Stator 25-19-4a	Stator 6-leads 3-phase 50 Hz 4-poles 230V D 400V Y P2=25kW	1	1
79	692 99 05	(Ex)	Stator 25-19-4a	Stator 6-leads 3-phase 50 Hz 4-poles 415V-440V D P2=25kW	1	1
79	692 99 07	(Ex)	Stator 25-19-4a	Stator 9-leads 3-phase 60 Hz 4-poles 230V Y// 460V YSER P2=30kW/40hp	1	1
79	692 99 06	(Ex)	Stator 25-19-4a	Stator 6-leads 3-phase 50 Hz 4-poles 500V D P2=25kW Stator 6-leads 3-phase 60 Hz 4-poles 575V-600V D P2=30kW/40hp	1	1
79	692 99 08	(Ex)	Stator 25-19-4a	Stator 6-leads 3-phase 60 Hz 4-poles 380V D 660V Y P2=30kW/40hp	1	1
79	777 70 01	(Ex)	Stator 25-18-6f	Stator 6-leads 3-phase 50 Hz 6-poles 380V-400V D P2=6kW	1	1
79	777 70 02	(Ex)	Stator 25-18-6f	Stator 6-leads 3-phase 50 Hz 6-poles 220V-230V D P2=6kW	1	1
79	777 70 03	(Ex)	Stator 25-18-6f	Stator 6-leads 3-phase 50 Hz 6-poles 415V-440V D P2=6kW	1	1

Pos. No	Part. No	Type	Denomination	Qty/Version		
				090	180	
79	777 70 04	(Ex)	Stator 25-18-6f	Stator 6-leads 3-phase 50 Hz 6-poles 500V D P2=6kW	1	1
79	777 70 05	(Ex)	Stator 25-18-6f	Stator 6-leads 3-phase 50 Hz 6-poles 660V-690V D P2=6kW	1	1
79	660 06 01	(Ex)	Stator 25-18-6b	Stator 6-leads 3-phase 50 Hz 6-poles 380V-400V D 660V-690V Y P2=16kW Stator 6-leads 3-phase 60 Hz 6-poles 440V-480V D P2=20kW/27hp	1	1
79	660 06 02	(Ex)	Stator 25-18-6b	Stator 6-leads 3-phase 50 Hz 6-poles 230V D 400V Y P2=16kW	1	1
79	660 06 05	(Ex)	Stator 25-18-6b	Stator 6-leads 3-phase 50 Hz 6-poles 415V-440V D P2=16kW	1	1
79	660 06 07	(Ex)	Stator 25-18-6b	Stator 9-leads 3-phase 60 Hz 6-poles 230V Y// 460V YSER P2=20kW/27hp	1	1
79	660 06 08	(Ex)	Stator 25-18-6b	Stator 6-leads 3-phase 60 Hz 6-poles 380V D P2=20kW/27hp	1	1
79	660 06 06	(Ex)	Stator 25-18-6b	Stator 6-leads 3-phase 50 Hz 6-poles 500V D P2=16kW Stator 6-leads 3-phase 60 Hz 6-poles 575V-600V D P2=20kW/27hp	1	1
79	657 94 05	(Ex)	Stator 25-14-4a	Stator 6-leads 3-phase 50 Hz 4-poles 415V-440V D P2=16kW	1	1
79	657 95 05	(Ex)	Stator 25-17-4a	Stator 6-leads 3-phase 50 Hz 4-poles 415V-440V D P2=20kW	1	1
79	696 41 05	(Ex)	Stator 25-19-4a	Stator 6-leads 3-phase 50 Hz 4-poles 415V-440V D P2=25kW	1	1
79	678 83 05	(Ex)	Stator 25-18-6b	Stator 6-leads 3-phase 50 Hz 6-poles 415V-440V D P2=16kW	1	1
79	780 10 03		Stator 25-18-6f	Stator 6-leads 3-phase 50 Hz 6-poles 415V-440V D P2=6kW	1	1
101	650 51 00		Cable unit FLS10		1	1
103	663 04 00	(Ex)	Level sensor FLS10		1	
103	791 99 00		Level sensor			1
105	650 80 01	(Ex)	Bearing holder		1	
105	650 80 00		Bearing holder			1
107	82 59 12		Retaining ring SGA 55		1	1
108	82 44 19		Supporting washer 55X68X3		2	2
109	83 30 21		Ball bearing 3311A-2Z/C3VT113		1	1
110	83 07 63		Retaining ring 120/2,85		1	1
120	642 13 00		Plug		3	3
122	82 76 85		O-ring 17X3 NBR		3	3
133	83 04 53		Hex.socket hd screw M12X45-A4-80		6	6
141	619 64 30		Mechanical seal dbl. WCCR/WCCR, WCCR/WCCR FPM		1	1

Pos. No	Part. No	Type	Denomination	Qty/Version	
				090	180
141	619 64 31		Mechanical seal dbl. WCCR/ WCCR, RSIC/RSIC FPM	1	1
145	83 04 43		Hex.socket hd screw M8X60- A4-80	3	3
145	83 04 43		Hex.socket hd screw M8X60- A4-80	6	6
162	82 38 00		Plain washer 13X24X4- A4-170HV	1	1
169	83 04 66		Hex.socket hd screw M12X80- A4-80	1	1
229	667 40 01		Sticker	2	2
231	93 00 77		Shrink hose ID=6.4 MM	*	*
231	93 00 78		Shrink hose ID=9.5 MM	*	*
232	83 53 58		Terminal clamp WDU6/10	3	3
232	83 53 58		Terminal clamp WDU6/10	5	5
232	83 42 65		Terminal block 600V/20A UL	2	2
232	83 53 58		Terminal clamp WDU6/10	2	
232	83 53 58		Terminal clamp WDU6/10	4	4
233	83 53 61		Terminal clamp WDU16.1000V	6	6
233	83 53 17		Terminal clamp WDU35/IK/ZA	6	6
233	83 53 17		Terminal clamp WDU35/IK/ZA	8	8
234	83 53 67		Cross connection WQV 16N/2	3	3
234	650 20 02		Cross connection WQV 16N/10	1	1
234	83 53 49		Cross connection WQV 35N /2	3	3
234	650 20 03		Cross connection WQV 35N/10	1	1
234	83 53 49		Cross connection WQV 35N /2	4	4
235	83 53 54		End support WEW 35/2	2	2
236	83 53 50		Partition	1	1
239	800 45 01		El.lead through unit 9X + 8X	1	1
240	607 48 04	(Ex)	Spring	1	1
241	82 74 95		O-ring 219.3X5.7 NBR	1	1
242	763 91 01	(Ex)	Adapter	1	
242	763 91 00		Adapter		1
247	82 95 70		O-ring 92X4 FPM	1	1
258	720 15 00		Sleeve unit	1	1
	258,1 643 66 00		Adjustment screw	1	1
	258,2 651 03 01		Sleeve	1	1
264	82 40 81		Plain washer 32.5X52X2-A2-70	4	4
264	82 40 82		Plain washer 34.5X52X2-A2-70	4	4
264	82 40 69		Plain washer 35.5X52X2-A2-70	4	4
265	84 18 00		Seal sleeve (14)-17 MM NBR	2	2
265	84 18 02		Seal sleeve (20)-23 MM NBR	2	2
265	84 18 03		Seal sleeve (23)-26 MM NBR	2	2
265	84 18 04		Seal sleeve (26)-29 MM NBR	2	2
265	84 18 06		Seal sleeve (32)-35 MM NBR	2	2

Pos. No	Part. No	Type	Denomination	Qty/Version	
				090	180
265	84 18 01		Seal sleeve (17)-20 MM NBR	2	2
265	84 18 05		Seal sleeve (29)-32 MM NBR	2	2
266	597 98 02	(Ex)	Sleeve	1	1
269	518 89 02	(Ex)	Leakage sensor (FLS)	1	1
270	608 31 00	(Ex)	Lock washer	1	
313	82 71 72		O-ring 71.2X3 FPM	1	1
327	83 97 97		Temperature sensor	1	1
328	665 86 00		Temperature sensor PT100, 2-LEADS 1500MM	1	1
329	718 81 00		Special washer	1	1
331	94 05 81		Insulating hose D=5 MM	*	*
332	665 86 00		Temperature sensor PT100, 2-LEADS 1500MM	1	1
333	718 81 00		Special washer	1	1
335	83 53 77		Terminal clamp WPE 2.5 WS	1	1
336	83 42 36		End sleeve 0.75 MM2; L=6 MM	2	2
337	83 43 60		Cable lug UL/CSA 0.50-1.65 MM2 M4	1	1
337	94 03 34		Shrink hose ID=6.4 MM	*	*
338	83 45 59		Cable tie 200X2.4 PA 6/6 -55+105	1	1
350	823 05 00		Pump monitoring	1	1
351	82 62 75		Transformer	1	1
352	83 45 59		Cable tie 200X2.4 PA 6/6 -55+105	1	1
400	763 87 00		Pump housing	1	1
400	763 87 10		Pump housing Zinc anodes	1	1
402	583 32 03		Seal ring HNBR	4	4
403	83 03 27		Hex.socket hd screw M10X45-A4-70	4	4
410	763 88 00		Bell mouth D = 274 mm without Zinc anodes	1	1
410	763 88 01		Bell mouth D = 266 mm without Zinc anodes	1	1
410	763 88 10		Bell mouth D = 274 mm with Zinc anodes	1	1
410	763 88 11		Bell mouth D = 266 mm with Zinc anodes	1	1
420	82 76 71		O-ring 339X10 NBR	1	1
421	82 78 59		O-ring 290X3 NBR	1	1
430	763 80 10		Propeller Material: stainless steel (ASTM CF-8M) Number of blades: 4 Outer diameter: 273 mm Angle: 8 3-phase 50 Hz Valid for 50 and 60 Hz	1	1
430	850 99 10		Propeller Material: Hard-Iron™ Number of blades: 4 Outer diameter: 273 mm Angle: 8 3-phase 50 Hz Valid for 50 and 60 Hz	1	1

Pos. No	Part. No	Type	Denomination	Qty/Version		
				090	180	
430	763 80 12		Propeller	Material: stainless steel (ASTM CF-8M) Number of blades: 4 Outer diameter: 265 mm Angle: 8 3-phase 50 Hz Valid for 50 and 60 Hz	1	1
430	850 99 12		Propeller	Material: Hard-Iron™ Number of blades: 4 Outer diameter: 265 mm Angle: 8 3-phase 50 Hz Valid for 50 and 60 Hz	1	1
430	763 80 20		Propeller	Material: stainless steel (ASTM CF-8M) Number of blades: 4 Outer diameter: 273 mm Angle: 12 3-phase 50 Hz Valid for 50 and 60 Hz	1	1
430	850 99 20		Propeller	Material: Hard-Iron™ Number of blades: 4 Outer diameter: 273 mm Angle: 12 3-phase 50 Hz Valid for 50 and 60 Hz	1	1
430	763 80 22		Propeller	Material: stainless steel (ASTM CF-8M) Number of blades: 4 Outer diameter: 265 mm Angle: 12 3-phase 50 Hz Valid for 50 and 60 Hz	1	1
430	850 99 22		Propeller	Material: Hard-Iron™ Number of blades: 4 Outer diameter: 273 mm Angle: 12 3-phase 50 Hz Valid for 50 and 60 Hz	1	1
430	763 80 30		Propeller	Material: stainless steel (ASTM CF-8M) Number of blades: 4 Outer diameter: 273 mm Angle: 16 3-phase 50 Hz Valid for 50 and 60 Hz	1	1
430	850 99 30		Propeller	Material: Hard-Iron™ Number of blades: 4 Outer diameter: 273 mm Angle: 16 3-phase 50 Hz Valid for 50 and 60 Hz	1	1
430	763 80 32		Propeller	Material: stainless steel (ASTM CF-8M) Number of blades: 4 Outer diameter: 265 mm Angle: 16 3-phase 50 Hz Valid for 50 and 60 Hz	1	1
430	850 99 32		Propeller	Material: Hard-Iron™ Number of blades: 4 Outer diameter: 265 mm Angle: 16 3-phase 50 Hz Valid for 50 and 60 Hz	1	1
430	763 80 40		Propeller	Material: stainless steel (ASTM CF-8M) Number of blades: 4 Outer diameter: 273 mm Angle: 20 3-phase 50 Hz Valid for 50 and 60 Hz	1	1
430	850 99 40		Propeller	Material: Hard-Iron™ Number of blades: 4 Outer diameter: 273 mm Angle: 20 3-phase 50 Hz Valid for 50 and 60 Hz	1	1

4 List of Parts

Pos. No	Part. No	Type	Denomination	Qty/Version		
				090	180	
430	763 80 42		Propeller	Material: stainless steel (ASTM CF-8M) Number of blades: 4 Outer diameter: 265 mm Angle: 20 3-phase 50 Hz Valid for 50 and 60 Hz	1	1
430	850 99 42		Propeller	Material: Hard-Iron™ Number of blades: 4 Outer diameter: 265 mm Angle: 20 3-phase 50 Hz Valid for 50 and 60 Hz	1	1
430	763 80 50		Propeller	Material: stainless steel (ASTM CF-8M) Number of blades: 4 Outer diameter: 273 mm Angle: 24 3-phase 50 Hz Valid for 50 and 60 Hz	1	1
430	850 99 50		Propeller	Material: Hard-Iron™ Number of blades: 4 Outer diameter: 273 mm Angle: 24 3-phase 50 Hz Valid for 50 and 60 Hz	1	1
430	763 80 52		Propeller	Material: stainless steel (ASTM CF-8M) Number of blades: 4 Outer diameter: 265 mm Angle: 24 3-phase 50 Hz Valid for 50 and 60 Hz	1	1
430	850 99 52		Propeller	Material: Hard-Iron™ Number of blades: 4 Outer diameter: 265 mm Angle: 24 3-phase 50 Hz Valid for 50 and 60 Hz	1	1
440	772 14 00		Sticker		2	2
441	772 14 01		Sticker		1	1
500	763 30 00		Anode	Bell mouth	6	6
500	763 31 00		Anode	Pump housing	8	8
501	83 02 62		Hex.socket hd screw M5X18-A4-70		8	8
502	82 35 74		Plain washer 8.4X16X1.8-A4-170HV		6	6
800	83 83 25		O-ring kits		1	1
900	786 35 00		Basic repair kit		1	1
901	90 17 52		Oil ISO VG 32		*	*
912	82 76 85		O-ring 17X3 NBR		3	3

Xylem |'zīləm|

- 1) The tissue in plants that brings water upward from the roots;
- 2) a leading global water technology company.

We're a global team unified in a common purpose: creating advanced technology solutions to the world's water challenges. Developing new technologies that will improve the way water is used, conserved, and re-used in the future is central to our work. Our products and services move, treat, analyze, monitor and return water to the environment, in public utility, industrial, residential and commercial building services settings. Xylem also provides a leading portfolio of smart metering, network technologies and advanced analytics solutions for water, electric and gas utilities. In more than 150 countries, we have strong, long-standing relationships with customers who know us for our powerful combination of leading product brands and applications expertise with a strong focus on developing comprehensive, sustainable solutions.

For more information on how Xylem can help you, go to www.xylem.com



Xylem Water Solutions Global
Services AB 556782-9253
361 80 Emmaboda
Sweden
Tel: +46-471-24 70 00
Fax: +46-471-24 74 01
<http://tpi.xylem.com>
[www.xylemwatersolutions.com/
contacts/](http://www.xylemwatersolutions.com/contacts/)

Visit our Web site for the latest version of this document and more information

The original instruction is in English. All non-English instructions are translations of the original instruction.

© 2013 Xylem Inc