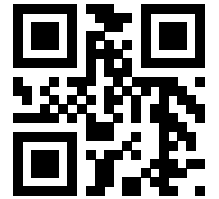




Parts List

883685_6.0



Flygt 4530

Table of Contents

1	Introduction.....	2
1.1	Specially approved products.....	2
2	Product Description.....	3
2.1	The data plate.....	3
2.2	Approvals.....	3
2.3	Product denomination.....	5
3	Exploded View.....	6
3.1	Drive unit.....	6
3.2	Hydraulic unit.....	7
3.3	Installation components.....	8
4	List of Parts.....	10
4.1	4530.010/090.....	10

1 Introduction

Purpose of this manual

The purpose of this manual is to provide necessary information on spare parts and accessories order.

Disclaimer

Always use genuine Flygt parts. The use of other spare parts or accessories can invalidate any claims for warranty or compensation. Xylem does not take any responsibility for damages that are caused by the use of non-original parts. For more information, contact your local sales and service representative.

Data for ordering spare parts

The following information is needed for spare part orders:

- Serial number of the product
- Part number
- Quantity of bulk material, see * in tables

1.1 Specially approved products

Qualification of personnel

Only Xylem or Xylem-authorized service personnel may undertake repair work on specially approved products.

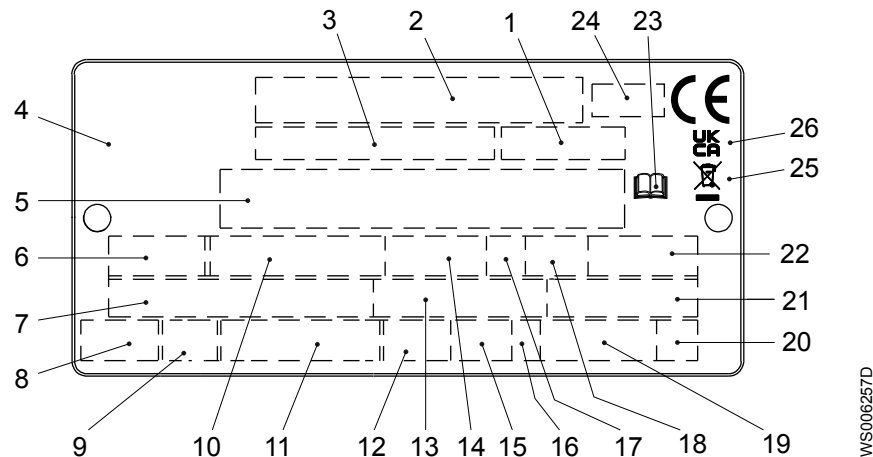
Dimensional accuracy inspection

Spare parts marked with (Ex) after the part number are subject to dimensional accuracy inspection when used in specially approved products.

2 Product Description

2.1 The data plate

The data plate is a metal label that is located on the main body of the products. The data plate lists key product specifications. Specially approved products also have an approval plate.



1. Curve code or Propeller code
2. Serial number
3. Product number
4. Country of origin
5. Additional information
6. Phase; type of current; frequency
7. Rated voltage
8. Thermal protection
9. Thermal class
10. Rated shaft power
11. International standard
12. Degree of protection
13. Rated current
14. Rated speed
15. Maximum submergence
16. Direction of rotation: L=left, R=right
17. Duty class
18. Duty factor
19. Product weight
20. Locked rotor code letter
21. Power factor
22. Maximum ambient temperature
23. Read installation manual
24. Notified body, only for EN-approved Ex products
25. WEEE-Directive symbol
26. UKCA marking

Figure 1: The data plate

2.2 Approvals

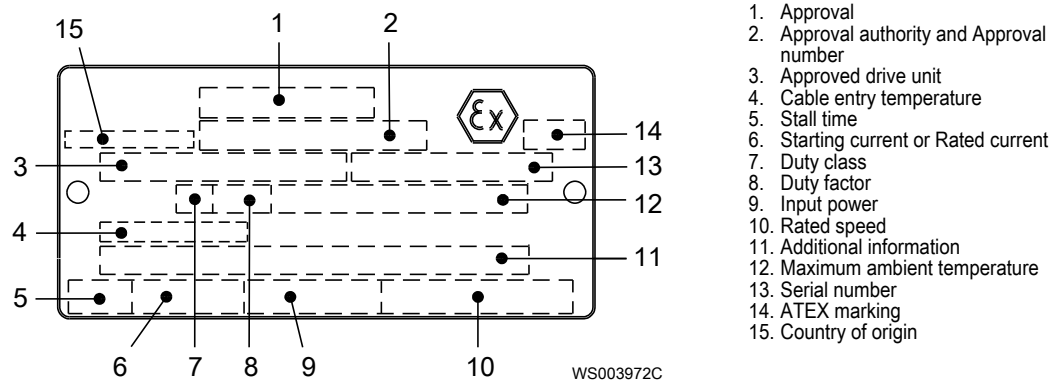
Product approvals for hazardous locations

Product	Approval
4530.090	European Norm (EN) <ul style="list-style-type: none"> • ATEX Directive • EN IEC 60079-0:2018, EN 60079-1:2014, EN ISO 80079-36:2016, EN ISO 80079-37:2016 • Ex II 2 G Ex db h IIB T4 Gb

Product	Approval
	IEC <ul style="list-style-type: none"> • IECEx scheme • IEC 60079-0:2017, IEC 60079-1:2014-06, ISO 80079-36:2016, ISO 80079-37:2016 • Ex db h IIB T4 Gb
	FM (FM Approvals) <ul style="list-style-type: none"> • Explosion proof for use in Class I, Div. 1, Group C and D • Dust ignition proof for use in Class II, Div. 1, Group E, F and G • Suitable for use in Class III, Div. 1, Hazardous Locations

EN approval plate

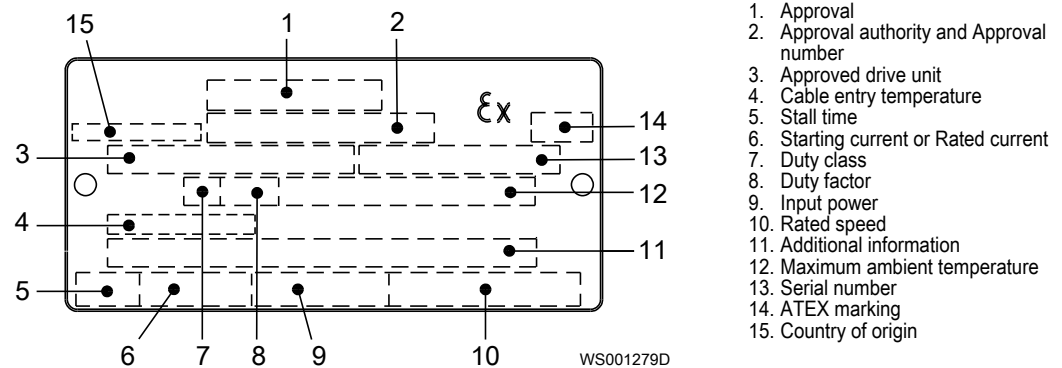
This illustration describes the EN approval plate and the information that is contained in its fields.



IEC approval plate

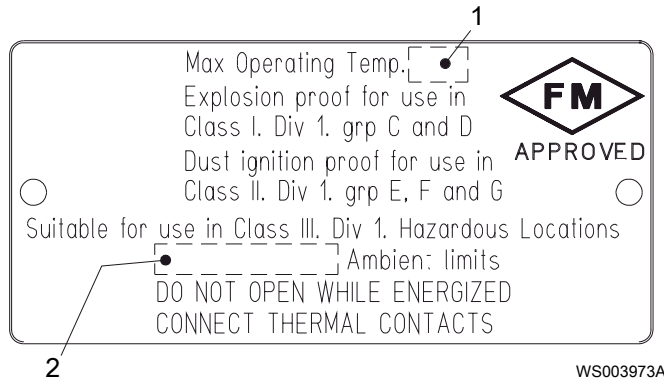
This illustration describes the IEC approval plate and the information that is contained in its fields.

International Norm; not for EU member countries.



FM approval plate

This illustration describes the FM approval plate and the information that is contained in its fields.



- 1. Temperature class
- 2. Maximum ambient temperature

2.3 Product denomination

Reading instruction

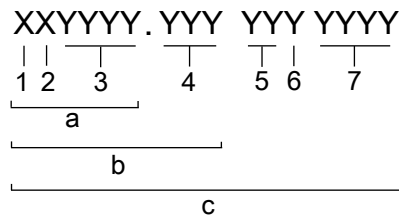
In this section, code characters are illustrated accordingly:

X = letter

Y = digit

The different types of codes are marked up with a, b and c. Code parameters are marked up with numbers.

Codes and parameters

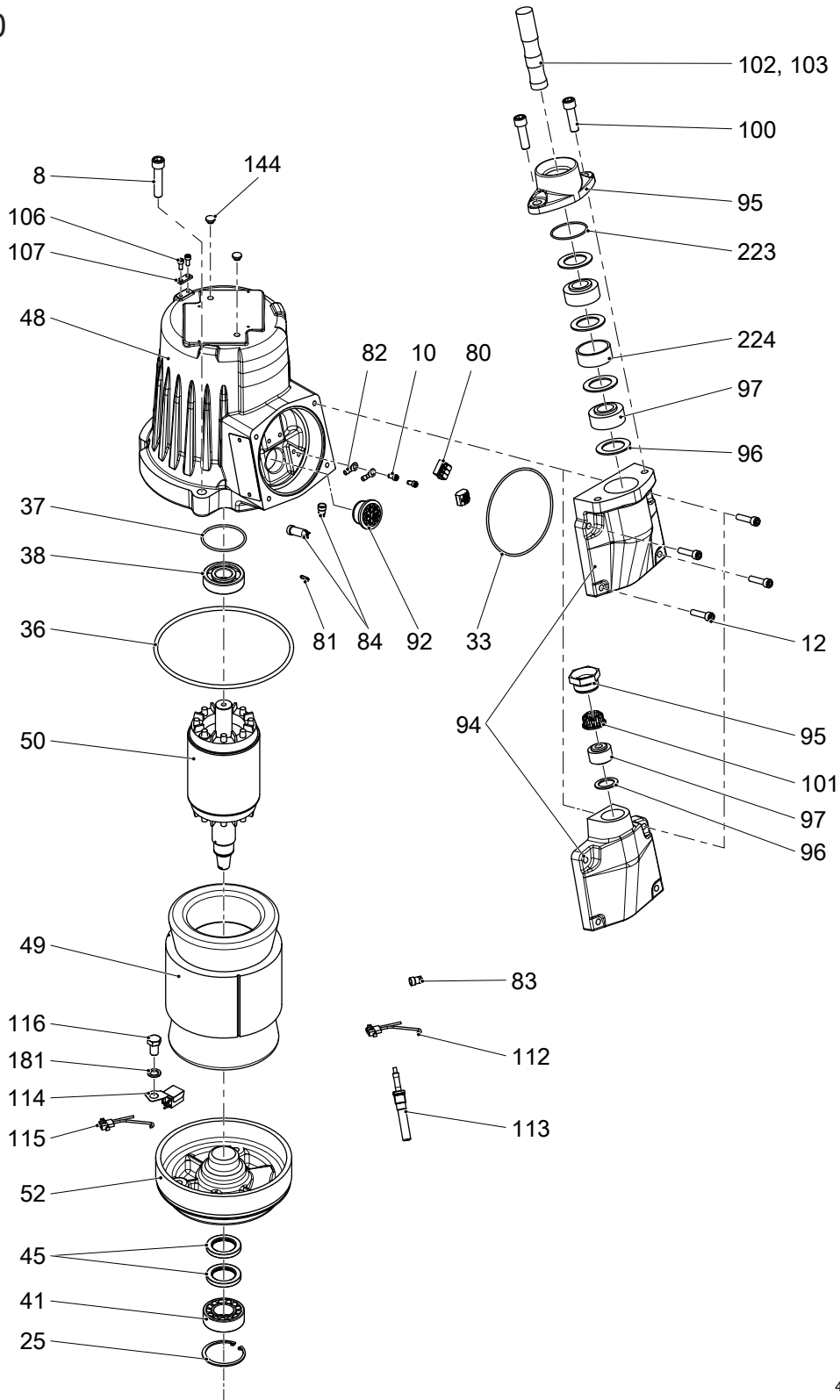


Type of Callout	Number	Indication
Type of code	a	Sales denomination
	b	Product code
	c	Serial number
Parameter	1	Hydraulic end
	2	Type of installation
	3	Sales code
	4	Version
	5	Production year
	6	Production cycle
	7	Running number

3 Exploded View

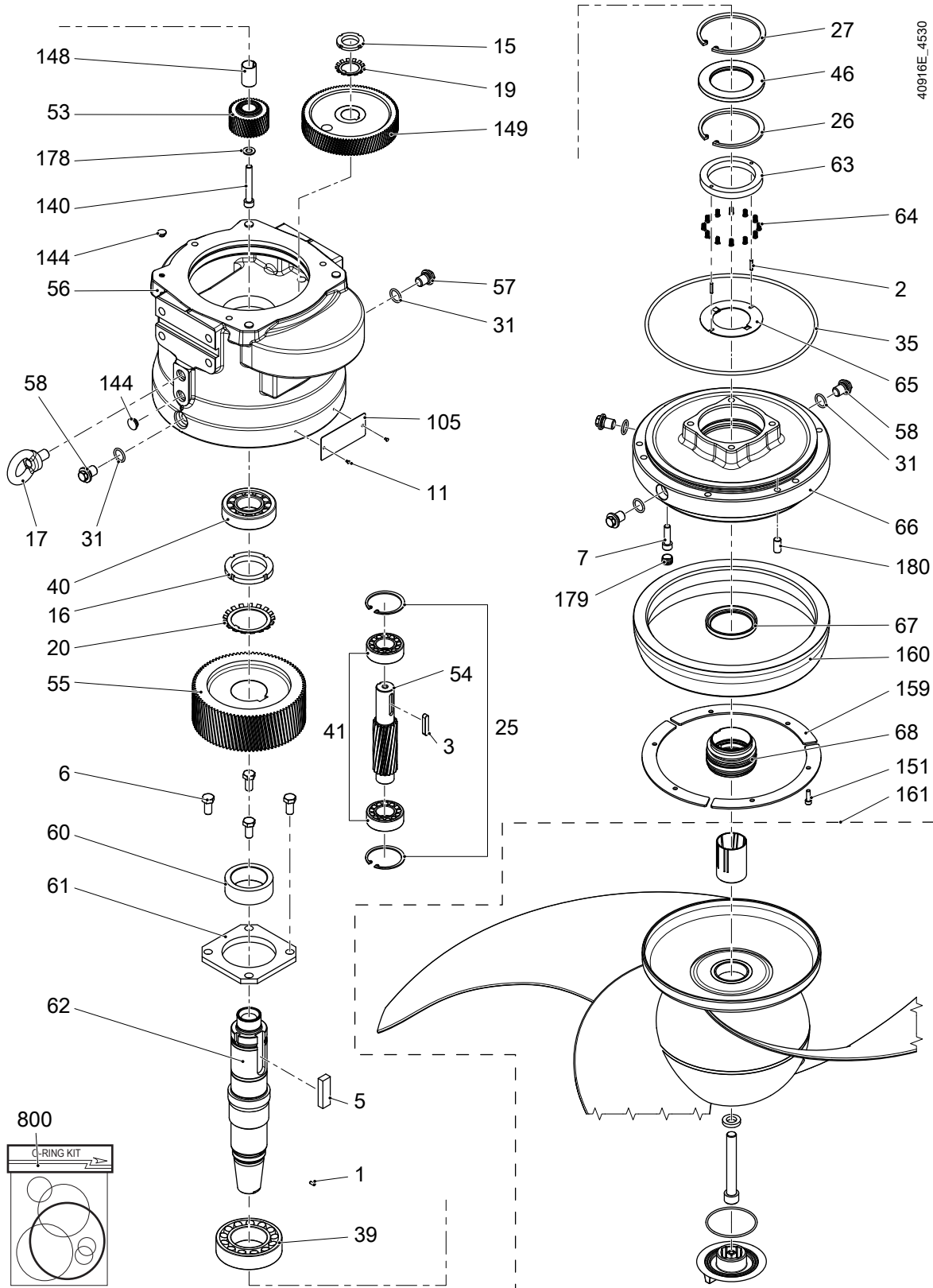
3.1 Drive unit

4530



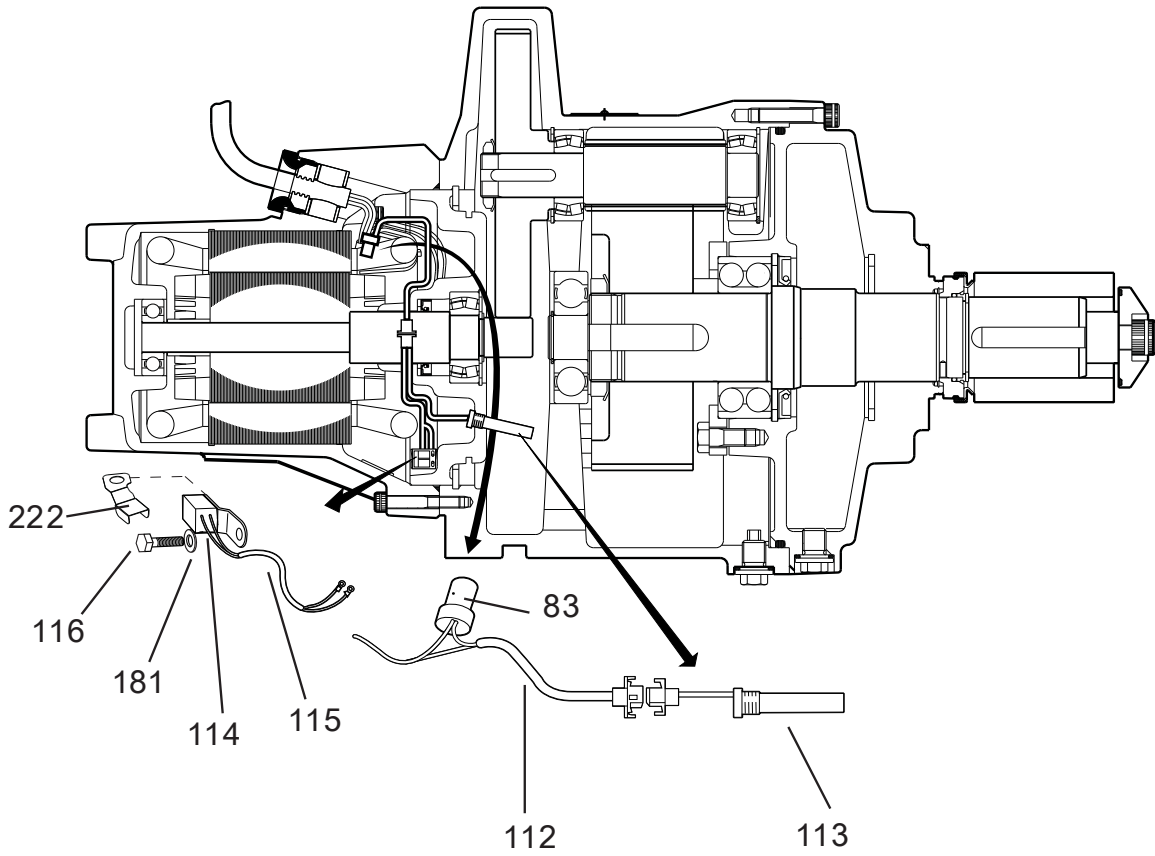
40915D_4530

3.2 Hydraulic unit



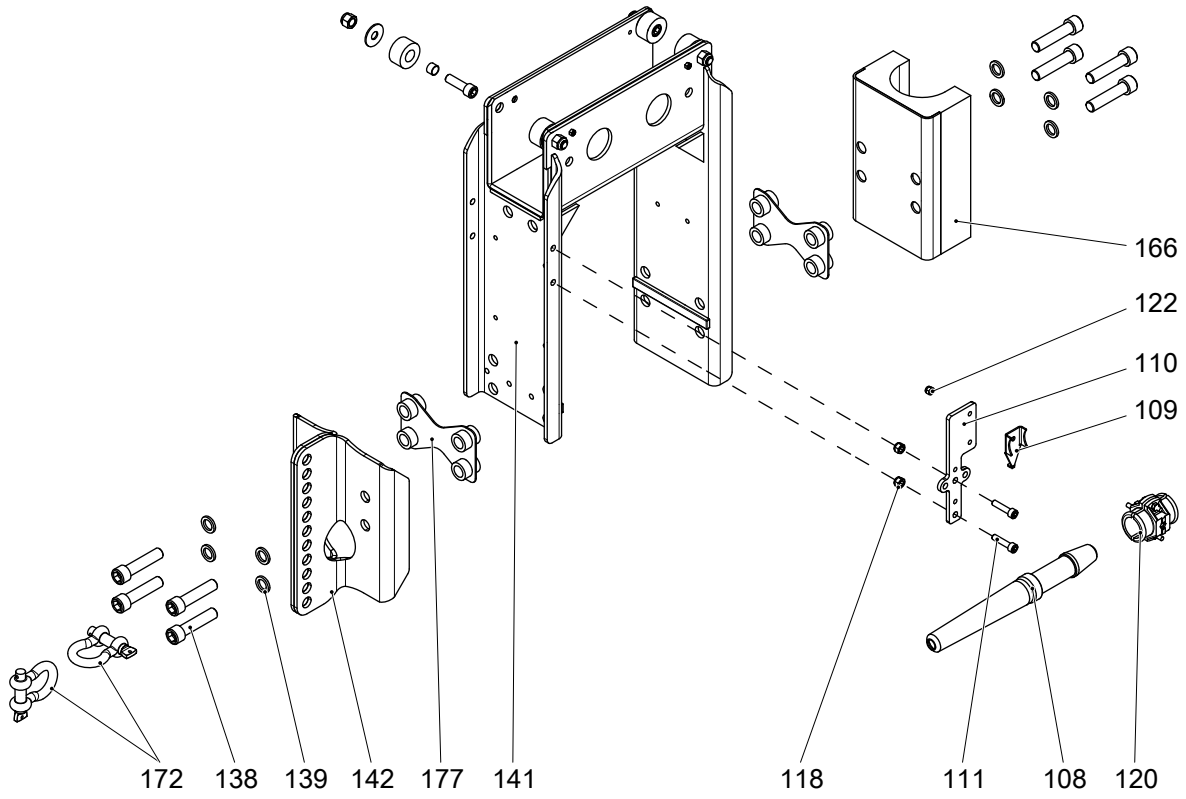
3.3 Installation components

4410 /4430 /4460/4530



40822E

Figure 2: Leakage sensors



40920C_4530

Figure 3: Single guide bar and tripod

4 List of Parts

4.1 4530.010/090

Pos. No	Part. No	Type	Denomination	Qty/Version	
				010	090
1	80 23 05		Parallel pin CP-H8-4X10-1650	1	1
2	80 57 71		Tension pin	2	2
3	80 70 62		Parallel key 8H9X7H11X40	1	1
5	80 46 31		Parallel key 18H9X11H11X56	1	1
6	81 41 54		Hexagon head screw M12X25-A2-70	4	4
7	82 00 53		Hex.socket hd screw M10X35-A2-70	6	6
8	83 03 51		Hex.socket hd screw M12X55-A4-70	3	3
10	82 17 61		Cutting screw TAPTITE-M6X12	1	1
			Power cable x 1 SUBCAB S3x2,5+3x2,5/3+S(4x0,5) 18 - 20mm Max 1000V With cable handling kit		
10	82 20 88		Drive screw 4X5-A2/A4		10
11	82 20 88		Drive screw 4X5-A2/A4	6	
12	83 04 45		Hex.socket hd screw M8X35-A4-80	4	4
15	82 22 31		Round nut M30X1.5	1	1
16	82 22 37		Round nut M60X2	1	1
17	82 31 15		Lifting eye bolt	1	1
19	82 51 31		Lock washer	1	1
20	82 51 37		Lock washer	1	1
25	82 62 12		Retaining ring SGH 62	3	3
26	82 62 30		Retaining ring SGH 105	1	1
27	82 62 32		Retaining ring SGH 110	1	1
31	82 73 90		O-ring 19.2X3 NBR	5	5
33	82 74 79		O-ring 129.5X3 NBR	1	1
35	82 75 00		O-ring 269.3X5.7 NBR	1	1
36	82 74 93		O-ring 199.3X5.7 NBR	1	1
37	82 71 71		O-ring 62X3.0 FPM	1	1
38	83 33 14		Ball bearing 25X62X17	1	1
39	83 35 23		Roller bearing 60X110X28	1	1
40	84 53 76		Roller bearing ECP(40X90X23)	1	1
41	83 35 72		Roller bearing 22206 CC 30X62X20	3	3
45	82 85 69		Seal ring	2	2
46	82 85 52		Seal ring 70X110X8 NITRIL	1	1
48	439 31 04		Stator housing	1	
48	439 31 07	(Ex)	Stator housing		1

Pos. No	Part. No	Type	Denomination	Qty/Version		
				010	090	
49	310 11 01	(Ex)	Stator 18-11-4a	3-phase 60 Hz 4-poles 220V-230V Y// 440V-460V YSER P2=2,60kW/3,50hp 3-phase 60 Hz 4-poles 220V-230V Y// 440V-460V YSER P2=4,60kW/6,20hp	1	1
49	310 11 69	(Ex)	Stator 18-11-4a	3-phase 60 Hz 4-poles 380V D 660V Y P2=2,60kW/3,50hp 3-phase 60 Hz 4-poles 380V D 660V Y P2=4,60kW/6,20hp	1	1
49	310 11 62	(Ex)	Stator 18-11-4a	3-phase 50 Hz 4-poles 220V-230V D 380V-400V Y P2=2,30kW 3-phase 60 Hz 4-poles 260V D 440V-460V Y P2=2,60kW/3,50hp 3-phase 50 Hz 4-poles 220V-230V D 380V-400V Y P2=4,30kW 3-phase 60 Hz 4-poles 260V D 440V-460V Y P2=4,60kW/6,20hp	1	1
49	310 11 67	(Ex)	Stator 18-11-4a	3-phase 50 Hz 4-poles 415V-440V D P2=2,30kW 3-phase 50 Hz 4-poles 415V-440V D P2=4,30kW	1	1
49	310 11 63	(Ex)	Stator 18-11-4a	3-phase 50 Hz 4-poles 500V D P2=2,30kW 3-phase 60 Hz 4-poles 575V-600V D P2=2,60kW/ 3,50hp 3-phase 50 Hz 4-poles 500V D P2=4,30kW 3-phase 60 Hz 4-poles 575V-600V D P2=4,60kW/ 6,20hp	1	1
49	310 11 61	(Ex)	Stator 18-11-4a	3-phase 50 Hz 4-poles 380V-400V D 660V-690V Y P2=2,30kW 3-phase 60 Hz 4-poles 440V-460V D P2=2,60kW/ 3,50hp 3-phase 50 Hz 4-poles 380V-400V D 660V-690V Y P2=4,30kW 3-phase 60 Hz 4-poles 440V-460V D P2=4,60kW/ 6,20hp	1	1
50	757 04 00	(Ex)	Shaft unit		1	1
52	464 54 04		Bearing holder		1	
52	464 54 05		Bearing holder	Water in oil supervision : CLS	1	
52	464 54 07	(Ex)	Bearing holder			1
53	769 77 15		Gear	Reduction ratio: 20,40:1 Frequency: 60 Hz Number of Poles: 4 Propeller Speed: 87 rpm	1	1

Pos. No	Part. No	Type	Denomination	Qty/Version	
				010	090
53	769 77 14		Gear Reduction ratio: 16,77:1 Frequency: 50 Hz Number of Poles: 4 Propeller Speed: 88 rpm Reduction ratio: 16,77:1 Frequency: 60 Hz Number of Poles: 4 Propeller Speed: 106 rpm	1	1
53	769 77 10		Gear Reduction ratio: 11,11:1 Frequency: 50 Hz Number of Poles: 4 Propeller Speed: 130 rpm Only for motor 4.3 kW Reduction ratio: 9,87:1 Frequency: 50 Hz Number of Poles: 4 Propeller Speed: 144 rpm Only for motor 4.3 kW Reduction ratio: 13,52:1 Frequency: 50 Hz Number of Poles: 4 Propeller Speed: 109 rpm Reduction ratio: 13,52:1 Frequency: 60 Hz Number of Poles: 4 Propeller Speed: 130 rpm Only for motor 4.6 kW Reduction ratio: 12,63:1 Frequency: 60 Hz Number of Poles: 4 Propeller Speed: 138 rpm Only for motor 4.6 kW Reduction ratio: 10,46:1 Frequency: 50 Hz Number of Poles: 4 Propeller Speed: 137 rpm Only for motor 4.3 kW Reduction ratio: 14,52:1 Frequency: 60 Hz Number of Poles: 4 Propeller Speed: 121 rpm Only for motor 4.6 kW Reduction ratio: 11,83:1 Frequency: 60 Hz Number of Poles: 4 Propeller Speed: 148 rpm	1	1
53	769 77 11		Gear Reduction ratio: 12,20:1 Frequency: 50 Hz Number of Poles: 4 Propeller Speed: 120 rpm Only for motor 4.3 kW Reduction ratio: 12,20:1 Frequency: 60 Hz Number of Poles: 4 Propeller Speed: 142 rpm Only for motor 4.6 kW	1	1

Pos. No	Part. No	Type	Denomination	Qty/Version	
				010	090
54	464 48 03		Shaft Reduction ratio: 16,77:1 Frequency: 50 Hz Number of Poles: 4 Propeller Speed: 88 rpm Reduction ratio: 16,77:1 Frequency: 60 Hz Number of Poles: 4 Propeller Speed: 106 rpm Reduction ratio: 20,40:1 Frequency: 60 Hz Number of Poles: 4 Propeller Speed: 87 rpm Reduction ratio: 14,52:1 Frequency: 60 Hz Number of Poles: 4 Propeller Speed: 121 rpm Only for motor 4.6 kW	1	1
54	464 48 00		Shaft Reduction ratio: 13,52:1 Frequency: 50 Hz Number of Poles: 4 Propeller Speed: 109 rpm Reduction ratio: 13,52:1 Frequency: 60 Hz Number of Poles: 4 Propeller Speed: 130 rpm Only for motor 4.6 kW	1	1
54	464 48 04		Shaft Reduction ratio: 12,63:1 Frequency: 60 Hz Number of Poles: 4 Propeller Speed: 138 rpm Only for motor 4.6 kW Reduction ratio: 12,20:1 Frequency: 50 Hz Number of Poles: 4 Propeller Speed: 120 rpm Only for motor 4.3 kW Reduction ratio: 12,20:1 Frequency: 60 Hz Number of Poles: 4 Propeller Speed: 142 rpm Only for motor 4.6 kW	1	1
54	464 48 05		Shaft Reduction ratio: 11,83:1 Frequency: 60 Hz Number of Poles: 4 Propeller Speed: 148 rpm	1	1
54	464 48 06		Shaft Reduction ratio: 11,11:1 Frequency: 50 Hz Number of Poles: 4 Propeller Speed: 130 rpm Only for motor 4.3 kW	1	1
54	464 48 02		Shaft Reduction ratio: 10,46:1 Frequency: 50 Hz Number of Poles: 4 Propeller Speed: 137 rpm Only for motor 4.3 kW	1	1
54	464 48 07		Shaft Reduction ratio: 9,87:1 Frequency: 50 Hz Number of Poles: 4 Propeller Speed: 144 rpm Only for motor 4.3 kW	1	1

Pos. No	Part. No	Type	Denomination	Qty/Version	
				010	090
55	464 49 03		Gear Reduction ratio: 16,77:1 Frequency: 50 Hz Number of Poles: 4 Propeller Speed: 88 rpm Reduction ratio: 16,77:1 Frequency: 60 Hz Number of Poles: 4 Propeller Speed: 106 rpm Reduction ratio: 20,40:1 Frequency: 60 Hz Number of Poles: 4 Propeller Speed: 87 rpm Reduction ratio: 14,52:1 Frequency: 60 Hz Number of Poles: 4 Propeller Speed: 121 rpm Only for motor 4.6 kW	1	1
55	464 49 00		Gear Reduction ratio: 13,52:1 Frequency: 50 Hz Number of Poles: 4 Propeller Speed: 109 rpm Reduction ratio: 13,52:1 Frequency: 60 Hz Number of Poles: 4 Propeller Speed: 130 rpm Only for motor 4.6 kW	1	1
55	464 49 04		Gear Reduction ratio: 12,63:1 Frequency: 60 Hz Number of Poles: 4 Propeller Speed: 138 rpm Only for motor 4.6 kW Reduction ratio: 12,20:1 Frequency: 50 Hz Number of Poles: 4 Propeller Speed: 120 rpm Only for motor 4.3 kW Reduction ratio: 12,20:1 Frequency: 60 Hz Number of Poles: 4 Propeller Speed: 142 rpm Only for motor 4.6 kW	1	1
55	464 49 05		Gear Reduction ratio: 11,83:1 Frequency: 60 Hz Number of Poles: 4 Propeller Speed: 148 rpm	1	1
55	464 49 06		Gear Reduction ratio: 11,11:1 Frequency: 50 Hz Number of Poles: 4 Propeller Speed: 130 rpm Only for motor 4.3 kW	1	1
55	464 49 02		Gear Reduction ratio: 10,46:1 Frequency: 50 Hz Number of Poles: 4 Propeller Speed: 137 rpm Only for motor 4.3 kW	1	1
55	464 49 07		Gear Reduction ratio: 9,87:1 Frequency: 50 Hz Number of Poles: 4 Propeller Speed: 144 rpm Only for motor 4.3 kW	1	1
56	464 51 06	(Ex)	Gear housing	1	1
57	416 94 00		Inspection screw	1	1
58	428 22 17		Inspection screw BRASS	4	4
60	464 61 02		Ring	1	1

Pos. No	Part. No	Type	Denomination	Qty/Version	
				010	090
61	775 80 01		Supporting washer	1	1
62	757 01 00		Shaft	1	1
63	493 97 00		Ring	1	1
64	456 71 00		Compression spring	12	12
65	464 59 00		Washer 63X104X1.5	1	1
66	756 99 00		Seal housing	1	1
67	382 83 00		Wear protection NBR-A2	1	1
68	384 03 10		Mechanical seal WCCR/WCCR FPM	1	
68	384 03 10		Mechanical seal WCCR/WCCR FPM		1
80	83 42 65		Terminal block 600V/20A UL Power cable x 1 SUBCAB 4G2,5+2x1,5	2	2
80	83 42 67		Terminal block 600V/20A UL Power cable x 1 SUBCAB 4G2,5+2x1,5 17 - 18mm L= 10m Max 750V With cable handling kit Power cable x 1 SUBCAB 4G2,5+2x1,5 17 - 18mm L= 20m Max 750V With cable handling kit Power cable x 1 SUBCAB 4G2,5+2x1,5 17 - 18mm L= 16m Max 750V With cable handling kit	3	3
80	83 42 65		Terminal block 600V/20A UL Power cable x 1 SUBCAB 7G2,5+2x1,5	8	8
80	83 42 65		Terminal block 600V/20A UL Power cable x 1 SUBCAB S3x2,5+3x2,5/3+S(4x0,5)	4	4
80	85 08 73		Terminal block Power cable x 1 SUBCAB S3x2,5+3x2,5/3+S(4x0,5) 18 - 20mm L= 20m Max 1000V With cable handling kit Power cable x 1 SUBCAB 4G4+2x1,5 20 - 22mm L= 16m Max 750V With cable handling kit Power cable x 1 SUBCAB S3x2,5+3x2,5/3+S(4x0,5) 18 - 20mm L= 10m Max 1000V With cable handling kit	3	3
81	83 45 59		Cable tie 200X2.4 PA 6/6 -55+105	2	2

Pos. No	Part. No	Type	Denomination	Qty/Version		
				010	090	
82	83 43 58		Cable lug UL/CSA 1.04-2.62 MM2 M6	Power cable x 1 SUBCAB 4G2,5+2x1,5 17 - 18mm L= 10m Max 750V With cable handling kit Power cable x 1 SUBCAB 7G2,5+2x1,5 20 - 23mm L= 10m Max 750V Star delta possible With cable handling kit Power cable x 1 SUBCAB 4G2,5+2x1,5 17 - 18mm L= 20m Max 750V With cable handling kit Power cable x 1 SUBCAB 7G2,5+2x1,5 20 - 23mm L= 20m Max 750V Star delta possible With cable handling kit Power cable x 1 SUBCAB 4G2,5+2x1,5 17 - 18mm L= 16m Max 750V With cable handling kit	1	1
82	83 42 62		Closed-end splice 0.33-0.82 (AWG 22-18)	Power cable x 1 SUBCAB S3x2,5+3x2,5/3+S(4x0,5)	4	4
82	83 43 62		Cable lug UL/CSA 0.50-1.65 MM2 M6	Power cable x 1 SUBCAB S3x2,5+3x2,5/3+S(4x0,5)	1	1
82	85 10 24		Cable lug	Power cable x 1 SUBCAB S3x2,5+3x2,5/3+S(4x0,5) 18 - 20mm L= 20m Max 1000V With cable handling kit Power cable x 1 SUBCAB 4G4+2x1,5 20 - 22mm L= 16m Max 750V With cable handling kit Power cable x 1 SUBCAB S3x2,5+3x2,5/3+S(4x0,5) 18 - 20mm L= 10m Max 1000V With cable handling kit	1	1
83	83 44 24		Closed-end splice 3-6 (AWG 12-10)	Leakage detector in the stator house :FLS	3	3
83	83 44 24		Closed-end splice 3-6 (AWG 12-10)		1	
84	83 44 23		Closed-end splice 4.0-9.0 (AWG 8)	Stator 3-phase 60 Hz 4-poles 220V-230V Y// 440V-460V YSER P2=2,60kW/3,50hp Stator 3-phase 60 Hz 4-poles 220V-230V Y// 440V-460V YSER P2=4,60kW/6,20hp	1	1
84	83 44 24		Closed-end splice 3-6 (AWG 12-10)	Power cable x 1 SUBCAB 4G2,5+2x1,5 Power cable x 1 SUBCAB 7G2,5+2x1,5	2	2
92	734 59 00		El.lead through unit 12X + 6X		1	1
94	443 50 00		Entrance cover	Cable entry: (17) - 20mm Seal sleeve mtrl: NBR	1	
94	443 51 00		Entrance cover	Cable entry: (20) - 23mm Cable entry: (17) - 18mm Threaded cable entry	1	

Pos. No	Part. No	Type	Denomination	Qty/Version		
				010	090	
94	443 50 03	(Ex)	Entrance cover	Cable entry: (20) - 23mm Cable entry: (17) - 20mm		1
95	642 17 00		Entrance flange (20)-32 MM	Cable entry: (17) - 20mm Seal sleeve mtrl: NBR Cable entry: (20) - 23mm	1	
95	397 81 00	(Ex)	Gland screw Pr 37	Cable entry: (17) - 18mm Threaded cable entry	1	
95	642 17 01	(Ex)	Entrance flange (14)-32 MM	Cable entry: (20) - 23mm Cable entry: (17) - 20mm		1
96	82 40 81		Plain washer 32.5X52X2-A2-70	Cable entry: (17) - 20mm Seal sleeve mtrl: NBR	4	4
96	82 40 82		Plain washer 34.5X52X2-A2-70	Cable entry: (20) - 23mm	4	4
96	82 42 42		Plain washer 24.5X35X2-A4-70	Cable entry: (17) - 18mm Threaded cable entry	1	
97	84 18 01		Seal sleeve (17)-20 MM NBR	Cable entry: (17) - 20mm Seal sleeve mtrl: NBR	2	2
97	84 18 02		Seal sleeve (20)-23 MM NBR	Cable entry: (20) - 23mm	2	2
97	84 17 93		Seal sleeve (16)-18 MM NBR	Cable entry: (17) - 18mm Threaded cable entry	1	
100	83 03 48		Hex.socket hd screw M12X40-A4-70	Cable entry: (17) - 20mm Seal sleeve mtrl: NBR Cable entry: (20) - 23mm	2	2
101	678 58 18	(Ex)	Cable clip 16-(18) MM	Cable entry: (17) - 18mm Threaded cable entry	1	
102	94 20 59		Motor cable subcab 4G2.5+2X1.5		*	*
102	94 20 82		Motor cable subcab 7G2.5+2X1.5		*	*
102	94 19 90		Motor cable subcab S3X2.5+3X2.5/3+S(4X0.5)		*	*
102	94 20 60		Motor cable subcab 4G4+2X1.5		*	*
103	83 45 59		Cable tie 200X2.4 PA 6/6 -55+105		1	1
105	630 68 00	(Ex)	Data plate USE 6306801 AS SPARE PART		2	3
105	775 03 00		Connection plate		1	1
105	630 69 01	(Ex)	Certificate plate IECEX			2
105	630 69 00	(Ex)	Certificate plate EN			2
105	630 70 00	(Ex)	Certificate plate FM			2
106	83 02 58		Hex.socket hd screw M5X12-A4-70			2
107	279 29 00	(Ex)	Earthing plate			1

Pos. No	Part. No	Type	Denomination	Qty/Version	
				010	090
108	838 12 00		Bending protection Power cable x 1 SUBCAB 4G2,5+2x1,5 17 - 18mm L= 10m Max 750V With cable handling kit Power cable x 1 SUBCAB 4G2,5+2x1,5 17 - 18mm L= 20m Max 750V With cable handling kit Power cable x 1 SUBCAB 4G2,5+2x1,5 17 - 18mm L= 16m Max 750V With cable handling kit	1	1
108	838 12 02		Bending protection Power cable x 1 SUBCAB 7G2,5+2x1,5 20 - 23mm L= 10m Max 750V Star delta possible With cable handling kit Power cable x 1 SUBCAB 7G2,5+2x1,5 20 - 23mm L= 20m Max 750V Star delta possible With cable handling kit Power cable x 1 SUBCAB 4G4+2x1,5 20 - 22mm L= 16m Max 750V With cable handling kit	1	1
108	838 12 01		Bending protection Power cable x 1 SUBCAB S3x2,5+3x2,5/3+S(4x0,5) 18 - 20mm L= 20m Max 1000V With cable handling kit Power cable x 1 SUBCAB S3x2,5+3x2,5/3+S(4x0,5) 18 - 20mm L= 10m Max 1000V With cable handling kit	1	1
109	846 46 00		Bracket	1	1
110	846 65 00		Bracket	1	1
111	83 04 45		Hex.socket hd screw M8X35- A4-80	2	2
112	504 78 05		Cable unit Water in oil supervision : CLS	1	
113	505 12 00		Leakage sensor (CLS30) Water in oil supervision : CLS	1	
114	671 31 00		Leakage sensor Leakage detector in the stator house :FLS	1	1
115	504 78 09		Cable unit (FLS) Leakage detector in the stator house :FLS	1	1
116	81 41 52		Hexagon head screw M12X20- A2-70	1	1
116	81 41 52		Hexagon head screw M12X20- A2-70 Leakage detector in the stator house :FLS Water in oil supervision : CLS	2	
118	82 27 27		Lock nut M8-A4-70	2	2
120	85 09 83		Cable holder	1	1
122	82 27 26		Lock nut M6-A4-70	1	1
138	83 03 76		Hex.socket hd screw M16X70- A4-70	8	8
139	82 50 19		Lock washer M16	8	8
140	82 00 60		Hex.socket hd screw M10X70- A2-70	1	1

Pos. No	Part. No	Type	Denomination	Qty/Version	
				010	090
141	481 95 12		Stand unit Guide bar dimension: 100 x 150mm	1	1
141	481 95 09		Stand unit Guide bar dimension: 100 x 100mm	1	
141	481 95 10		Stand unit Guide bar dimension: 100 x 100mm		1
142	842 76 00		Lifting handle	1	1
144	82 69 41		Protective plug F11	1	1
144	82 70 92		Protective plug	6	6
148	779 90 00		Sleeve unit	1	1
149	690 86 25		Gear Reduction ratio: 20,40:1 Frequency: 60 Hz Number of Poles: 4 Propeller Speed: 87 rpm	1	1
149	690 86 24		Gear Reduction ratio: 16,77:1 Frequency: 50 Hz Number of Poles: 4 Propeller Speed: 88 rpm Reduction ratio: 16,77:1 Frequency: 60 Hz Number of Poles: 4 Propeller Speed: 106 rpm	1	1
149	690 86 20		Gear Reduction ratio: 11,11:1 Frequency: 50 Hz Number of Poles: 4 Propeller Speed: 130 rpm Only for motor 4.3 kW Reduction ratio: 9,87:1 Frequency: 50 Hz Number of Poles: 4 Propeller Speed: 144 rpm Only for motor 4.3 kW Reduction ratio: 13,52:1 Frequency: 50 Hz Number of Poles: 4 Propeller Speed: 109 rpm Reduction ratio: 13,52:1 Frequency: 60 Hz Number of Poles: 4 Propeller Speed: 130 rpm Only for motor 4.6 kW Reduction ratio: 12,63:1 Frequency: 60 Hz Number of Poles: 4 Propeller Speed: 138 rpm Only for motor 4.6 kW Reduction ratio: 10,46:1 Frequency: 50 Hz Number of Poles: 4 Propeller Speed: 137 rpm Only for motor 4.3 kW Reduction ratio: 14,52:1 Frequency: 60 Hz Number of Poles: 4 Propeller Speed: 121 rpm Only for motor 4.6 kW Reduction ratio: 11,83:1 Frequency: 60 Hz Number of Poles: 4 Propeller Speed: 148 rpm	1	1

Pos. No	Part. No	Type	Denomination	Qty/Version		
				010	090	
149	690 86 21		Gear	Reduction ratio: 12,20:1 Frequency: 50 Hz Number of Poles: 4 Propeller Speed: 120 rpm Only for motor 4.3 kW Reduction ratio: 12,20:1 Frequency: 60 Hz Number of Poles: 4 Propeller Speed: 142 rpm Only for motor 4.6 kW	1	1
151	82 00 15		Hex.socket hd screw M6X20-A2-70		6	6
159	744 64 00		Bracket		3	3
160	744 65 00		Protective ring		1	1
161	811 02 00		Propeller unit		1	1
166	482 04 02		Support		1	1
172	82 26 49		Shackle		2	2
177	851 77 00	(Ex)	Distance block		2	2
178	82 35 76		Plain washer 10.5X20X2-A4-170HV		1	1
179	82 69 50		Protective plug M20		6	6
180	84 69 54		Set screw		3	3
181	82 50 17		Lock washer M12	Leakage detector in the stator house :FLS Water in oil supervision : CLS Leakage detector in the stator house :FLS Water in oil supervision : CLS	1	1
222	679 03 00		Holder	Water in oil supervision : CLS	2	
223	82 74 63		O-ring 49.5X3 NBR	Cable entry: (17) - 20mm Seal sleeve mtrl: NBR Cable entry: (20) - 23mm	1	1
224	597 98 02	(Ex)	Sleeve	Cable entry: (17) - 20mm Seal sleeve mtrl: NBR Cable entry: (20) - 23mm	1	1
250	726 11 00		Fastening kit		1	1
400	667 40 00		Sticker		2	2
800	85 10 73		O-ring kits		1	1
801	466 26 14		Zinc anode kit		1	1
813	823 26 04		Handling kit	Power cable x 1 SUBCAB 7G2,5+2x1,5 20 - 22mm L= 10m Max 750V Star delta possible With cable handling kit Power cable x 1 SUBCAB S3x2,5+3x2,5/3+S(4x0,5) 18 - 20mm L= 10m Max 1000V With cable handling kit Power cable x 1 SUBCAB 4G2,5+2x1,5 17 - 18mm L= 10m Max 750V With cable handling kit	1	1

Pos. No	Part. No	Type	Denomination	Qty/Version	
				010	090
813	823 26 05		Handling kit Power cable x 1 SUBCAB 4G2,5+2x1,5 17 - 18mm L= 20m Max 750V With cable handling kit Power cable x 1 SUBCAB 4G2,5+2x1,5 17 - 18mm L= 16m Max 750V With cable handling kit Power cable x 1 SUBCAB 4G4+2x1,5 20 - 22mm L= 16m Max 750V With cable handling kit	1	1
813	823 26 06		Handling kit Power cable x 1 SUBCAB S3x2,5+3x2,5/3+S(4x0,5) 18 - 20mm L= 20m Max 1000V With cable handling kit Power cable x 1 SUBCAB 7G2,5+2x1,5 20 - 23mm L= 20m Max 750V Star delta possible With cable handling kit	1	1
900	819 05 00		Basic repair kit	1	1
901	90 17 52		Oil ISO VG 32	1.5L	1.5L
901	90 17 58		Oil GEAR UNITS	5L	5L
912	82 73 90		O-ring 19.2X3 NBR	5	5
915	777 52 00		Mounting kit	1	1

Xylem |'zīləm|

- 1) The tissue in plants that brings water upward from the roots;
- 2) a leading global water technology company.

We're a global team unified in a common purpose: creating advanced technology solutions to the world's water challenges. Developing new technologies that will improve the way water is used, conserved, and re-used in the future is central to our work. Our products and services move, treat, analyze, monitor and return water to the environment, in public utility, industrial, residential and commercial building services settings. Xylem also provides a leading portfolio of smart metering, network technologies and advanced analytics solutions for water, electric and gas utilities. In more than 150 countries, we have strong, long-standing relationships with customers who know us for our powerful combination of leading product brands and applications expertise with a strong focus on developing comprehensive, sustainable solutions.

For more information on how Xylem can help you, go to www.xylem.com



Xylem Water Solutions Global
Services AB 556782-9253
361 80 Emmaboda
Sweden
Tel: +46-471-24 70 00
Fax: +46-471-24 74 01
<http://tpi.xylem.com>
[www.xylemwatersolutions.com/
contacts/](http://www.xylemwatersolutions.com/contacts/)

Visit our Web site for the latest version of this document and more information

The original instruction is in English. All non-English instructions are translations of the original instruction.

© 2012 Xylem Inc